

1960 Corvette Outer door button adjustment

Dave Zuberer

On our 1960 Corvette, the passenger door was difficult to open from the outside with the push button latch. The door opened quite easily using the inside pull.

The adjustment that corrected the problem is shown in the attached photos. The door button rod pushes on a “pad” that activates the Door handle push button rod with an adjustable pivot. Adjusting that pivot corrected the “hanging” of the latch when opening from the outside.

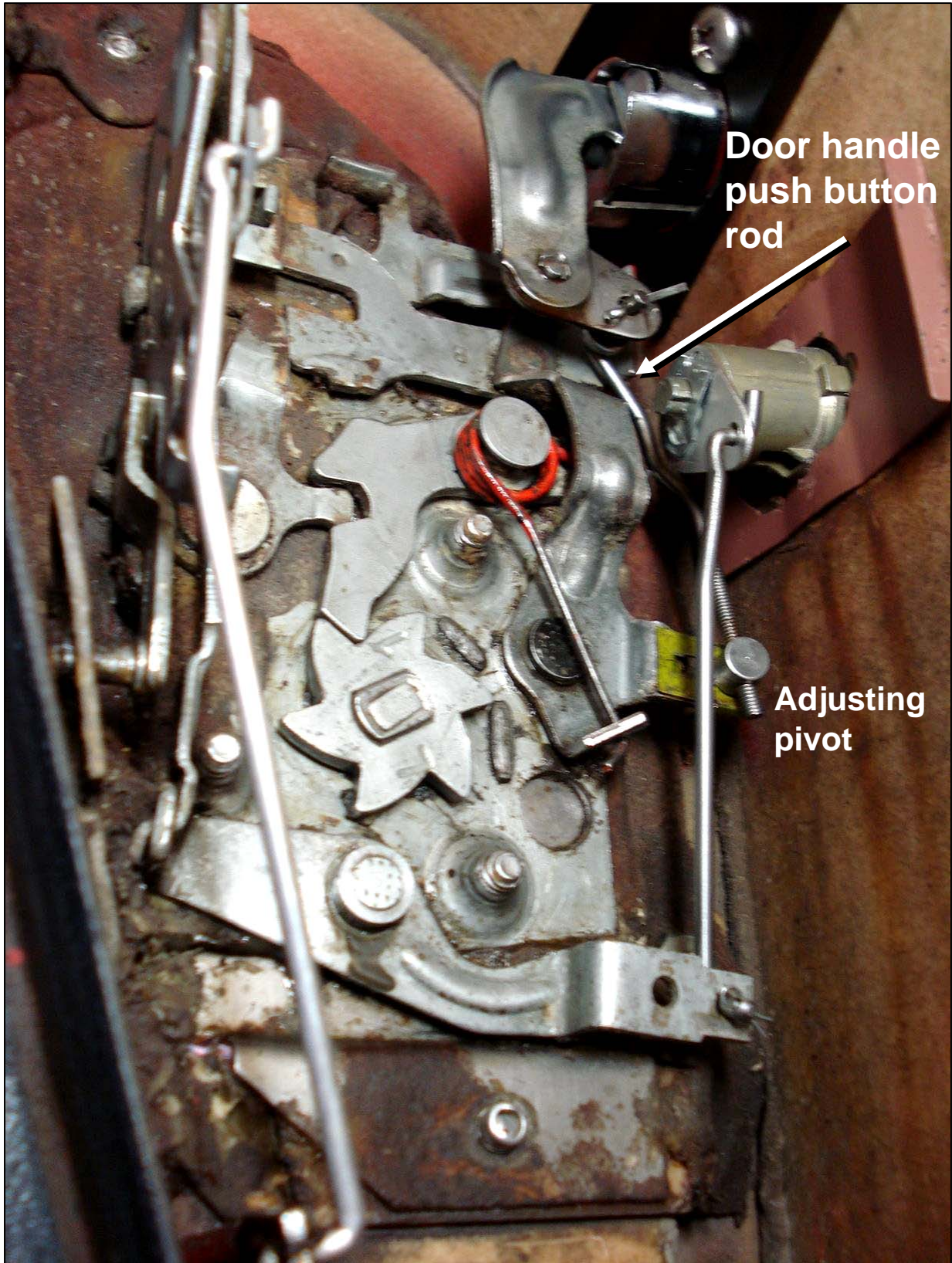
Shown here are parts from our car and from the Paragon and Keen on-line parts catalogs.



Paragon Number: 11281
GM Part Number: 3725145



DOOR HANDLE LEVER ROD SPRING KIT
Paragon Number: 11259K



Driver-side latch mechanism

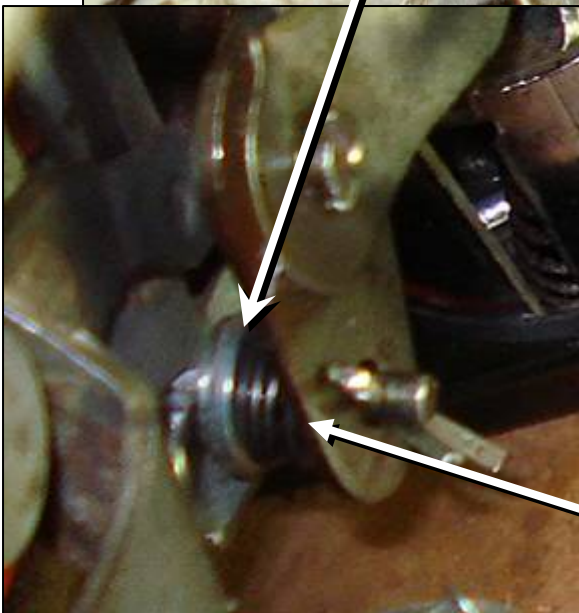


**Door
Lock Rod
Clip**



**Threaded pivot
adjustment**

Spring and washer

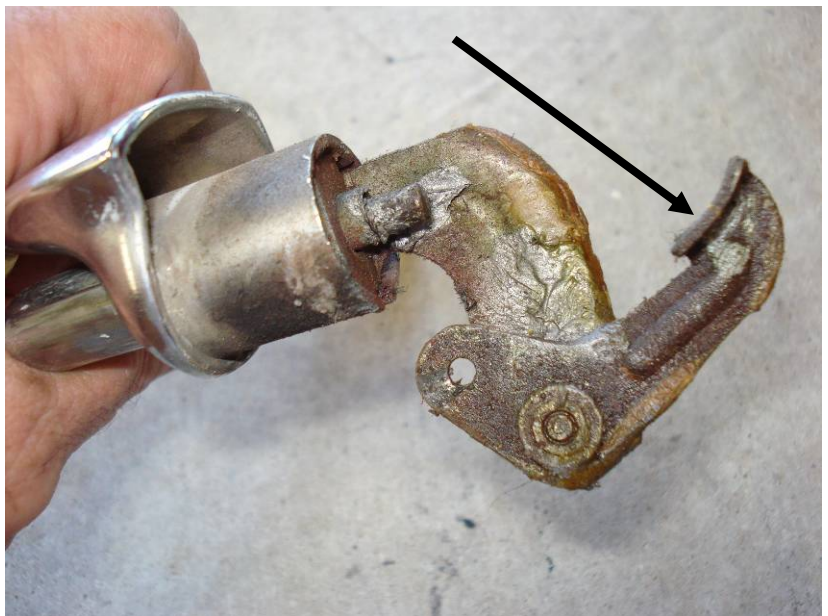
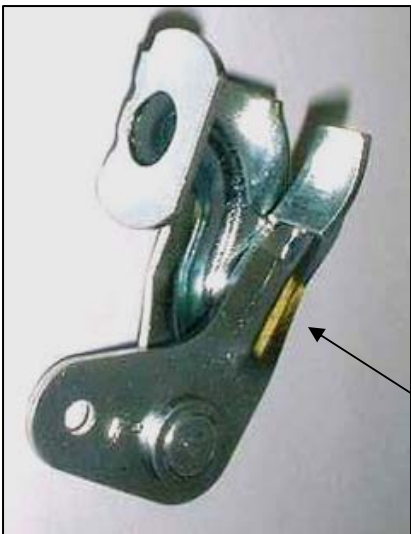


This rod pushes on the pad that actuates the Door handle push button rod

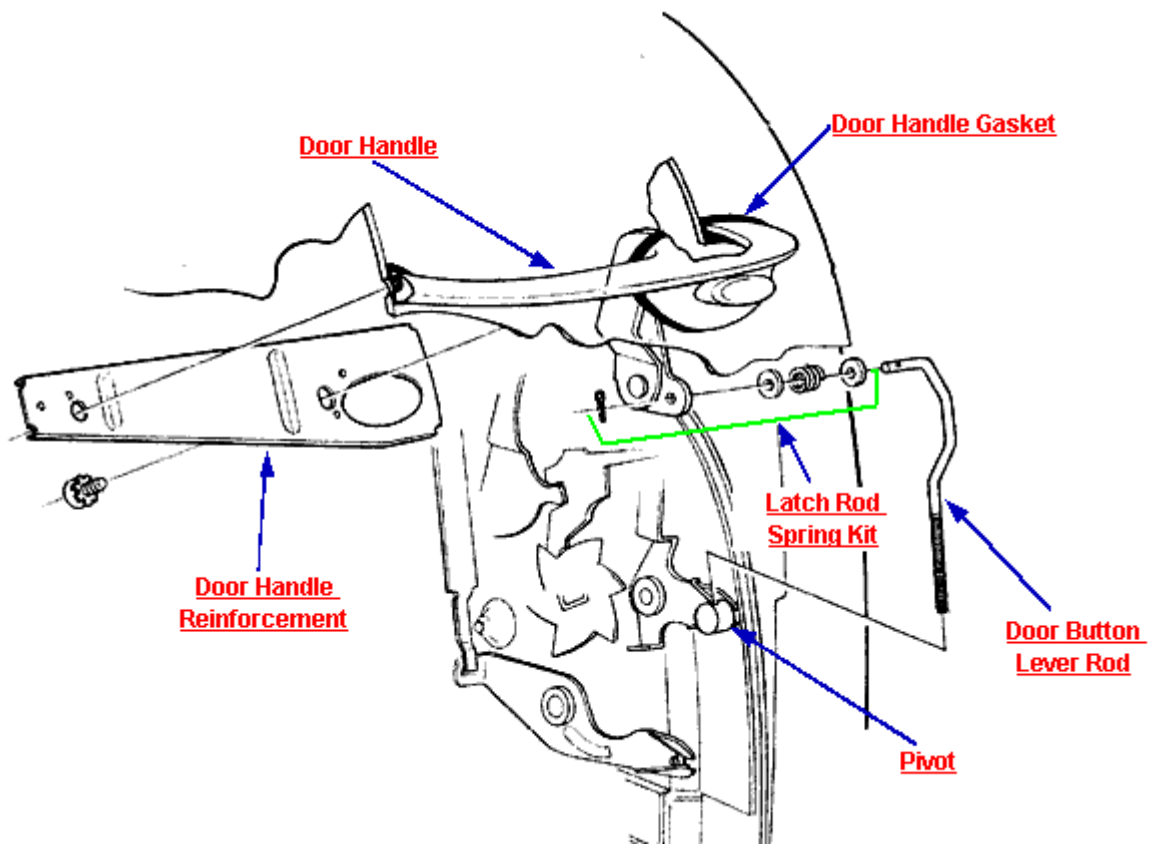


OUTSIDE DOOR HANDLE
Paragon Number: 6681K

Button rod pushes against this pad to actuate the door handle push button rod.



Keen Parts:
Part Number:130200



(800) 757-KEEN

©2004 Keen Parts Inc. All Rights Reserved