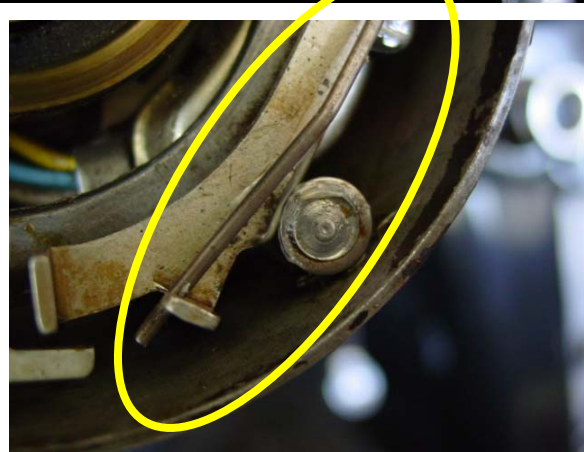
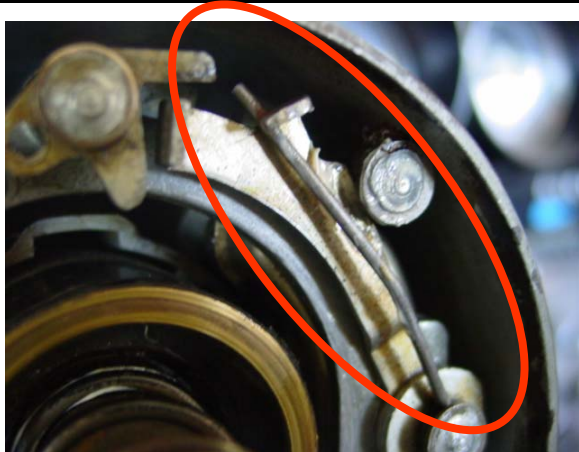
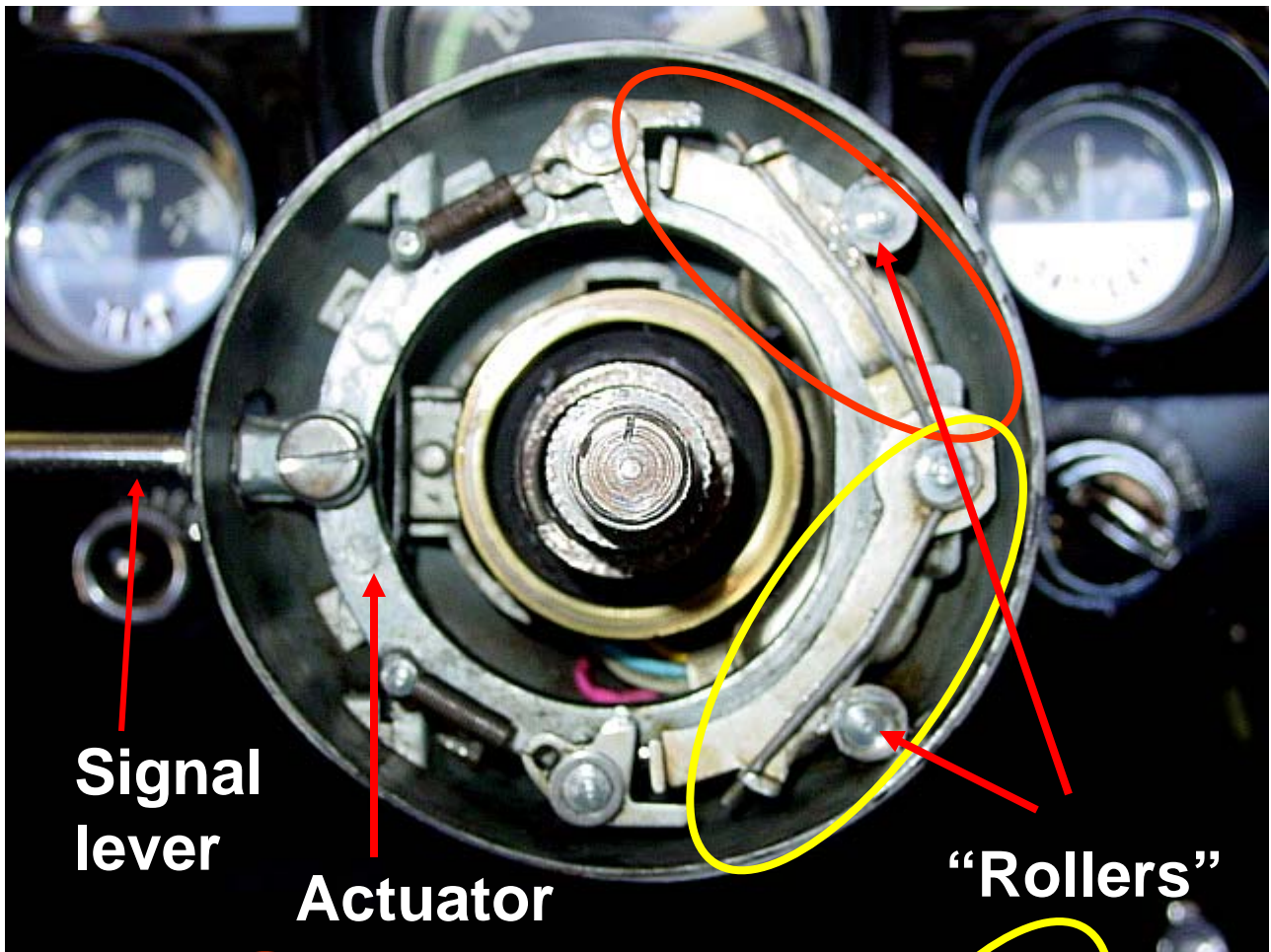


Turn signal mechanism: 1960 Corvette

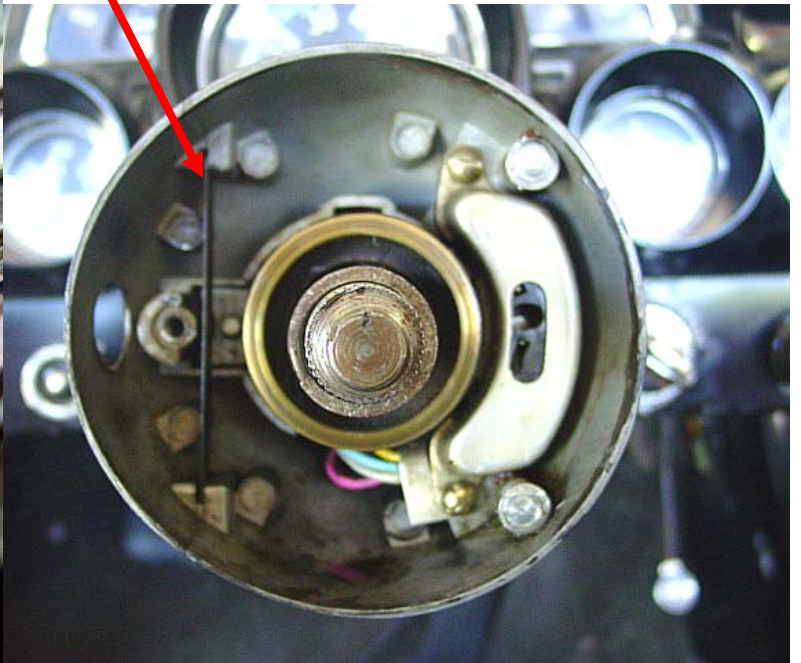
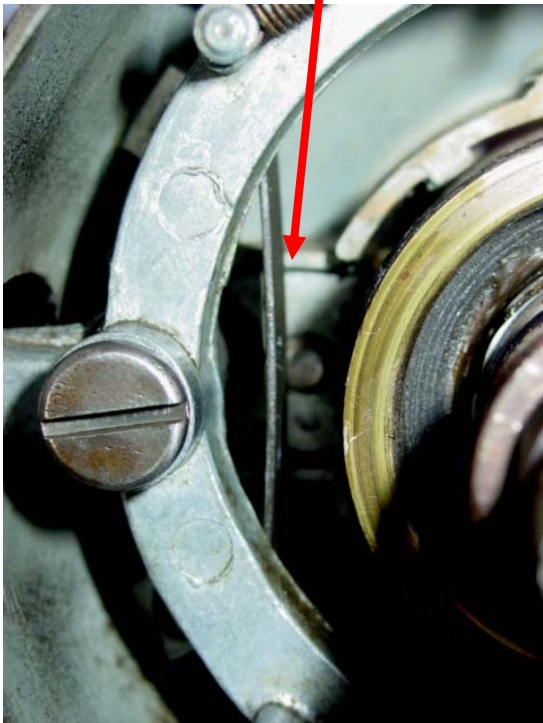
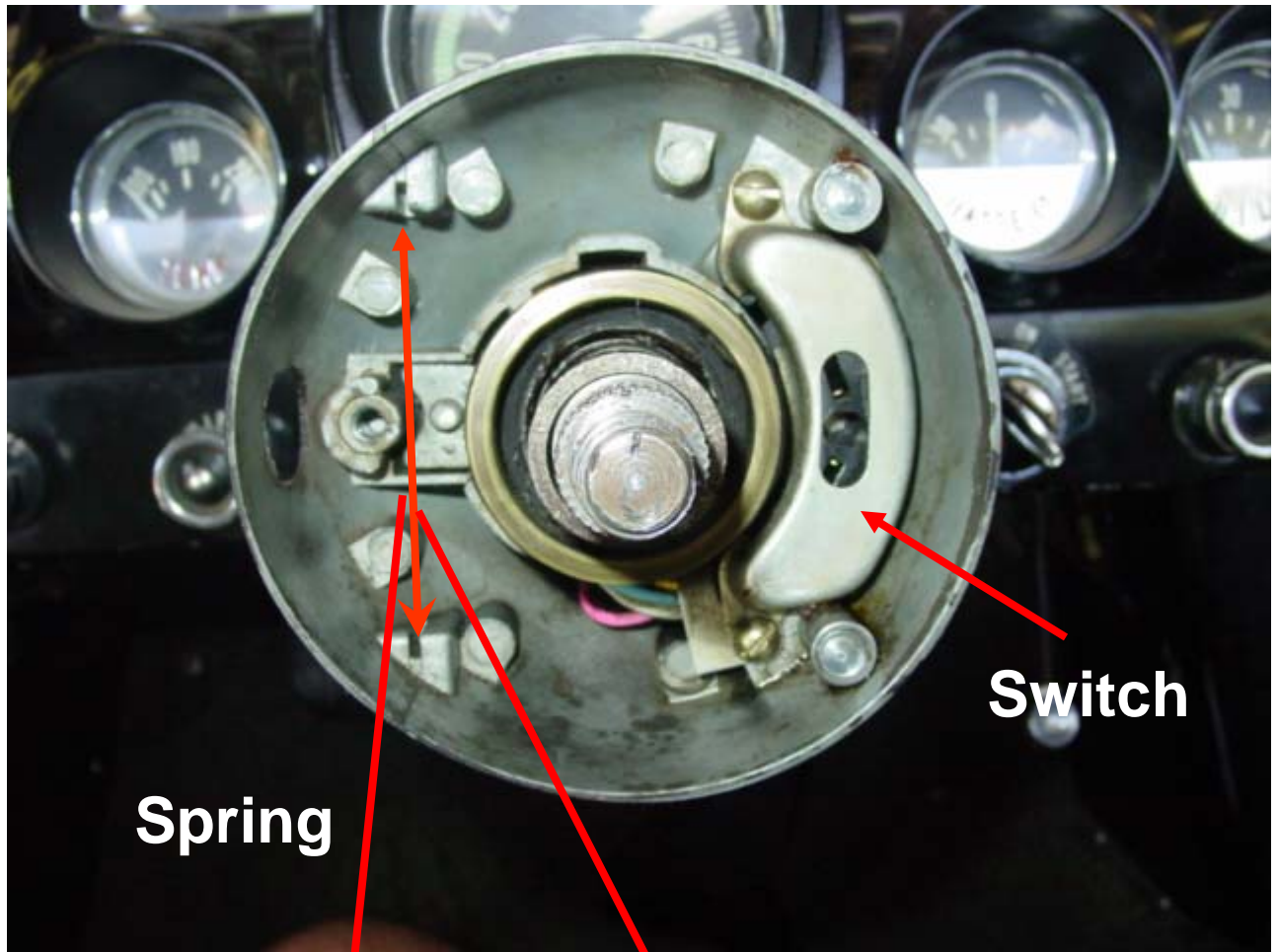
D. Zuberer



These are pics of the turn signal mechanism in my 1960. I cannot vouch for their originality; these are shown as I found them.

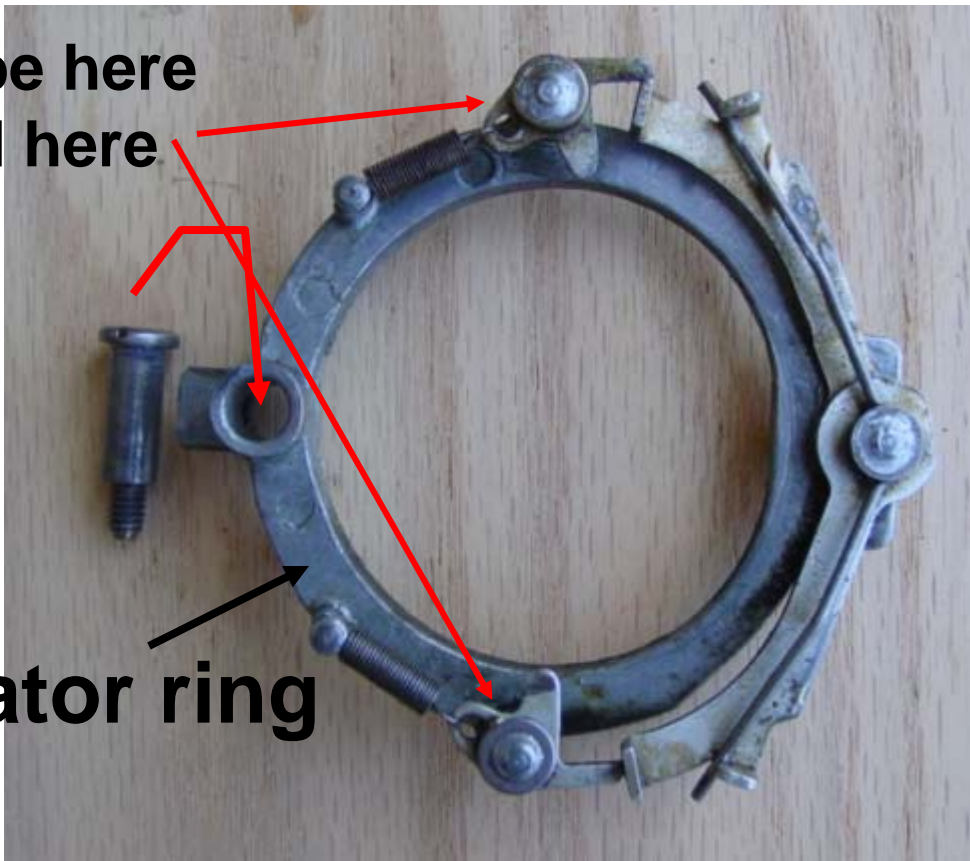


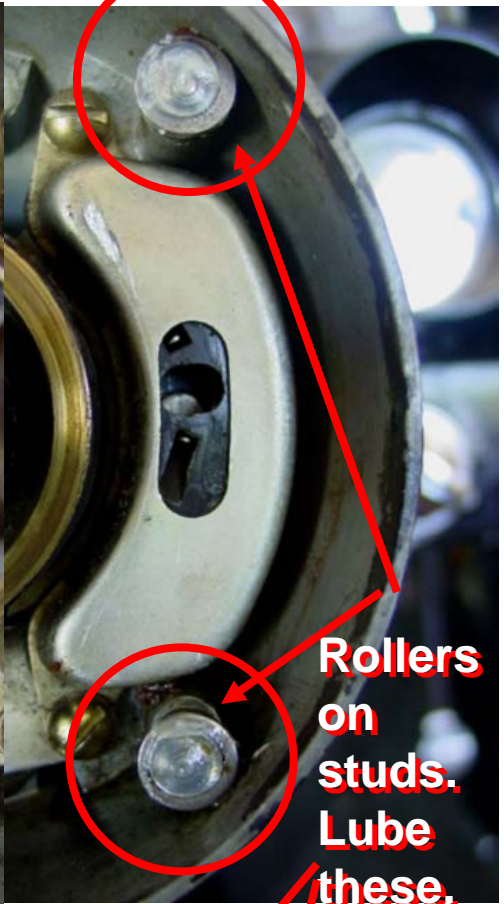
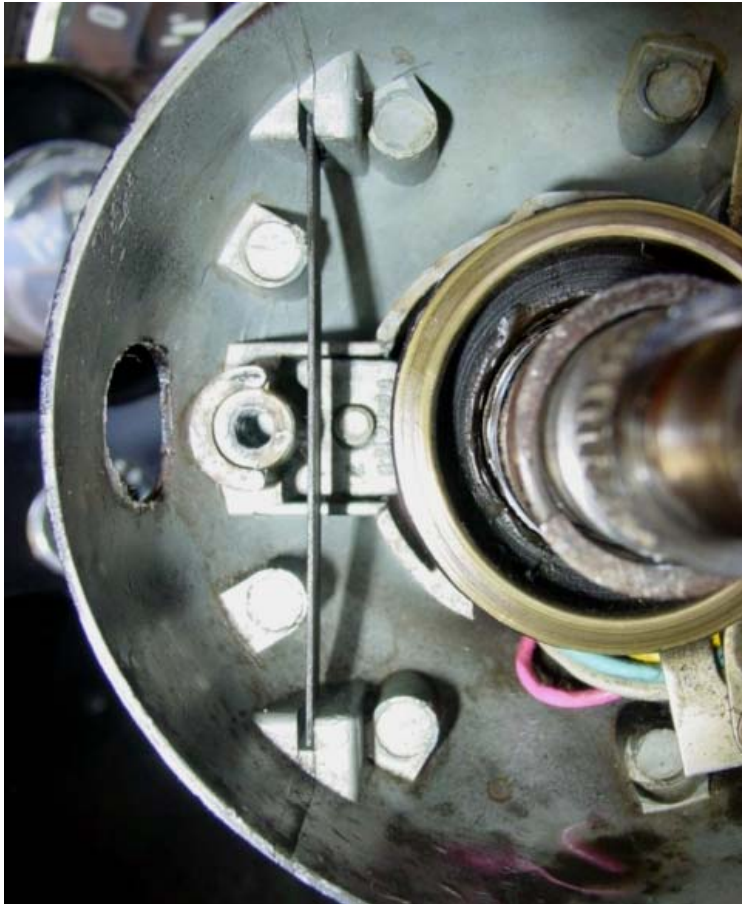
Turn signal mechanism rocks back and forth on the rollers shown above.



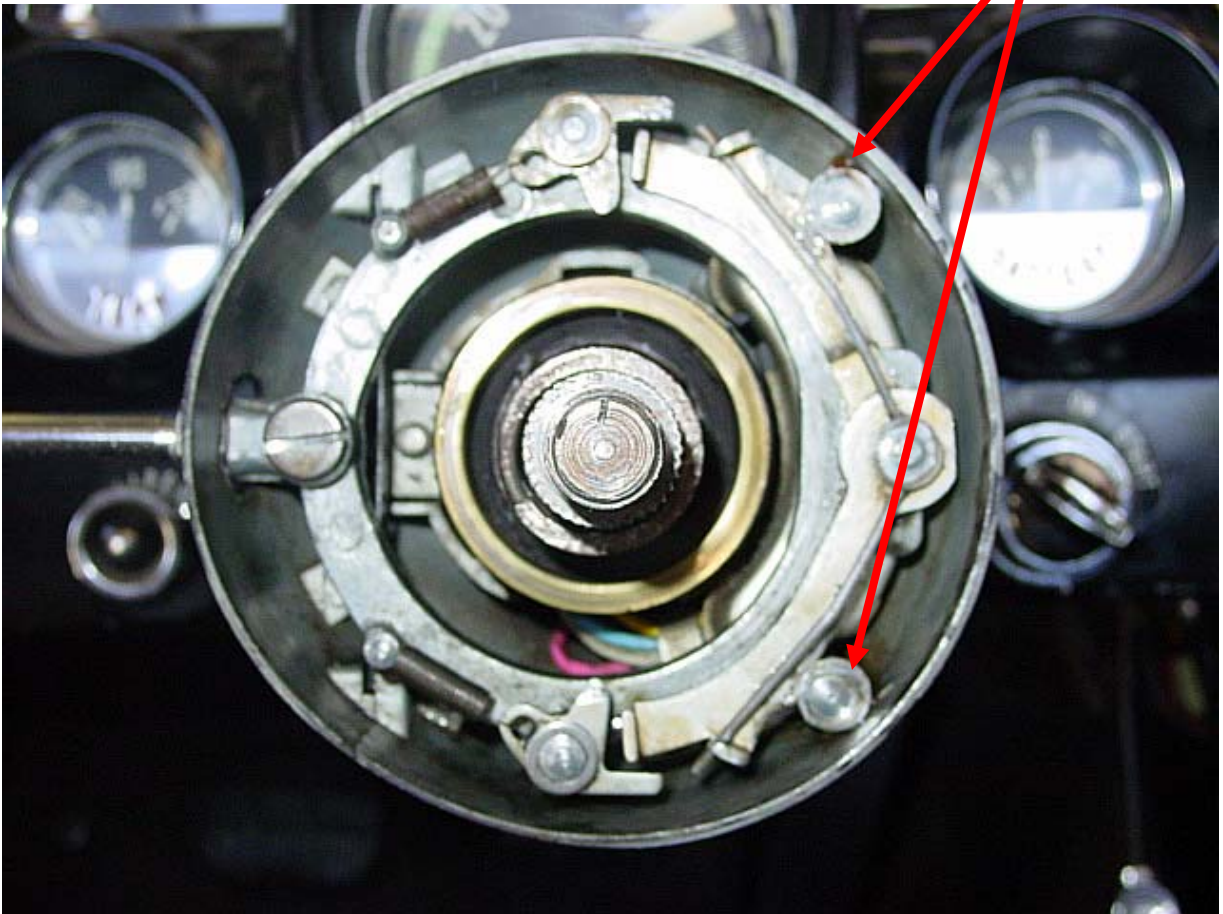
**Lube here
and here**

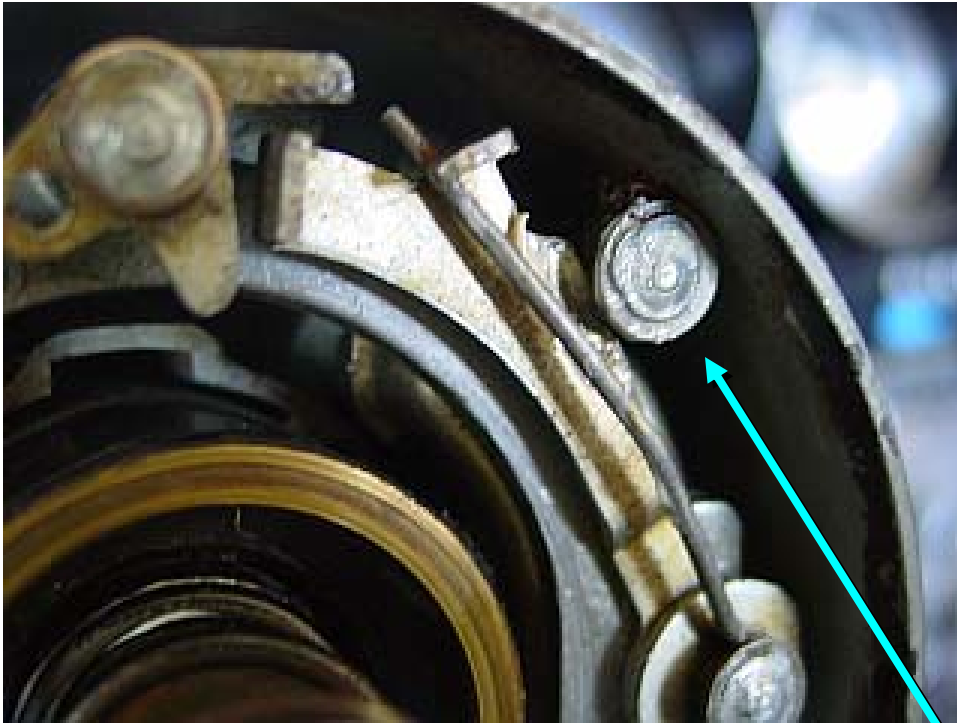
Actuator ring





**Rollers
on
studs.
Lube
these.**





Close-up of rollers shown in previous photo. These were a bit gunked up on the car when I got it. A little PB Blaster or Kroil and they roll very well.

