

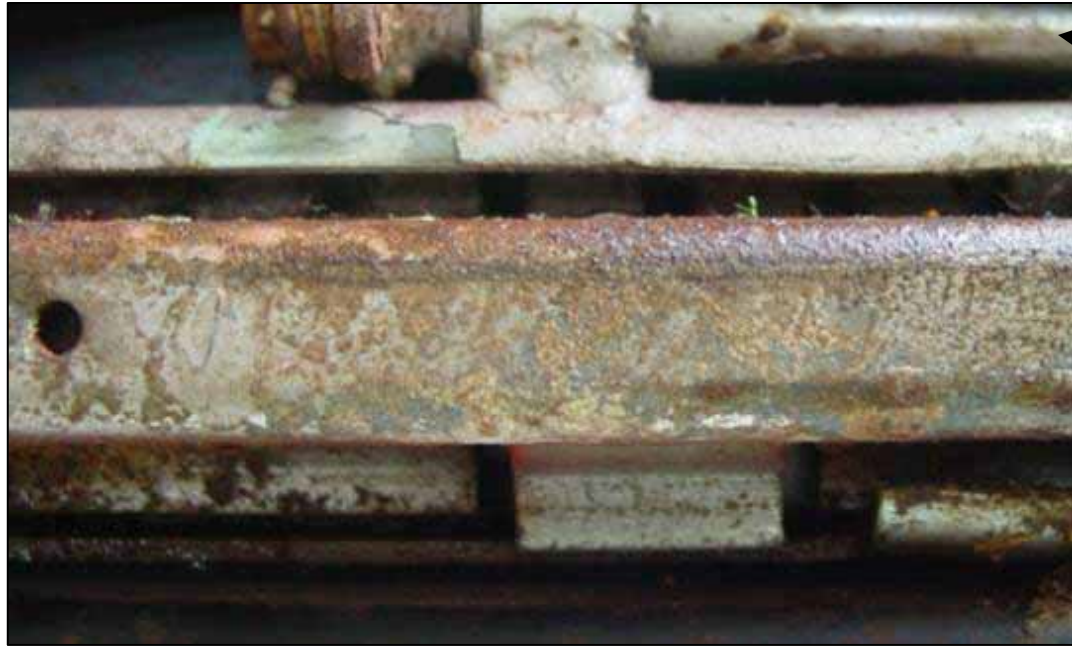
1960 Corvette Seat track “refurb”



Dave Zuberer



**Seat tracks as found in the 1960
Lot's of rust!**



Adjuster release rod

As you can see, there was lots of rust and corrosion to clean up.



Underside of seat track with the adjuster release rod



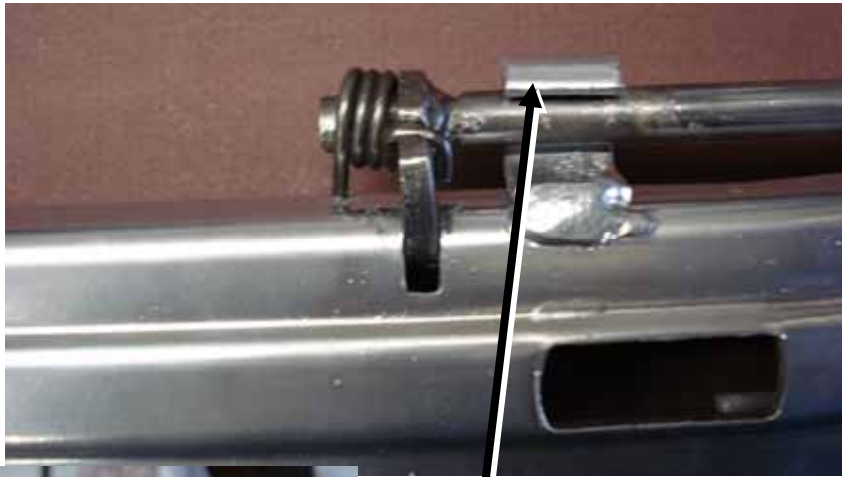
Upper (top) and lower seat tracks separated

Seat adjusters wire wheeled and spayed with Eastwood Rust Encapsulator to treat brackets.



Seat adjusters sprayed with Zinc-rich Krylon Aluminum

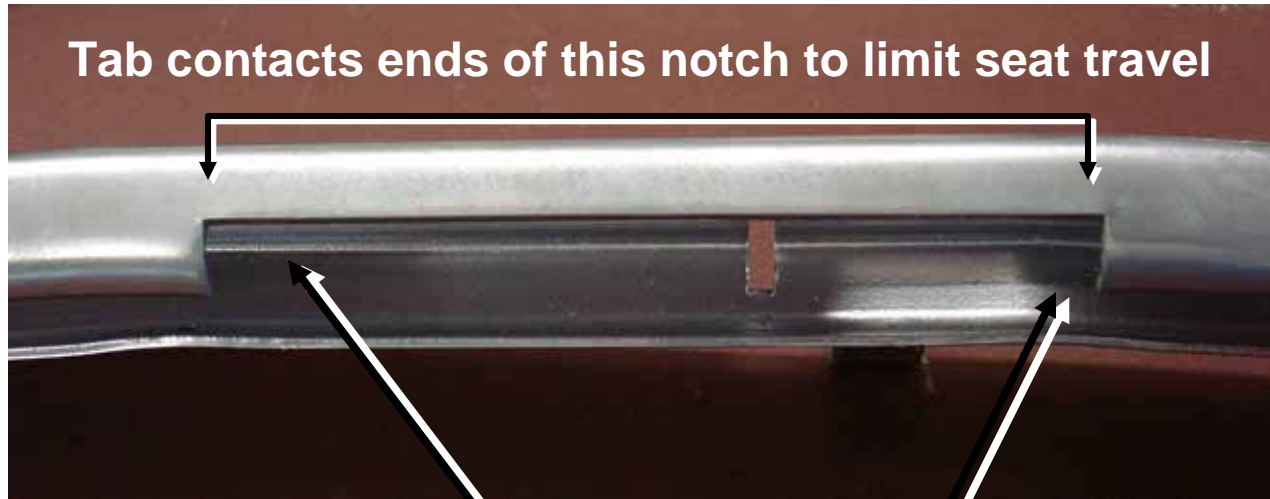




Seat adjuster release rod can be removed by carefully opening the clamps (shown here opened up in the top photos) on the seat track. Pay attention to spring placement on the adjuster rod so you can get it right on re-assembly of the rod into the clamps



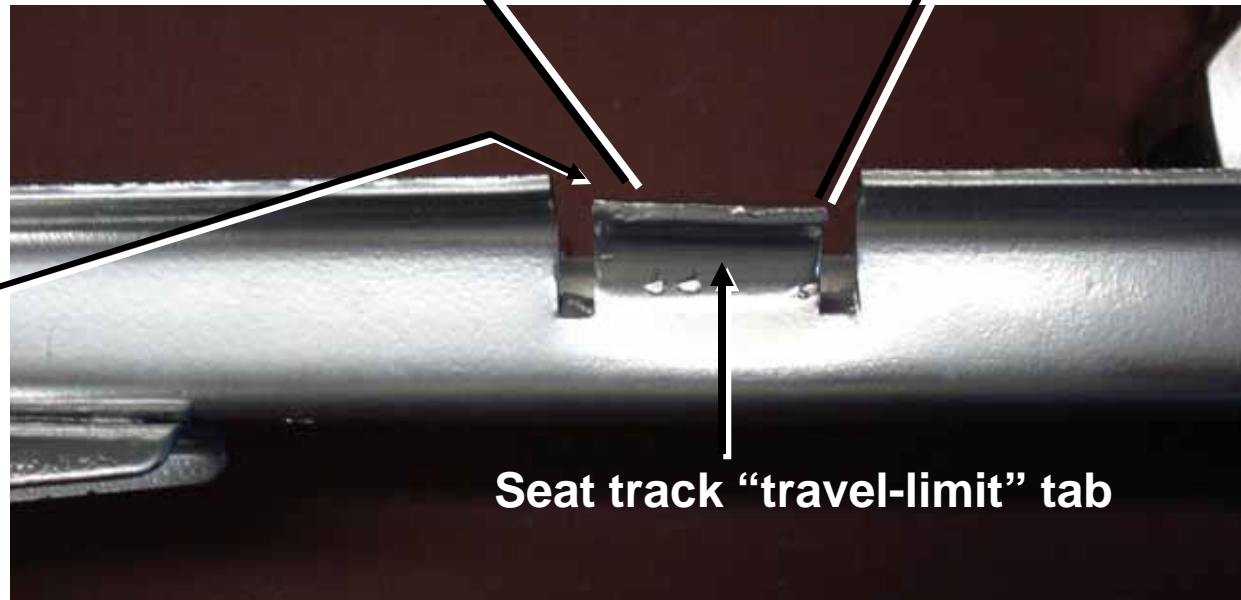
Seat adjuster rod engages in these slots



Tab contacts ends of this notch to limit seat travel



Top view of "tab" squeezed in



Seat track "travel-limit" tab

This "tab" must be bent inward in order to slide the upper and lower tracks apart. Upon re-assembly, Pry it back out so that it will limit the travel of the upper track in the lower.



Seat-track rollers and bearing cages



Seat track roller in bearing cage as it rides in lower track



Rear roller



Front roller

Tips for re-assembling top and lower seat tracks with the rollers and bearing assemblies.

These hints were provided by Neal of Paragon Reproductions Tech Support. Thanks to Paragon!

It is easier to reassemble the tracks if you remove the adjuster rod from the outboard set of tracks. Gently pry open the welded clamps that retain the front and rear of the rod. Remove the rod paying attention to the placement of the spring on the lacking tang at the rear so you can mount it correctly upon re-assembly.

Put the rear roller and bearing cage in place first and butt it up against the rivets in the lower track.

Now place the top rail over the bottom one starting from the front of the track assembly. Slide the top track back far enough over the rear roller (will take a little force to do this) so that you can place the front roller and bearing in the lower track. Bring the upper track back forward over the roller. The roller will stop at the rivets in the lower track and you can force the upper track over the roller.

Once upper and lower track are back together and moving smoothly, pry out the “travel-limit” tab on the lower track so that it will engage the ends of the slot in the upper track to limit the travel of the seat frame.

Reassemble the adjuster rod by placing it back in the clamps that you expanded earlier making sure that you have the spring properly engaged so that it will return the stop on the rod into the slots of the lower track when you release pressure on the rod.