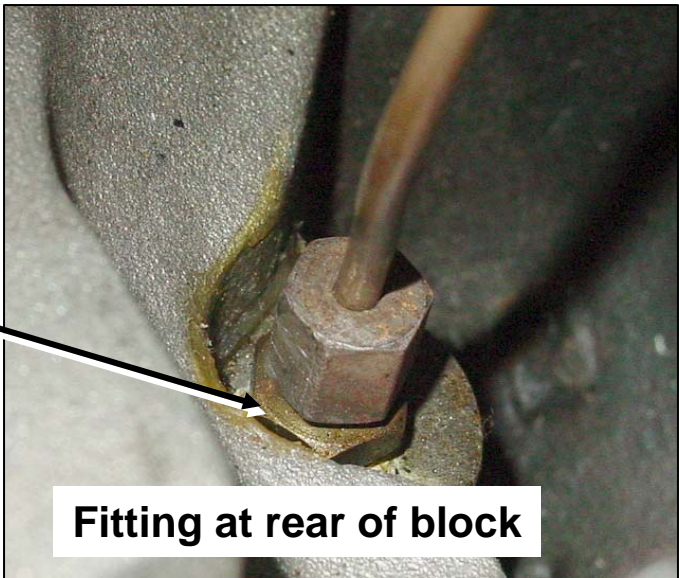
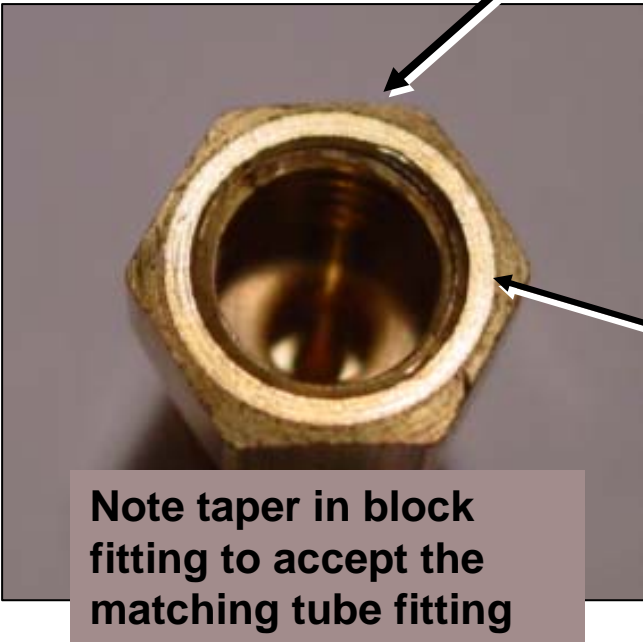
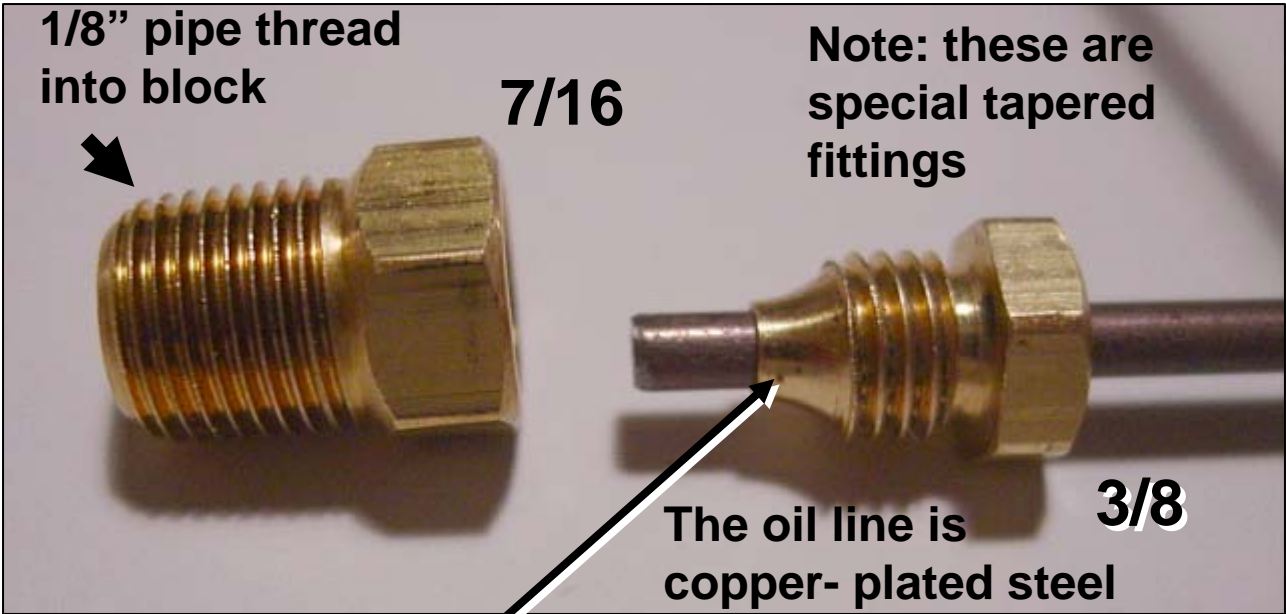


# Oil-Pressure Line Fittings for Mid-Year Corvette Gauge

**Oil line fittings for line to block**  
(the fittings below are listed for 56-73 oil lines by Paragon)

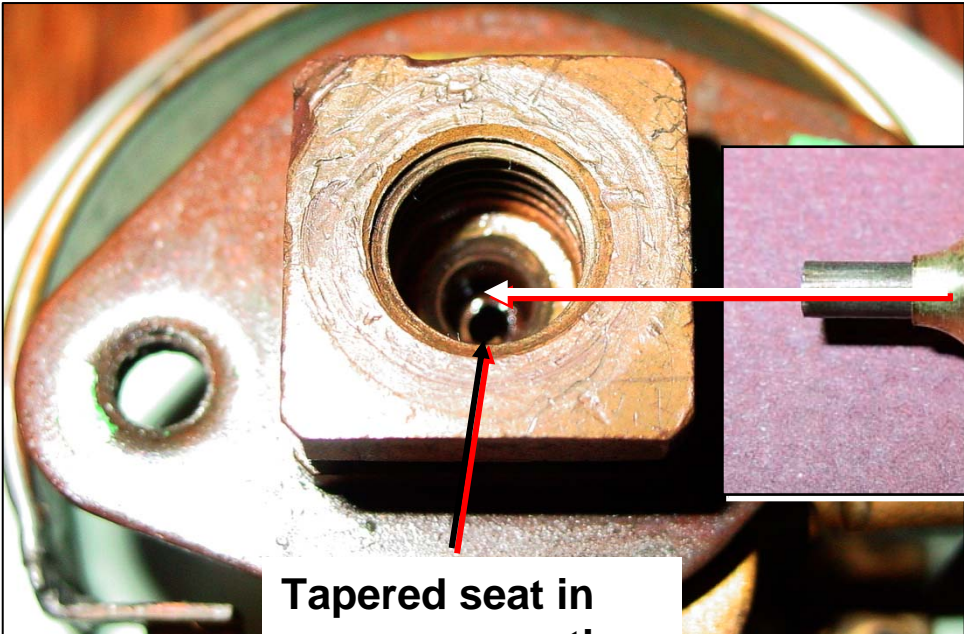
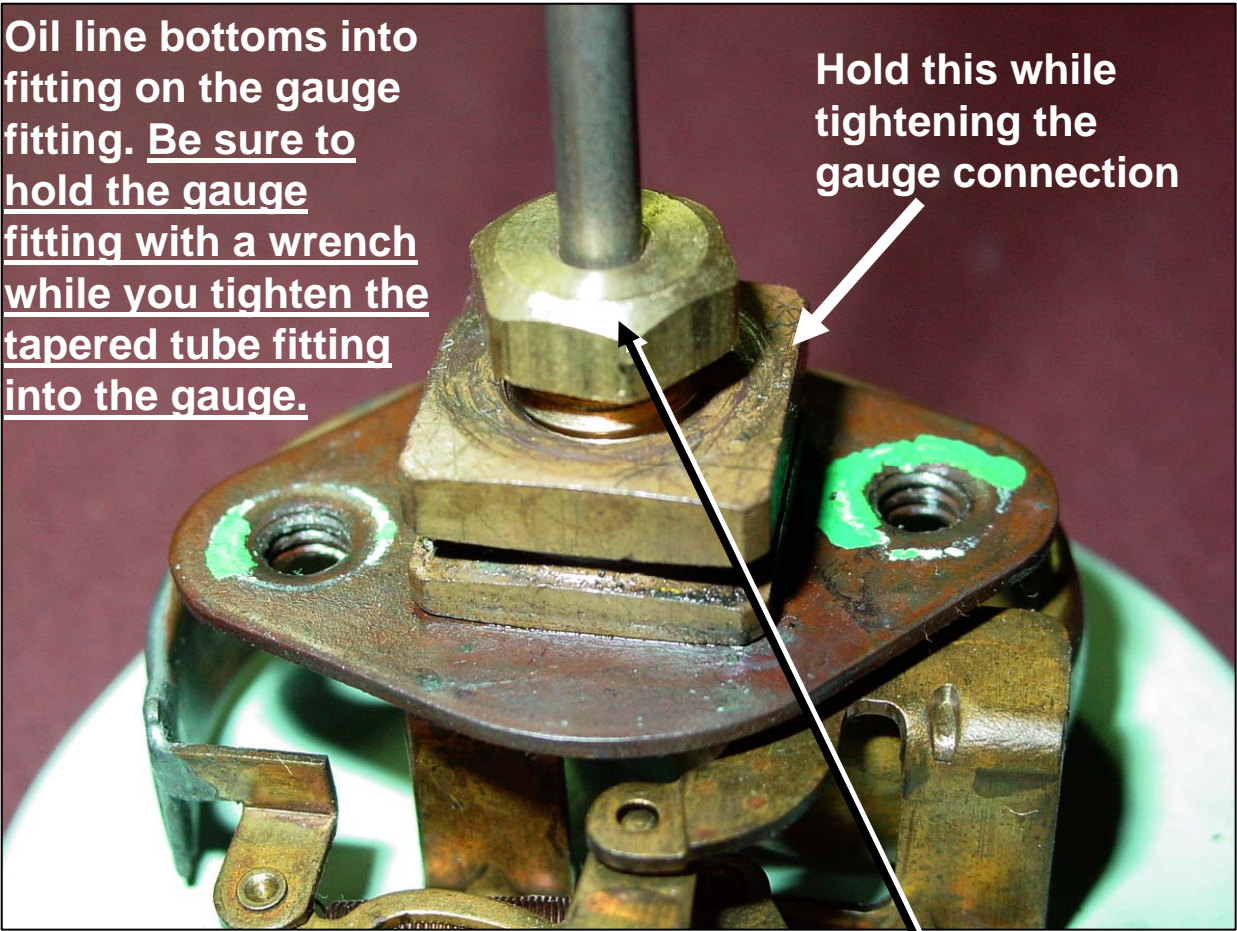


Dave Zuberer

# Oil Line Connection at Rear of Gauge

Oil line bottoms into fitting on the gauge fitting. Be sure to hold the gauge fitting with a wrench while you tighten the tapered tube fitting into the gauge.

Hold this while tightening the gauge connection



Tapered seat in gauge connection

