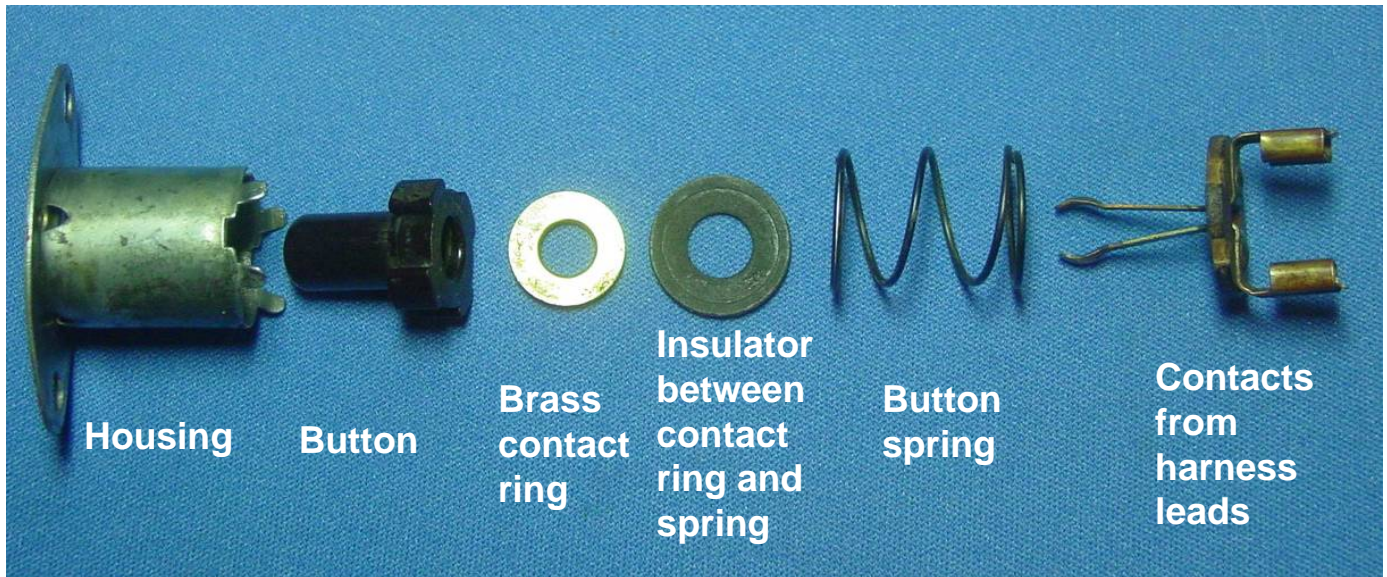
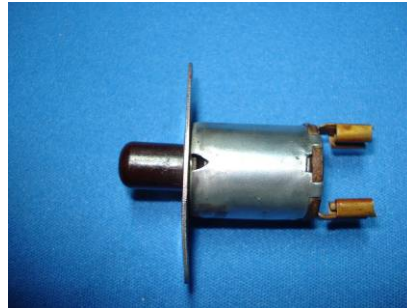


# C1 Courtesy lamp door switch

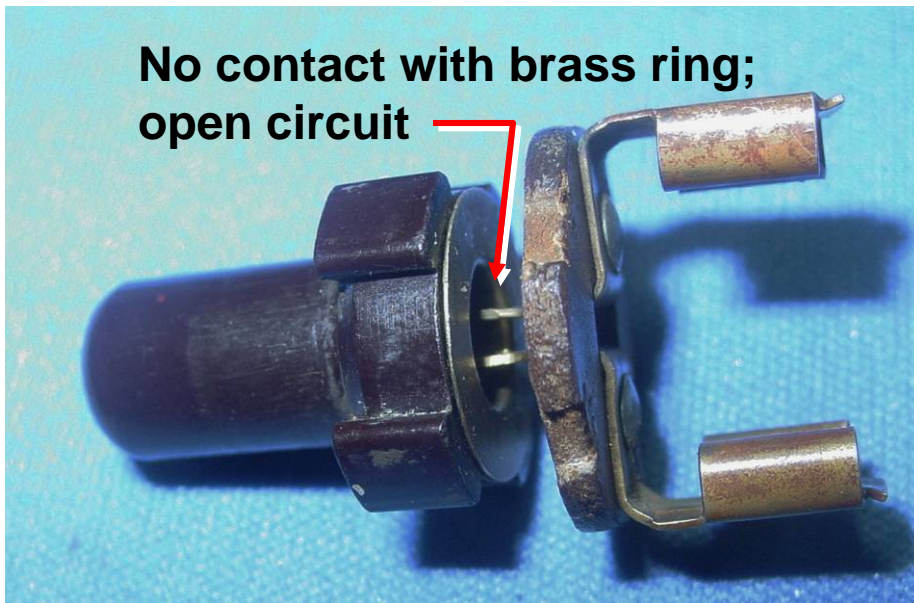


After rewiring our 60, the passenger door courtesy lamp switch was not lighting the lamp at all and the driver side was “jittery”. Here is what I found when I opened it up. It’s a fairly straight forward mechanism similar to the brake-light switch.

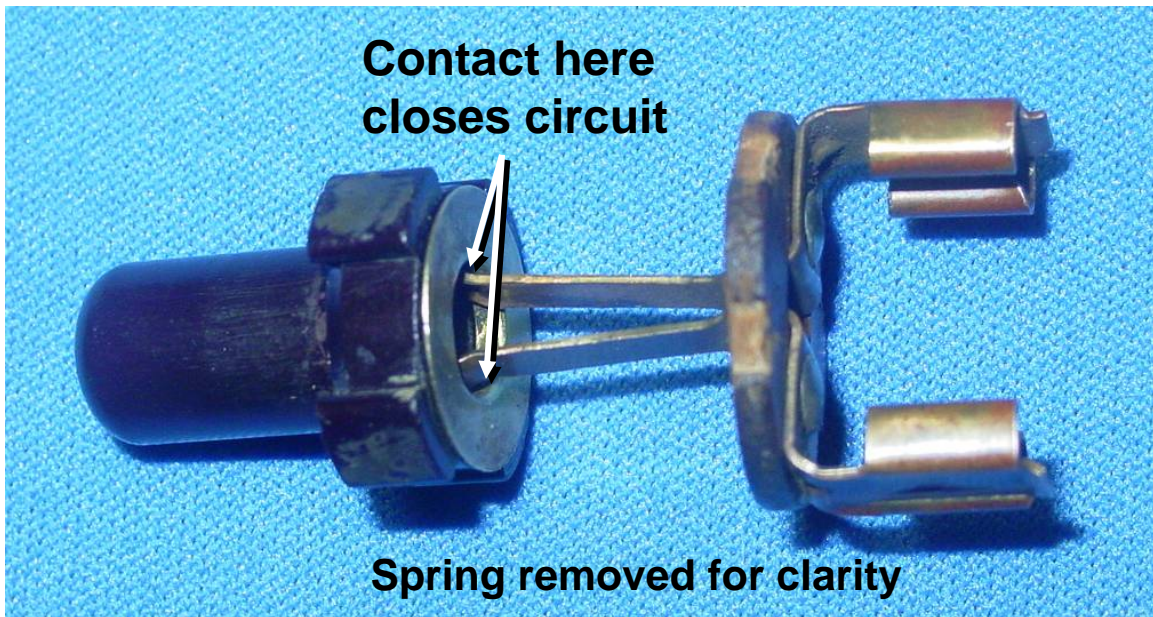
To open it just pry up on the four tabs to release the switch mechanism from the housing. Parts above are shown in order of assembly.

The button has a tapered inner hole that the two brass spoon-shaped contacts ride back and forth in. Pushing the button in squeezes them while the button traveling out allows them to expand to contact a brass ring (washer) on the button. The brass washer is insulated from the button spring.

Dave Zuberer 9-17-2009

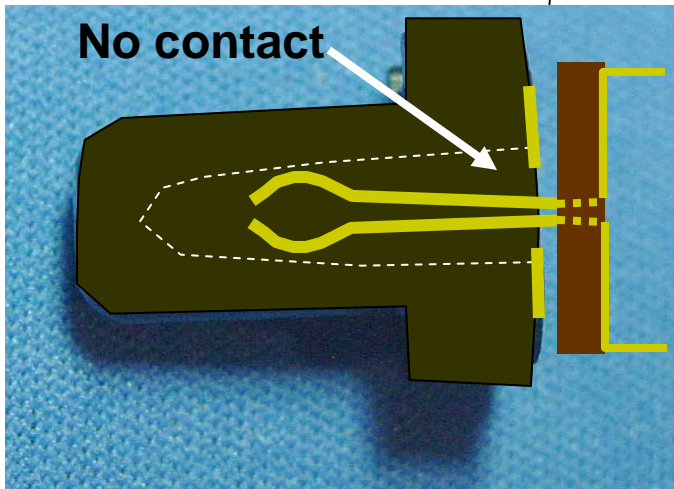
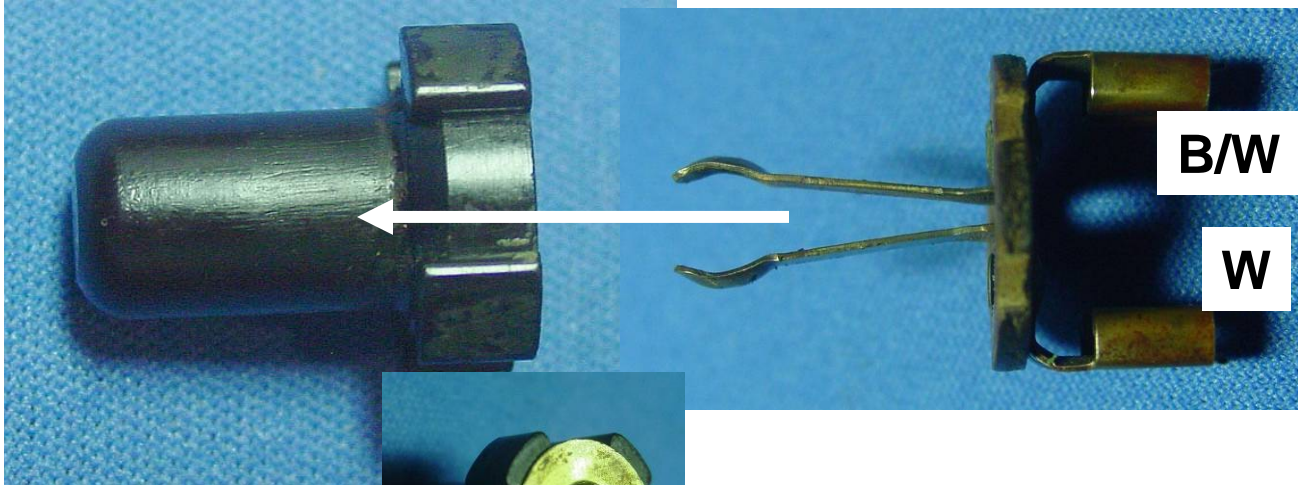


**Door closed, button in: leads do not contact the brass ring so circuit is open**



**Door open, button is out: leads make contact with the brass ring to close the circuit and light the courtesy lamp.**

# How it works:



When the door is closed the button “squeezes” the contacts away from the brass contact on the end of the button and the circuit is open: lights out. When the door is open, the button moves forward allowing the contacts to expand and make contact with the brass ring on the button to complete the circuit: lights on!

