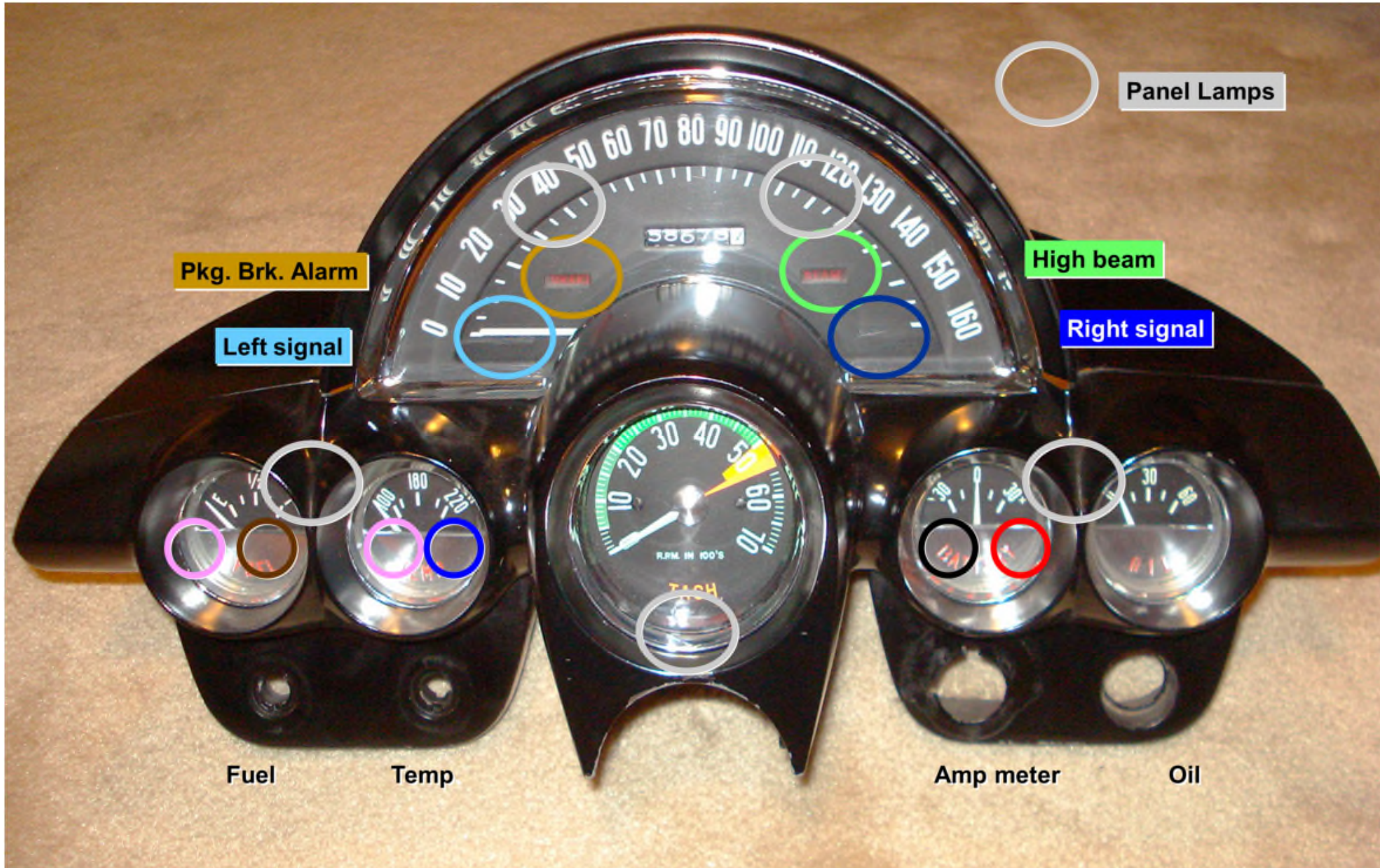
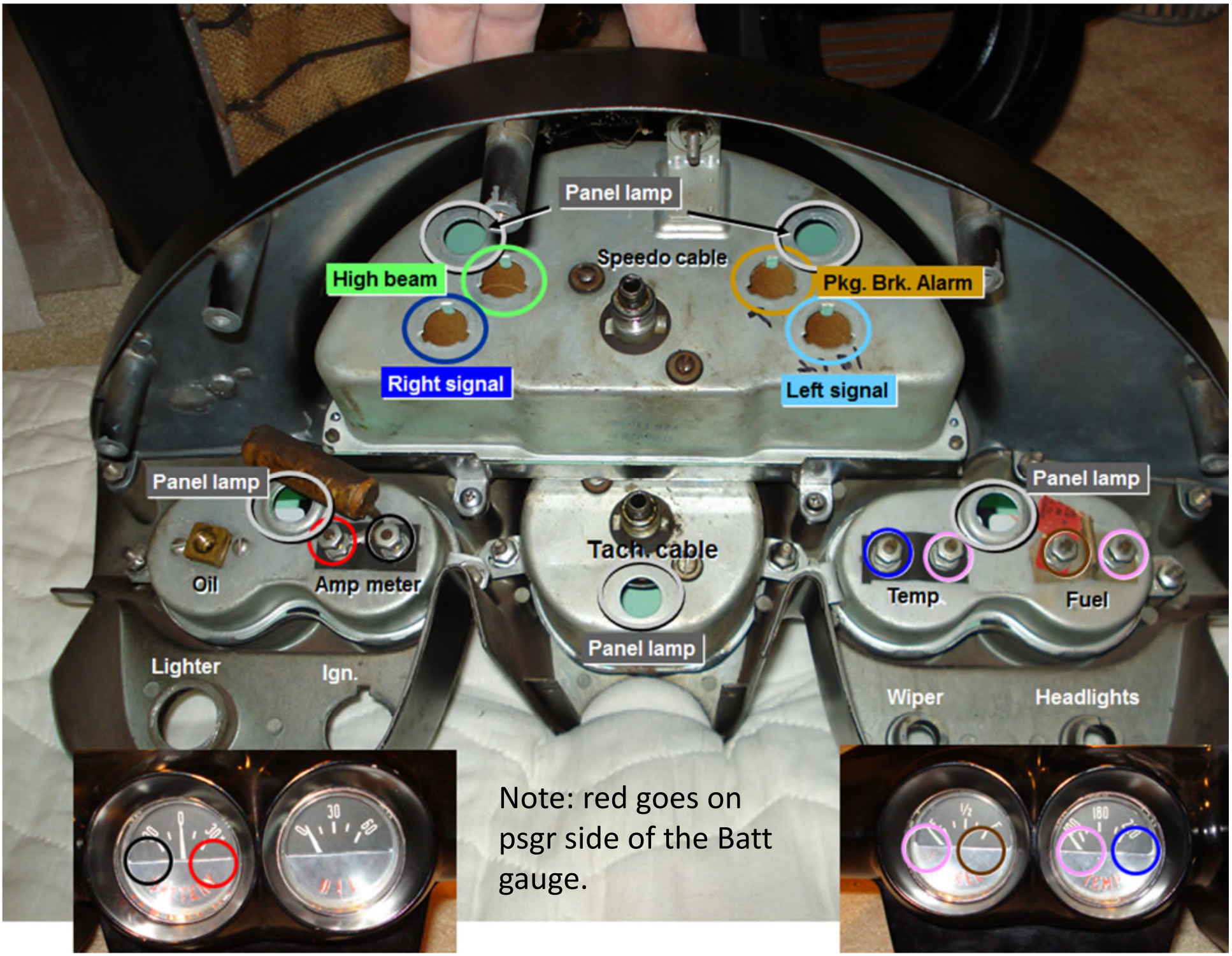


1960 Corvette Instrument Cluster Wire Connections

Shown here are the wiring connections for the instrument cluster on our 1960 Corvette. The colors are as they appear in the 1960 wiring diagram. Photos of the actual connectors were taken before the new LL harness was put in.

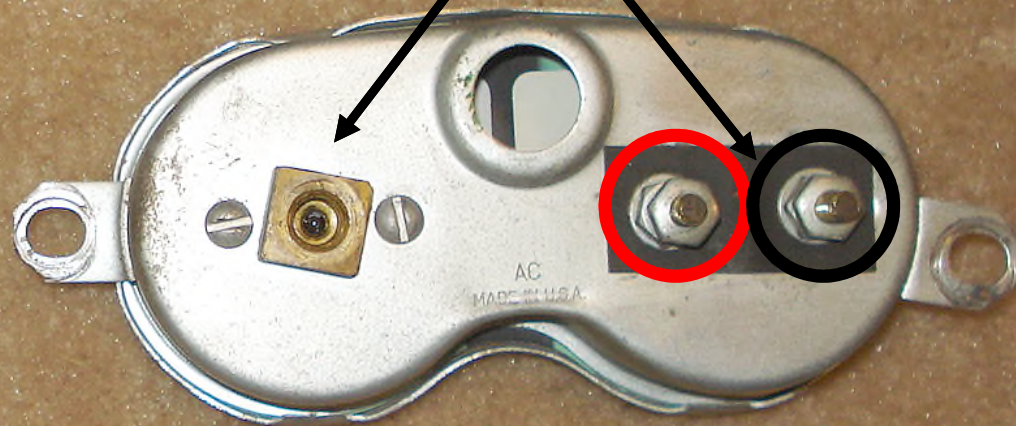
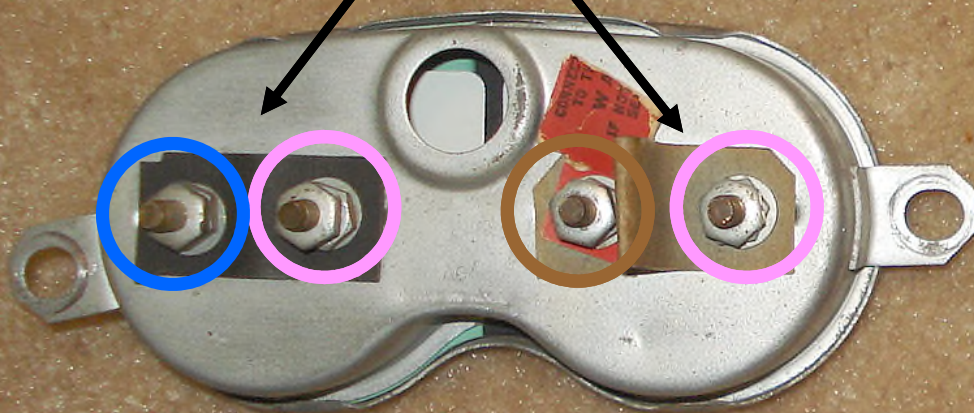


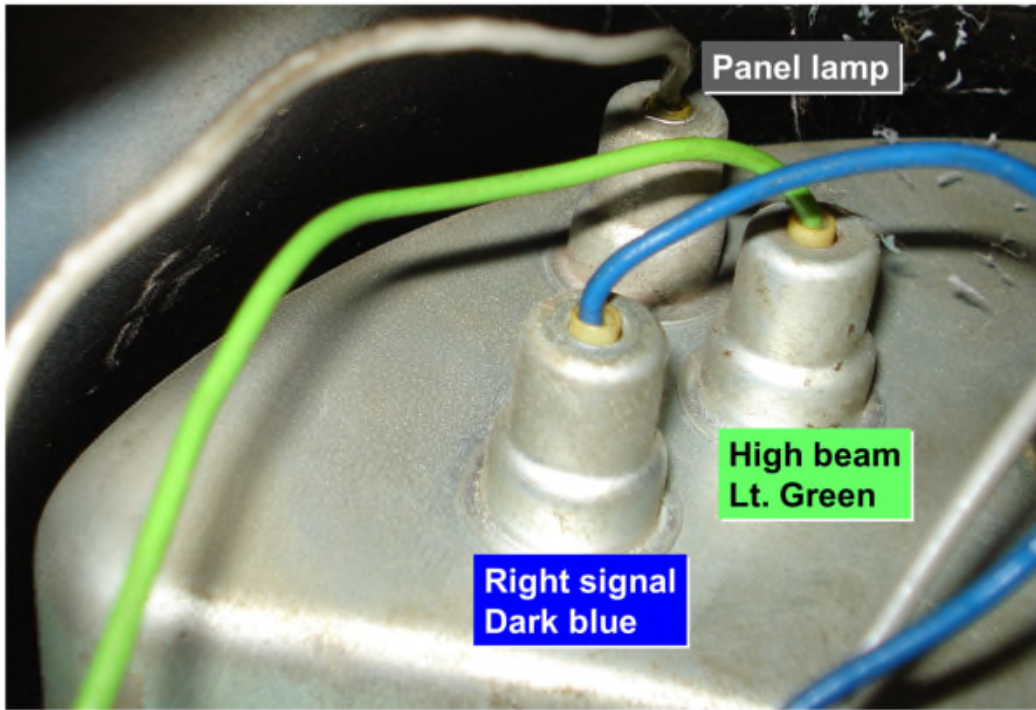


Note: red goes on psgr side of the Batt gauge.

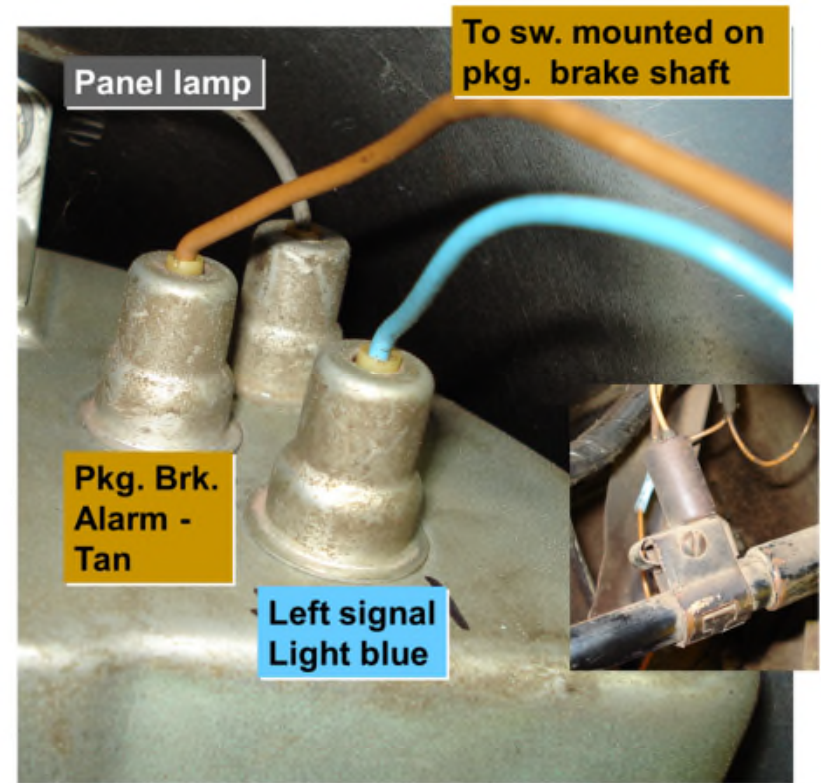


1960 Gauge connections





Passenger side



Driver side

