

Broken headlight-bezel attaching tabs: a “workable repair”?.

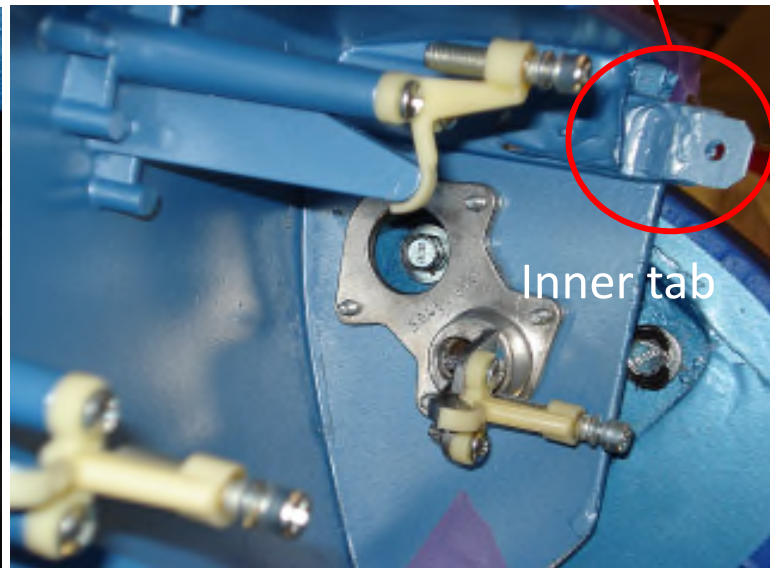
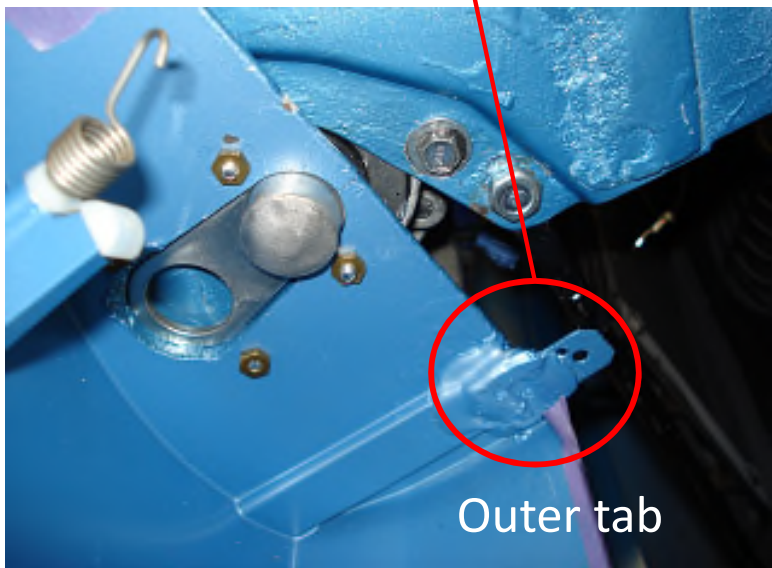
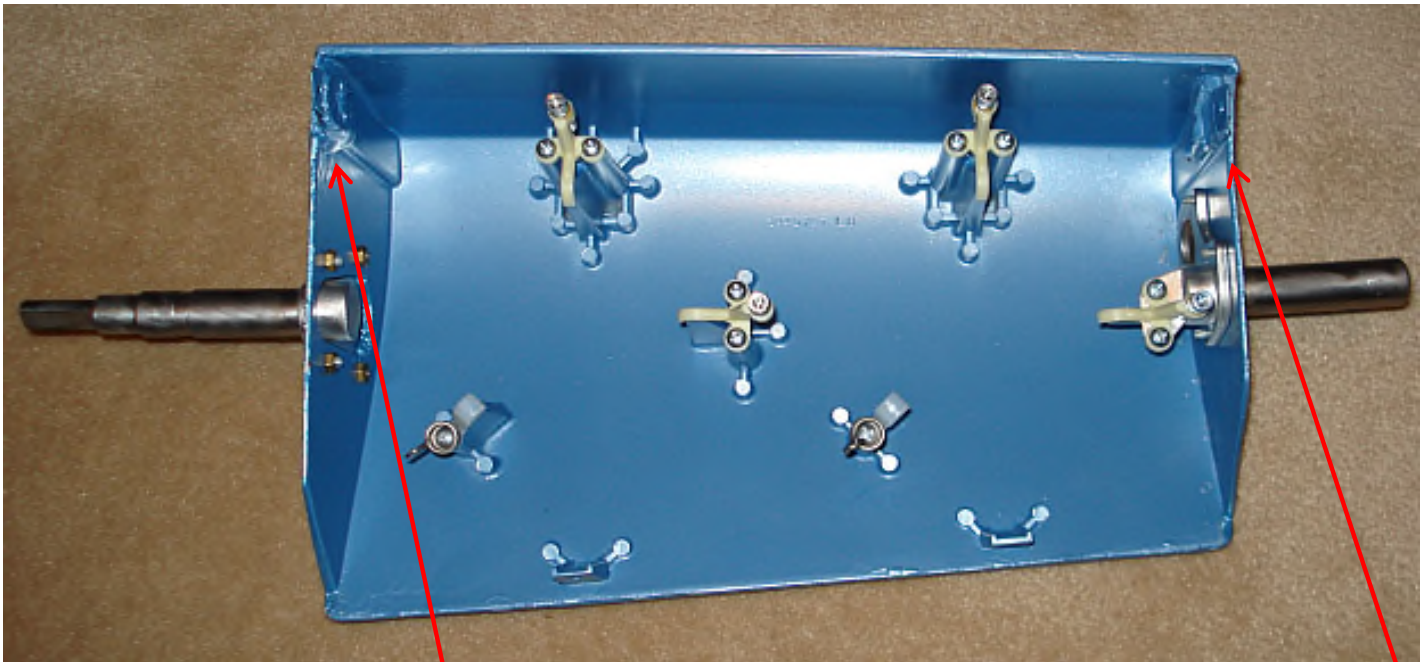
This is what I found on opening the driver-side headlight bucket. Both upper tabs had been replaced with sheet metal tabs JB Welded in place and drilled for sheet metal screws or u-nuts by a previous owner(s). Makes you wonder how they got that way! The makeshift tabs hold OK and so, for now, that’s how they will stay. One tab on the passenger bucket was partially broken but it holds a u-nut OK.

Fortunately, the bottom tabs are OK and the u-nuts hold just fine.

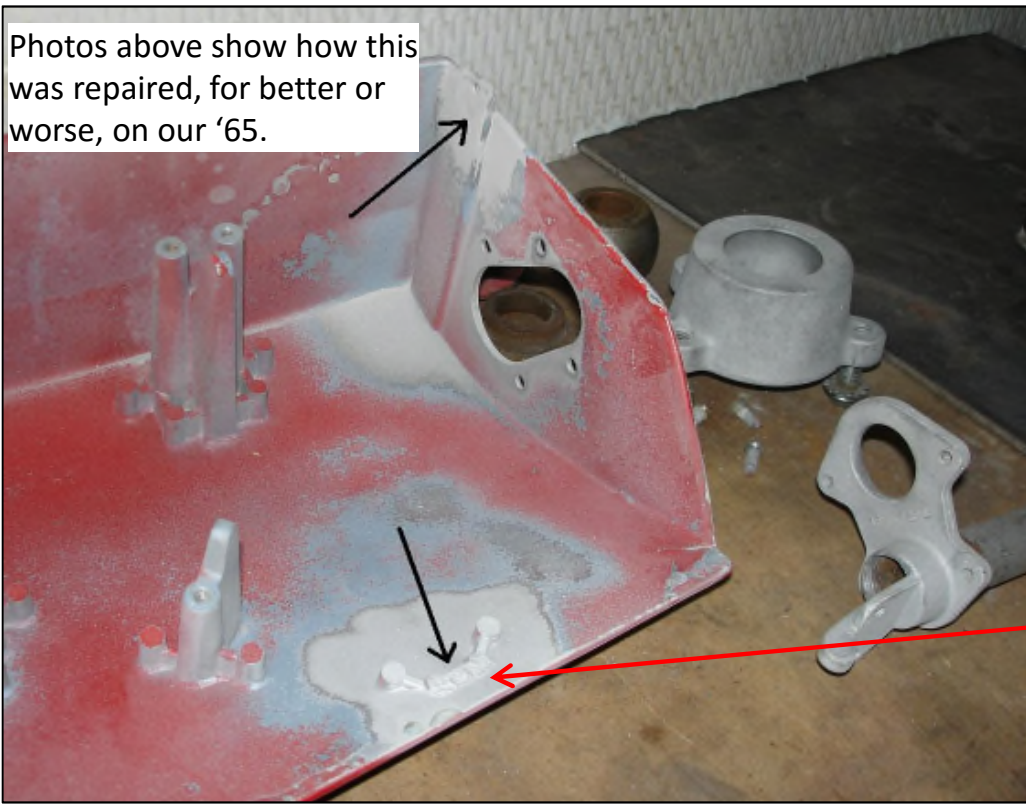
The jury-rigged tabs are a workable repair if you don’t want to buy replacement buckets or try to work on the delicate pot metal housing.

I throw this out only because it’s what I found on the ‘65 and the headlight bezels fit fine on both buckets and one does not see the “bubba” fix that I encountered when I decided to refurb the buckets. 😊

Dave Zuberer



Photos above show how this was repaired, for better or worse, on our '65.



Suggestion for a possible repair of a broken lower bezel attachment tab.

Grind or file this area flat. Bend a right-angle tab out of 1/16th inch aluminum bar of appropriate width and JB weld it to the bucket. Drill the hole before attaching to the bucket. Build up the epoxy around and over the sides of the tab against the bucket to get a solid attachment.

