

1965 Coupe Antenna Wire Routing



Some brief information on routing the antenna cable of a “65 AC Coupe.

The antenna cable is routed along the z-bar and down behind the kick panel and front carpet (see AIM pg. U69 A1 below). Start by removing the driver-side kick panel and the sill plate. Pull back the carpet to expose the carpet support and clips. Remove the carpet support to expose the rear body harness and antenna cable. Remove the quarter panel trim behind the driver’s seat and remove the rear blower assembly cover carpet panel. The rear body harness and the antenna cable are routed as shown in the ‘65 AIM U69 Sht. A1 (see next page).



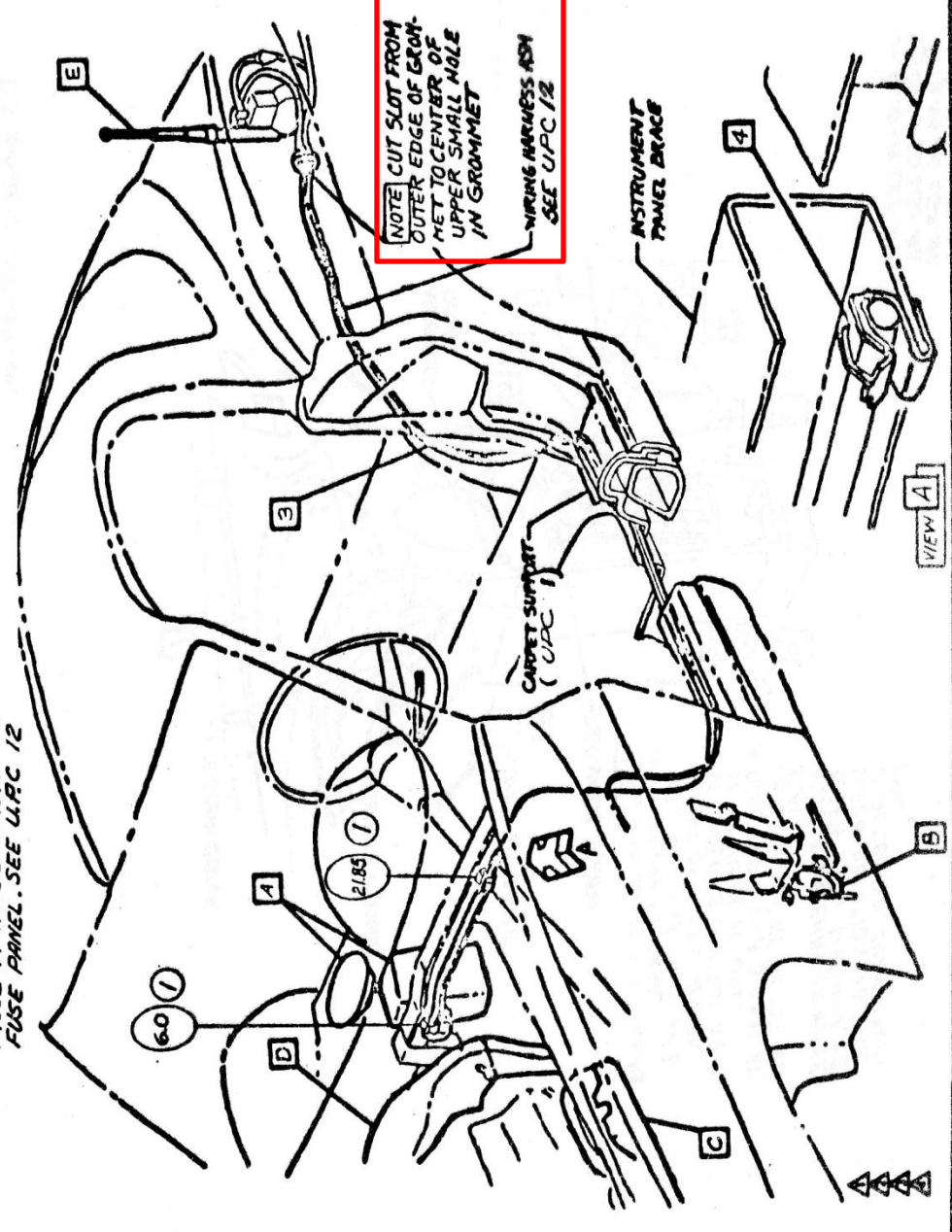
REBUILD

ASSEMBLY INSTRUCTIONS

3865300 CORVETTE 19000 SERIES

SHEET	TITLE	SHEET	TITLE
A	CONTENTS - RECEIVER, SPEAKER, ANTENNA SWITCH & WIRING.	A9.	IGNITION SHIELD UPC L78
B	RECEIVER, SPEAKER, ANTENNA SWITCH, & WIRING.	A10.	
C	GROUND STRAP	A11.	
D	SPARK PLUG SHIELD R.H. L.M.	B1.	ANTENNA INSTALLATION
E		B2.	
F			<i>NOT ILLUSTRATED ON THIS SHEET</i>
			<i>TITLE</i>
		A5.	CAPACITORS
		A6.	CAPACITORS & STATIC COLLECTOR

- 1** INSTRUCTION SHEET & POCKET GUIDE
SEE U.P.C. 14 - MISC. SHIPPING LIST
- 2** 9419783 FUSE - INSERT INTO RECEIVER MARKED "RADIO" ON FUSE PANEL. SEE U.P.C. 12
- 3** 3832331 CABLE ASM.
- 4** 3827371 CLIP



* CHEVROLET MOTOR DIVISION, G.M.C. *		UPC	DATE	SYM	REVISION	RECORD	AUTH.	DR	CK
RADIO AM/FM - RECEIVER, SPEAKER, ANTENNA SWITCH & WIRING - CONTENTS		U69	8-27-64	1	DIM. ADDED (2) PLACES	64727	EX	CI	
19000		A1.	9-15-64	2	SHEETS AID. ALL ADDED	68948	BY	CI	
DWG. NO. 19000	DATE REL. 6-4	REF. PROJ. A1	L.	L.	L.	L.	L.	L.	L.

U69 AM/FM RADIO

SECTION #14 DOOR SILLS AND ROCKER PANELS

PART#	NAME	YEAR	#NEED	PRICE	INC
01A	DOOR SILLS- 4 HOLE (PR)	63-4E	1 PR	32.00	PAIR
01B	DOOR SILLS- 6 HOLE (PR)	64L-6	1 PR	32.00	PAIR
01C	DOOR SILLS (PR)	67	1 PR	49.00	PAIR
02A	DOOR SILL SCREWS (8 PC)	63-4	1 SET	4.00	SET
02B	DOOR SILL SCREWS (12 PC)	65-7	1 SET	6.00	SET
03A	CARPET SUPPORT (WIRE COVER) (PR)	63-4	1 PR	20.00	PAIR
03B	CARPET SUPPORT (WIRE COVER) (PR)	65-7	1 PR	20.00	PAIR
03C	CARPET SUPPORT CLIP	63-7	14	4.00	EACH
03D	CARPET SUPPORT CLIP RIVETS (14 PC)	63-7	1 SET	3.50	SET
04	ROCKER PANEL SUPPORT STRIP	63-7	2	10.00	EACH
05	ROCKER PANEL SUPPORT SCREWS (12 PC)	63-7	1 SET	6.00	SET
06	ROCKER PANEL SUPPORT U-NUTS (12 PC)	63-7	1 SET	3.00	SET
07A	ROCKER PANEL (63)	63	2	-	N/A
07B	ROCKER PANEL (64)	64	2	164.00	EACH
07C	ROCKER PANEL (65)	65	2	-	N/A
07D	ROCKER PANEL (66)	66	2	118.00	EACH
07E	ROCKER PANEL (67)(NOS)	67	2	164.00	EACH
08	END SCREWS AND NUTS (4 PR)	63-7	1 SET	3.00	SET
10A	LOWER ROCKER MOLDING SCREWS (14)	63-4	1 SET	7.00	SET
10B	LOWER ROCKER MOLDING SCREWS (14)	65	1 SET	7.00	SET
10C	LOWER ROCKER MOLDING SCREWS (8 PC)	66-7	1 SET	4.00	SET
11A	PLASTIC NUTS (14 PC)	63-5	1 SET	7.00	SET
11B	PLASTIC NUTS (8 PC)	66-7	1 SET	4.00	SET
12A	ROCKER FRONT BRACKET (LH) (RIVET TO FENDER TIP)	63-7	1	5.00	
12B	ROCKER FRONT BRACKET (RH) (RIVET TO FENDER TIP)	63-7	1	5.00	
13	RIVETS (FOR #12)(4 PC)	63-7	1 SET	1.00	SET
14A	ROCKER SUPPORT BRACKET (WELD TO ROCKER SIL)	63-5	10	10.00	EACH
14B	ROCKER SUPPORT BRACKET (WELD TO ROCKER SIL)	66-7	6	10.00	EACH
14C	ROCKER BRACKET- FRONT LH (WELD TO ROCKER SIL)	63-5	1	15.00	
14D	ROCKER BRACKET- FRONT RH (WELD TO ROCKER SIL)	63-5	1	15.00	
16A	FENDER TIPS (WITHOUT SIDE EXHAUST)(FRONT)(2 PC)	63-7	1 PR	60.00	PAIR
16B	FENDER TIPS (WITHOUT SIDE EXHAUST)(REAR)(2 PC)	63-7	1 PR	60.00	PAIR
17	DOOR SILL METAL REINFORCEMENT(ROCKER CHANNEL)	63-7	1	N/A	
18	COUPE DOOR SILL PLUG (UNDER SILL)(PR)	64-7	1 PR	2.00	PAIR

↑ SEE SECTION 33 FOR SIDE PIPES & COVERS ETC

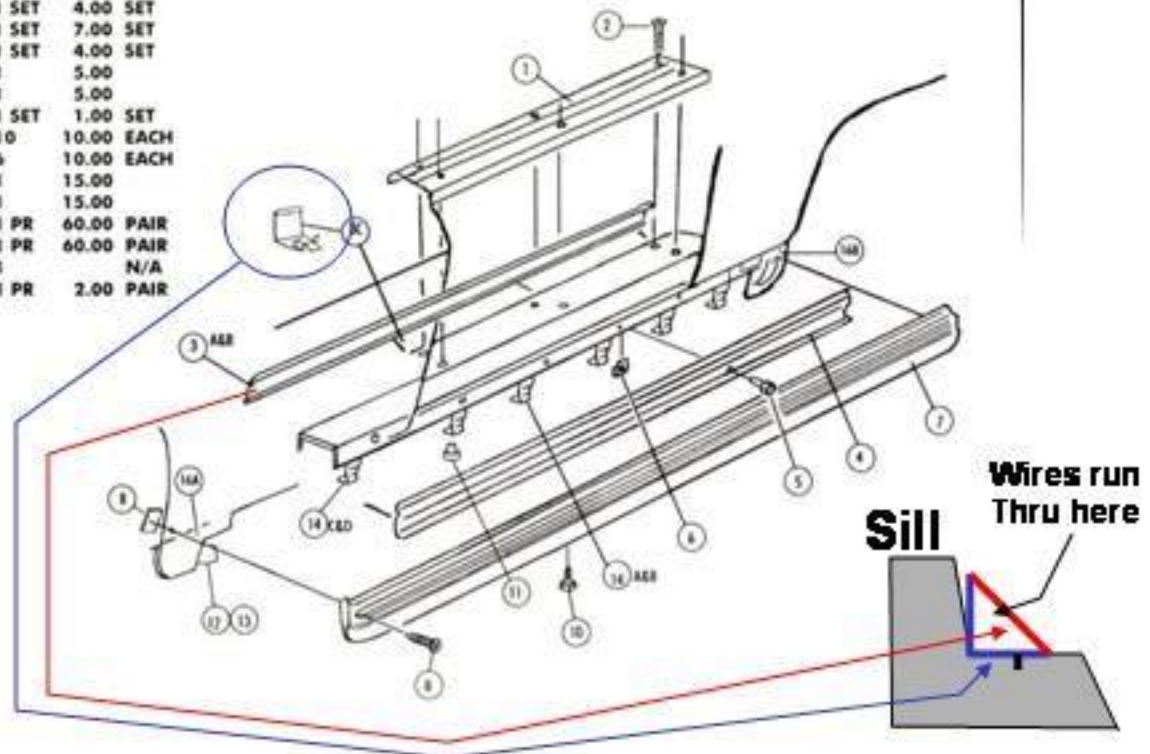
1-800-466-6367

1-800-466-6368 PH: 631-225-3000

FAX 631-225-5030

WWW.LICORVETTE.COM

CHECK WEBSITE FOR PRICE CHANGES & UPDATES





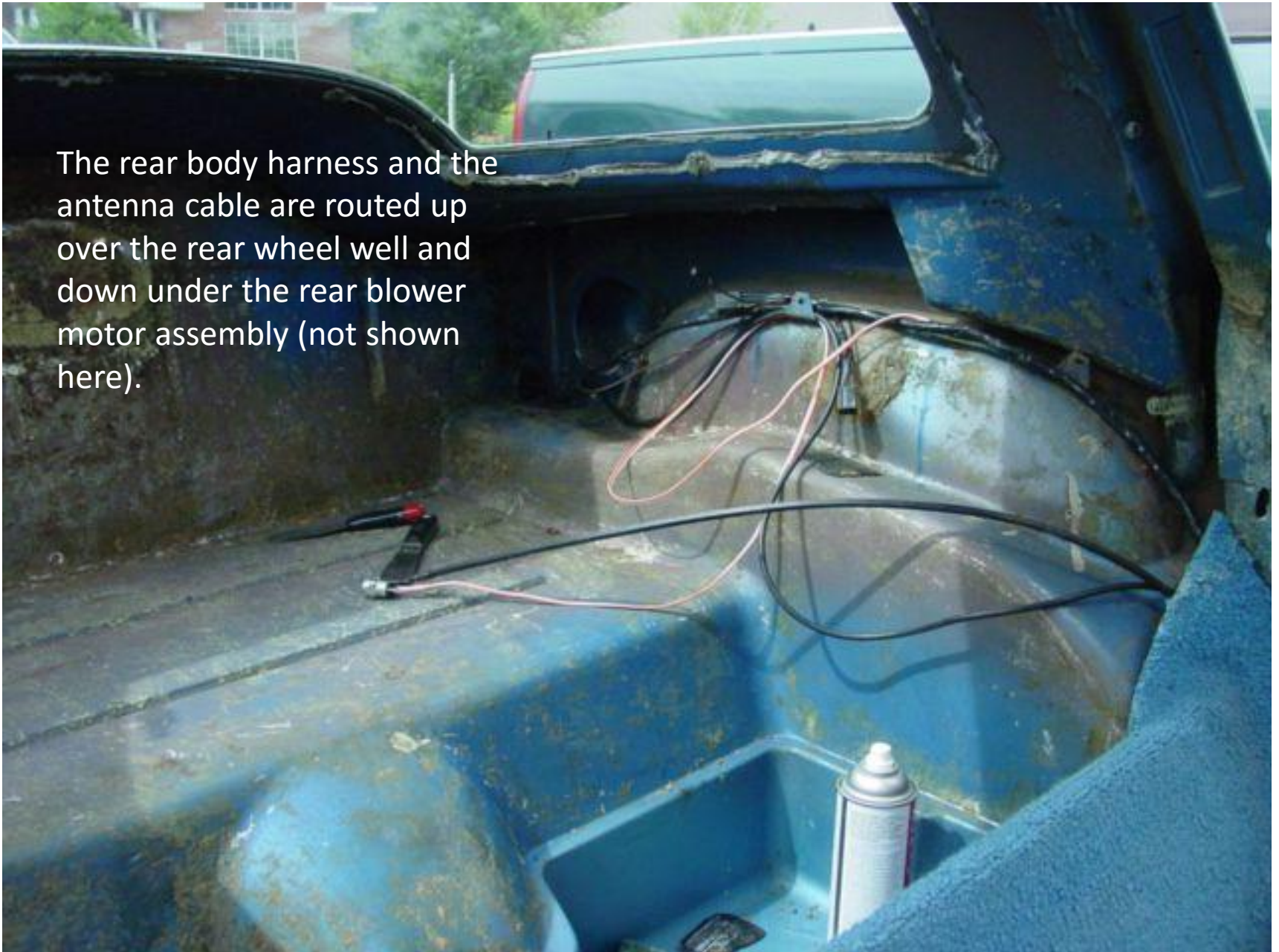
Gently pry
down here to
release bottom
of clip

A close-up photograph of a teal-colored car interior panel. The central area has a textured, pebbled surface, while the borders are made of a smoother, leather-like material. Several silver screws are visible, securing the panel. The panel is part of a larger assembly, likely a blower assembly cover.

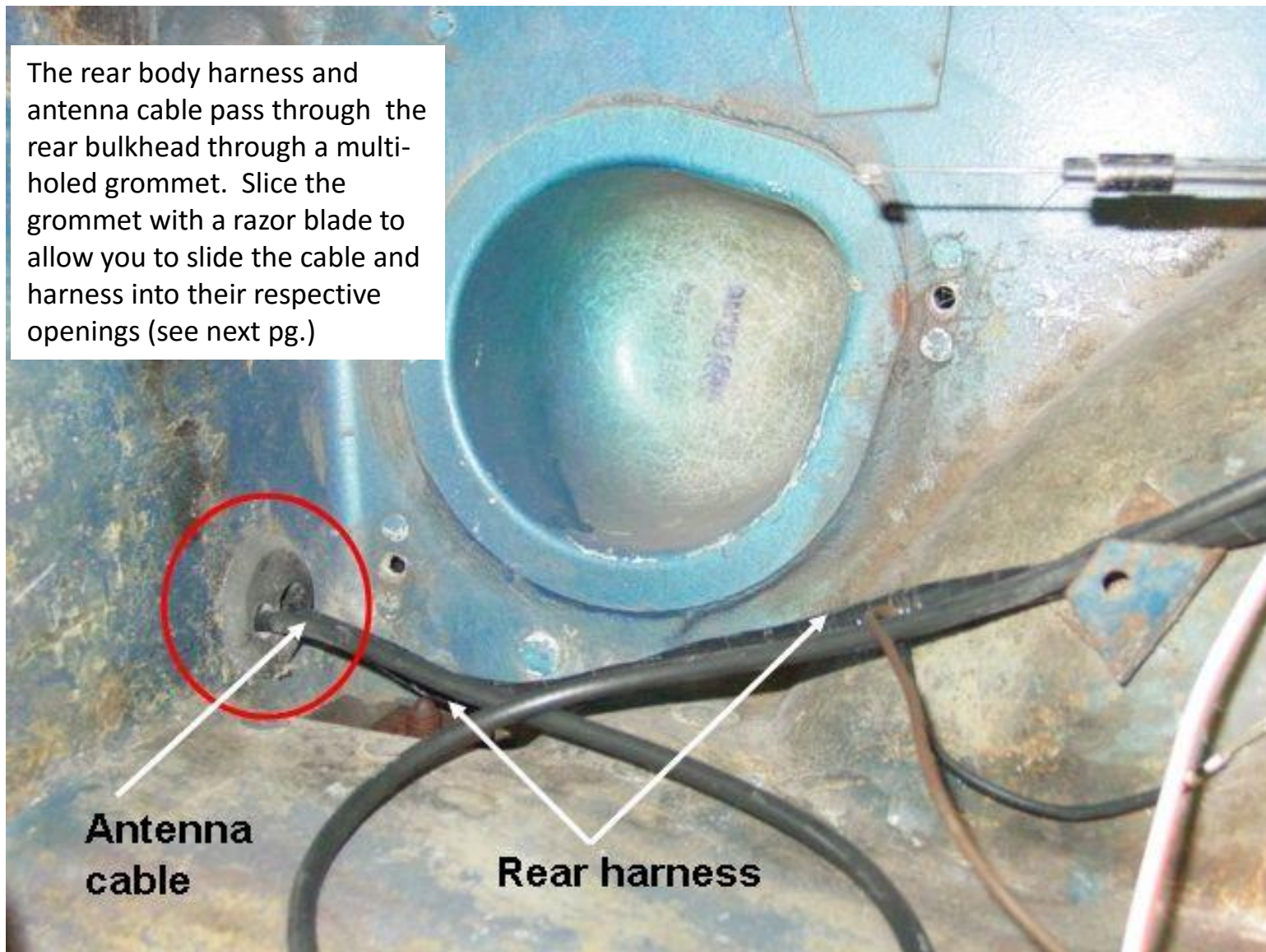
Blower Assembly Cover Panel

**Driver-side
"quarter panel"
behind seat**

The rear body harness and the antenna cable are routed up over the rear wheel well and down under the rear blower motor assembly (not shown here).



The rear body harness and antenna cable pass through the rear bulkhead through a multi-holed grommet. Slice the grommet with a razor blade to allow you to slide the cable and harness into their respective openings (see next pg.)



**Antenna
cable**

Rear harness

Antenna cable and rear harness routing – 1965 Coupe

The antenna cable and rear lamp harness pass thru a 2-hole grommet in the rear bulk head. They run together over the left rear well and down along the rear door pillar then along the sill under a carpet support (if you still have them). The rear harness connects to the rear body connector from the dash harness and the antenna runs up and over along the z-bar and down to the radio. See U69 Sheet A1.



Make cuts with a razor blade here and here to slip the cables in.



2 Hole Grommet

Paragon Number: 279

GM Part Number:

2 hole grommet, 2" O.D.

- Oil pressure line grommet, w/o A/C. Located in firewall.
- Antenna cable grommet. Located in rear bulkhead panel above #4 body mount, L.H.
- Rear lamp harness grommet. Located in rear bulkhead panel above #4 body mount, L.H.

Years: 1963 - 1967

Condition: New

Packaging: Each

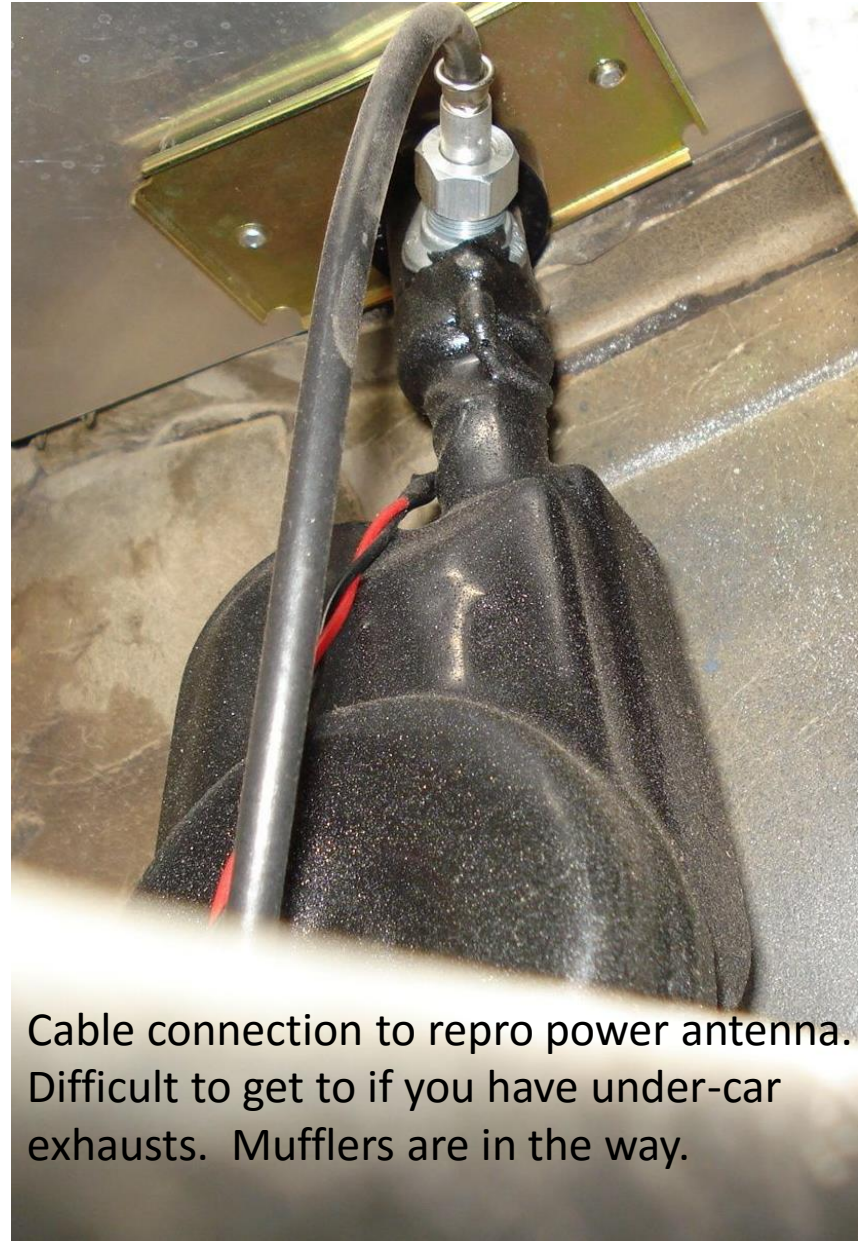
Type: Stock



The rear body harness and the antenna pass through the grommet below the rear blower assembly.



Back side of the rear bulkhead



Cable connection to repro power antenna. Difficult to get to if you have under-car exhausts. Mufflers are in the way.