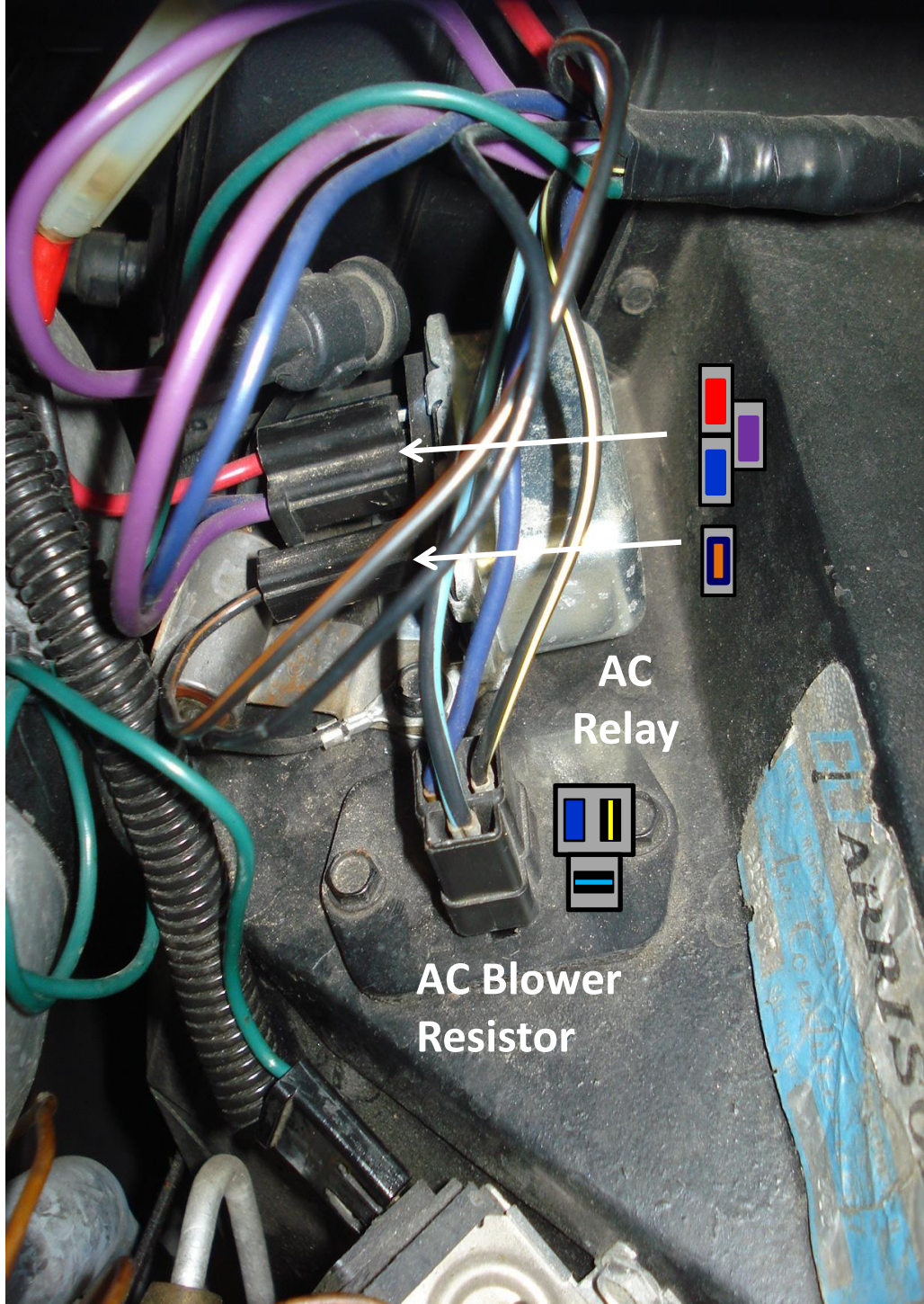
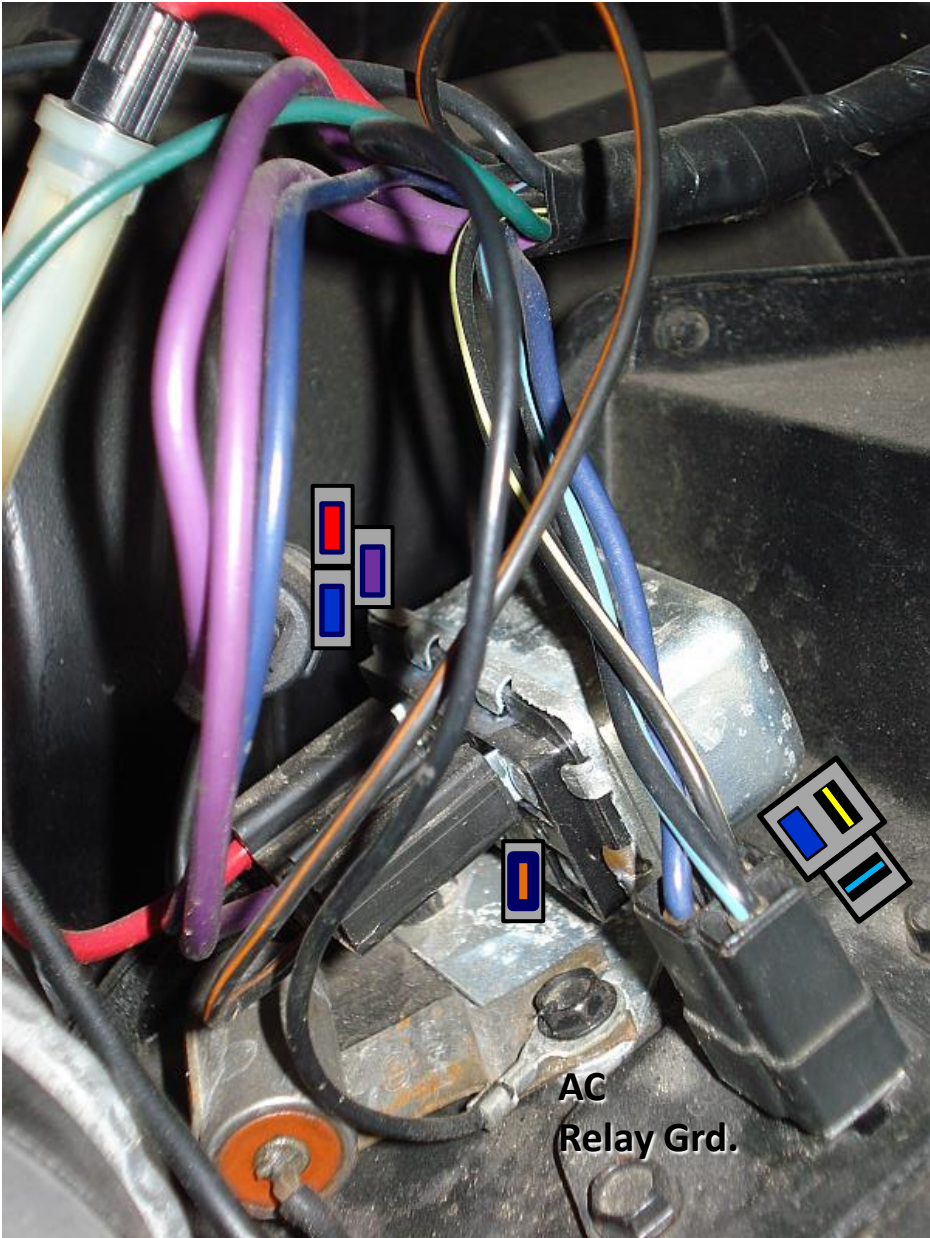


Engine harness connections for the AC/heater blower motor, blower relay and blower resistor. Photos shown here are from my 1965 AC coupe rewired with a Lectric Limited harness set.

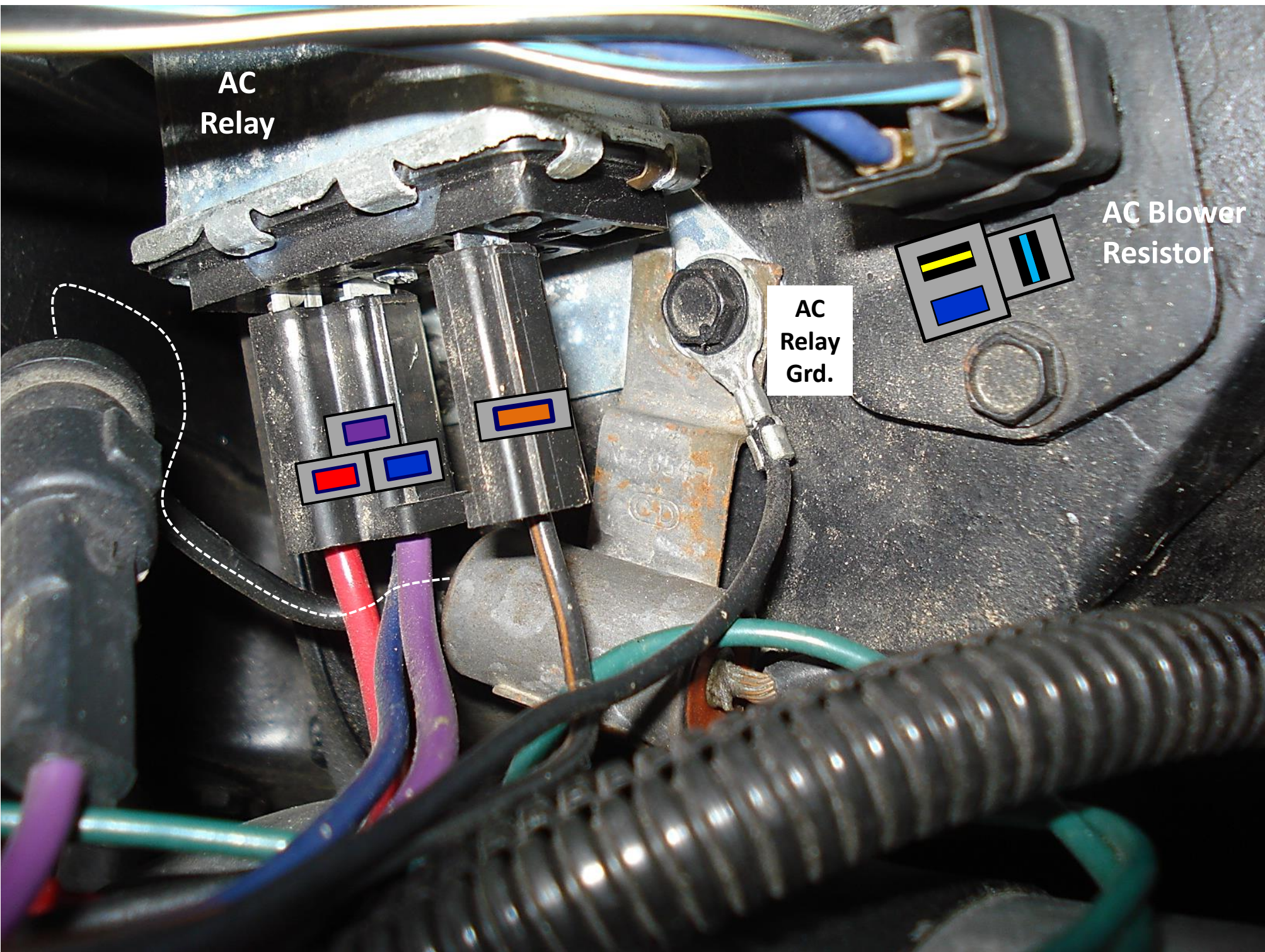
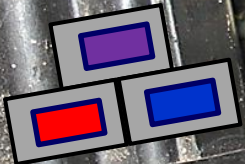
Dave Zuberer

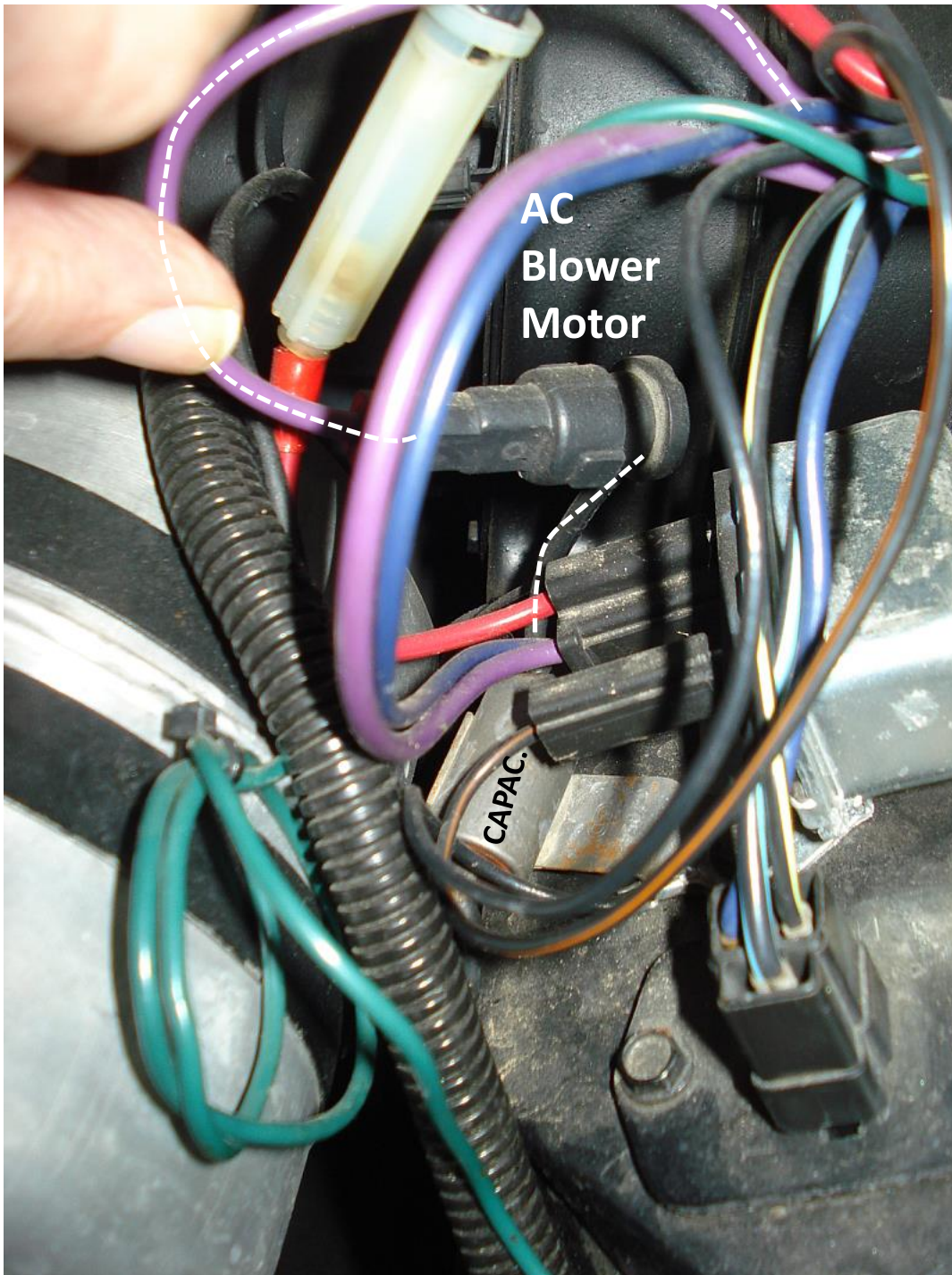


AC
Relay

AC Blower
Resistor

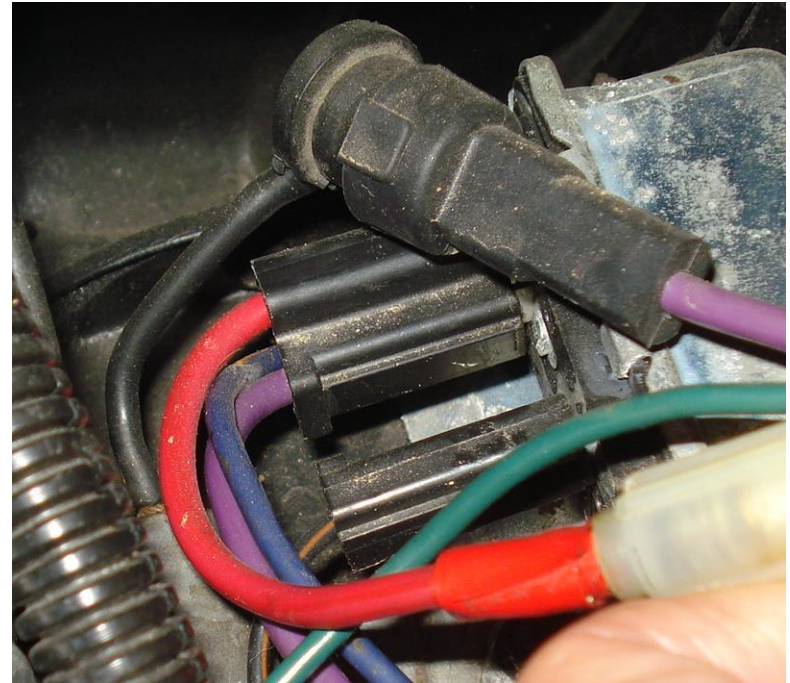
AC
Relay
Grd.



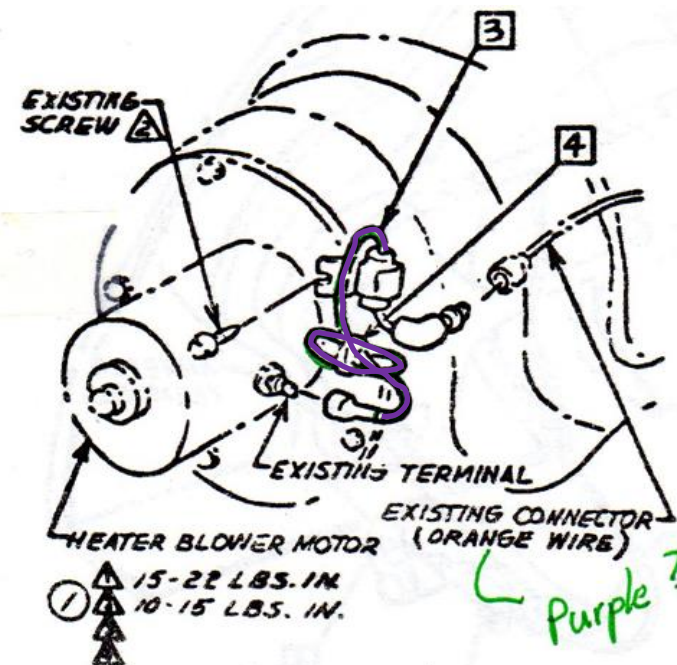


AC
Blower
Motor

CAPAC.



The capacitor is probably supposed to be mounted to the blower motor using an existing screw in the case

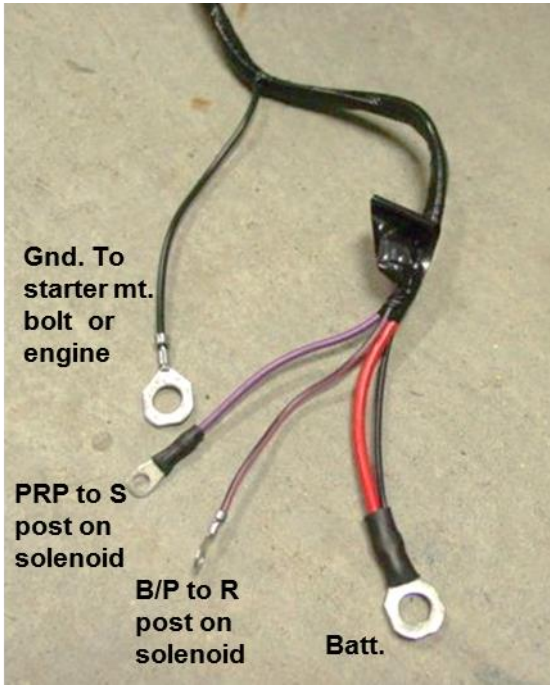
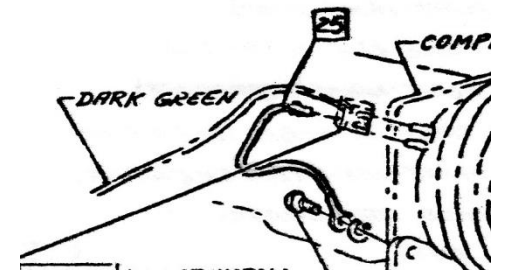


- 2876404 COLLECTOR ASM-STATIC
- 1964086 CAPACITOR ASM
- 3047075 CAPACITOR ASM
- 3729051 TAPE-6 INCHES REQUIRED TO COX F TAPE EXCESS CAR WIRE

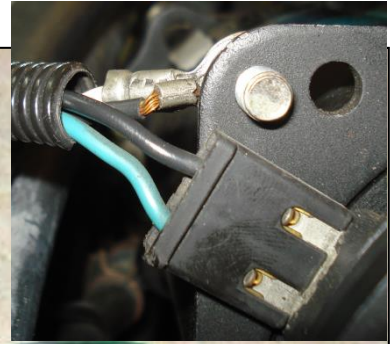
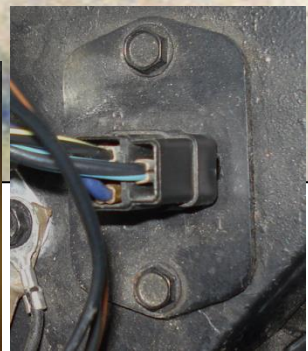
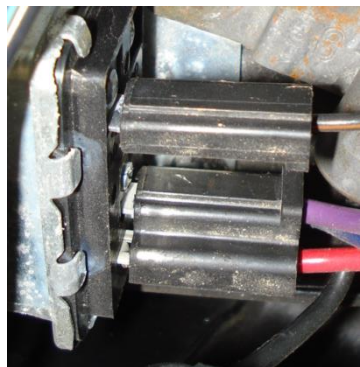
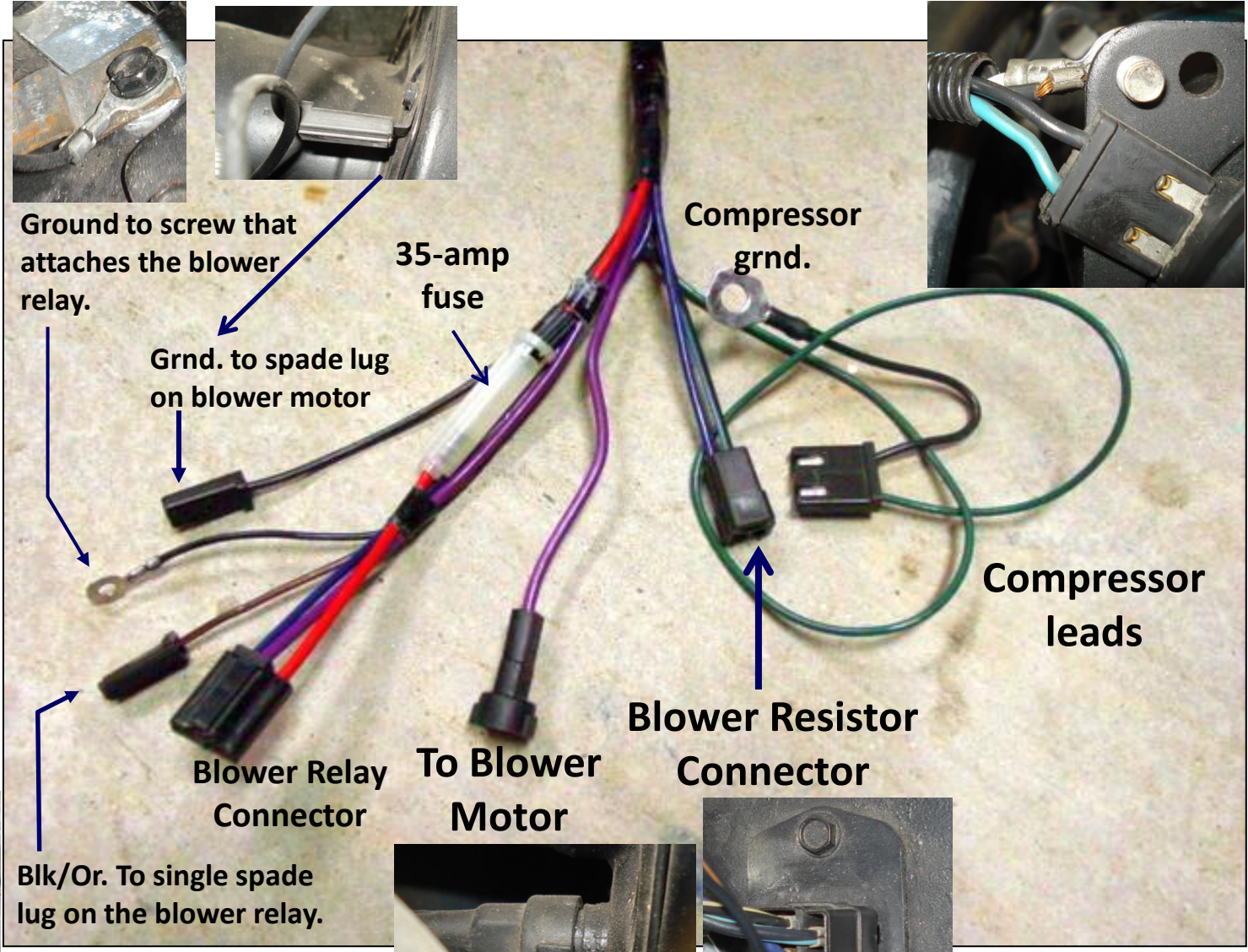
- 1
- 2
- 3
- 4

65 AIM
U69 A6

Engine harness connections to heater/AC blower motor, blower resistor and blower relay. 1965 AC Coupe



Starter connectors from engine harness



21 9419320 SCREW

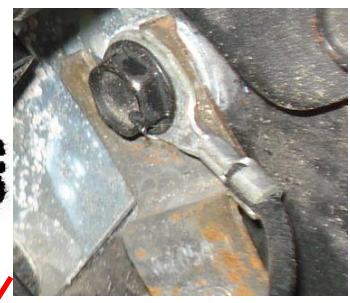
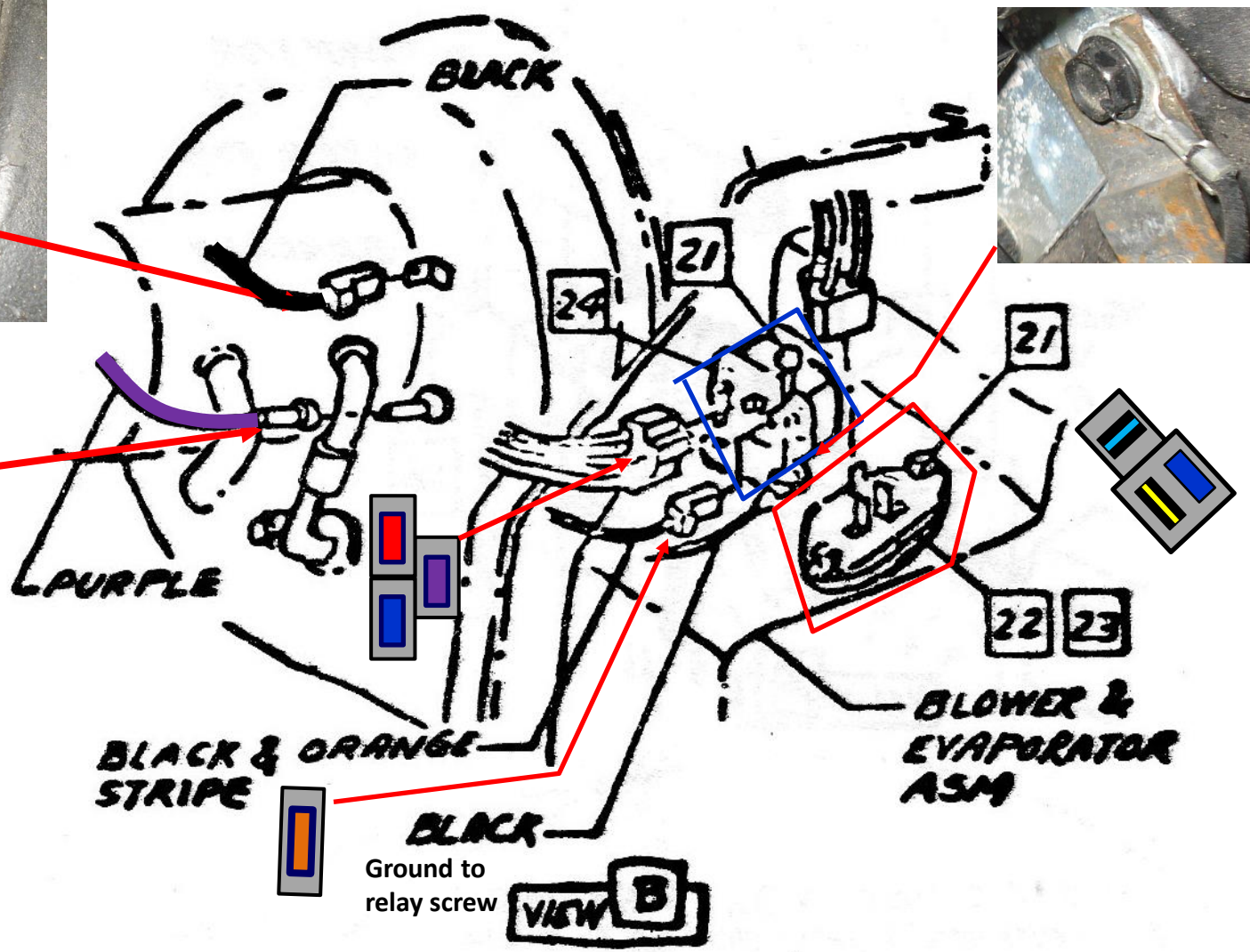
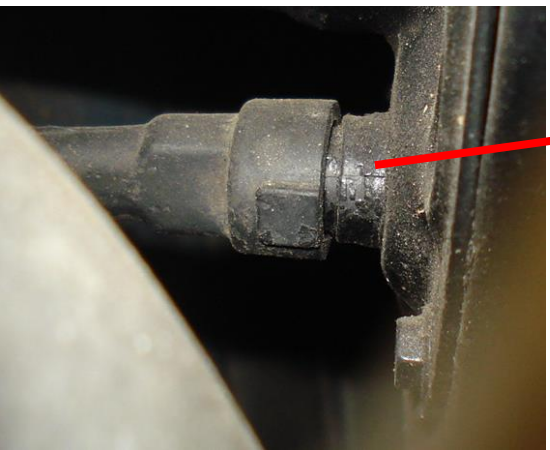
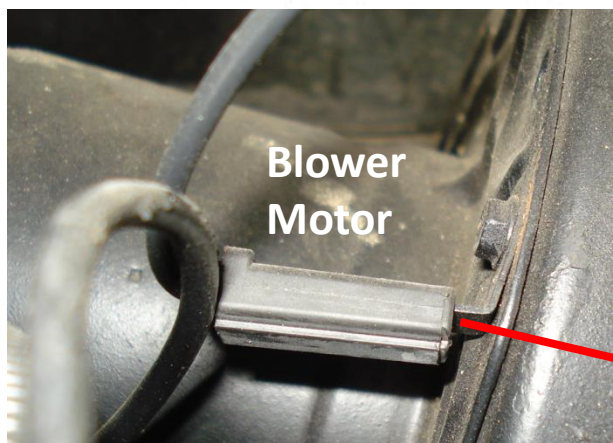
22 384316B RESISTOR ASM

23 3866444 GASKET

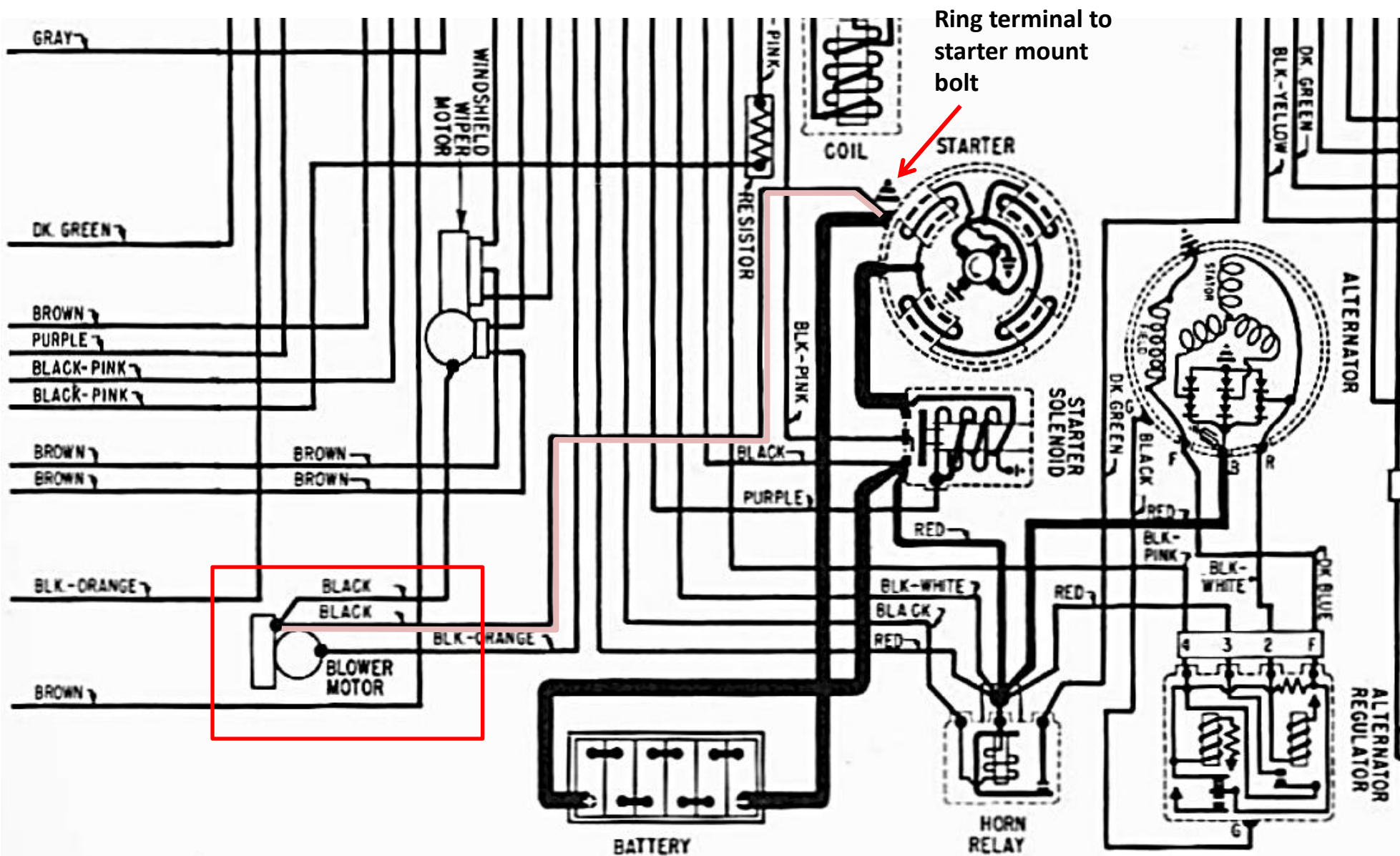
24 1116992 RELAY ASM

25 2985549 WIRE ASM-COMPRESSOR GRD

26 3711175 CEMENT-.51 OZS PER JOB.
PROD. V. REG. MOUNTING
HOLES 3 PLACES



1965 AIM C60 Sht E3



Ground connection between starter and AC blower motor is shadowed with the rose-colored line.

AC Wiring 1964, 1965

Olson Engineering

