

LIGHTING

DARE TO COMPARE

Harley-Davidson® LED Headlamps offer low- and high-beam performance that is superior to traditional halogen bulbs. The wide curb-to-curb low-beam pattern provides a great around-town view and the projector high-beam adds extra punch down the center of the lane.

LED performance characteristics you can see:

- 1 Clarity and direction of beam
- 2 Brightness and depth of light
- 3 Focused or wasted light
- 4 Full coverage or gaps in light
- 5 Curb-to-curb coverage
- 6 Illumination of reflective markings

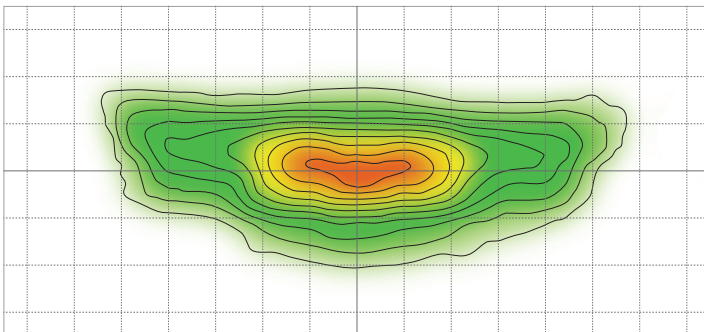
ORIGINAL EQUIPMENT HALOGEN 7" HEADLAMP – HIGH-BEAM



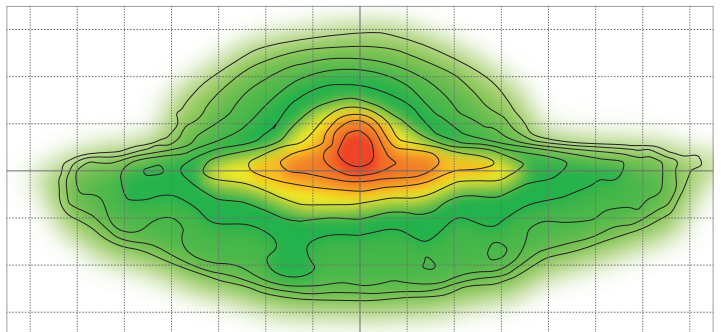
LED 7" HEADLAMP – HIGH-BEAM



*Image exposure settings are identical, taken from the same distance, at the same time and with identical motorcycles. While the eye and the camera see different things, the photographic results are comparable.



OE HEADLAMP HIGH BEAM *Riders Eye View*



LED HEADLAMP HIGH BEAM *Riders Eye View*