

Relining the Rear Window Channels – '56-'62 Rich Mozzetta & Dave Zuberer

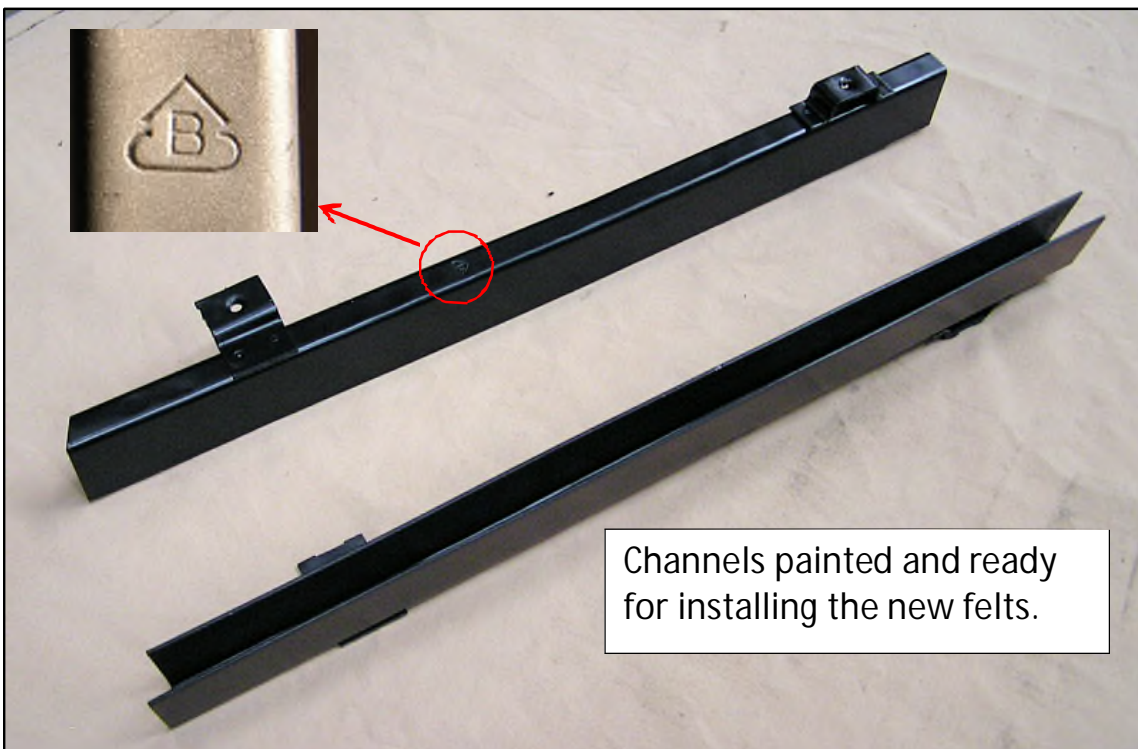


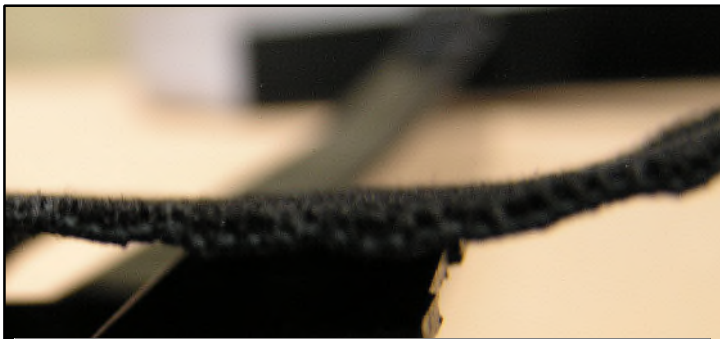
Materials:

- Refinished window channel
- Felt material purchased at local fabric stores
- Wax paper
- 3M Trim adhesive
- Piece of plywood to fit into the lined channel

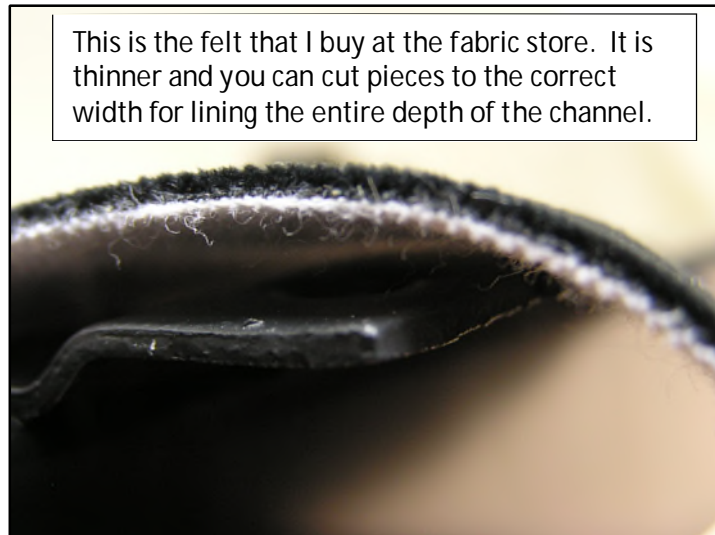
Previously, I detailed how to replace the side-window fuzzies on '56-'62 Corvettes. Here I outline the steps in replacing the felts in the rear window channel runs. Once the channels have been blasted to clean them up they are painted and then ready for the application of the new felt material.

I use fabric obtained from the local fabric store (JoAnn's fabrics or other outlet).

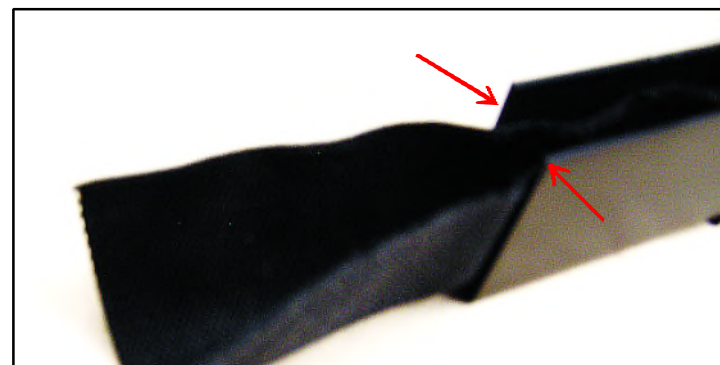




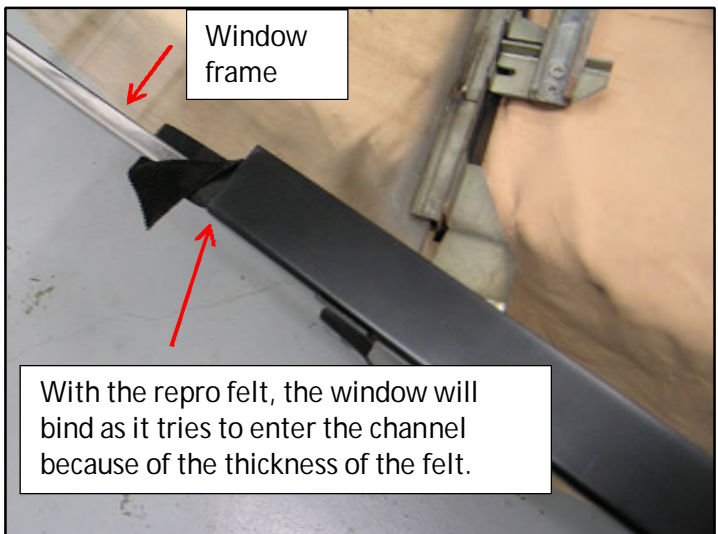
This is the reproduction felt. It is too thick and also not wide enough to line the full depth of the channel. The thickness makes it difficult to get the window frame into the channel and it binds the window. See photos below.



This is the felt that I buy at the fabric store. It is thinner and you can cut pieces to the correct width for lining the entire depth of the channel.



This is the repro felt. Note how it does not come up to the edges of the channel. The packages say it is for 1956 to 1967 cars. It will only work for 1963 to 1967 as those rear channels are narrower than the 1956 to 1962 channels.



Window frame

With the repro felt, the window will bind as it tries to enter the channel because of the thickness of the felt.



Using the fabric-store felt, the window glides easily up and down the length of the channel.



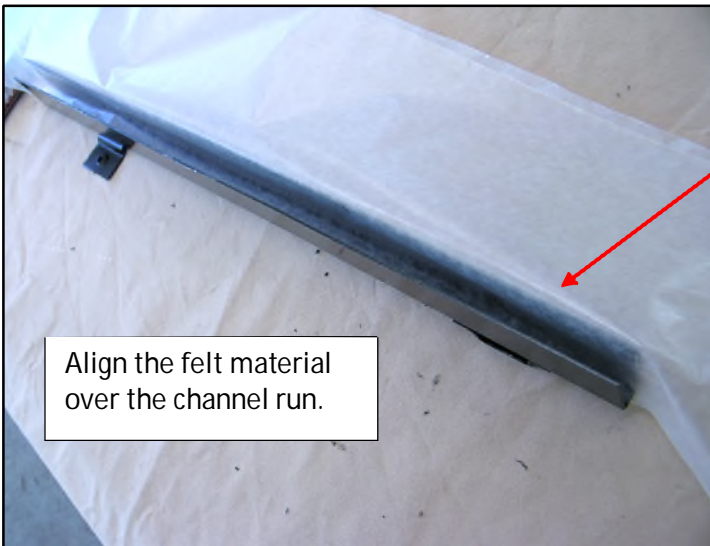
Leave 1" - 1.25" of felt protruding beyond the end of the channel.

Cut a strip of the felt material long enough and wide enough (about 4" wide) to line the channel. Leave about 1" to 1.25" of material at the end of the channel with the side bracket. This will be folded over the channel end when the liner is glued in place (see photos below).

I use the 3M General trim Adhesive



Apply adhesive to the back of the felt material. I spray glue just 2/3 of the felt backing. Use a piece of wax paper to cover the top 1/3 of the fabric. This keeps the fabric dry so it can be handled easier.



Align the felt material over the channel run.

After the glue is applied inside the entire channel, the trick is to place the wax paper into the channel down to the bottom flat area and up the opposite side of where the felt is applied (see the photo sequence below). This prevents the fabric from sticking while attaching to the primary side. Use the screwdriver to get the fabric down to the corner. After one side is attached, pull the wax paper out a bit so the bottom of the channel felt can be pressed on. Use a screwdriver to get it flat at the bottom and starting up the remaining side. Then spray glue on the remaining fabric (the 1/3 area not glued earlier; photo above), wait a minute for glue to get tacky, then slowly pull the wax paper out and up while pressing the fabric on to the remaining channel side.



Press the felt into the channel run using a screw driver of appropriate thickness.

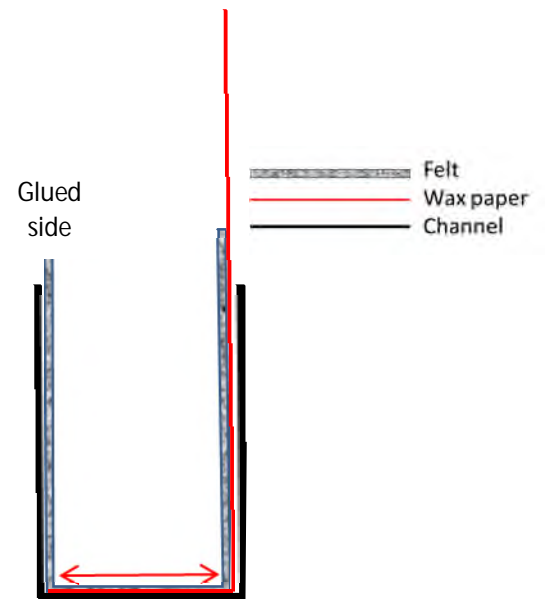


Using a block of wood or a properly sized tool, press the fabric over the entire inside of the channel trying to keep the corners square and tight.

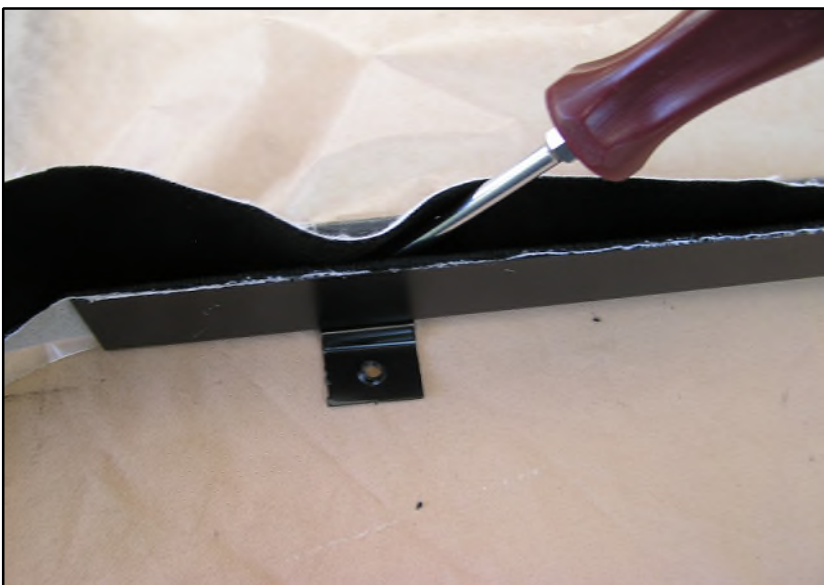
Here is the sequence for gluing the felt into the channel:



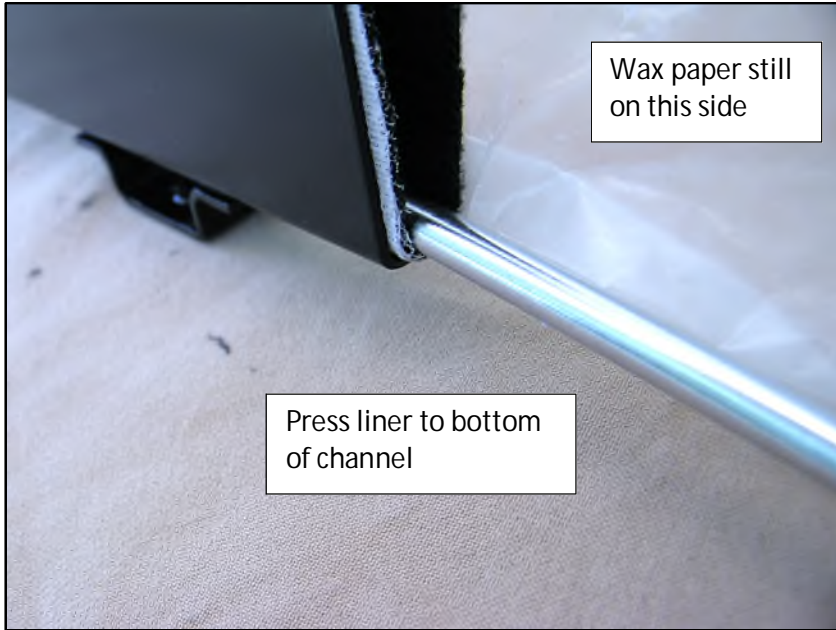
Wax paper down at the bottom



Start the felt from the glued channel side (no wax paper side) and flatten it down inside the channel.



Work the paper out a bit and get the felt stuck and flattened down at the bottom of the channel.



Here the wax paper has been lifted out a bit and the felt is applied to the bottom and flattened with the tool. Tuck it in on the opposite bottom corner. Wax paper is still on the side.



Then spray glue on the unglued felt, then pull up wax paper a little at a time and tuck and flatten the remaining felt along the 2nd side. Cover the exposed felt with a piece of paper or cardboard so you don't get glue on it. Use the "L" setting on the glue can for a narrow spray.

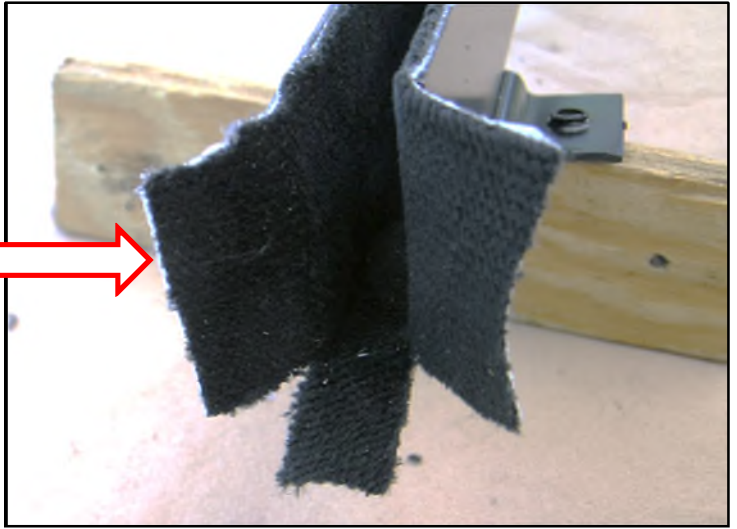


All glued up ready for trimming

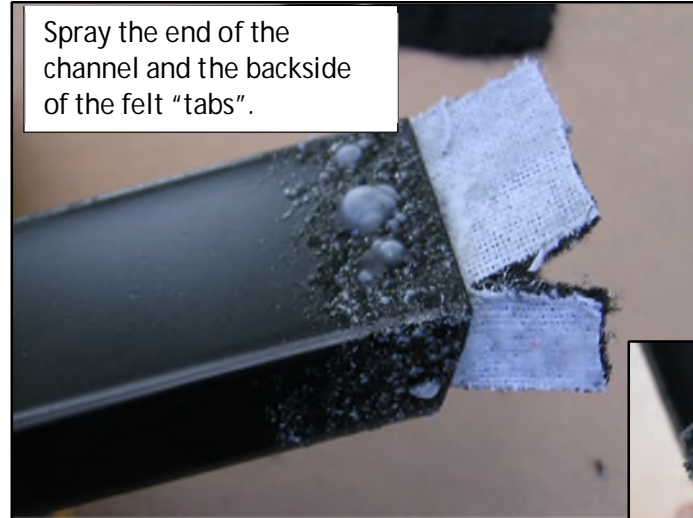
Trim the excess felt material from the edges of the channel run.



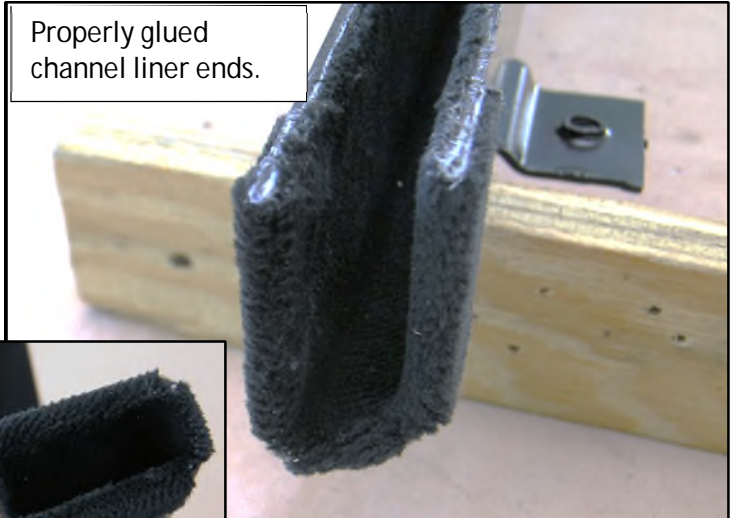
Cut felt so it can be folded back around the end of the channel.



Spray the end of the channel and the backside of the felt "tabs".



Properly glued channel liner ends.



Finished, newly lined window channels:

