



**A Completely Assembled
Direct-Bolt Knockoff
Style Wheel**

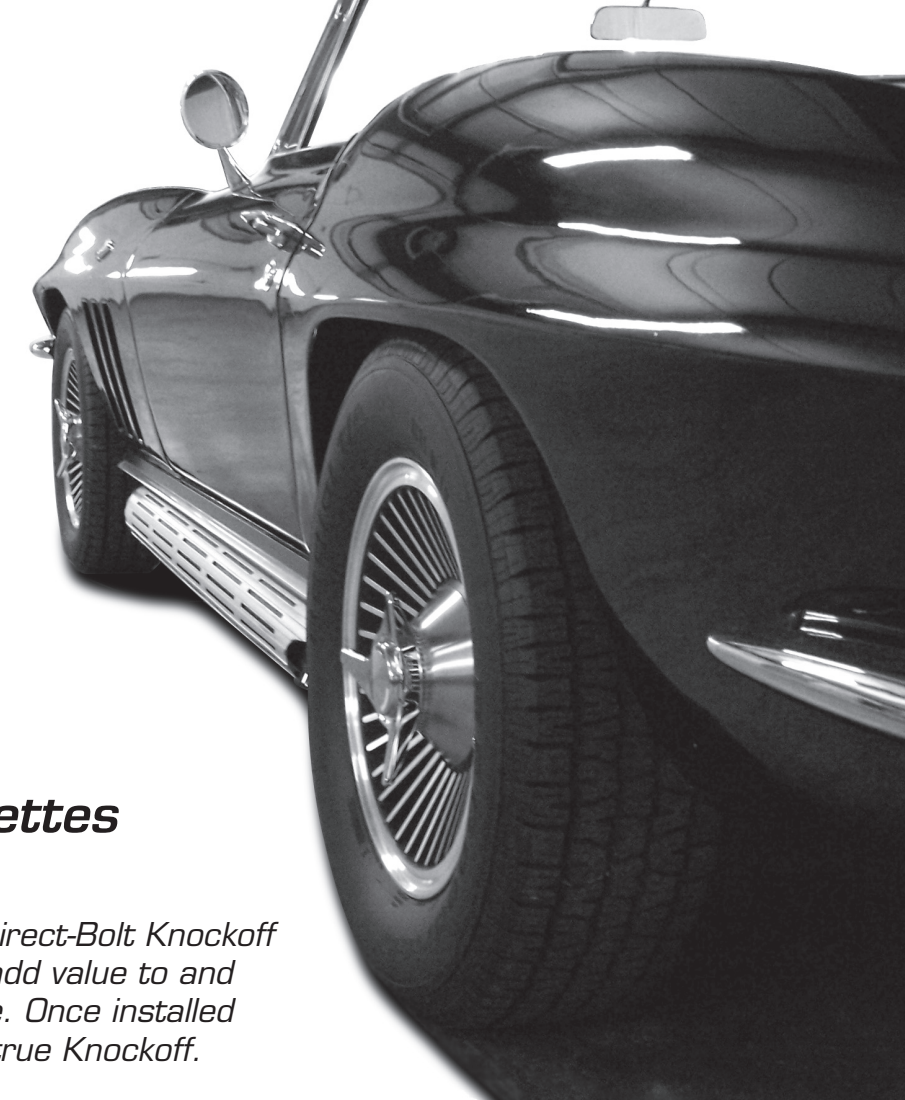


**Direct-Bolt
Knockoff Style
Wheels**

To Fit 1963-1966 Corvettes

Congratulations!

Your decision to install a set of beautiful Direct-Bolt Knockoff Style Wheels from Corvette America will add value to and enhance the looks of your classic Corvette. Once installed they are virtually indistinguishable from a true Knockoff.



**Corvette America is a division of
Auto Accessories of America.**

**Corvette is a registered trademark of
General Motors Corporation.**

Auto Accessories of America, Inc. Policy:

30 Day Limited Warranty — All products are warranted to be free of defects in workmanship and materials for a period of 30 days from invoice shipment date. Auto Accessories of America, Inc. cannot ensure that these directions will be followed completely and/or correctly. Therefore, THE OBLIGATION OF AUTO ACCESSORIES OF AMERICA, INC., WARRANTOR, IS LIMITED TO REPLACEMENT OF DEFECTIVE MERCHANDISE ONLY. THERE ARE NO OTHER WARRANTIES, EITHER EXPRESSED OR IMPLIED. WARRANTOR SHALL NOT BE LIABLE FOR ANY INCIDENTAL OR CONSEQUENTIAL DAMAGES INCLUDING, BUT NOT NECESSARILY LIMITED TO, LOSSES CAUSED BY DELAY IN THE INSTALLATION OF WARRANTOR'S PRODUCTS, OR FOR THE TRANSPORTATION OR ANY OTHER CHARGE INCURRED IN THE REPAIR OR REPLACEMENT OF A DEFECTIVE ITEM, OR REMOVAL OR USE OF THIS MERCHANDISE.

ALT REV. 7/09



Note / Notice



Tools Required



Item Checklist

Important Notice!

These instructions must be read, understood and followed when installing your Direct-Bolt Knockoff Style Wheels. Failure to follow these instructions could result in improper installation leading to vehicle damage and/or bodily injury.

The following additional items will be necessary to install your wheel set:

- | | |
|---------------|-------------------------------|
| 1. Jack | 3. Jack Stands |
| 2. Lug Wrench | 4. 7/16" Socket or Nut Driver |

1

Inspect your wheel set for the correct assortment of parts. Your set should contain the following:

- (4) Direct-Bolt Knockoff Style Aluminum Wheels
- (2) Left Hand Spinners • (2) Right Hand Spinners
- (20) 7/16" Hex Head Bolts with Lockwashers
- (4) Cones • (4) Center Caps • (4) Anti-Theft Pins
- (20) Lugnuts • (2) Left Hand Adapters • (2) Right Hand Adapters

2 Have your tires installed on the wheels and have the wheel/tire assemblies properly balanced prior to installation. An unbalanced or improperly balanced wheel/tire assembly can cause excessive vibration and contribute to excessive wear and possible loosening of the spinner. Take your wheels to a reputable dealer for tire installation. These wheels represent a considerable investment in your automobile and can be easily marred by someone not familiar with aluminum wheels.

3 Jack up your car according to the manufacturer's instructions. Use jack stands to support the vehicle. Never work under a vehicle that is supported only by a jack. Remove your existing wheels.

4 The mating surfaces of the back of the wheel and the face of the brake drum or rotor must be clean and free of any dirt, grease or other debris. Clean the surfaces with a wire brush if necessary. Also, the brake drums or rotors must be flat to seat flush with the wheel. Bent, warped or damaged drums or rotors should be replaced before installing your Direct-Bolt Knockoff Style Wheels.

5 Install a Direct Bolt Knockoff Style Wheel on each drum or rotor by aligning the 5 mounting studs with the holes in the wheel and pushing into position. Install a lugnut on each of the five wheel studs. Torque to 70-85 lbs. ft.



#K1034
Lugnuts - 20 pc Set

6 **Note:** There are Left Hand and Right Hand Adapters and Spinners. These **MUST** be installed on the proper sides of the vehicle or the Spinners could come loose. Left Hand and Right Hand are determined as though you are sitting in the car and facing forward.

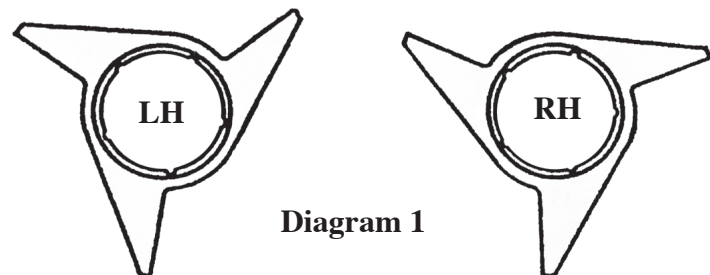


Diagram 1

Left Hand — Wings point in a counter-clockwise direction. Spinner tightens onto Adapter in a clockwise direction.
Right Hand — Wings point in a clockwise direction. Spinner tightens onto Adapter in a counter-clockwise direction.

While each piece is marked as to side, we recommend that you compare your hardware to Diagram 1 to ensure no errors were made during the stamping or machining process.

7 Install the proper side adapter on each wheel by aligning the five small holes in the adapter with the five pre-drilled and threaded mounting holes on the front center face of the wheel. The large holes provide clearance for the lugnuts. Use the provided 7/16" Hex Head Bolts and Lockwashers to securely fasten the adapters to the wheel.

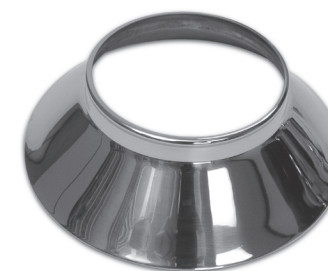


Adapter

7/16" Hex Head Bolts and Lockwashers



8 Place a Cone over the Adapter on the Wheel.



Cone



9 Thread the correct side Spinner on to the threaded part of the Adapter and tighten so that it holds the Cone in place. As you tighten the Spinner, note that there are grooves cut into the threads of both the Spinner and Adapter, a groove on the Spinner and one on the Adapter will align. If the Spinner is tightened and two grooves don't align, the Spinner must be tightened further to allow alignment. Never back off a Spinner, once tightened, to allow alignment.



Spinner



Occasionally, the grooves on a Spinner and Adapter will not align when the Spinner is tight and the Spinner would have to be tightened excessively to allow alignment of the next two holes. If this occurs, place two small beads of silicone, permatex, or any non-hardening, heat-resistant, water-resistant polymer compound for general automotive use inside the Cone. Allow material to setup before installing the Cone. This will take up a small amount of space between the Cone and Adapter and will allow the Spinner to tighten against the Cone sooner, allowing the holes to align. See Diagram 2.

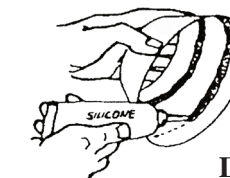
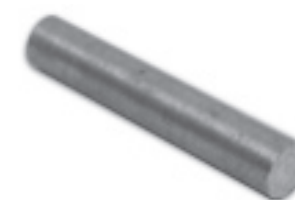
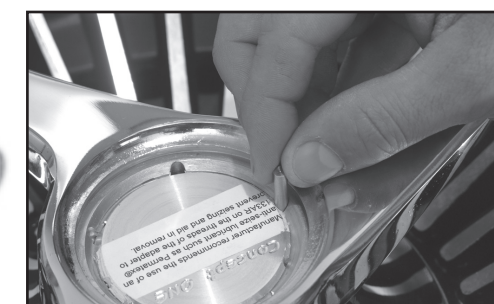


Diagram 2

10 With the Spinner tight against the Cone and two grooves aligned, insert an Anti-theft Pin into the hole formed by the two aligned grooves. Note that the Pins are tapered and the smaller end should be inserted first.



Anti-theft Pin



11 After the Anti-theft Pins are in place, install the Center Caps. Note that there are 3 tabs equally spaced around the circumference of the center cap. Place two of these tabs under the machined lip in the center opening of the Spinner, and push on the third tab with your thumb until the Center Cap snaps into place. This completes the installation of your DBKO Wheels. See back page for a photo of an assembled wheel.



Center Cap

