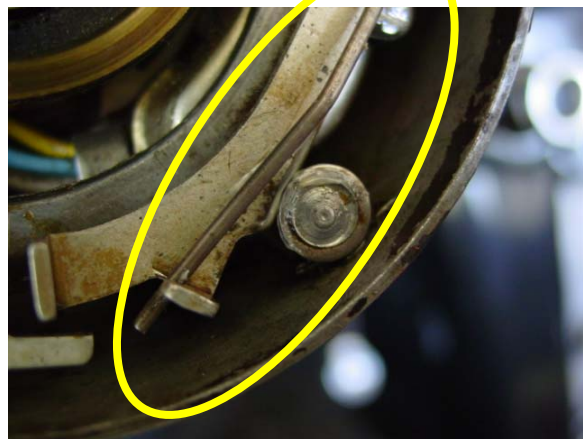
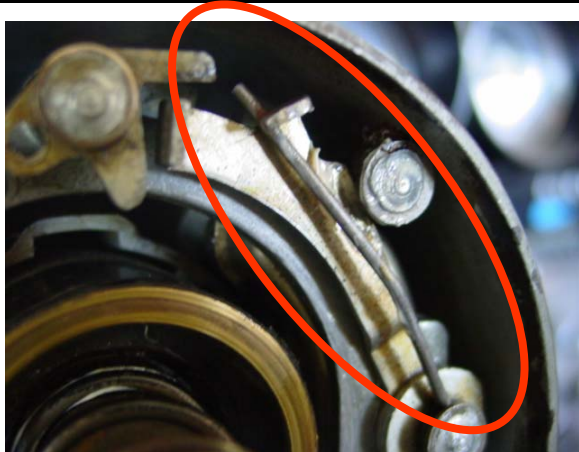
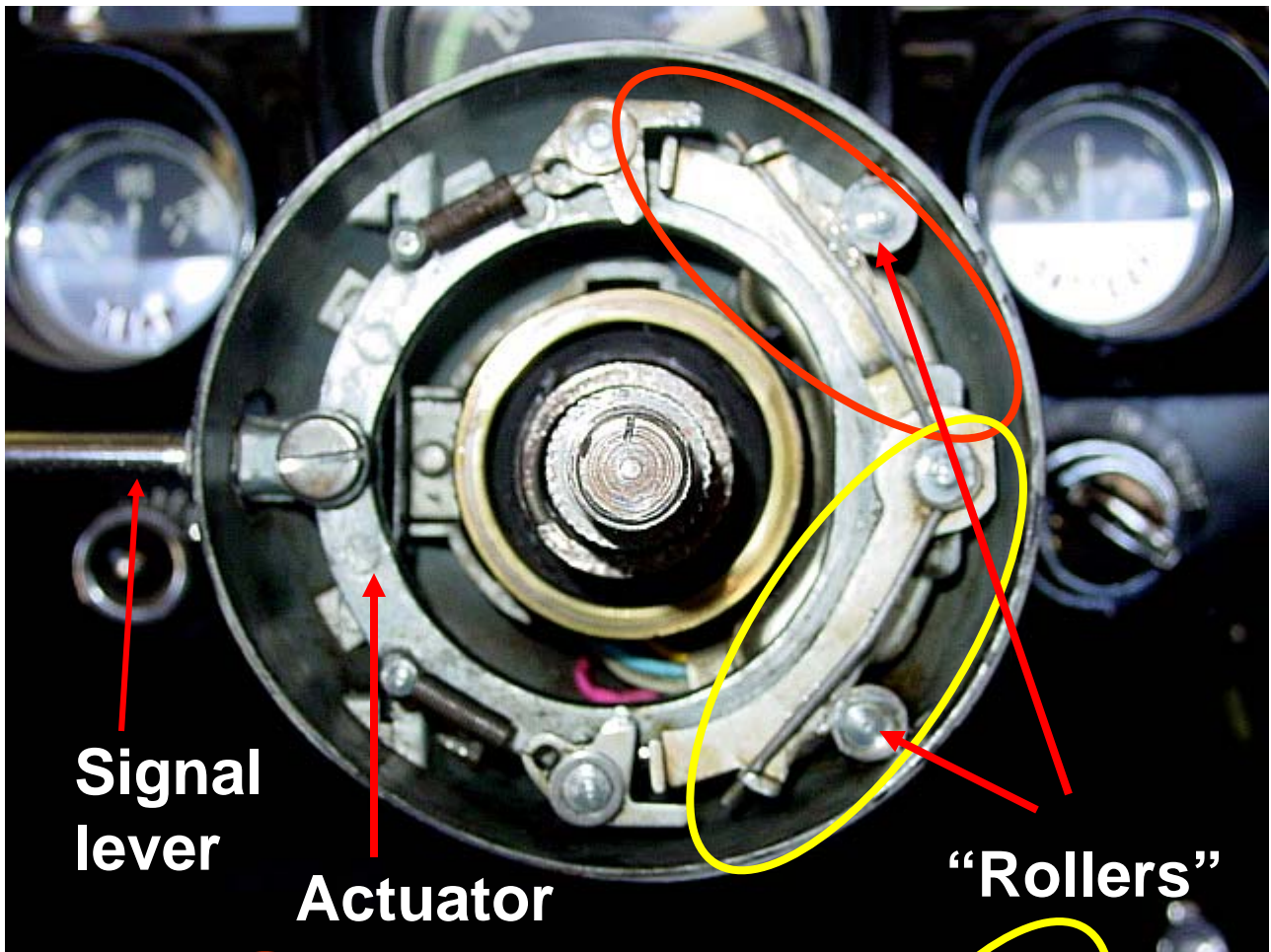


Turn signal mechanism: 1960 Corvette

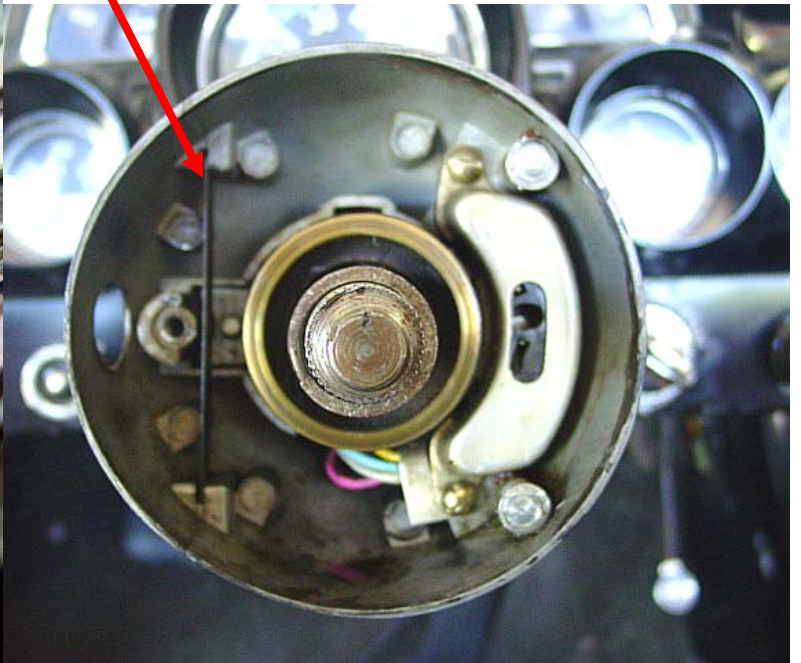
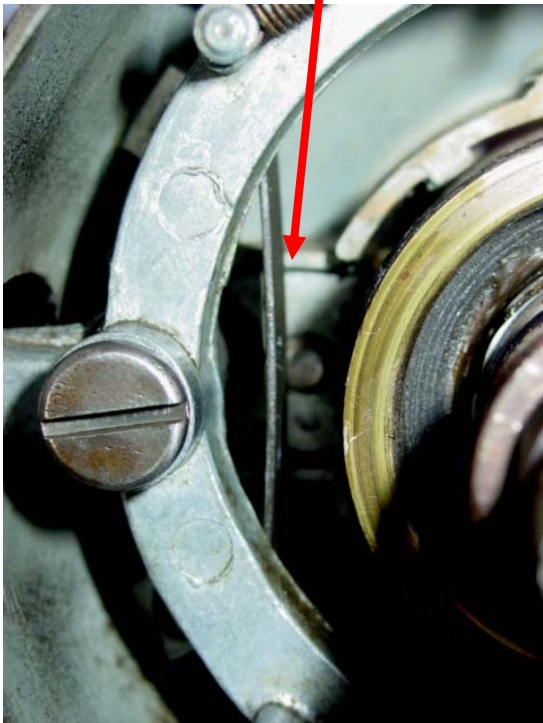
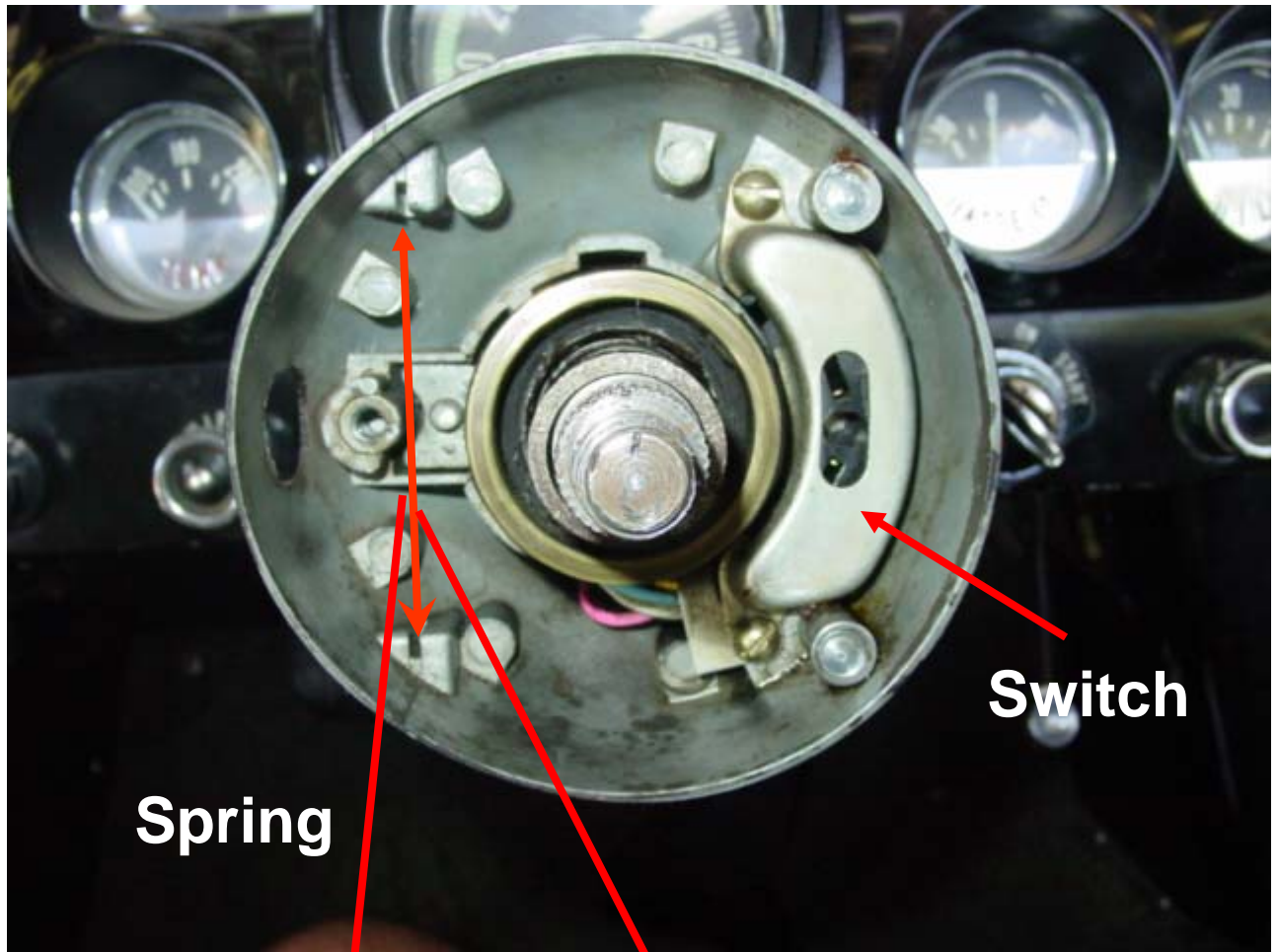
D. Zuberer



These are pics of the turn signal mechanism in my 1960. I cannot vouch for their originality; these are shown as I found them.

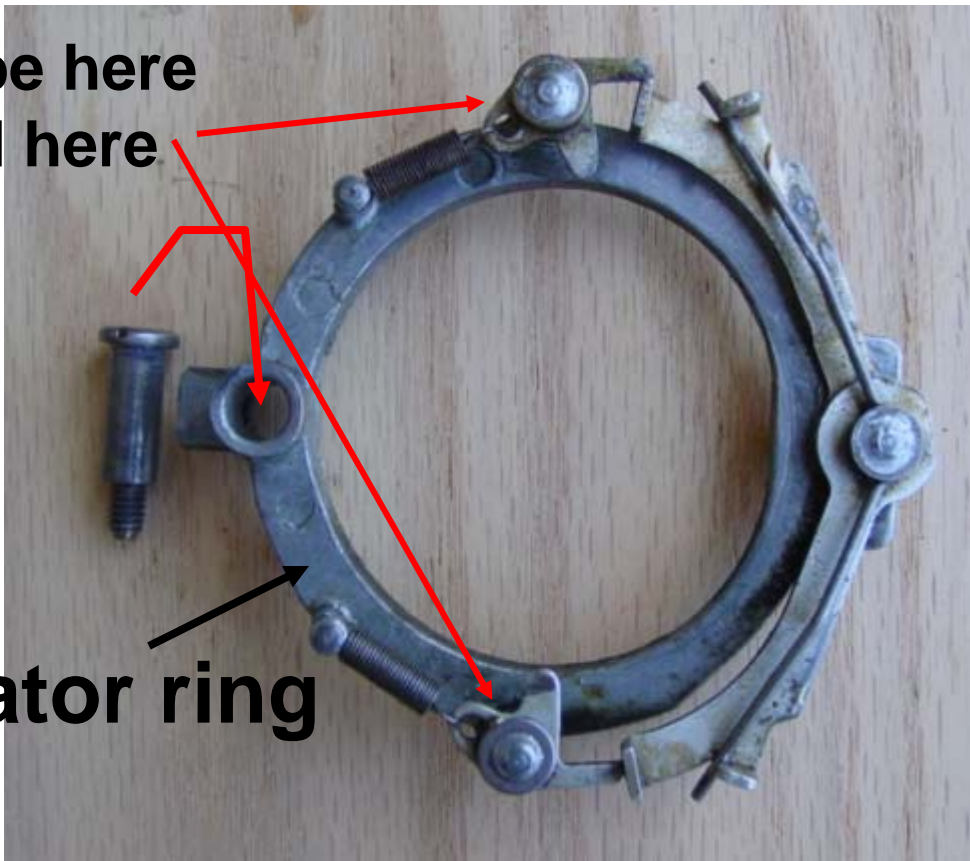


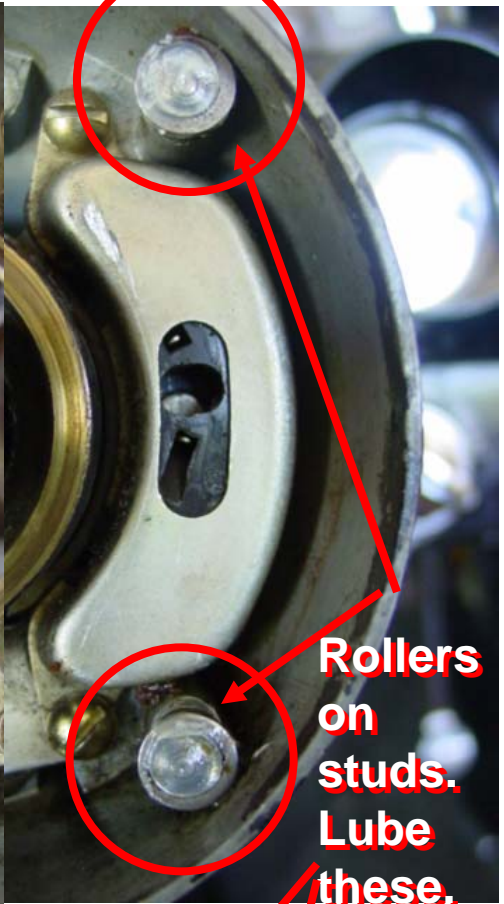
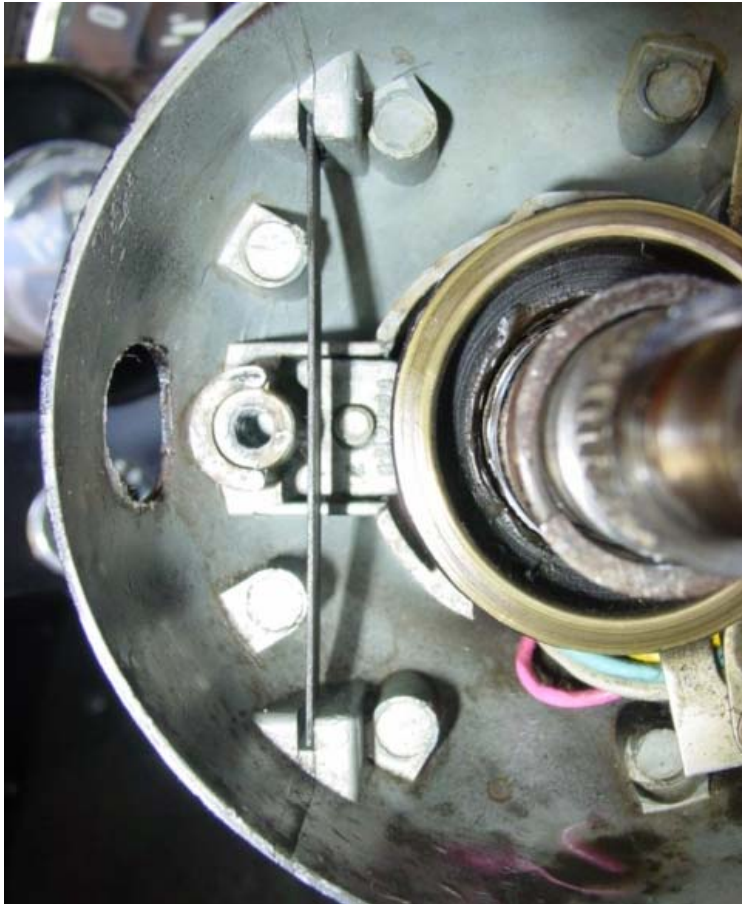
Turn signal mechanism rocks back and forth on the rollers shown above.



**Lube here
and here**

Actuator ring





**Rollers
on
studs.
Lube
these.**

