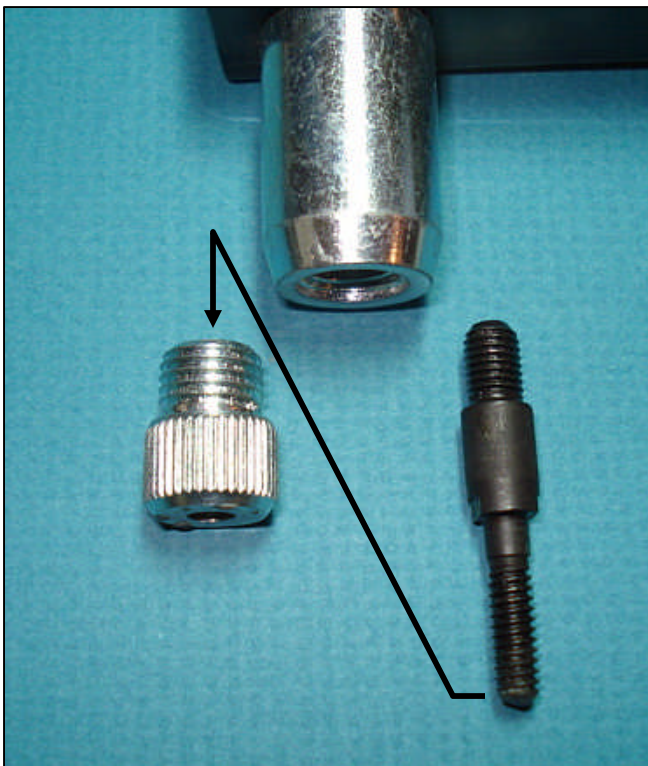
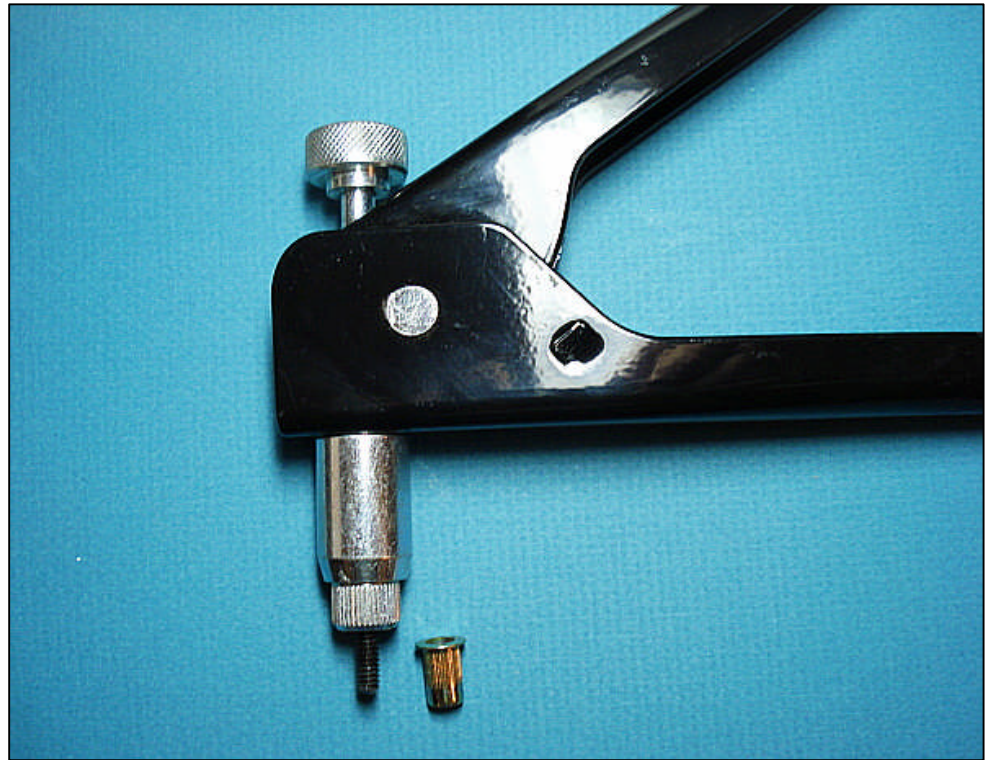
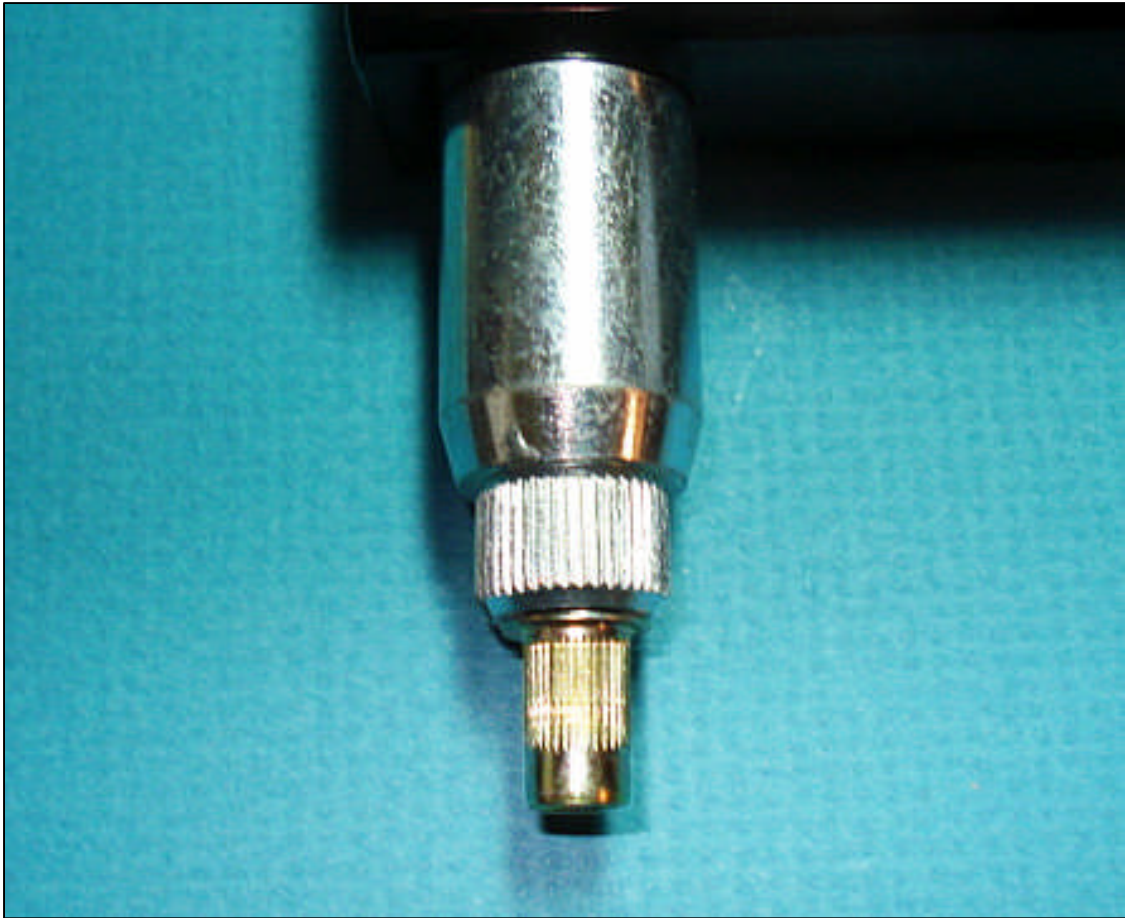


Rivet nuts (thread inserts) : one solution to stripped holes in fiberglass door panels.

Inexpensive rivet nut (thread insert) tool from Harbor Freight. Comes with mandrels (nose pieces) for 1/4"-20, 10-24, 8-32 and 6-32 inserts.

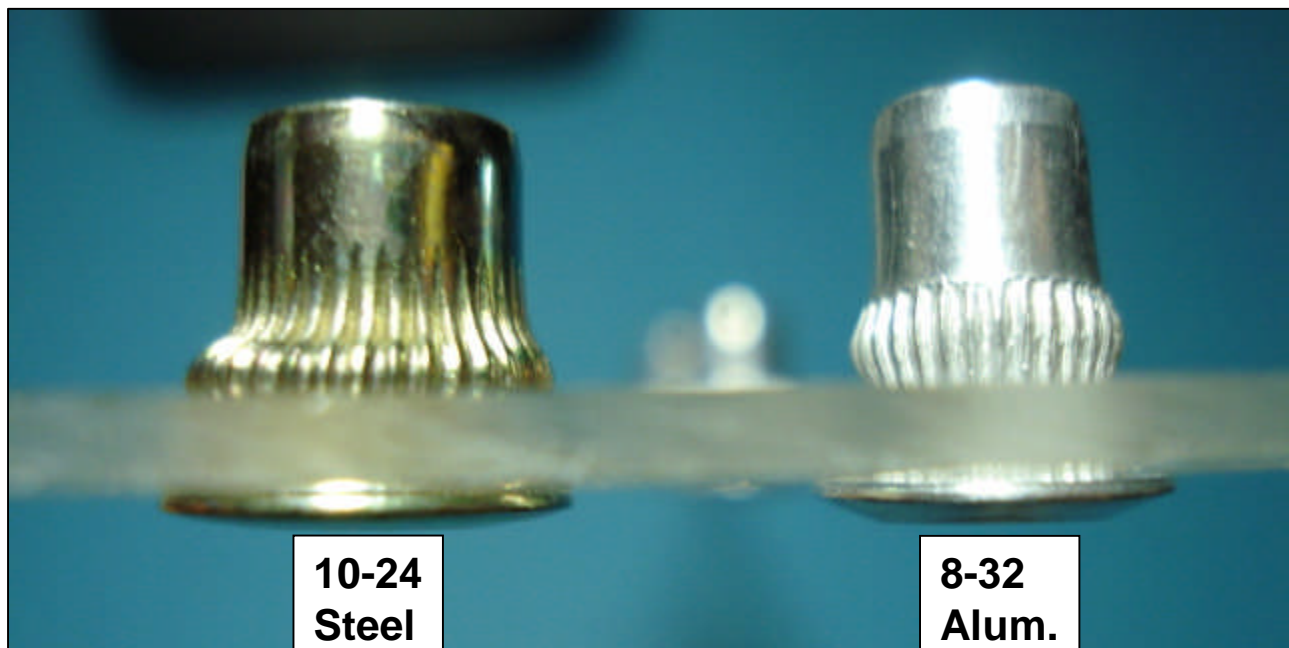




10-24 thread insert loaded and ready to install. Press the flange of the nut firmly against the panel while squeezing the handles to expand the insert.

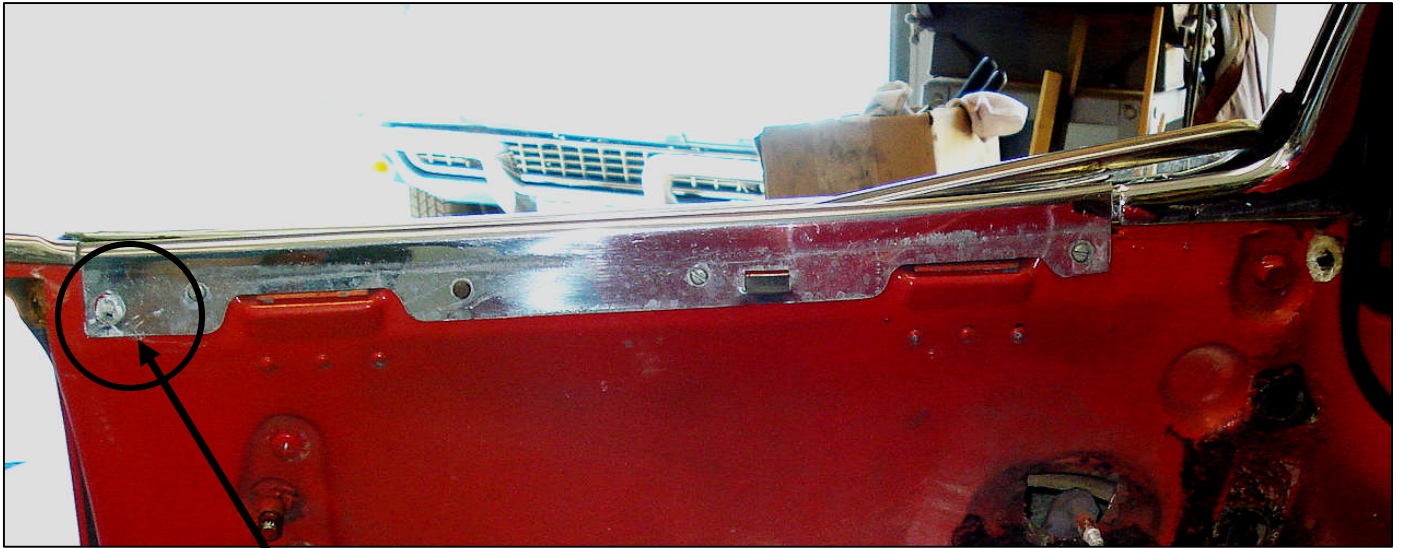
Rivet nuts: one solution to stripped holes in fiberglass door panels.

Below are two rivet nuts mounted through a thin sheet of Lexan. I used the 10-24 steel nuts to fix the stripped holes in the inner fiberglass door panel of my 1960. They grip well and will make removal and reinstallation of the panels an easy task.

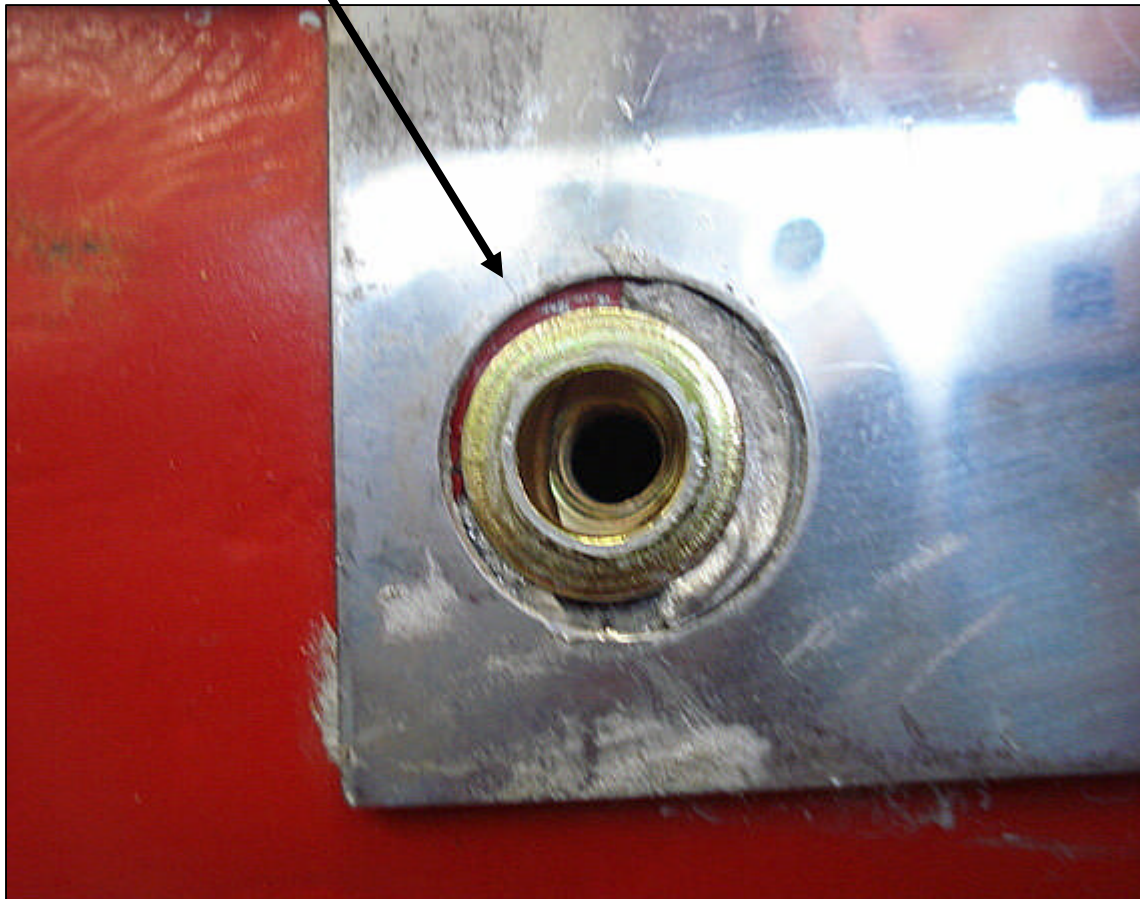


10-24 Rivet nut (steel) set in door panel





This one fits nicely in the hole of the inner molding garnish.





Here is a common problem with inner door panels. Over tightening the screws strips the holes or worse, as you see here, pulls out a piece of the panel.

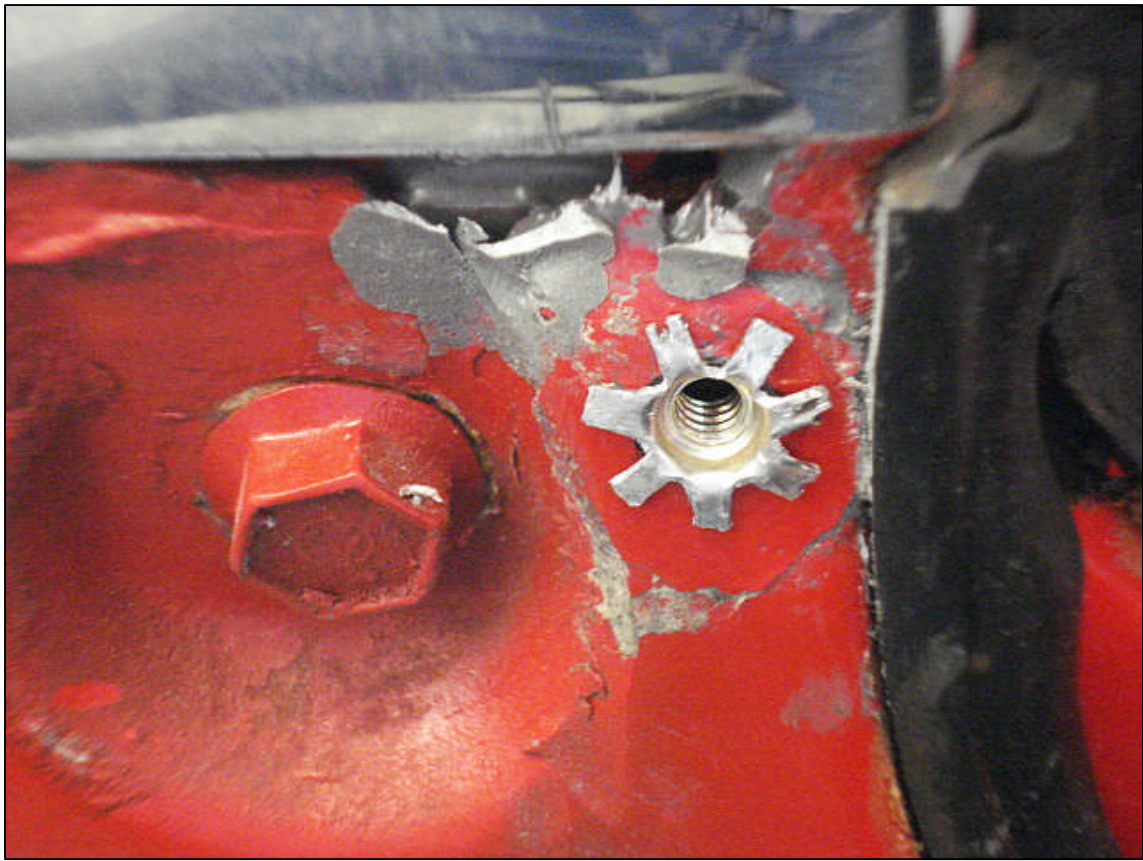


“Chip” is glued in place with JB Weld and drilled ($19/64$ ”) to accept the modified 10-24 steel rivet nut shown on the next page.

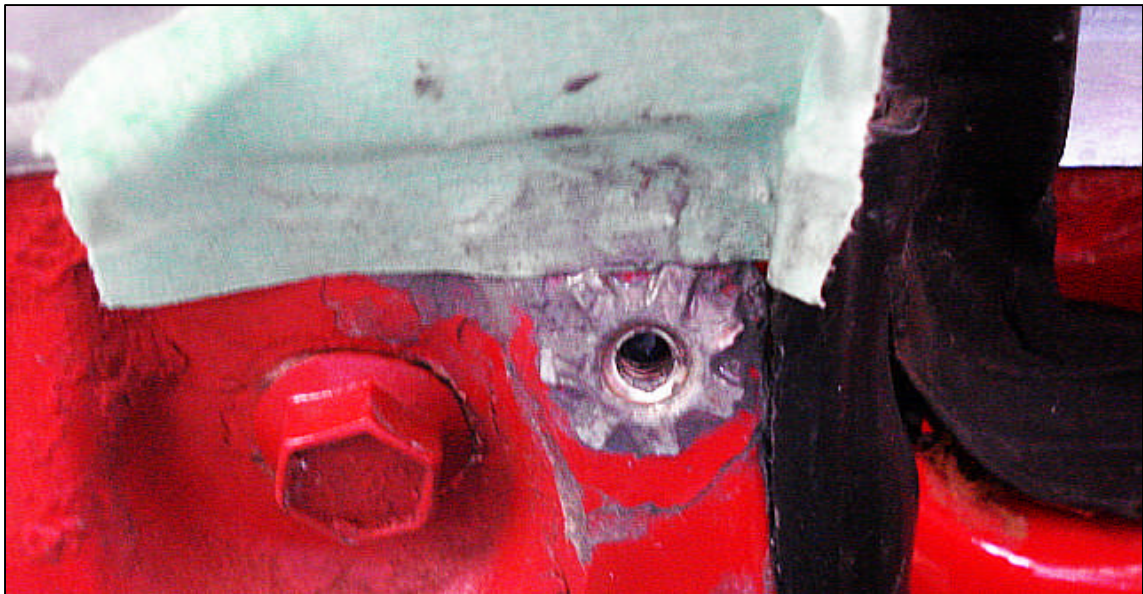


To repair the hole in the inner fiberglass door panel I modified a rivet nut by cutting off the flange and then cutting notches so that I could flare out the top of the nut. I was able to retain all the threads and some of the knurled barrel to grip the glass.

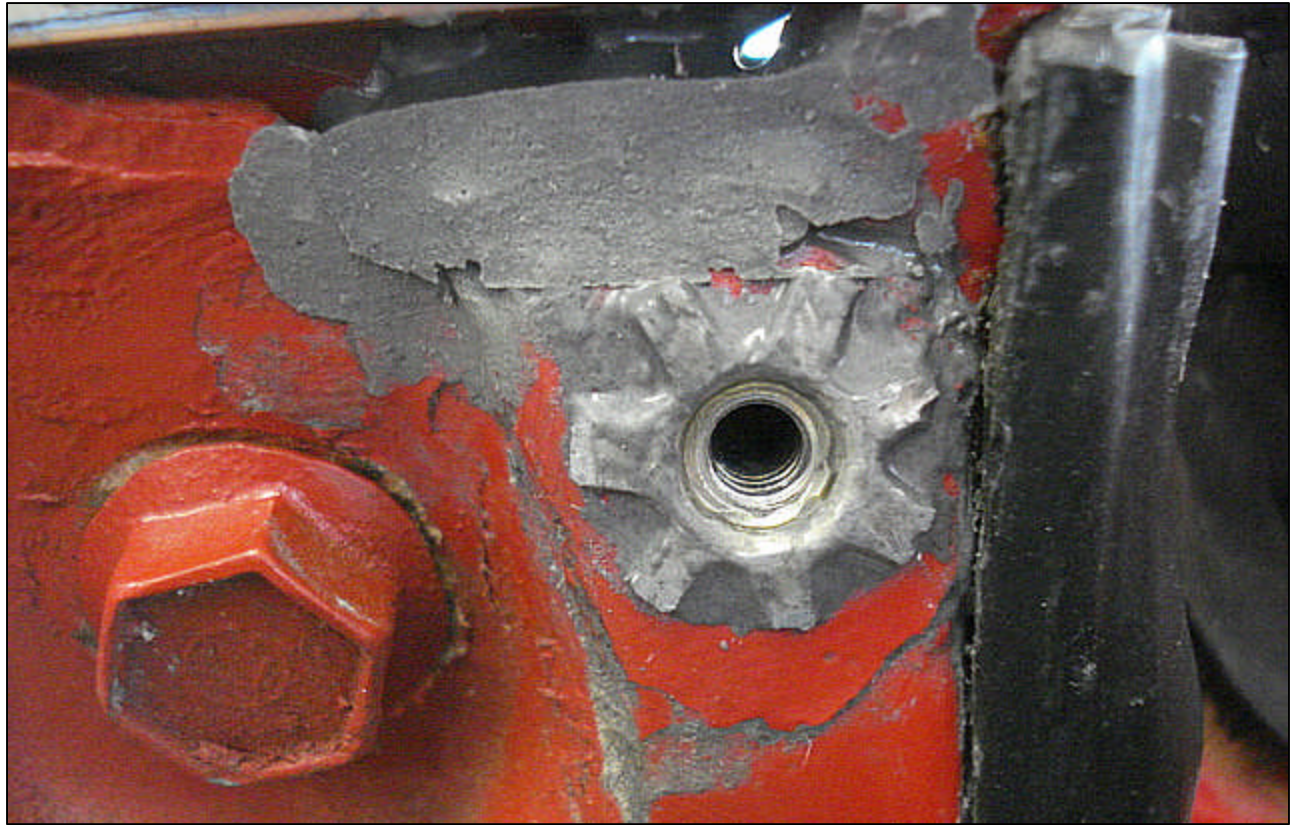
I cemented the modified nut in place as I was not able to get it to expand with the installer (next pg.).



Modified rivet nut in place for test fitting.



Nut is cemented in place. I applied cement behind the panel and on the body of the nut as it was inserted. I also inserted a screw coated with grease (not shown) to make sure the threads would stay free of cement. Tape is holding some extra cement at the top of the panel.



Here is the finished install. A little red paint and I'm hoping to get a useful long life out of this repair (and a tight fit of the door panel at the top). I'm using 10-24 Stainless oval-headed Phillips machine screws to attach the panel.