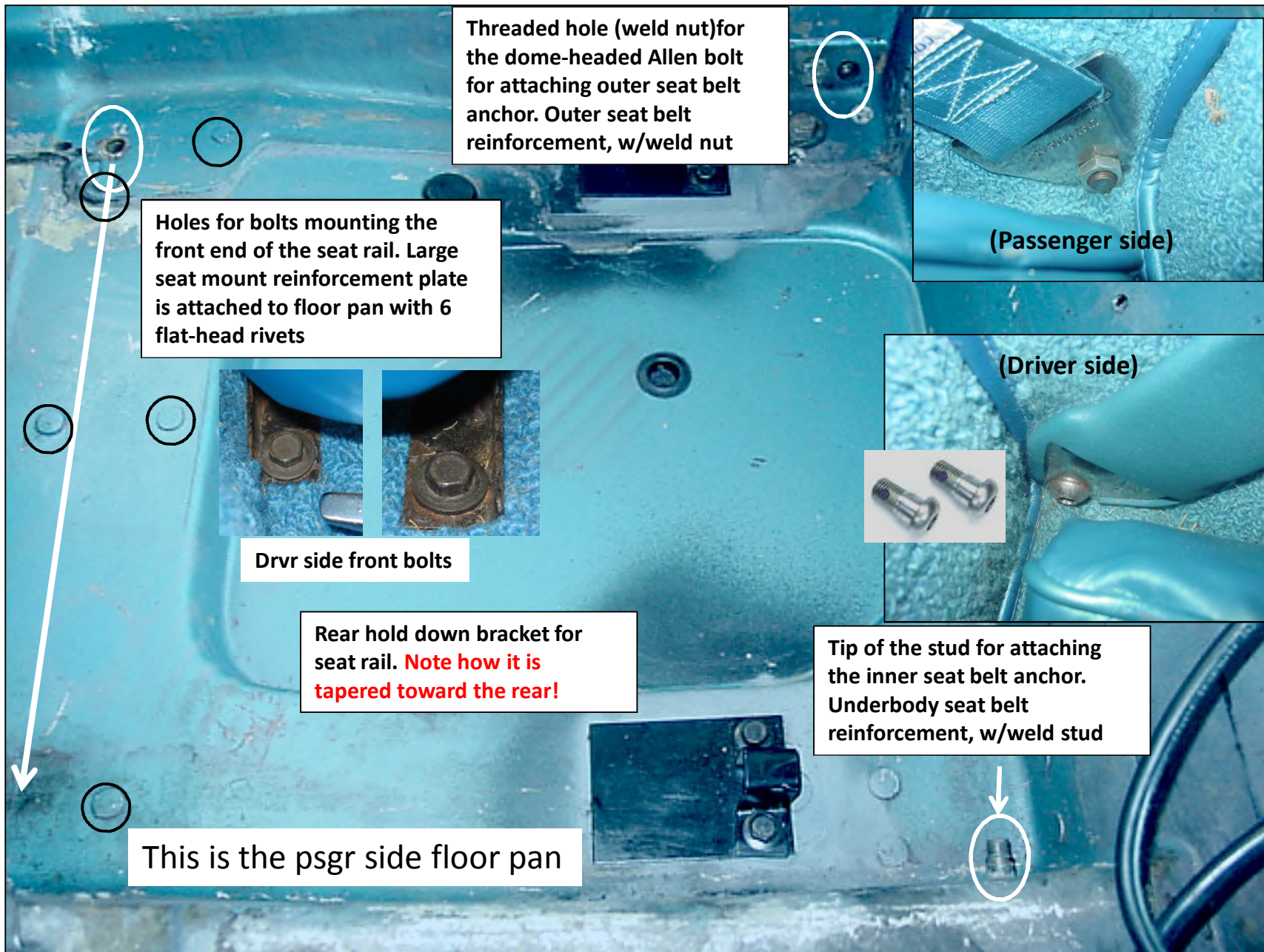


Seat and Seat Belt Mounting Hardware for a 1965 coupe

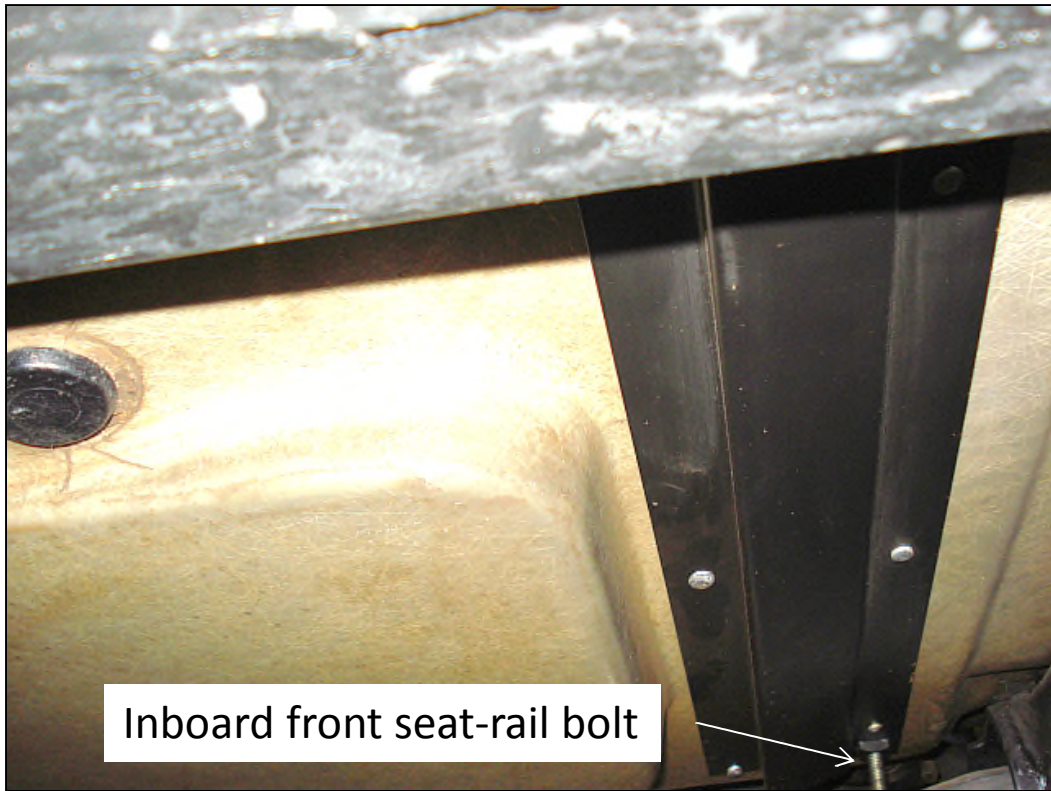


All photos are from my 65 coupe

Dave Zuberer, Oct. 2013

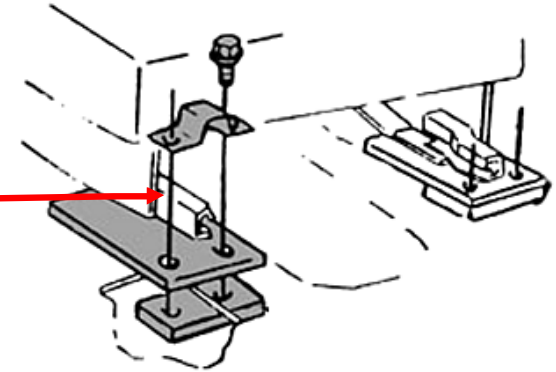
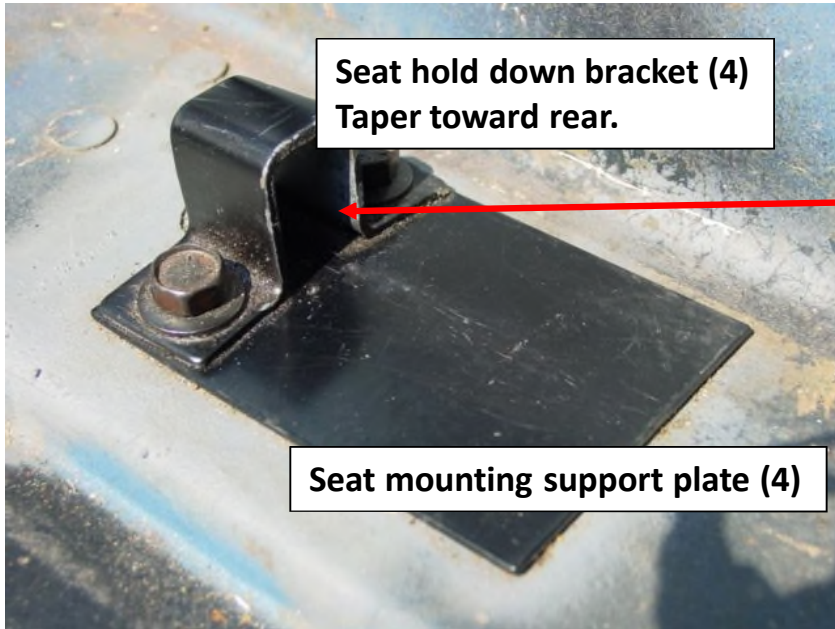


Front Seat mounting reinforcement plate (2)



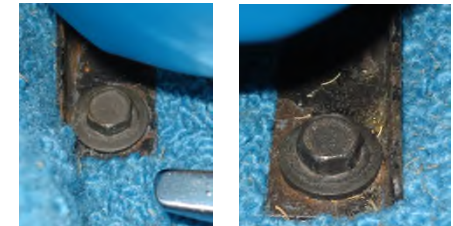
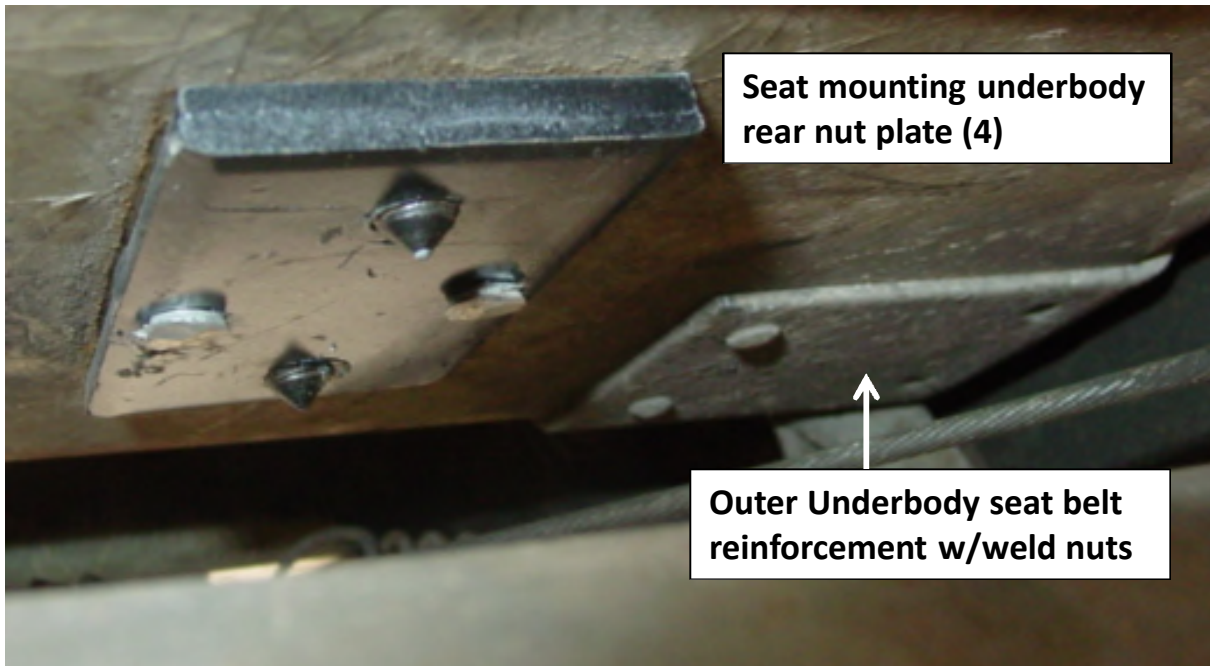
Inboard front seat-rail bolt

Passenger-side front seat mounting plate



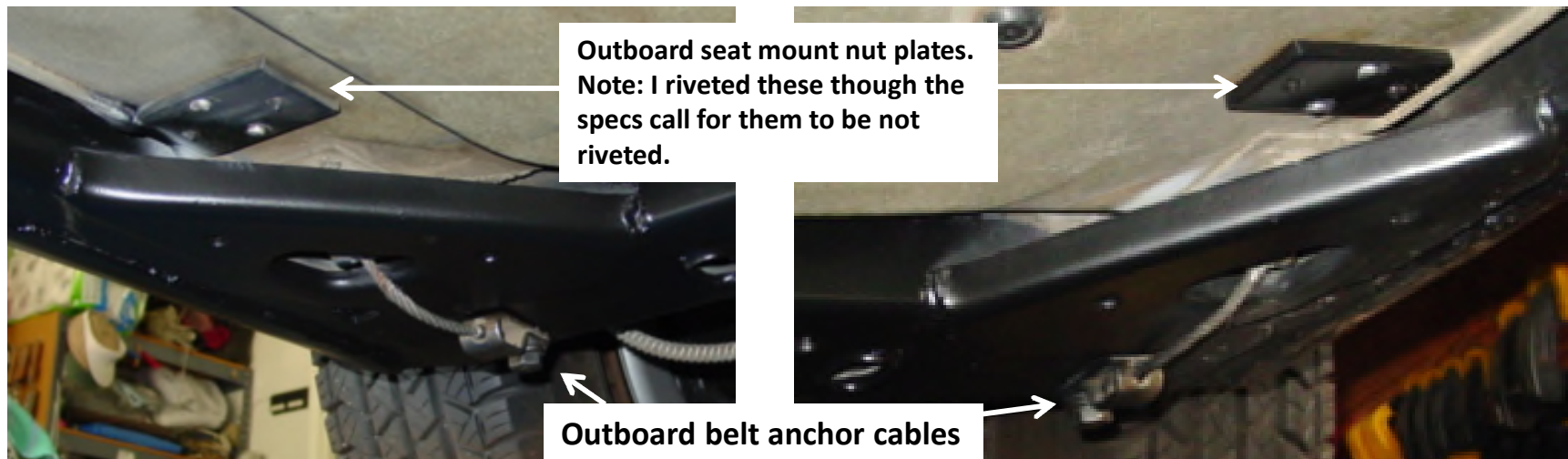
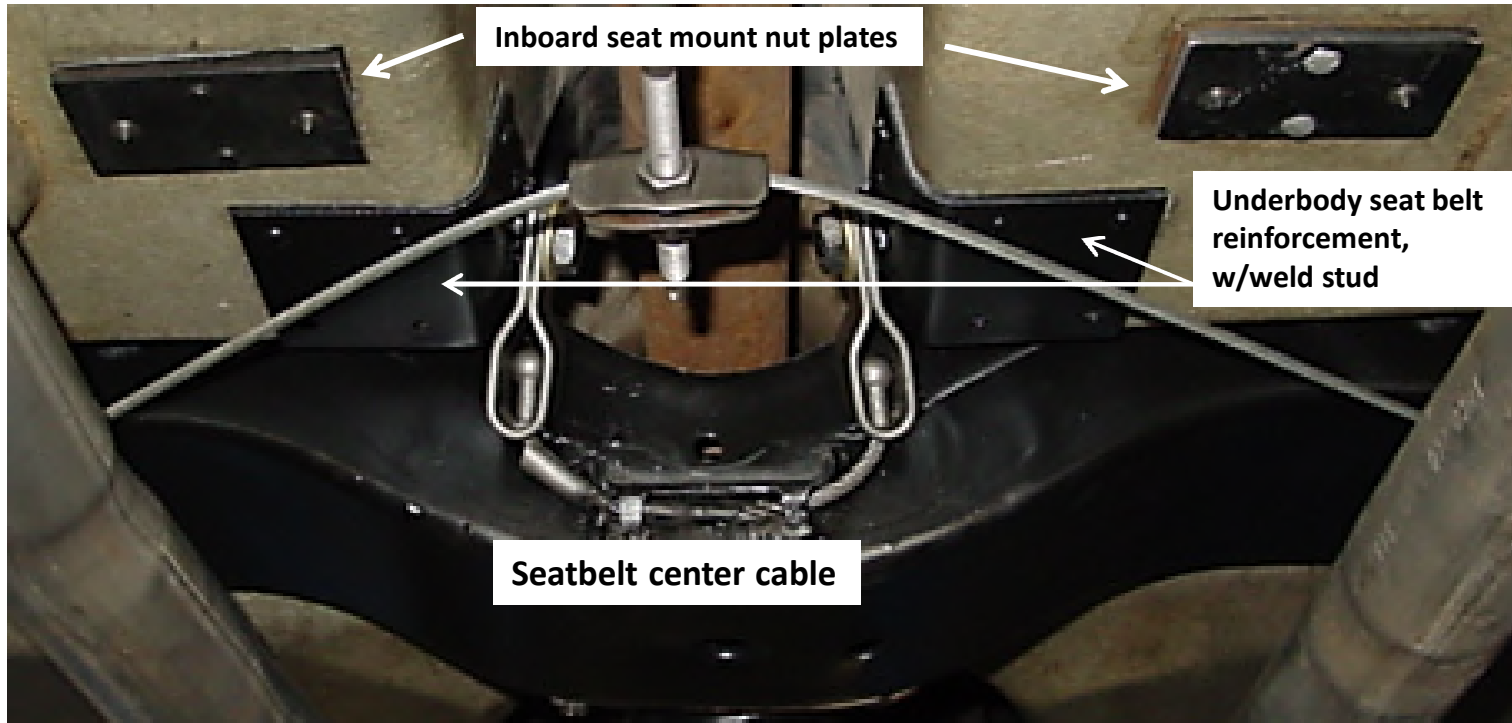
See 65 Aim Sheet J4 below

The seat tracks just slide into these rear brackets. To remove the seats just remove the two front hold down bolts, raise the seat front slightly and pull the seat assembly forward. To get the best access to the front bolts, move your seat all the way back.



Driver-side front bolts

Seat-belt-anchor cables





CHEVROLET

ASSEMBLY INSTRUCTIONS

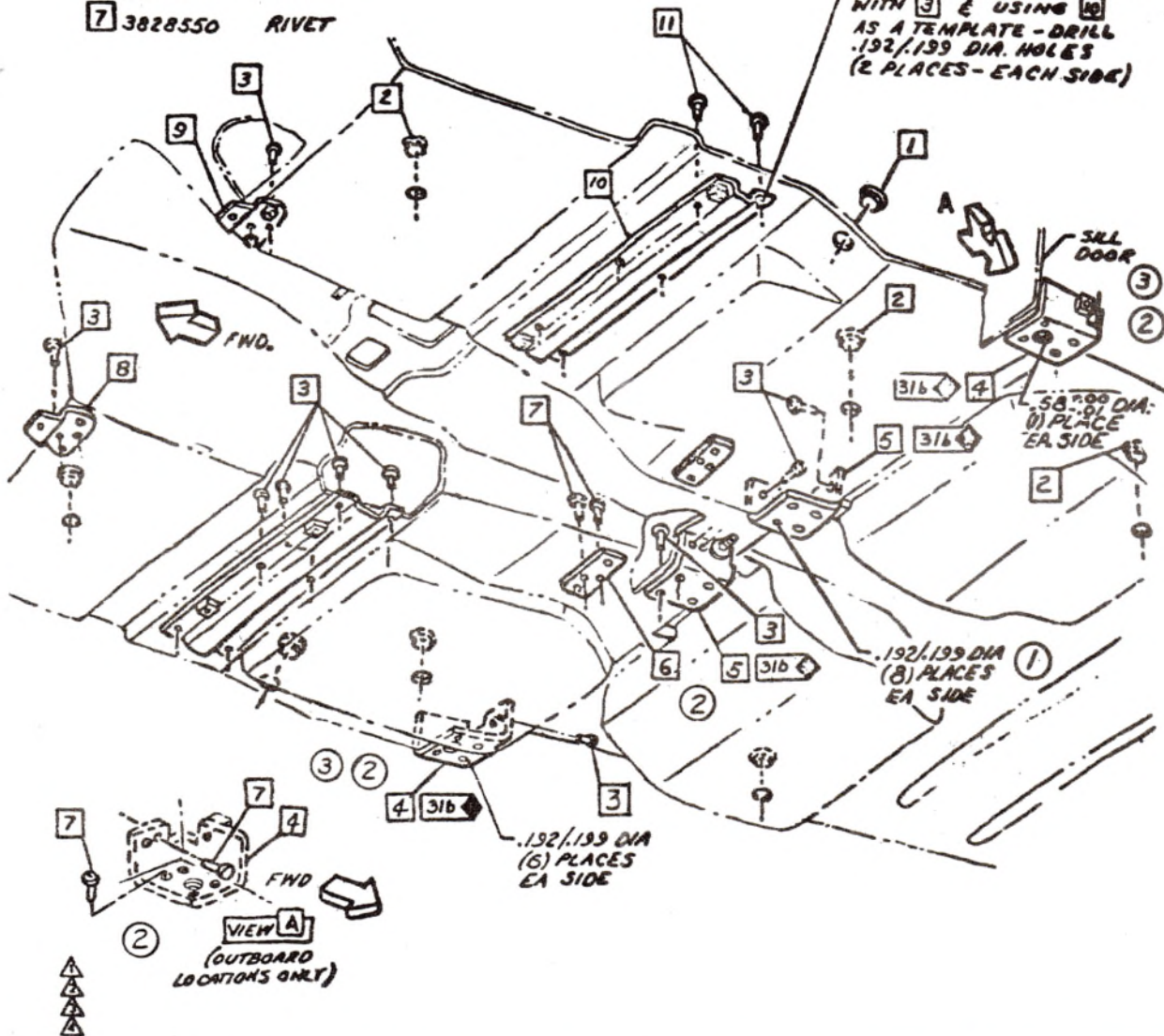
3865300

CORVETTE 19000 SEP

- 1 4729219 PLUG
- 2 4725594 PLUG
- 3 3828548 RIVET
- 4 3866033-4 PLATE ASM. L. & R.H.
- 5 3863621-2 PLATE ASM. L. & R.H.
- 6 3828546 NUT
- 7 3828550 RIVET

- 8 3846938 BRACKET
- 9 3846937 BRACKET ASM.
- 10 3846880 REINF. ASM.
- 11 3828549 RIVET

NOTE SECURE 10 TO U/BODY WITH 3 & USING 10 AS A TEMPLATE - DRILL .192/.199 DIA. HOLES (2 PLACES - EACH SIDE)



CHEVROLET MOTOR DIVISION, GMC.		UPC	DATE	SYM	REVISION RECORD	APPR.	DES.
UNDERBODY - SEAT MOUNTING ATTACHMENTS & SPLASH SHIELD BACKING 19000		1 BOLT WELD B2. X SHEET 1	6-26-64	1	WAS "7" PLACES"		
				2	PLATE DWG. REVISED (4) PLACES		
			10-12-64	3	PLATE DWG. REVISED (2) PLACES		
DWG DATE REL. 6-4	REF: B2.00	L- L- L-					



CHEVROLET

E 101

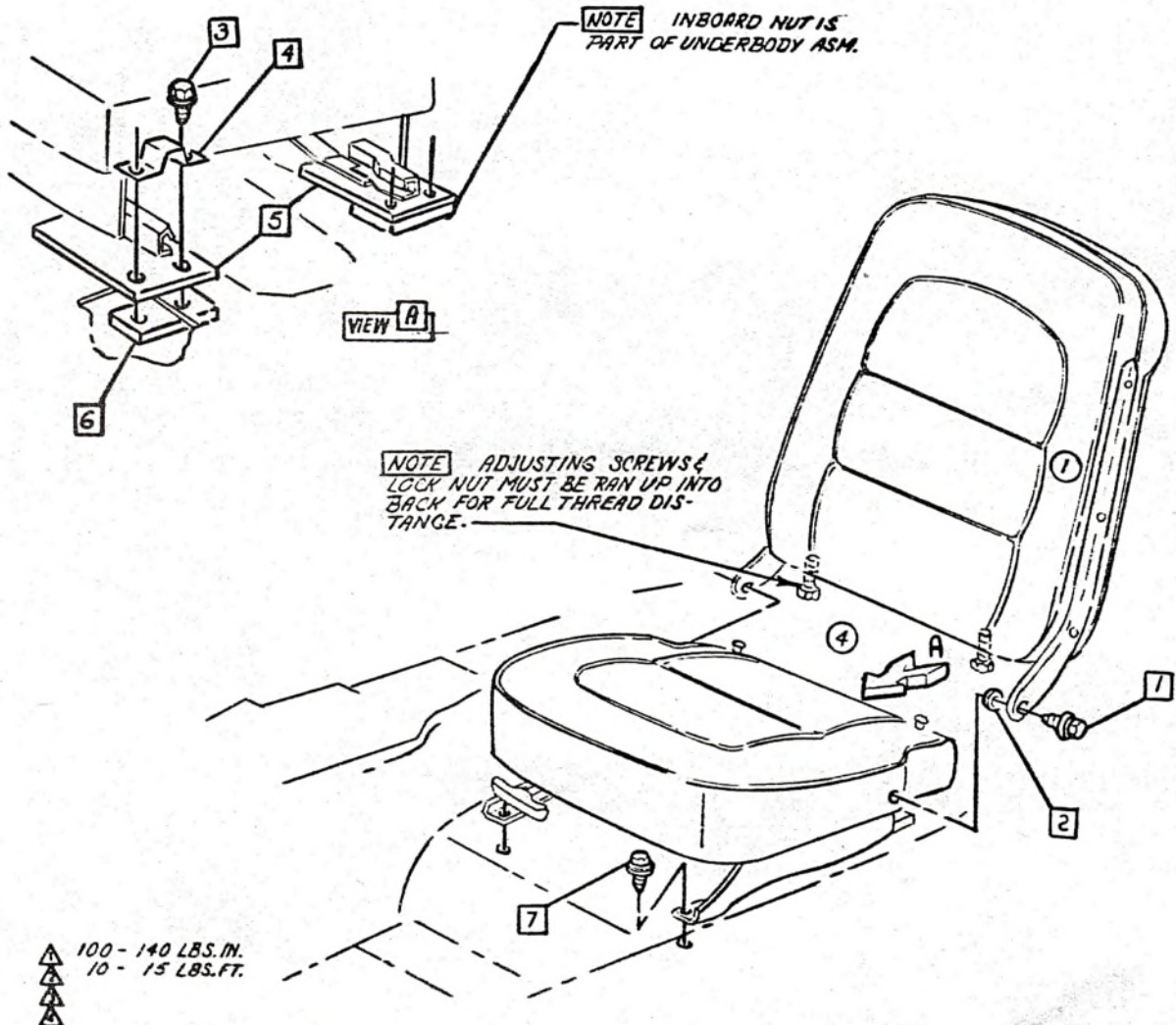
ASSEMBLY INSTRUCTIONS

3865300

CORVETTE 19000 SERIES

- ① 3869372 SCREW ASM.
- ② 2384772 WASHER
- ③ 3847758 SCREW ASM.
- ④ 3846885 BRACKET
- ⑤ 3797491 PLATE

- ⑥ 3828546 NUT
- ⑦ 3847757 SCREW ASM.



CHEVROLET MOTOR DIVISION, GMC		UPC	DATE	SYM	REVISION RECORD	AUTH.	DR.	CK.
SEAT ASSEMBLY & INSTALLATION		1 SEATS	5-1-65	1	DIM. 25" REMOVED	65504	BR	CI
			5-1-65	2	WAS. 3849275 WASHER	16089	BR	CI
			6-11-65	3	ITEM (7) ADDED	68895	JM	CI
			4-8-65	4	SEAT DRAWING REVISED	16117	JC	CI
19000		J4						
DWG. DES. BY S. J. J. REF. PREL. J. L. 70356 L-		SHEET 1						
DATE REC'D BY L- L- L-								