

# Removing/installing seat cushions - 1960 Corvette

Dave Zuberer



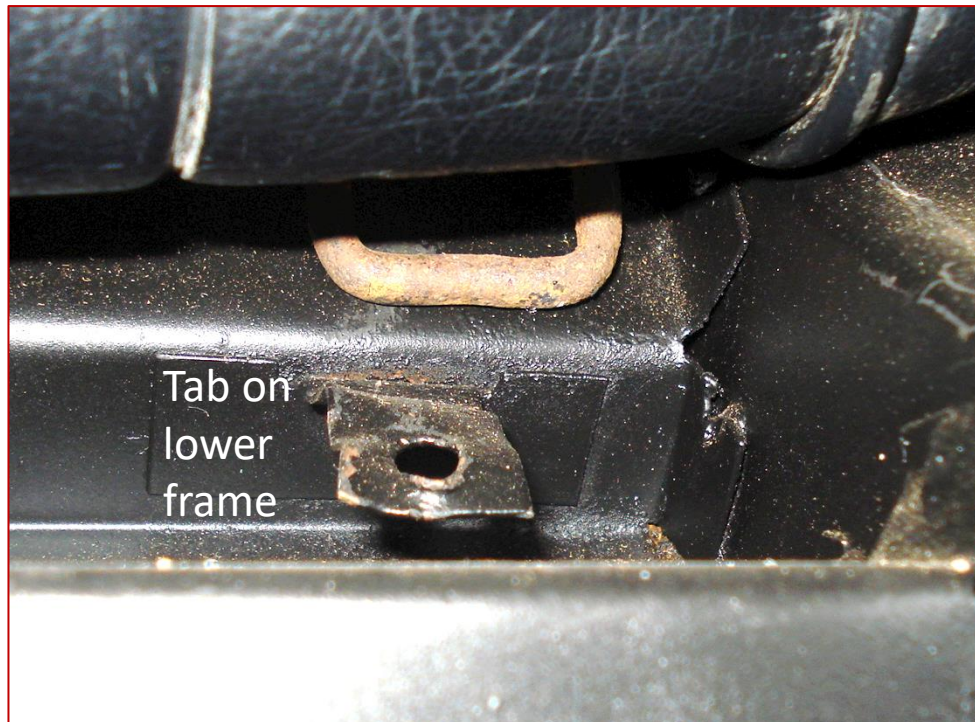
# Removing seat cushions from a 1960 Corvette

Dave Zuberer

Bottom of the seat-back cushion. Note the loops for attaching to the seat frame.



“Loops” on seat-back bottom



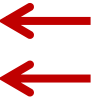
## SEATS

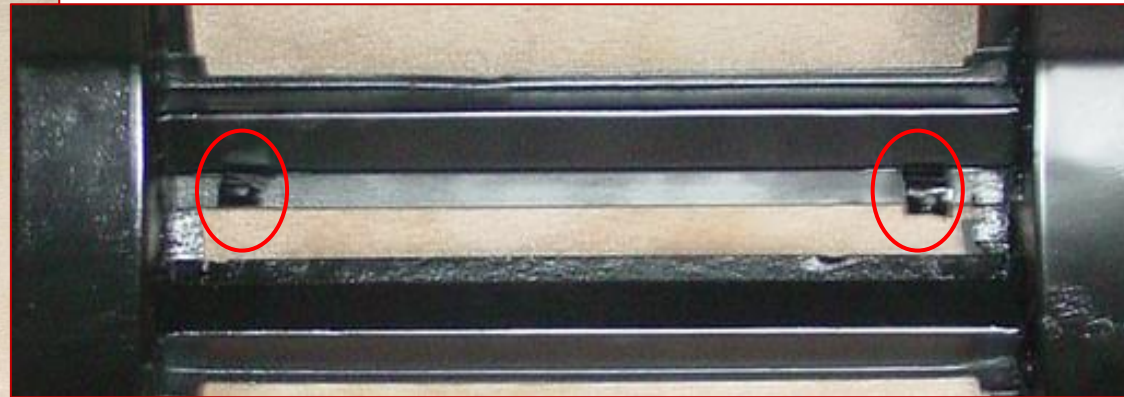
Each of the two bucket-type seats used in the Corvette are mounted on two seat tracks. The outer track of each seat contains the adjuster mechanism.

Access to the seat tracks may be obtained by removing seat assembly from vehicle on 1961 and 1962 models (fig. 52).

On earlier models access to the tracks is obtained by removing the cushions and seat backs from the seat frame. The cushion is removed by lifting the front edge and pulling forward. The seat back is removed by bending up two tabs located under each back at the bottom. The seat back may then be lifted out (fig. 53).

Seats may be removed as follows: Move seat to rear-most position to expose forward retaining bolts. Each inner track is held to the floor pan by three bolts. Each outer track is held to the floor pan by three bolts and to a cross-support by a stud and nut. Each track is held to the seat frame by two bolts. Lubriplate or its equivalent may be used for lubrication of the seat tracks.



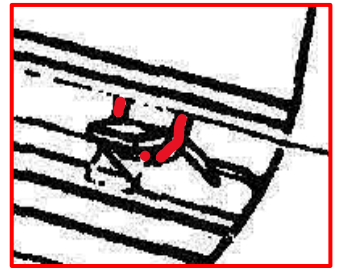
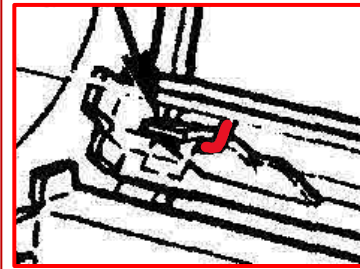
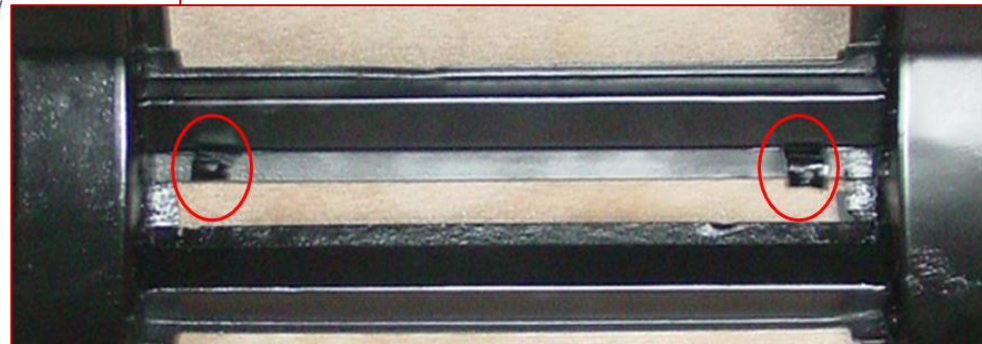
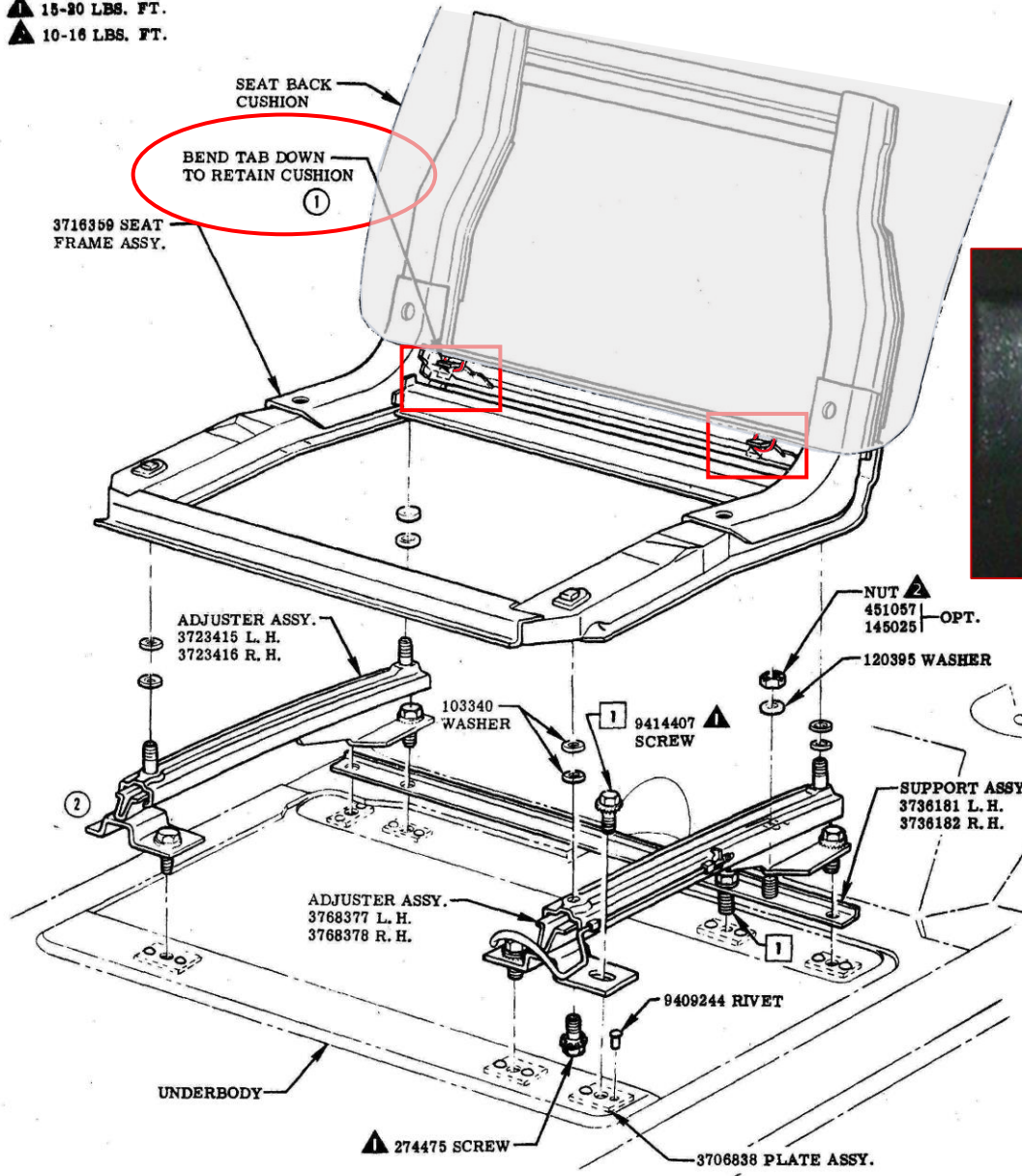


Lower sheet metal seat-back mount “tabs”.  
Bend over loop at bottom of seat cushion  
frame.

If your seat back is attached at the bottom you  
will need to bend the tabs to release it.



▲ 15-20 LBS. FT.  
▲ 10-16 LBS. FT.



SEAT FRAME & SEAT ADJUSTERS

REVISION RECORD				CORVETTE INSTRUCTION MANUAL			
11-11-59	2	PICTURE REVISED	15937	CO	HB	REF.	19877
9-29-59	1	PICTURE REVISED, NOTE ADDED		CO	F	CHECKED	BUCK
		RELEASED				SECT.	J
DATE	SYM.	REVISION RECORD	AUTH.	DR.	CK.	DATE	6-8-59
						PART No.	3774300
						SHEET	2.00

## Mounting the seat bottom cushion

The seat bottom cushion simply rests in the lower seat frame. The circled 90° bends in the seat bottom frame rest inside the front crossmember of the seat frame. In the photos below you can see the worn areas where the seat cushion frame has made its marks over some 62 years of service. To remove the lower cushion just raise it at the front and pull it forward and up. To install the cushion push it back in at the rear and lower it into the frame. Pull on it to make sure you have it seated inside the frame.



Loops at top of seat back “clip” over the top of the seat frame

