

Seat and Seat Belt Mounting Hardware for a 1965 coupe

The photos shown in this “document” are all from our 1965 Coupe.

The intent is to give someone who is new to the Corvette hobby some idea as to how the seats and seat belts are installed and attached to the floor pan. **Please realize that there are some differences in hardware, etc. depending on the year ('63-'67) of one's car.** Regretfully, we only own the '65 mid-year so cannot document those differences with other cars.

There is no substitute for having in your possession the 1963 Corvette Shop Manual (ST 21), the appropriate Supplement (in our case the 1965 Supplement, ST 60), or other appropriate service manual and the Assembly Instruction Manual (the infamous A.I.M.) for your year of vehicle.

I hope you find this information of use should you want/need to remove the seats from your car. If you are lucky, the underbody seat belt hardware is intact on your car; if not, perhaps you can gain some insight into how the various parts attached and coordinated.

Happy wrenching!
Dave Zuberer

The images of the parts shown in the various diagrams, etc., are from the on-line catalogs of **Paragon Corvette Reproductions** and **Corvette Central**. I have used these and other great vendors over the 15 years that I have owned the '65.



Seat and Seat Belt Mounting Hardware for a 1965 coupe



Threaded hole (weld nut) for the dome-headed Allen bolt for attaching outer seat belt anchor. Outer underbody seat belt reinforcement, with weld nut

Nut on stud cable under the body

Holes for bolts mounting the front end of the seat rail. Large seat mount reinforcement plate is attached to floor pan with 6 flat-head rivets (black circles)

Flat-head rivets



Driver-side front seat track bolts

Rear hold down bracket for seat rail.
Note how it is tapered toward the rear!

Tip of the stud for attaching the inner seat belt anchor. Underbody seat belt reinforcement, w/weld stud

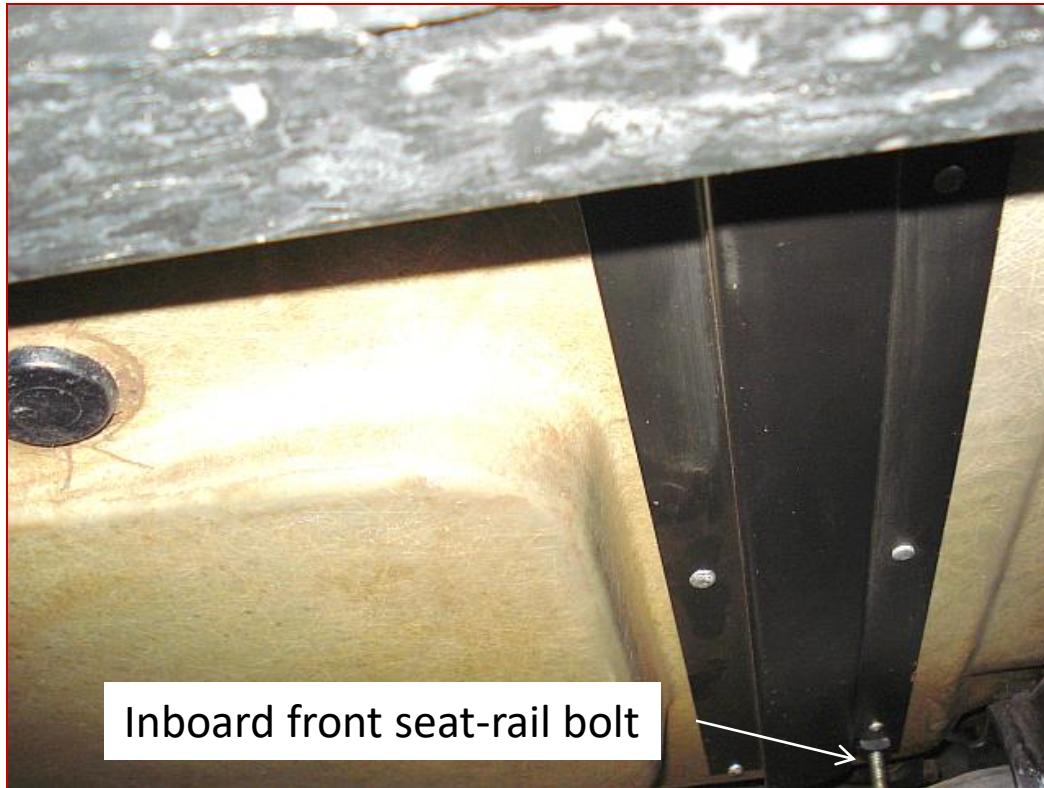
This is the psgr side "floor pan"



Trans. tunnel

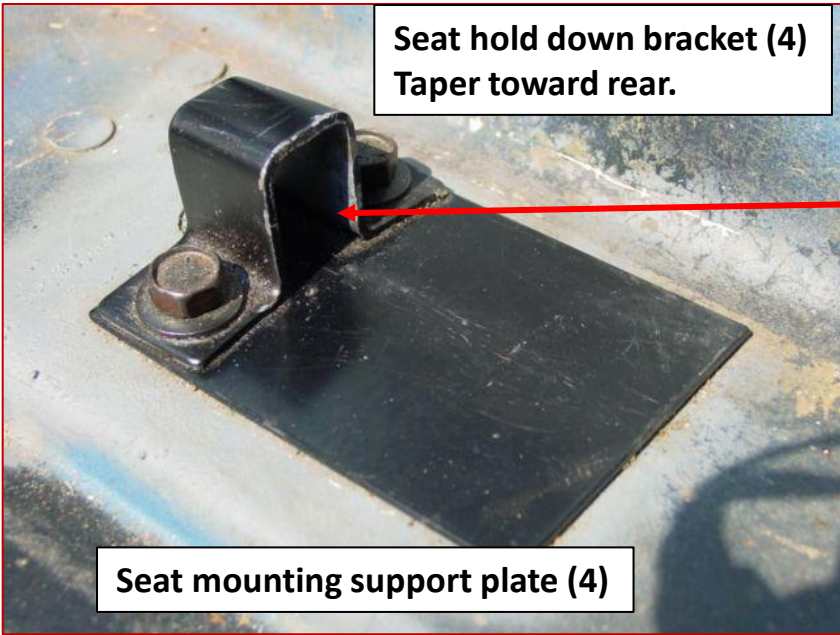


Front Seat mounting reinforcement plate (2)



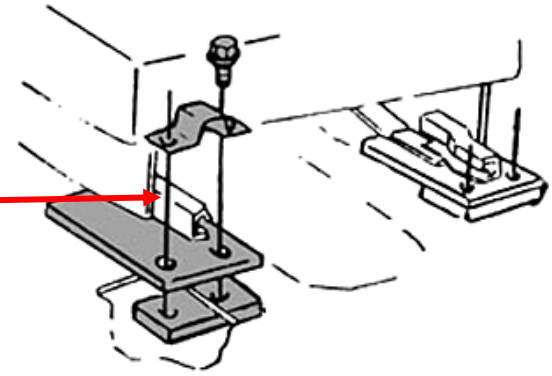
Passenger-side front seat mounting plate

Inboard front seat-rail bolt



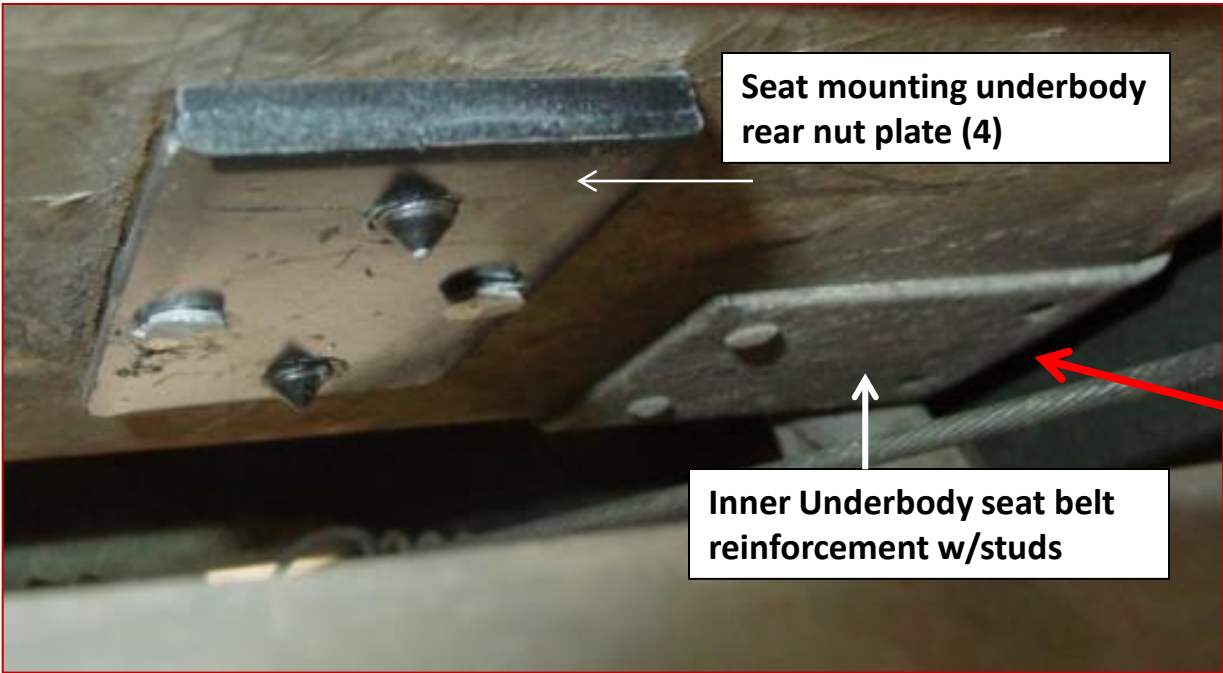
Seat hold down bracket (4)
Taper toward rear.

Seat mounting support plate (4)



See 65 AIM UPC 1 SEATS Sht J4 below

The seat tracks just slide into these rear brackets. To remove the seats just remove the two front hold down bolts, raise the seat front slightly and pull the seat assembly forward. To get the best access to the front bolts, move your seat all the way back.

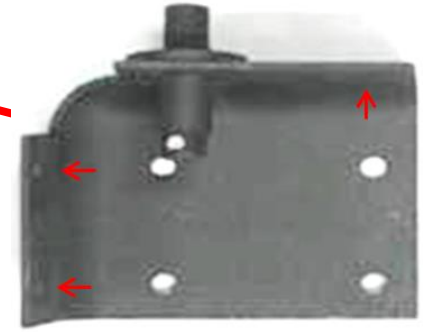


Seat mounting underbody rear nut plate (4)

Inner Underbody seat belt reinforcement w/studs

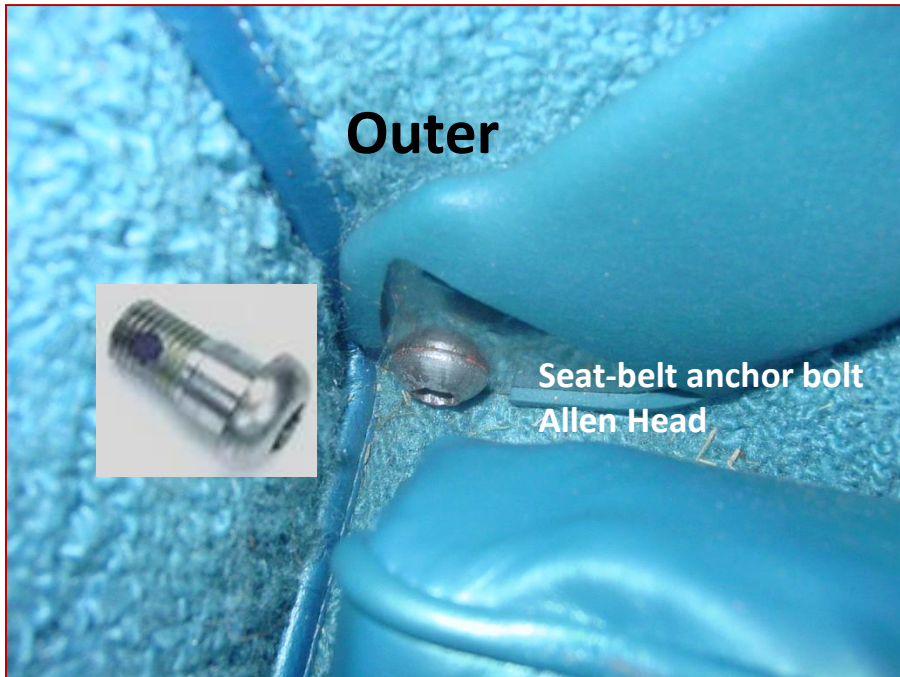


Driver-side front bolts



Right (Psgr)

Paragon Corvette



Outer



Seat-belt anchor bolt
Allen Head

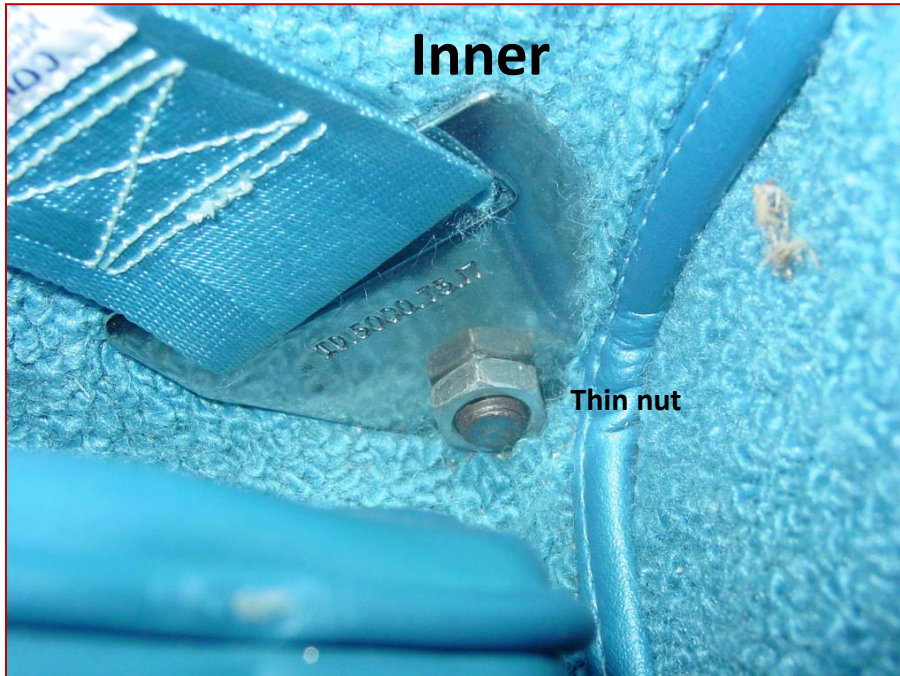
Driver-side seat belt attachment



Outer

Paragon Corvette

Note: '63 and '64 cars use 4 of this type reinforcement and 4 of the socket head anchor bolts

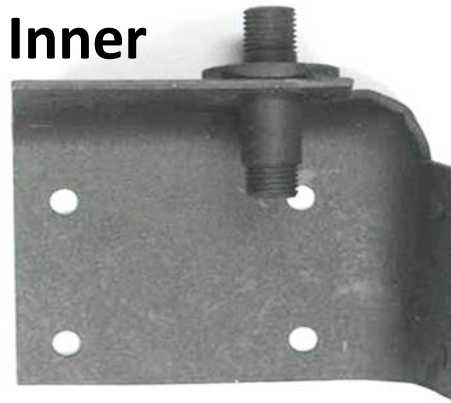


Inner

Thin nut

Underbody Reinforcement plates

Inner



Paragon Corvette



Corvette
Central



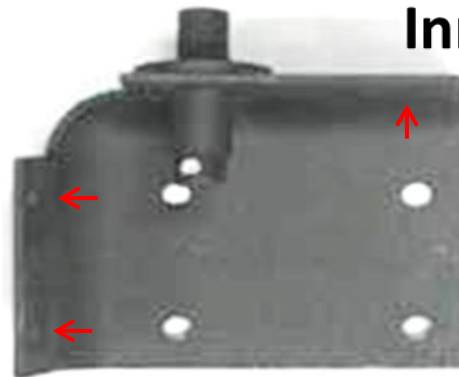
Passenger-side seat belt attachment



Outer

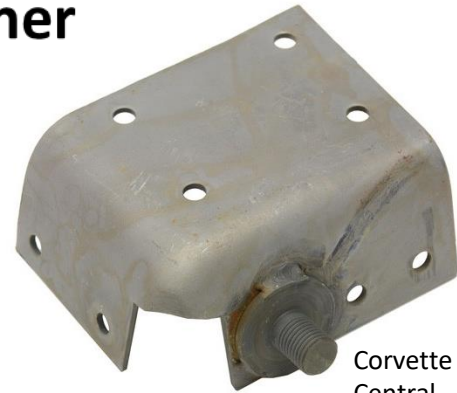
Paragon Corvette

Underbody Reinforcement plates

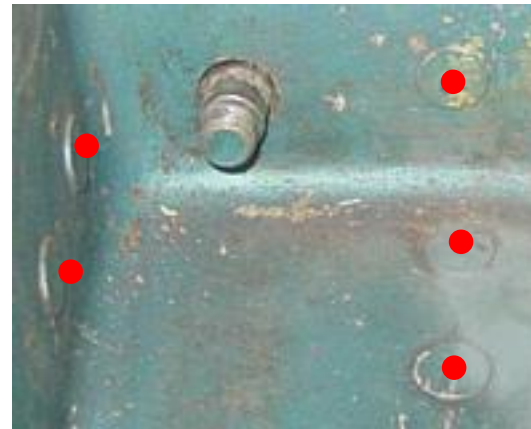


Inner

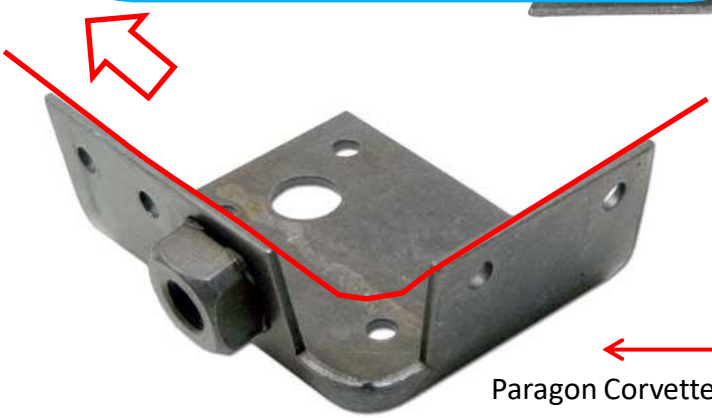
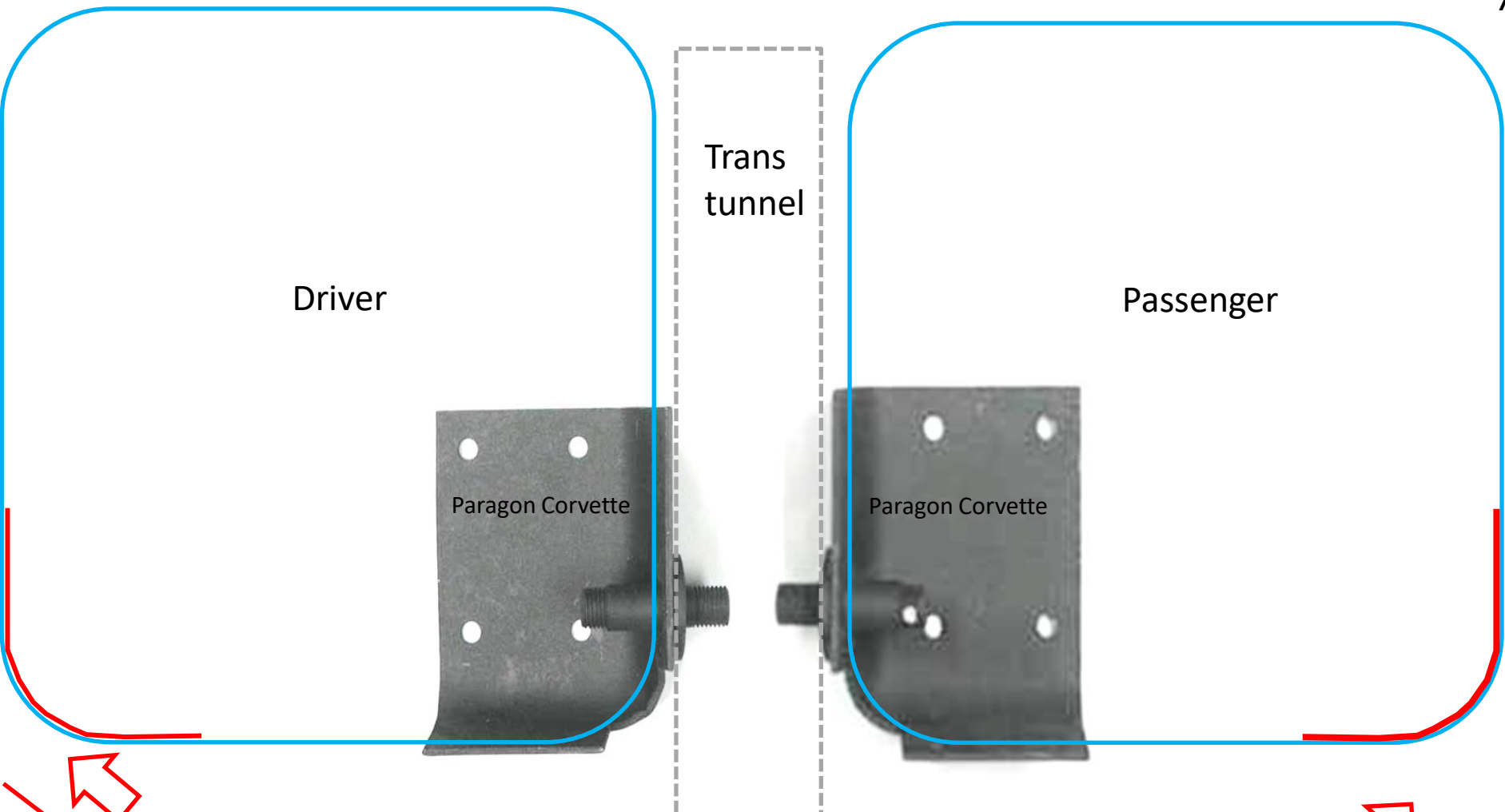
Paragon Corvette



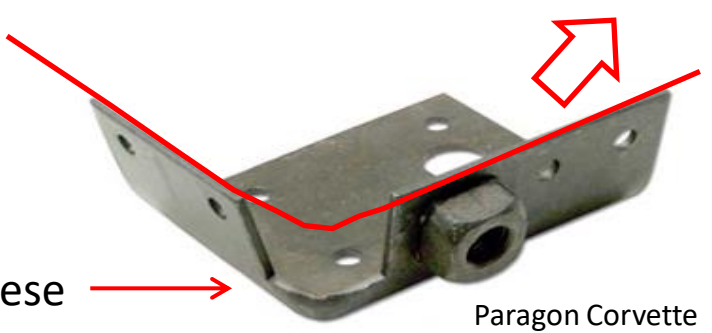
Corvette Central



Red dots = rivets



Underbody seat-belt reinforcement positions



'63 & '64 use 4 of these

Mid-year Corvette Seat-Belt Anchor Bolt



Overall length – $\approx 1 \frac{1}{8}$ "

Shank length – $\frac{7}{8}$ "

Thread diam. – $\frac{7}{16}$ "

Thread pitch – 20 tpi

Threaded length – $\frac{17}{32}$ " ($\frac{1}{2}$ " to runout)

Shoulder (shank) diam. – $\frac{1}{2}$ "

Shoulder (grip) length - $\frac{5}{16}$ "

Head diam. – $\frac{3}{4}$ ", $\frac{5}{16}$ " Allen socket (Button head)

'63 & '64 require four of these; later years only two for the outer seat belt anchors



From the Paragon Bolt Chart

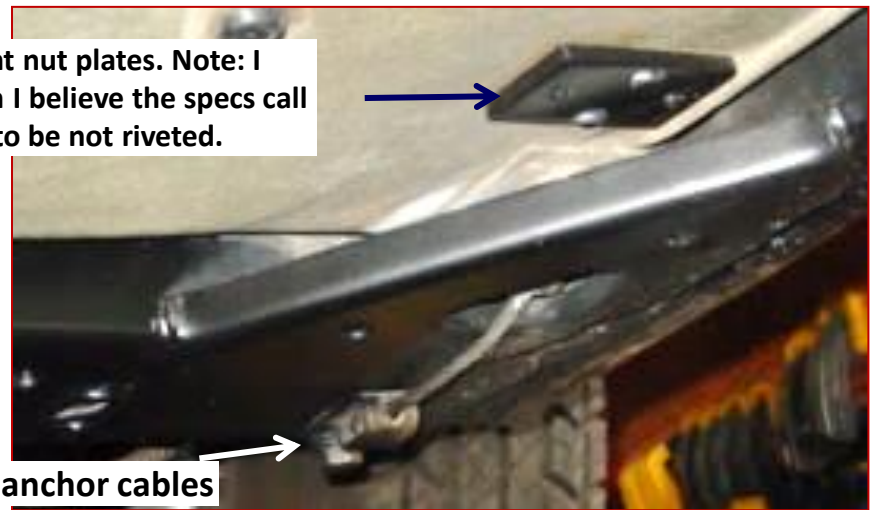
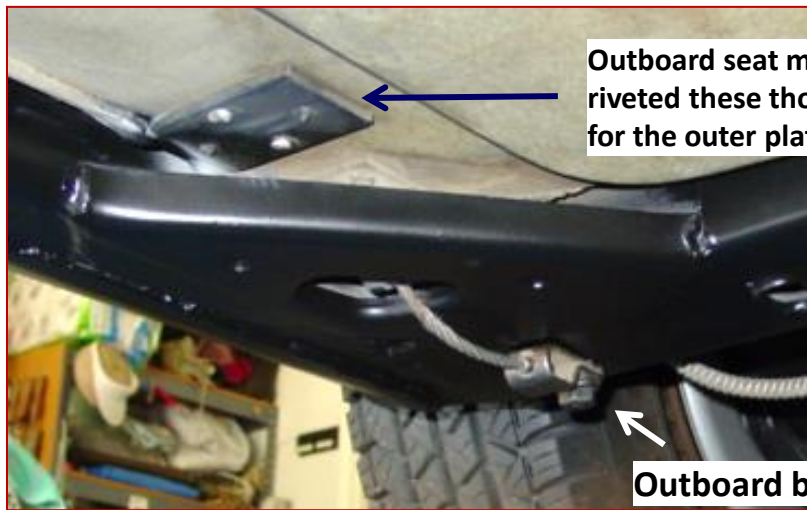
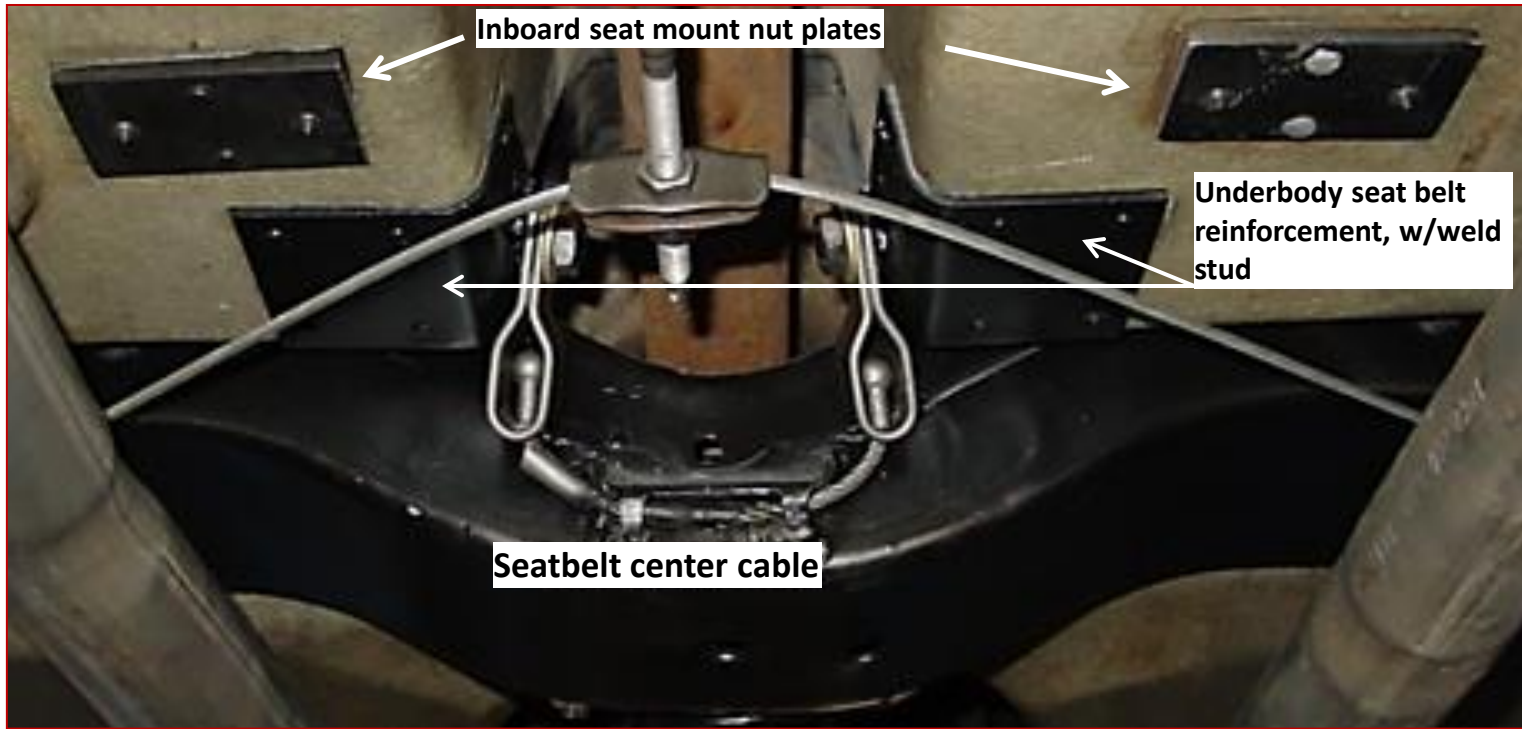
(1) = zinc

Mid-year Corvette Seat-Belt Anchor Nut

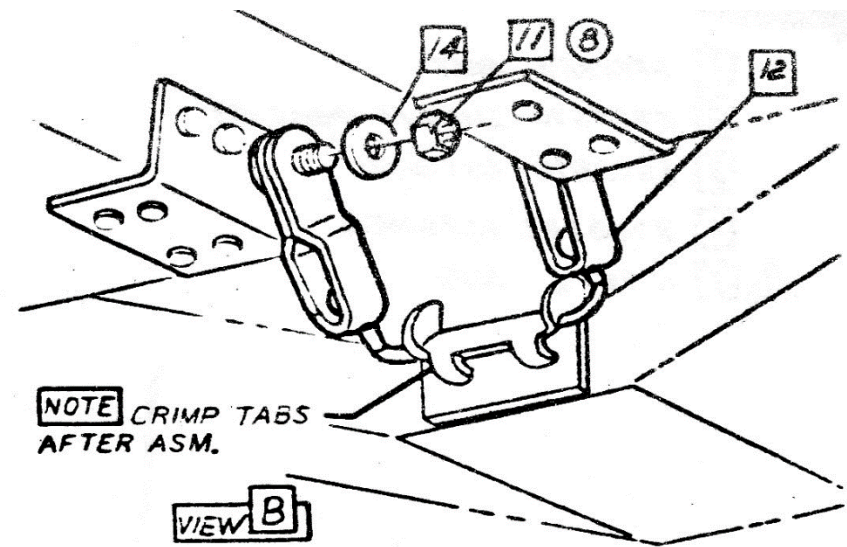


$\frac{7}{16}$ "-20 Thin nut used to attach inner belts to the stud of the underbody reinforcement

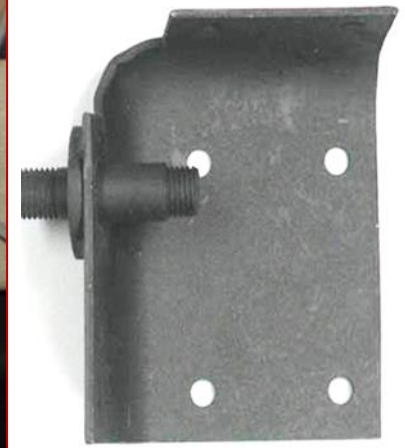
Seat-belt-anchor cables



65 AIM 1 ASM Sht G2



Paragon Corvette



Paragon Corvette



Paragon Corvette

Inner underbody seatbelt reinforcements and anchor cable



Outer
Driver
side

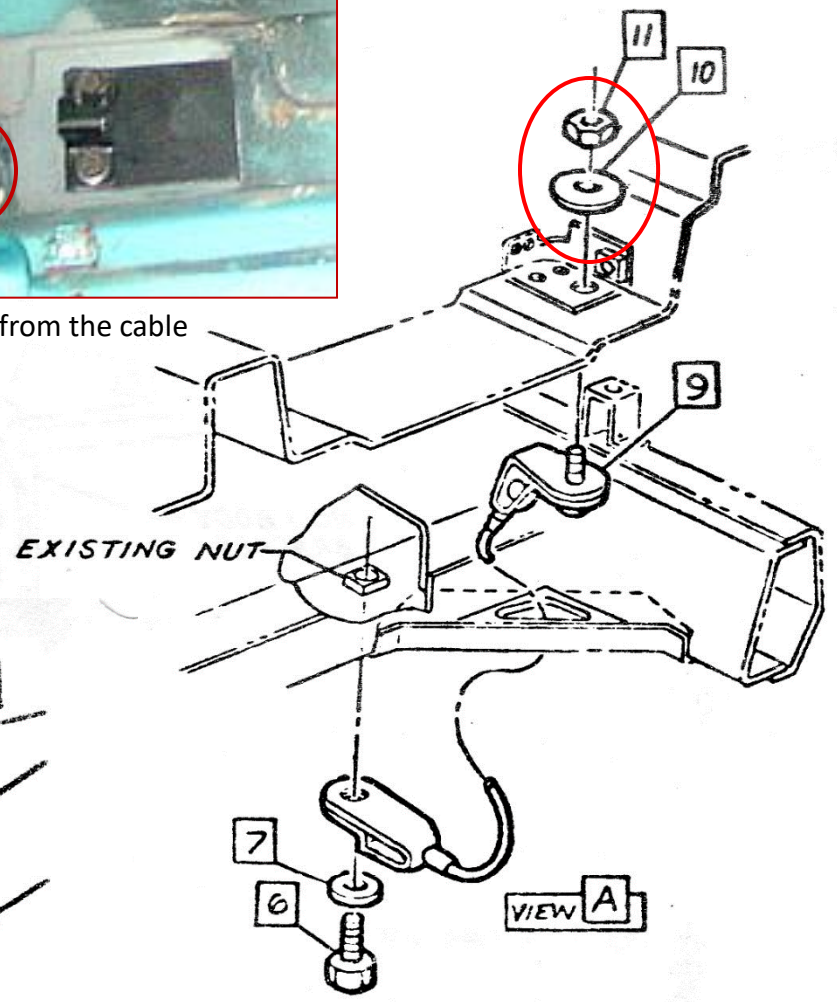


Outer underbody seat belt reinforcement anchor cable

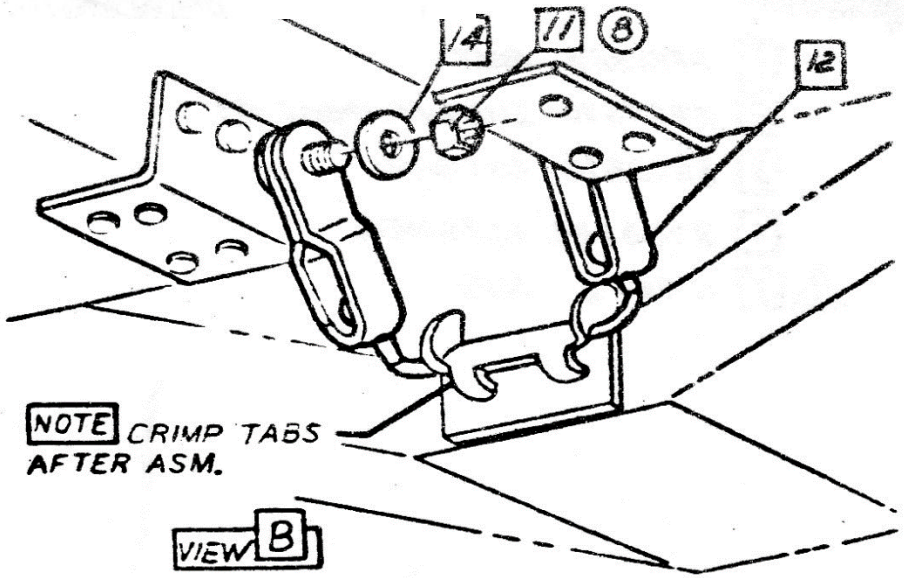
- ▲ 1 3772263 BOLT
- 2 3760886 WASHER
- 3 3842914 CUSHION
- 4 3842913 CUSHION ASM.
- 5 3712559 SHIM (AS REQ'D.)
- ▲ 6 122253 BOLT
- ⑩ 7 103328 L. WASHER
- 8
- 9 3866037 CABLE ASM.
- 10 3816952 WASHER
- ⑨ ▲ 11 272123 NUT
- 12 3863625 CABLE ASM.
- ⑦ 13
- 14 138494 WASHER



Nut on the stud from the cable



Outer (psgr side)



NOTE CRIMP TABS AFTER ASM.

Inner

**1965 A.I.M.
UPC 1 ASM Sht G2**



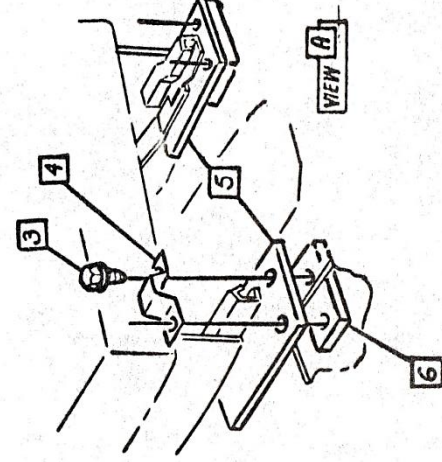
E 101

CHEVROLET ASSEMBLY INSTRUCTIONS

3865300 CORVETTE 19000 SERIES

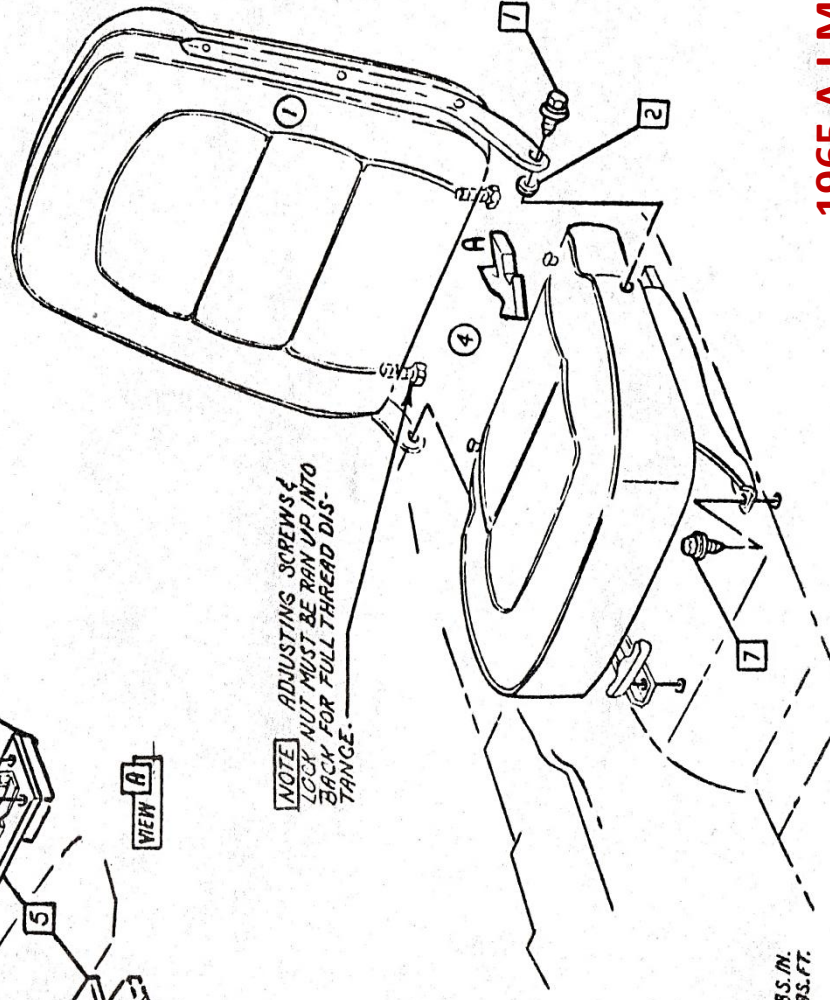
- 1 SCREW ASM.
- 2 WASHER
- 3 SCREW ASM.
- 4 BRACKET
- 5 PLATE

- 6 3828546 NUT
- 7 3847757 SCREW ASM.



NOTE INBOARD NUTS
PART OF UNDERBODY ASM.

NOTE ADJUSTING SCREWS &
LOCK NUT MUST BE RUN UP INTO
BACK FOR FULL THREAD DIS-
TANCE.



▲ 100 - 140 LBS. IN.
▲ 10 - 15 LBS. FT.

1965 A.I.M.

CHEVROLET MOTOR DIVISION, GMC®

SEAT ASSEMBLY
& INSTALLATION

19000

DWG. NO. 5234K REF. Pkt. J1. L-70856 L-
DATE REV. 1-5-52 L- L-

UPC	DATE	SYM	REVISION RECORD	AUTH.	DR.	CK.
SEATS	5/28/54	1	DIM. CO. REMOVED	65584	BR	CV
	5/28/54	2	MATERIALS W/ASHER	6089	BP	CV
	5/28/54	3	1/2" DIA. HOLE	6889	DM	CI
	4-8-65	4	SEAT DRAWING REVISED	7617	JC	CI
J4						
SHEET 1						