

FIGURE #1

THIS IS THE JOINT CAUSING THE PROBLEM

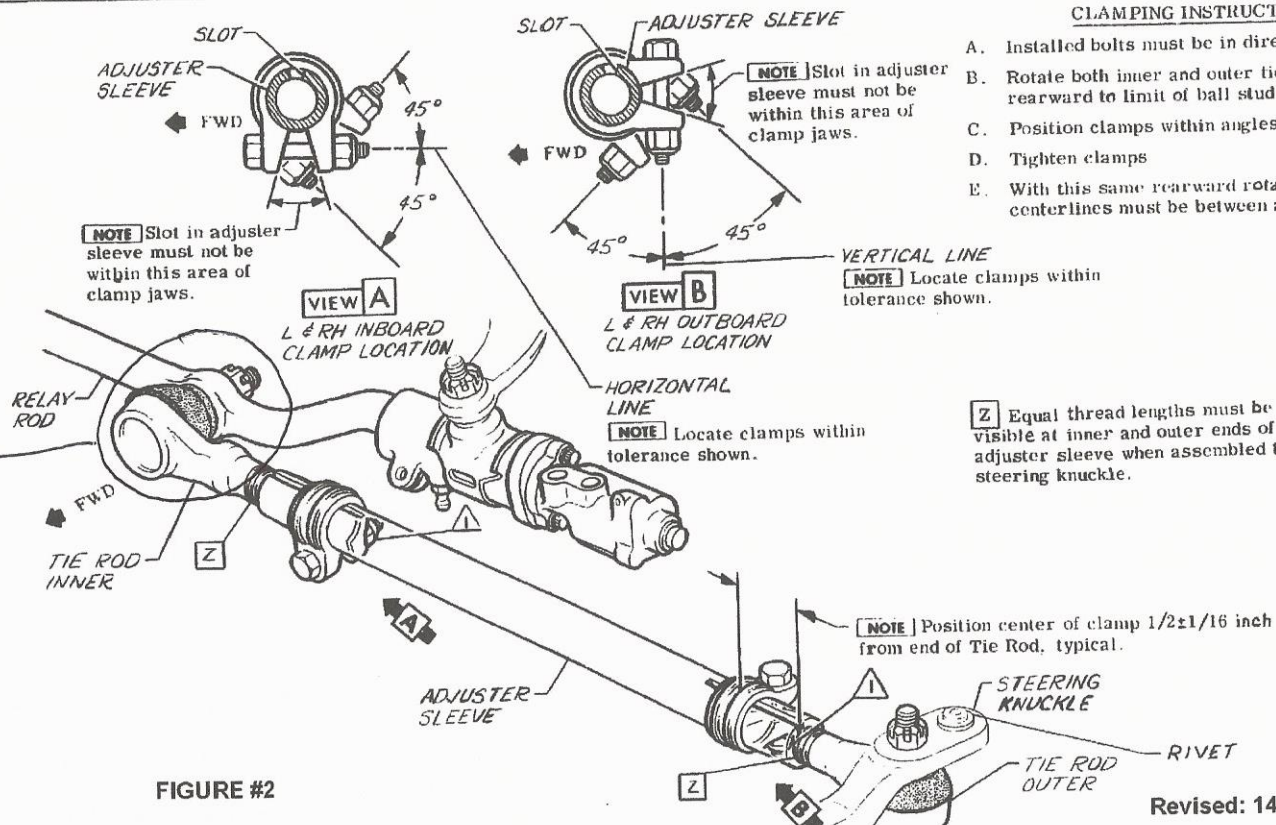


FIGURE #2

CLAMPING INSTRUCTIONS

- A. Installed bolts must be in direction shown.
- B. Rotate both inner and outer tie rod sockets rearward to limit of ball stud travel.
- C. Position clamps within angles shown.
- D. Tighten clamps
- E. With this same rearward rotation, all bolt centerlines must be between angles shown.

**NOTE** Slot in adjuster sleeve must not be within this area of clamp jaws.

**NOTE** Slot in adjuster sleeve must not be within this area of clamp jaws.

**NOTE** Locate clamps within tolerance shown.

**Z** Equal thread lengths must be visible at inner and outer ends of adjuster sleeve when assembled to steering knuckle.

**NOTE** Position center of clamp  $1/2 \pm 1/16$  inch from end of Tie Rod, typical.

Revised: 14FE02