

Figure 4 — Installation of manual transmission mounting bracket.

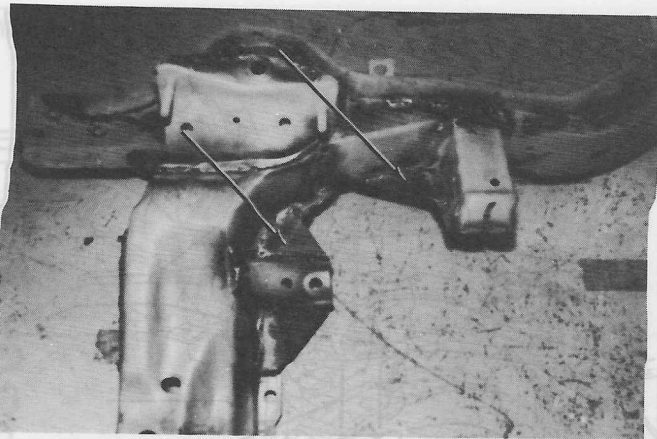


Figure 6 — Weld gussets to crossmembers and lower control arm bracket.

The rear suspension differential carrier mounting crossmember should have the rubber mounts removed and replaced with steel plates. (Figure 8, page 4-4) There is some freedom to adjust the height of these plates to mount the differential carrier further up into the frame. If this is done, the corresponding adjustment should be made in the front differential case attachment.

The differential mount crossmember may also be replaced by a fabricated tube to raise the differential approximately 1 inch higher. The rear frame rails must also be trimmed to raise the bump travel & the shock absorber brackets are relocated upward 1 inch.

The frame should be boxed in at the front frame rails forward of the front suspension crossmember over the stabilizer bar attaching points (Figure 9, page 4-5) to provide adequate stiffness for stabilizer bar loads to be imparted to the chassis.

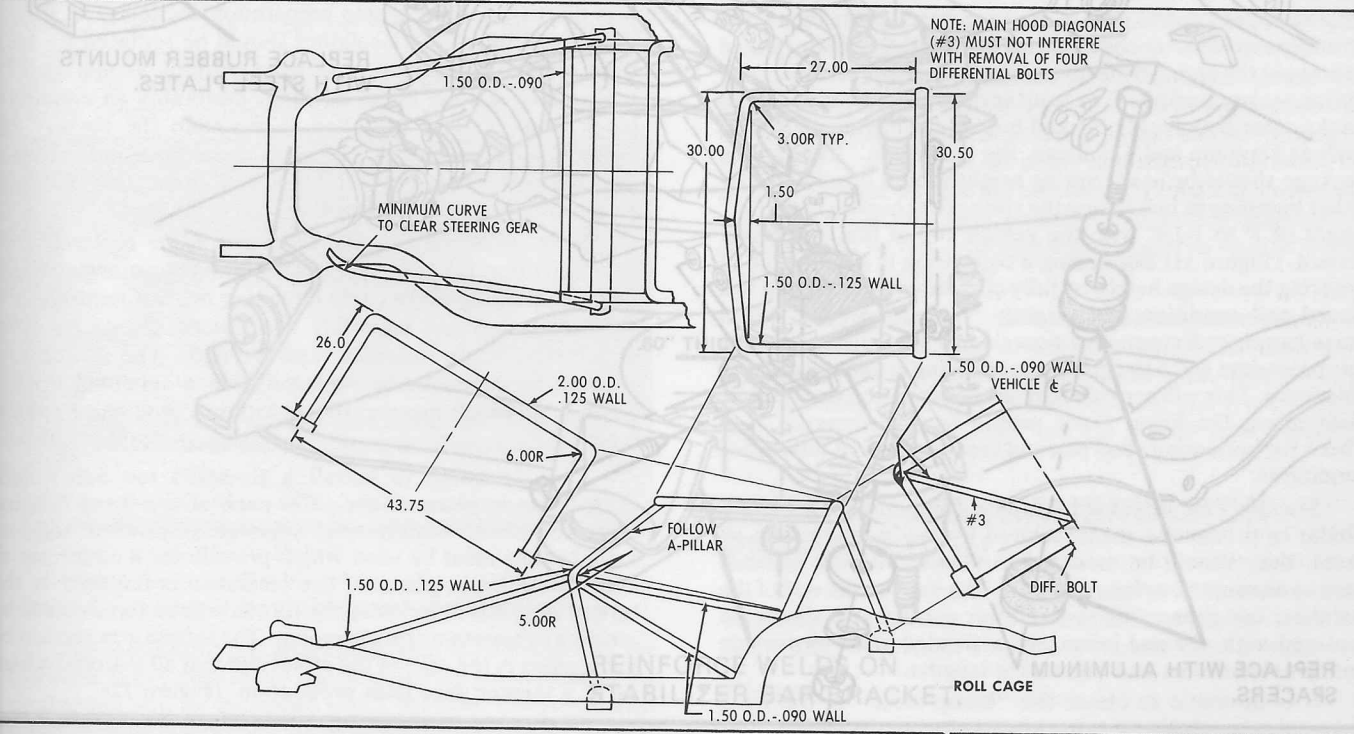


Figure 5 — Typical roll cage welded to the frame assembly.