

“How To: Correct Your C4's Window Alignment”

By Robert Ibarra, “VetteUSA93”

If your passenger or driver side windows is scraping paint off the pillar of your C4, The following steps will help you fix the problem with the window. When I was having the same problem, there were only two items that needed to be corrected.

- 1) Replace the broken Window Stop Guide, and**
- 2) Adjust/correct the height of the Front Window Stopper L-Bracket.**

This is a catalog picture of a window stop guide (These guides are a **side specific** part, so be sure to get the correct one)



This is a picture of the front window stopper L-Bracket:



Step 1:

Remove the door trim panel. Most everyone knows how to do this, so I can skip over the details on that. After removing the panel and disconnecting all wiring harnesses, switches, etc, this is what is revealed:



Step 2:

Now that the door panel has been removed, STOP! Before you proceed any more, reconnect your window switch. Now look underneath the thin black foam insulation to reveal the sheet metal that covers your door's innards.

There should be 7(seven) black "10mm" bolts and 1(one) silver "13mm" bolt that are keeping that sheet metal in place. Use your socket wrench and remove the bolts (*marked in red in the photo below.*)



Step 3:

Remove the sheet metal. *Please note that this sheet metal is not on the outside of the door panel, it is inside the door panel. Also, keep in mind that your door lock mechanism is attached to the sheet metal. I, myself, didn't remove any of the small mechanical rods that were attached, I merely bent the sheet metal out from underneath the door panel to reveal all of the window mechanicals. **(Please see Page 4 for instructions on how to properly remove the sheet metal)**



Once you have removed the sheet metal from inside the door, roll your window down about ½ way. When you do this, you should see the location of the Window Stop Guide (highlighted in red.)

Be sure to look inside of your door panel to see if there are any treasures or debris in there.

This next picture is the broken remains of the old window stop guide.



“How to Remove the Sheet Metal”

A comment from Corvette Enthusiast, “Jet-Jock”

“Only thing I'd comment on is the Step 3, after removing all the bolts, reach inside where the two plastic (white) rod guides are with a small screwdriver and pop the rod out by pushing on the rod towards the outside of the door. (Don't attempt to turn the guides from the side facing you in the flat blade slot, this will break them, only remove the guides (if necessary) once you have the rods free.)

“Once the rods pop free, lift up on the accessory panel until it clears the bottom opening. Slide it out from the bottom first as it comes clear reach behind and slide the locking tab off the handle latch and lift up on the rod to free it. Then where the two rods connect at the rear open the ears of the lever with a screwdriver blade to free the one rod and lift up on the second rod that attaches to the lock actuator.

“A pair of needle nose pliers helps to pop those push type fasteners free. When in place they along with the wire harnesses help hold the sound panel in place. Then remove the accessory mounting plate (panel). Also upon installation its helpful to put either painters tape or masking tap over the slip nuts so they stay in position and don't rattle.”

Step 4:

Now it's time to remove the old Window Stop Guide. Your new (passenger side) guide should look like this (Remember, these window guides are **side specific**)



There is a retainer nut that secures the guide to the window, and it looks like this:



Because I didn't have the retainer nut removal tool, I had to make good with the tools I had. Essentially, the retainer nut removal tool is needed to properly secure the retainer nut so that it doesn't spin when you try removing the bolt. For me, a pair of vice grips did the job. Probably dumb, in hindsight, to use vice grips to secure that nut. You should always use the proper tools whenever possible.

Here is an image of the proper tool you should use:



The Snap-On part no. is: S9610

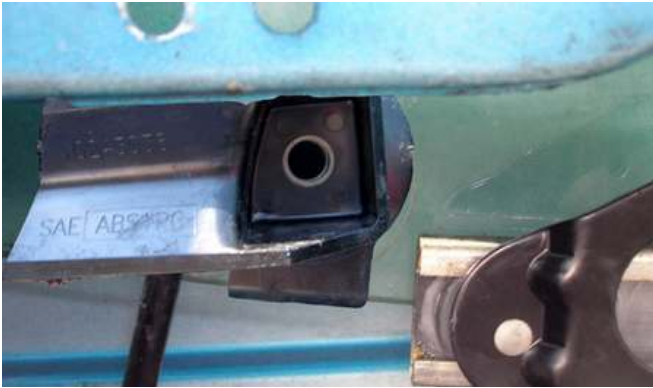
(Notice the two protrusions at the 6 O'clock and 12 O'clock positions, which are there to prevent the retainer nut from spinning.)

Step 5:

Once you have removed the bolt, window stop guide, and retainer nut, this is what you should see.



OK, now put on that new window stop guide. (The new guide should fit perfectly so that you can attach it to the window while allowing it to slide along that black vertical bar you see in the picture)



Now, just put the retainer nut on the backside of the new window guide, and bolt it into place (Remember, you'll need to use the retainer nut tool or a tool like vice grips to secure that retainer nut again so it doesn't move, etc). **Do not overtighten! If you overtighten the bolt and nut, you risk breaking the window!**

You may or may not need to proceed beyond this step if your window still doesn't align properly when you try closing the door. I took it upon myself to go ahead and replace the old window stopper L-bracket, as was suggested to me by fellow forum members.

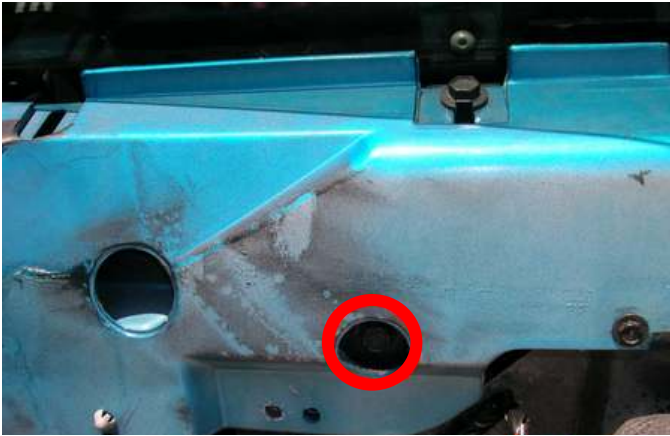
(Assuming you don't want to replace the bracket, then just put everything back together again.. disconnect window switch, reattach the sheet metal, foam insulation, door trim panel/pieces, reconnect window switch)

If you want to replace your old L-bracket, proceed with *Step 6*.

Step 6:

OK, let's replace the L-bracket. This is a very easy step.

Let's look at this picture: The circled area is the bolt that holds the L-bracket in place.



Pictured below is the old bracket (Top); & the new bracket (Bottom)



Now unbolt and remove the old L-bracket, and put the new one on. Keep a mental note of how the old bracket is attached. The Velcro on the new bracket should be facing away from you, and should be 'high' on the door. Almost think of the bracket like a Tazer gun; hold the 'bare' metal part in your hand, with the Velcro end acting as the 'barrel' of the tazer gun pointed at someone, and ready to give 'em a light little jolt.

You may need to adjust the height of the bracket so that when you roll up the window, the top of the window glass stops evenly along its horizontal axis. If you roll up the window and the glass is still crooked/cockeyed when you try closing the door, you need to adjust the bracket height some more. Adjust the bracket until the window is no longer crooked.

You're Done!!!!!!

Now just put everything back together again.. disconnect the window switch, reattach the sheet metal, foam insulation, door trim panel/pieces, reconnect window switch

Here's the BEFORE picture of the window:



Here's the AFTER picture:

