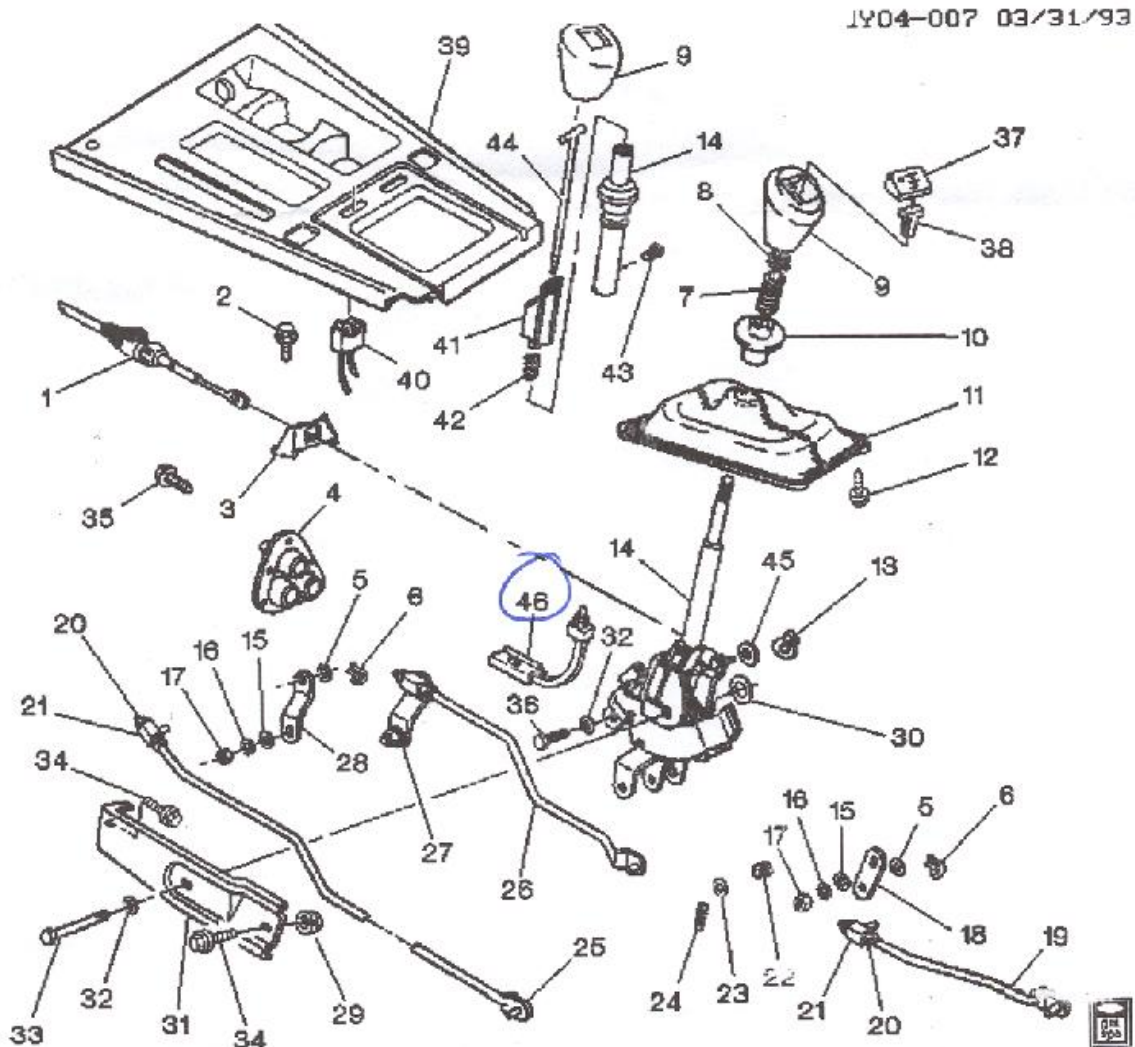


C4 Corvette
Doug Nash 4+3 Transmission
Overdrive Switch Installation

Compiled by Peter Mihaltian, NCRS #47240

Make: CHEVROLET, Year: 86, Model: Corvette

Item #46: Overdrive switch - part #14087693



REMOVAL:

1. Disconnect negative battery cable.
2. Remove the screws retaining the trim plate for the instrument cluster. Remove the knob for the headlight switch; next remove the lever for tilt steering column and then the trim plate.

C4 Corvette
Doug Nash 4+3 Transmission
Overdrive Switch Installation

Compiled by Peter Mihaltian, NCRS #47240

3. Remove the screws retaining the instrument panel accessory trim plate and then remove the trim plate.
4. Remove the screws retaining the console trim plate. Pull trim plate back and disconnect the electrical lead to cigarette lighter. Remove the screws retaining shift boot to trim plate, next remove trim plate.

5. Remove the overdrive switch button from the shifter knob. Use care when prying the button from the shifter. Count the number of turns required to remove the rod.

6. Remove the rod for the overdrive switch from the shifter. Count the number of turns required to remove the rod.

7. Loosen the nut retaining the switch to the shifter and remove the switch and actuator block from the shifter. **Care must be taken not to lose the spring located in the actuator block.**

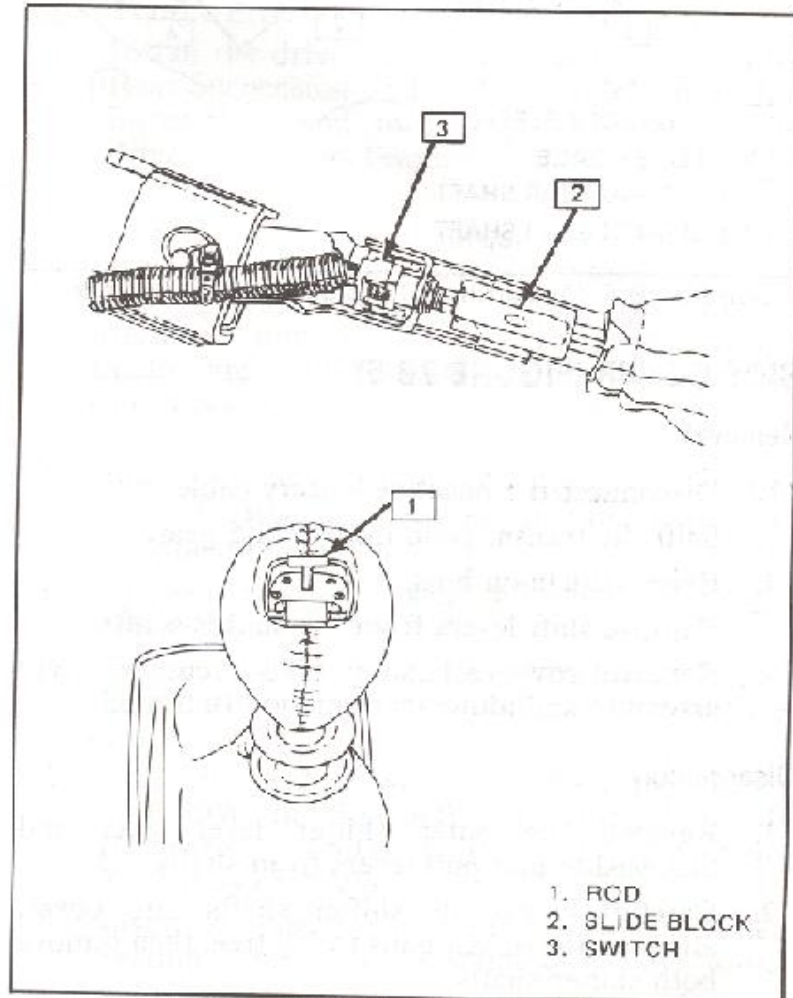


Figure 7B-9 Overdrive Switch

8. Disconnect the electrical lead for the switch.
9. Remove the pin retaining the switch to the actuator block.

C4 Corvette
Doug Nash 4+3 Transmission
Overdrive Switch Installation

Compiled by Peter Mihaltian, NCRS #47240

INSTALLATION:

1. Position the switch to the actuator block and install retaining pin. Lubricate the sliding surface on the actuator block with grease.
2. Compress the return spring in the actuator block using a small screwdriver, next position the switch and block on the shifter. Care must be taken not to lose the spring located in the actuator block.
3. Tighten the switch retaining nut. Apply Loctite #1052624 or equivalent on the threads before tightening.
4. Install the overdrive switch rod in the shifter. Screw the rod into the actuator block the same number of turns it took to remove it. Install the switch button. (the button should be flush with the top of the shift knob. If it is not, remove the button and turn the rod in or out as necessary to make it flush)

7B-10 83MM MAN TRANS/AUTO O/D

Y CARLIN

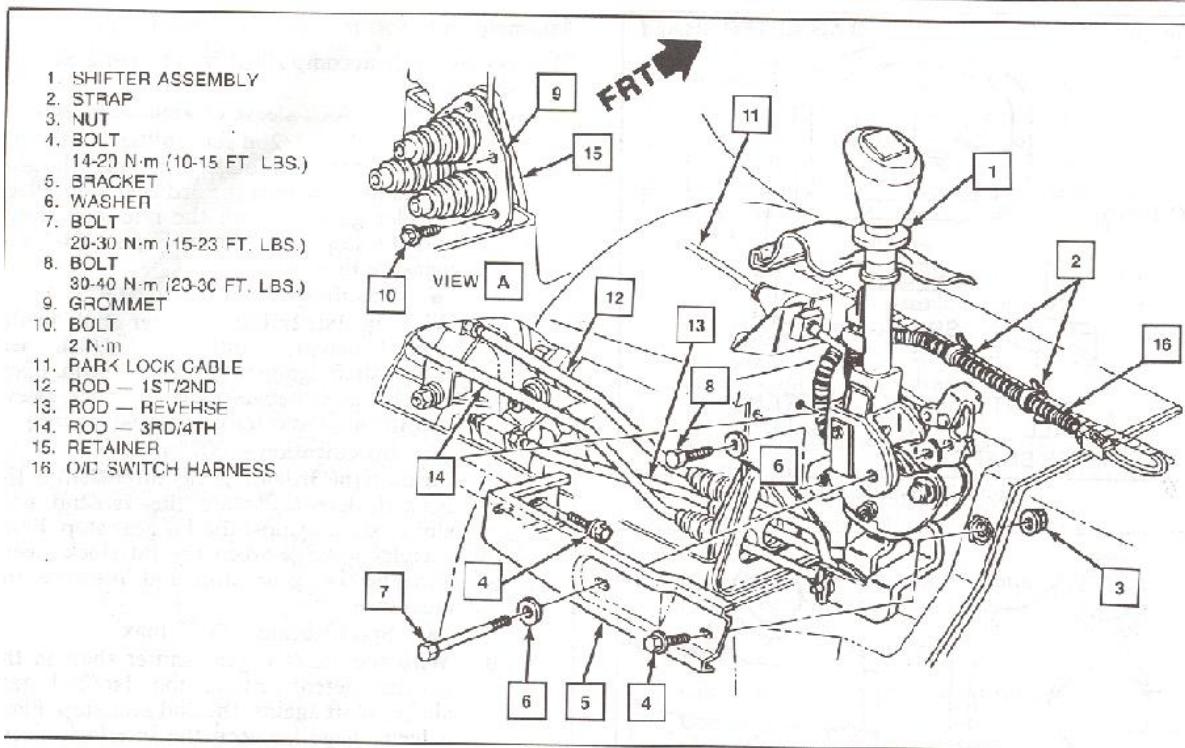


Figure 7B-8—Shifter Attachments

5. Position the consol trim plate to the shifter boot and install retaining screws.
6. Connect the electrical lead for the cigarette lighter.

C4 Corvette
Doug Nash 4+3 Transmission
Overdrive Switch Installation

Compiled by Peter Mihaltian, NCRS #47240

7. Position the consol trim plate and install the retaining screws.
8. Position the instrument panel accessory trim plate and install the retaining screws.
9. Position the instrument cluster trim plate and install the retaining screws. Install the knob for the headlight switch and the lever for the tilt steering column.
10. Connect the negative battery cable.