

For those who want to remove cluster it may be an advantage to remove center console first. Personally I do not remove center console, but how to remove the console is shown under point 18

1. Remove foglight switch, disconnect switch and remove screw (7mm socket)



2. Remove 2 stk torx screws at the bottom side of the knee bolster



3. Remove torx on left side av tenningsnøkkkel (behind cover of the cabin temp sensor)



4. Remove the knee bolster



5. Unscrew 4 stk screws(two each side) (7mm socket) holding a metal cover under the steering wheel column





6. When these 4 screws are removed the cover can be removed from the car



7. Remove two nuts (13mm socket) , one on each side of the steeringwheel column .



8. When both nuts are removed , the steering column column drops down a bit , shown on the photo



9. Remove two torx in the upper part of the cluster bezel



10. Then remove two screws (7mm socket) securing the lower part of the cluster



11. This is the HUD connection plug .



12. Tilt the upperpart of the cluster against you and remove the HUD plug like shown .



13. Tilt the steering wheel and lift the cluster upwards carefully on the left side off steeringwheel



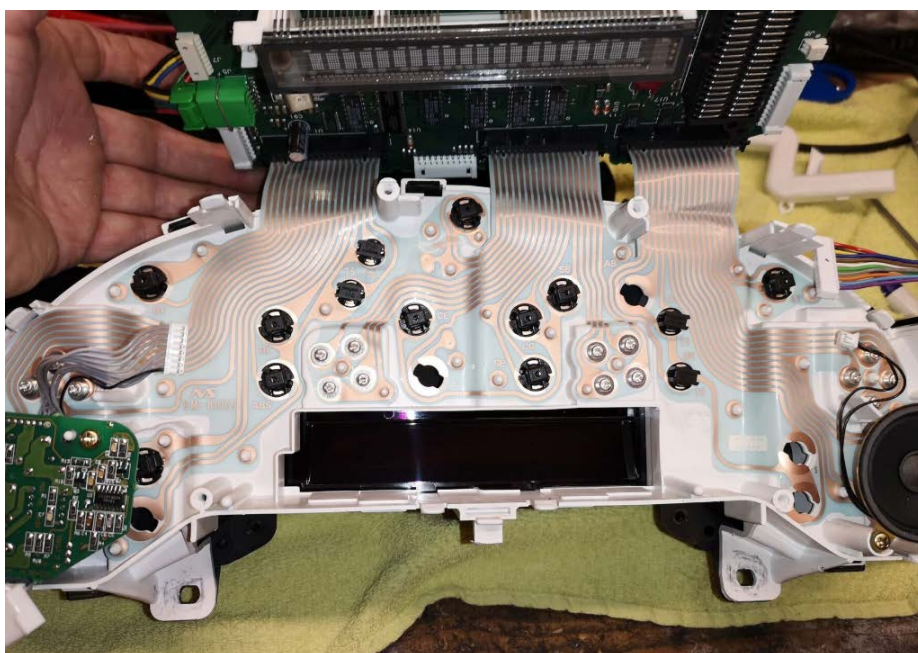
14. When the cluster is out like this it is very easy to disconnect the main cluster connector .
When this has been done the cluster is available for several operations (15 & 16) <:o)



15. Upgrade to LED light in the DIC buttons



16. Replacing bulbs

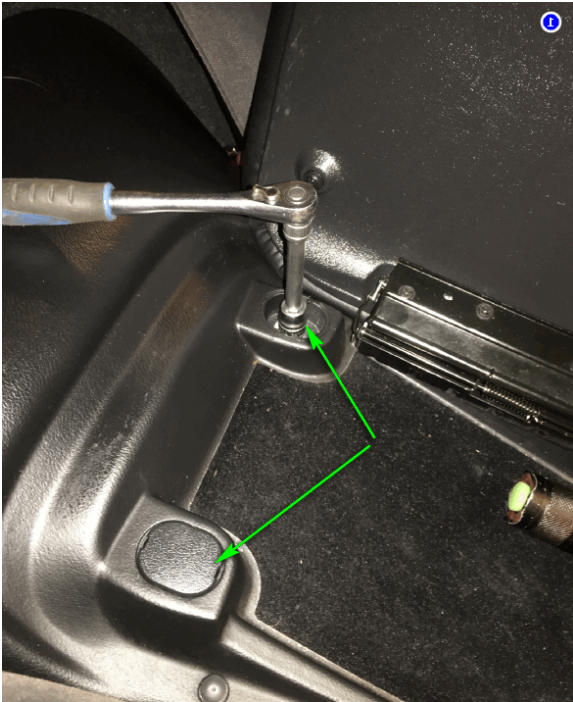


17. When I installed LED's I got the cluster connected like this and checked the LED visibility before I put the cluster back in the car .



18. Removal of center console :

Flip up the center cover and remove two nuts (10mm socket)



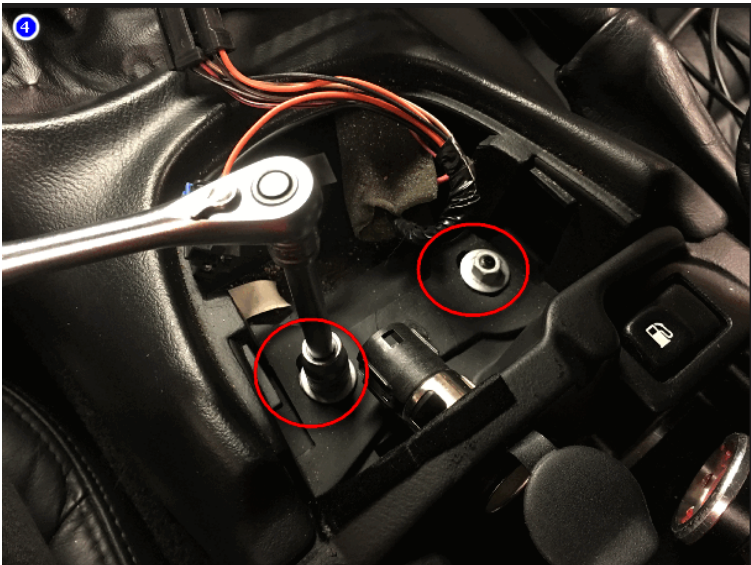
Flip the Traction control switch cover up



Remove the TC connector and the plug with 12 volt supply to the cigarette lighter in the console



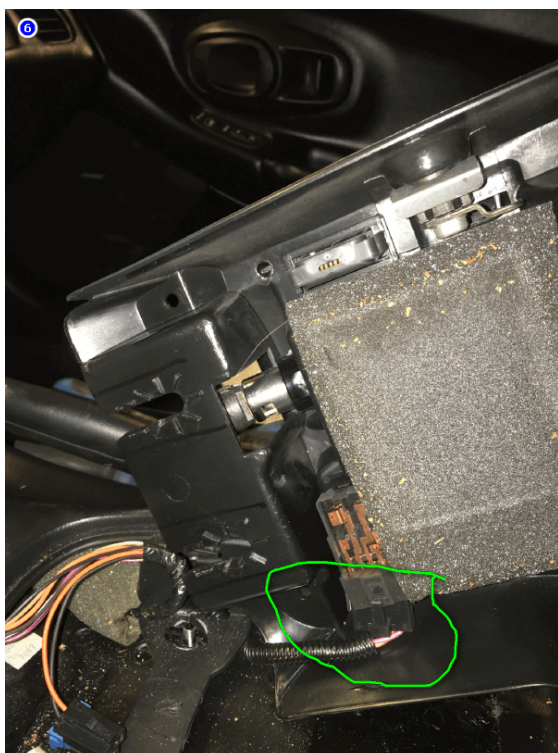
Remove two 10mm nuts holding rear part of the console



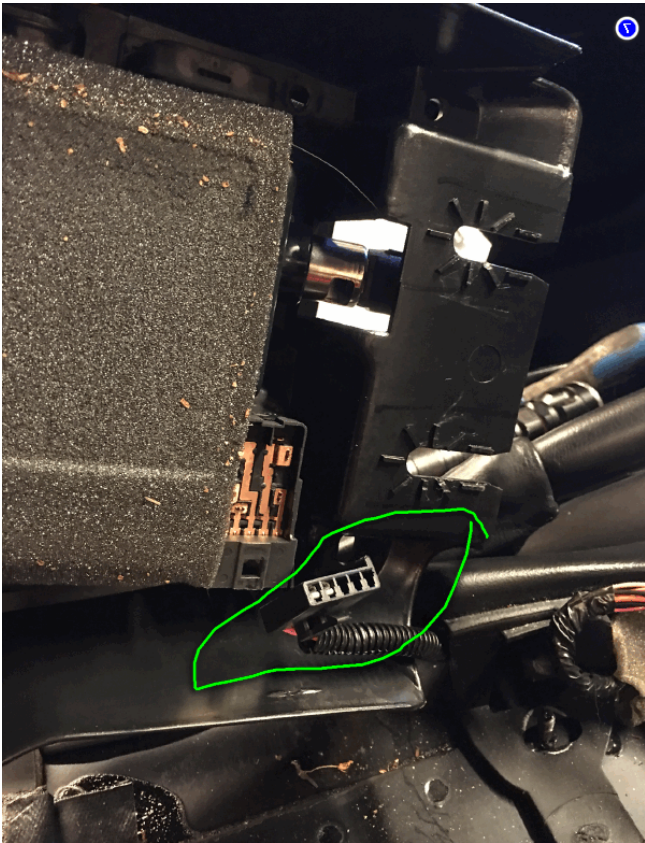
Pull rear part of the console backwards and up to release it .



Twist carefully front part of the console like this and disconnect the connector for the gasfuel door open switch .



Like this



Remove torx on the left side of the cigaret lighter



Remove ashtray like this



Remove torx screw hidden behind the ashtray

Carefully remove cover in front of the cabin temp sensor



Remove torx behind this cover



Insert the ignition key and switch ignition key (with BATTERY DISCONNECTED) and pull the gear selector in back position .



This enable you to lift the console upwards in the rear direction and above the gear selector.



Don't forget to disconnect power to the cigarette lighter on the way <:o)

