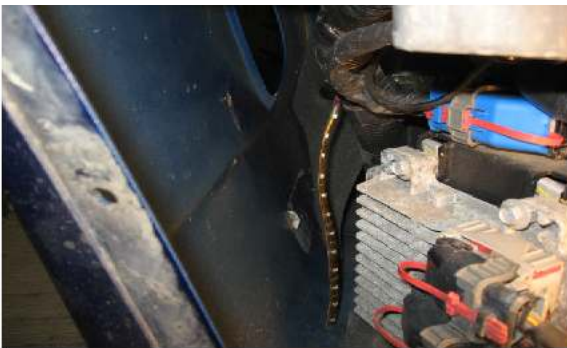




String long led wire across the cowl. Remove cowl weatherstrip. Using electrical tape, secure wire to the cowl and replace the weatherstrip to conceal the wiring.



This shows the wire taped to the cowl and the weatherstrip going back in place.



Route pass. side leds behind battery and drop into the cove area.



Clean mounting area with alcohol. Position led strip centered in cove opening and attach. Attaches to inner side of fender behind the lip.



On the drives side there is a slot in the cowl lip to route the wire and drop the led strip into the cove area. Attach the cove strip in the same manner as the pass. side.



Drivers side led strip attached to inner side of fender facing the shield area. Reinstall shields if removed.  
Helpful Hint: Lift edges of adhesive pads before installing shields so you can easily grab and remove backing.

Test function of led cove lights. Reinstall all cove shields and inner fender panels. Install front wheels and torque to 100 ft lbs. Email any questions to [nascar57@comcast.net](mailto:nascar57@comcast.net).