

# C6 COVE LIGHTS

This led cove kit can be installed without removing the inner cove shield. The shield has openings to maneuver the strips in place. The brightness of the leds can be enhanced by removing and painting the shield the same color as the leds. The leds will reflect off the shield for an enhance effect.

## SUGGESTED TOOLS    Extendable magnet

Wheel removal tools    10&13mm sockets and extensions    7mm wrench    electrical tape    flat screwdriver  
wire cutting pliers    scraper or razor blades    alcohol pads    Protective Tape    Optional: Paint for cove shields



Jack up front of vehicle and support with jackstands.  
Using wire pliers or equivalent pull head of retainer out  
and remove retainers holding fender panel in place



Tie back inner panel to allow access to cove area. If  
removing cove shields, reach through here with a scraper to  
detach front of shield. They are held on with adhesive pads.



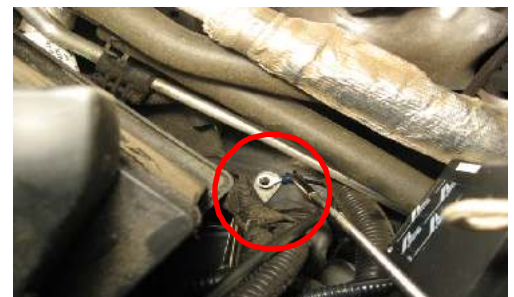
If removing the cove shield for painting, these are the 2  
7mm screws that need to be removed. Open the door  
slightly, tape the paint for protection and remove screws.



Shield is removed for painting. Replace adhesive pads  
supplied in kit for re-attaching. Paint shield desired color.  
Install led strips before replacing shield.



Open underhood fuse box and locate positive terminal.  
Attach controll box positive lead with supplied nut and  
washer. Place led box behind fuse box and attach with  
adhesive pad.



Next connect negative led box lead. Look directly below  
battery along the frame rail and locate the ground bolt.  
Use supplied nut and washer to connect. An extra nut is  
provided in case you drop one. A extendable magnet is  
helpfull.