

INSTALLING C6 GAGE CLUSTER FACES

The gauge company's instructions are [here](#).

NICE PACKAGING AND CLEAR INSTRUCTIONS READ THEM

BE CAREFUL MY FACES WERE NOT IN THE CORRECT SPOTS
ON THE PACKING SO CHECK PRIOR TO ASSUMING AND
PICKING UP THE WRONG FACE

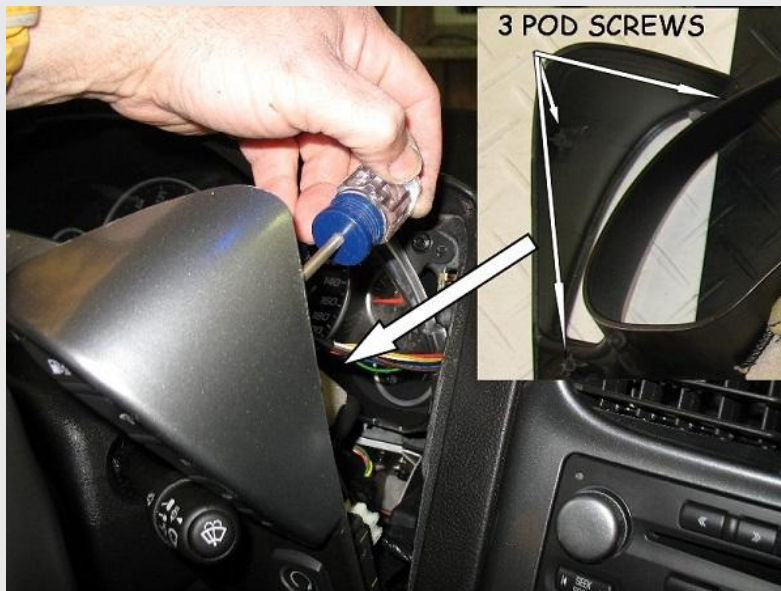


Using a pry tool or a butter knife you need to release the bottom of the pod surround.





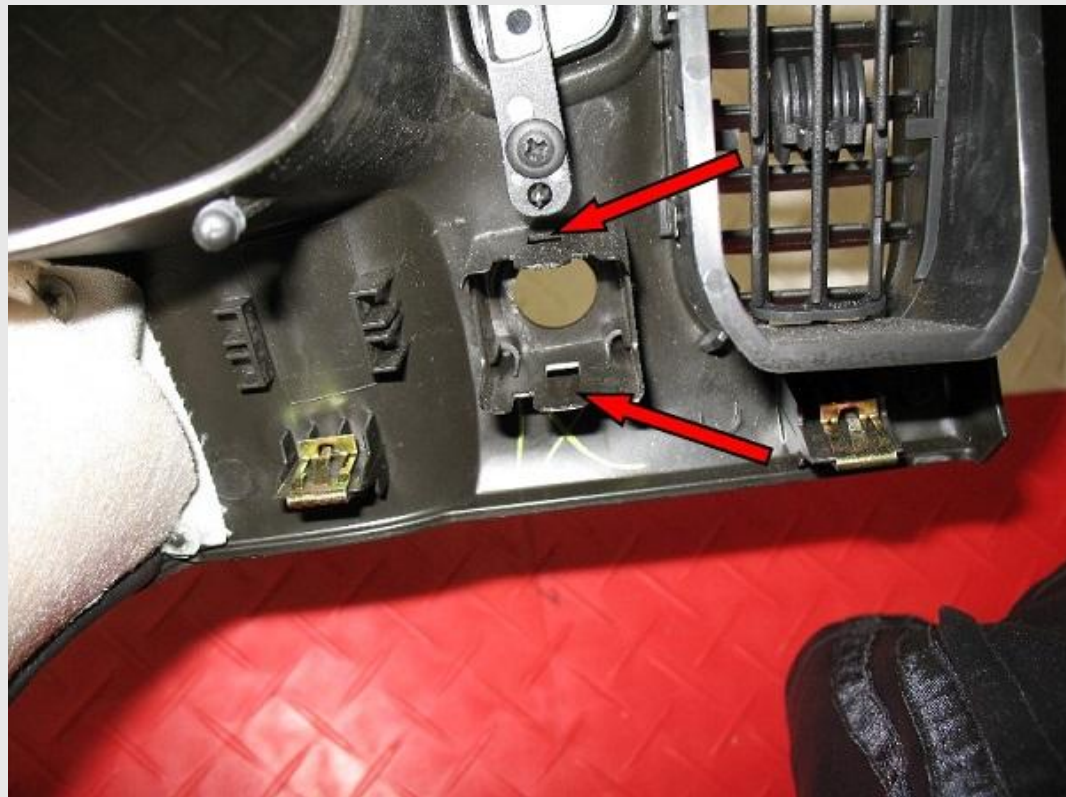
My trick to remove the three screws holding the pod using a stubby Phillips. I think this is much easier than trying to unclip the pod connector (the release is under the connector). Once the pod is in your hand it's simple to unclip the connector. Reinstall the pods in the surround and on reinstall it's simple to plug back in the connectors.



Release the ignition switch either by unplugging it (green arrow) or releasing the side tabs (red arrows)
you will also need to remove the sensor located below it to the left, it just pops off.



You also need to remove or unplug the dimmer control, you can see the release points in this picture.



Once the surround is off you can see all the mounting clips (the right pod has been removed). Make sure they did not get left in the dash, if so re-install them on the surround.

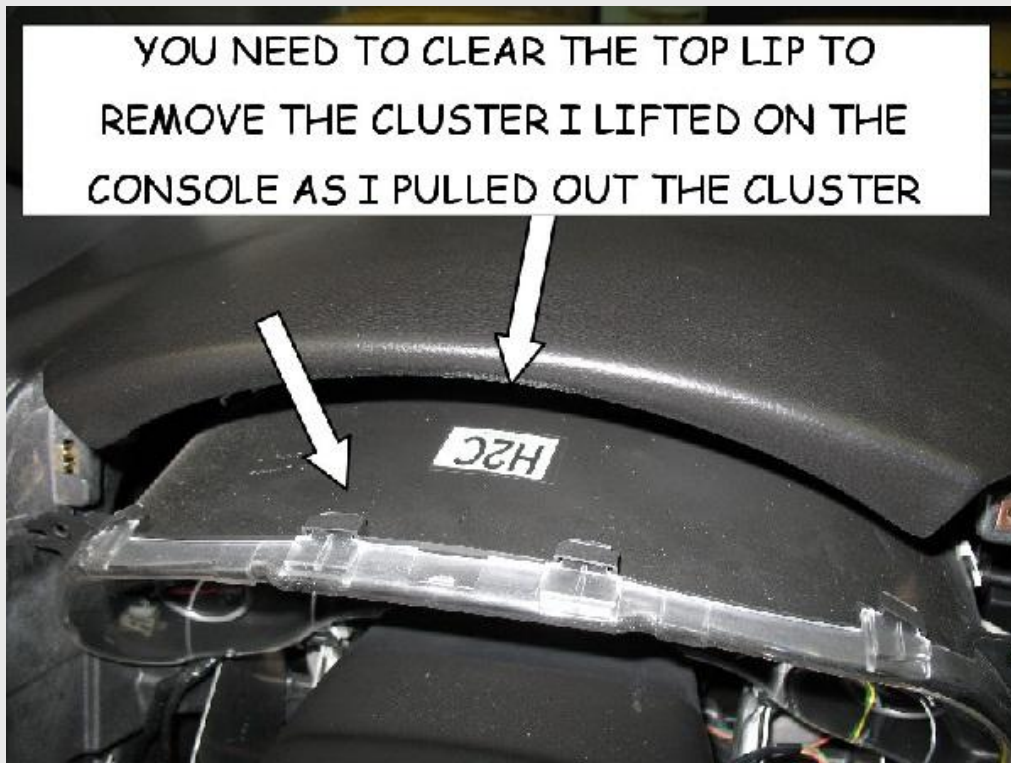


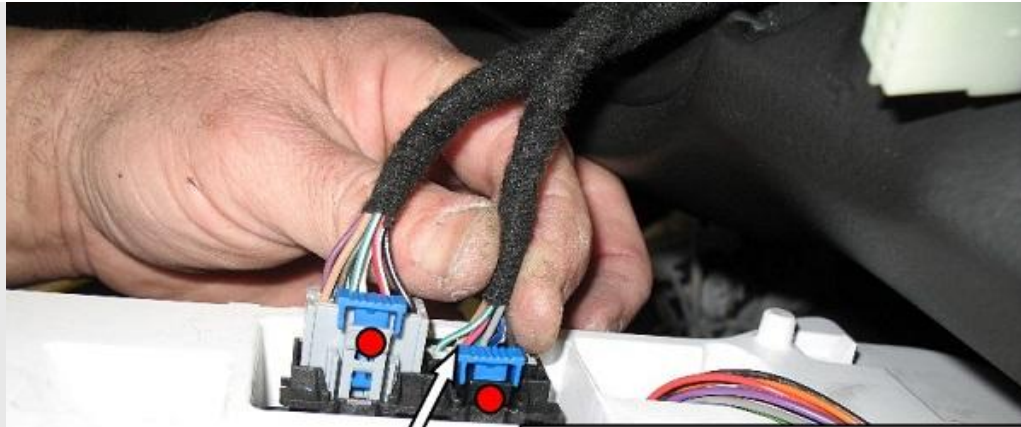
Remove the cluster, the white X marks the 4 screws.





YOU NEED TO CLEAR THE TOP LIP TO REMOVE THE CLUSTER I LIFTED ON THE CONSOLE AS I PULLED OUT THE CLUSTER





YOU NEED TO RELEASE
THE BLUE LOCKS 1ST BY
LIFTING THEM UP

THEN PRESS IN THE
RELEASE TAB
INDICATED WITH THE
RED DOT TO PULL OUT
THE CONNECTOR

I REMOVED THE LENS AND THE BLACK FACE AT THE SAME
TIME BY RELEASING ALL THE BLACK TABS. TWO PEOPLE
HELP AND ONCE YOU GET RELEASED AND I STUCK A
NICKEL IN THE GAP TO HOLD IT OPEN





I ROTATED THE NEEDLES COUNTER CLOCK WISE 5 TIMES AS INDICATED IN THE INSTRUCTIONS AND AFTER 5 TIMES I APPLIED UPWARD FORCE AS I ROTATED AND THEY JUST CAME OFF, NOTICE WHERE I HELD THE NEEDLE TO ROTATE IT AND LIFT



NOTE ON THE TACH NEEDLE YOU NEED TO GENTLY LIFT THE TIP OF THE NEEDLE TO CLEAR THE SPEEDO AS YOU ROTATE IT

Follow the instruction included on setting the gauges and the final needle height (look at the handle end of the tool, the correct height is the little step).



Now reverse the disassembly and put it back together!

