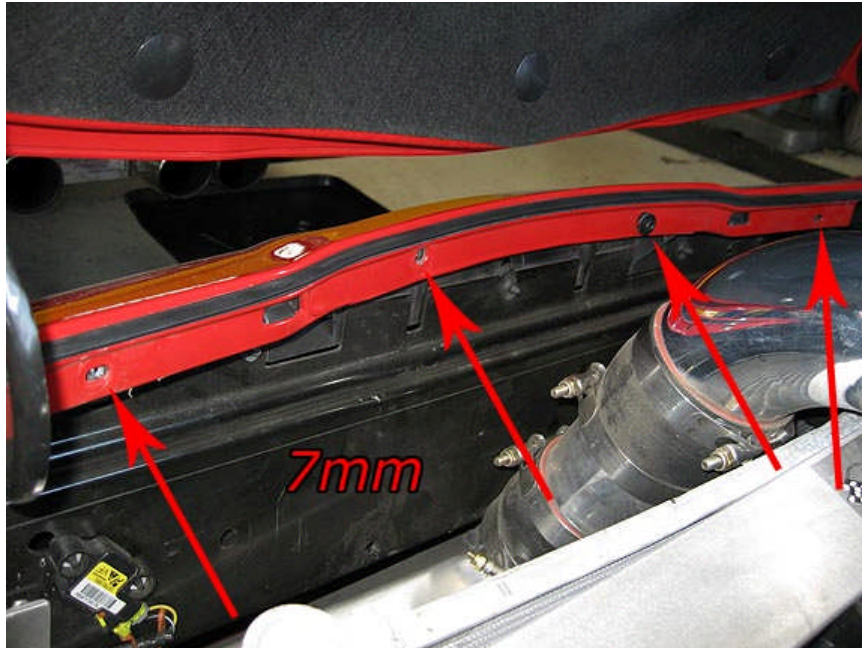


REMOVING THE C6 FRONT FASCIA

1. Remove front wheels.
2. Remove (4) 7mm screws from the top of the fascia.



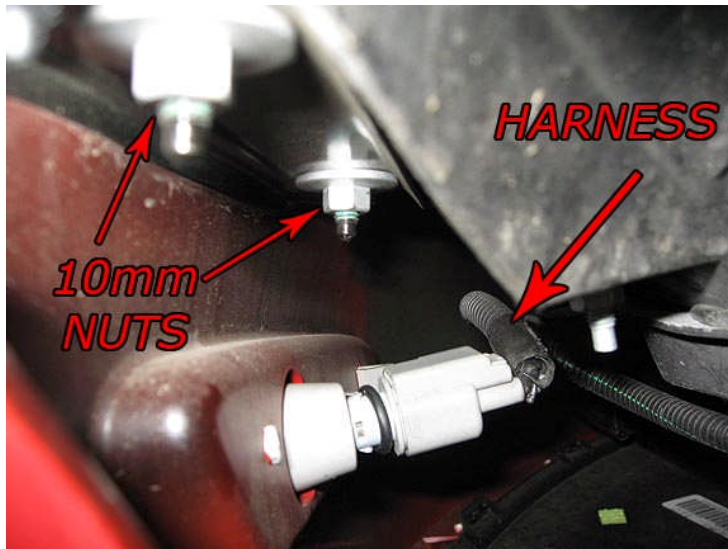
(REMOVE THESE 4 7mm SCREWS)

3. Remove (5) T-15 screws on wheel well (Z06, Base C6 will have (5) plastic push pins).



(REMOVE THESE 5 SCREWS OR PLASTIC PUSH PINS)

4. Pull back wheel well and unplug side marker light by twisting and pulling the harness.
5. Remove the (2) 10mm nuts.



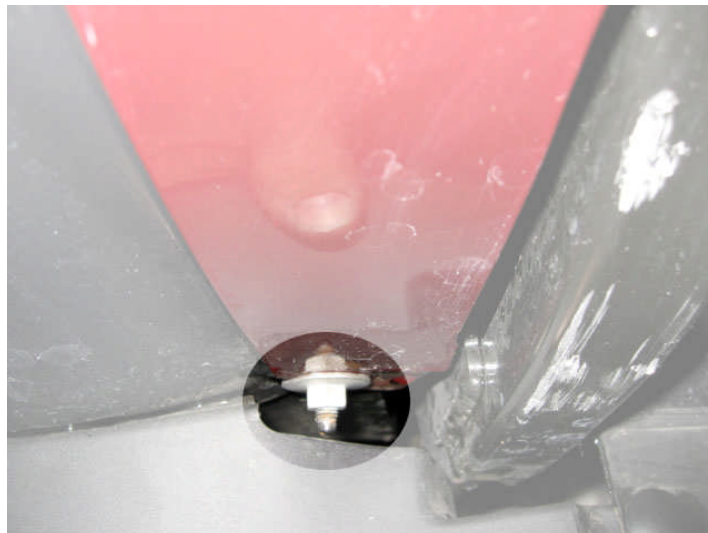
(UNDO SIDE MARKER HARNESS AND REMOVE TWO 10mm BOLTS)

6. Unplug the fog light harness by pulling up on the tab and pulling the harness down.



(UNDO FOG LIGHT HARESS)

7. Remove (2) 10mm nuts and (5) 7mm screws from under the front fascia.

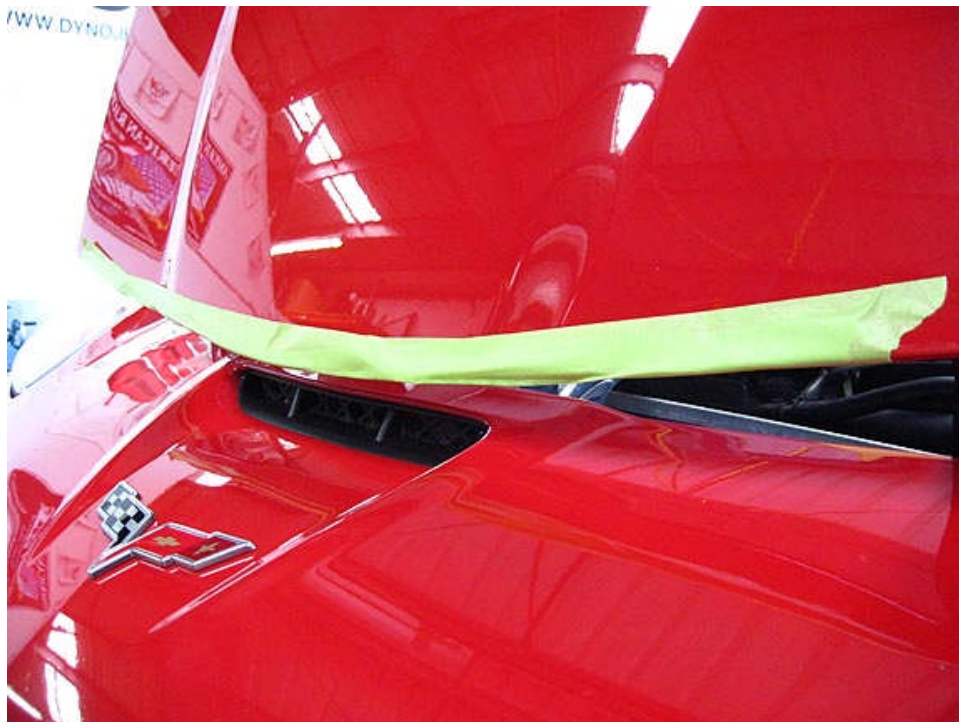


(ONE OF TWO 10mm BOLTS)



(7mm SCREWS IN BOTTOM OF FASCIA)

8. If your hood is still on, use masking tape to protect the front nose of the hood.



(MASKING TAPE APPLIED TO HOOD)

9. Pull up on corners of the front fascia until the clip “pops.”



(PULL UP UNTIL THE PANEL POPS OUT)

10. Reinstall parts in the opposite order.

A & A Corvette Performance, Ltd.
477-A Lambert Street
Oxnard, CA 93036
Local: (805) 278-4107
Toll Free: (888) VETTEPRO
www.aacorvette.com