

Z06 Rear Muffler and Butterfly Valve Vacuum Assembly Installation

Part II: Z06 Muffler Vacuum Parts Installation (author: codename Bil Doe)

Numbers after Part # refer to their relative numerical locations in the exploded view shown below (next page).

GM Z06 Exhaust Valve Parts List:

15973049: #20 - Vacuum tank. Vacuum reservoir to keep butterflies closed at high engine rpm.

15782803: #13 - Vacuum hose. This hose line runs from the vacuum solenoid to the mufflers.

15782802: #18/#19 - Vacuum solenoid. This comes as one piece with attached vacuum line.

89046833: Connector for Vacuum solenoid. Expensive but worth it for waterproof seal and cleanliness

15782801: #9 - Vacuum Pipe. Good for its proprietary connector to vacuum solenoid connection and to run 1/2 way up the center tunnel before splicing.

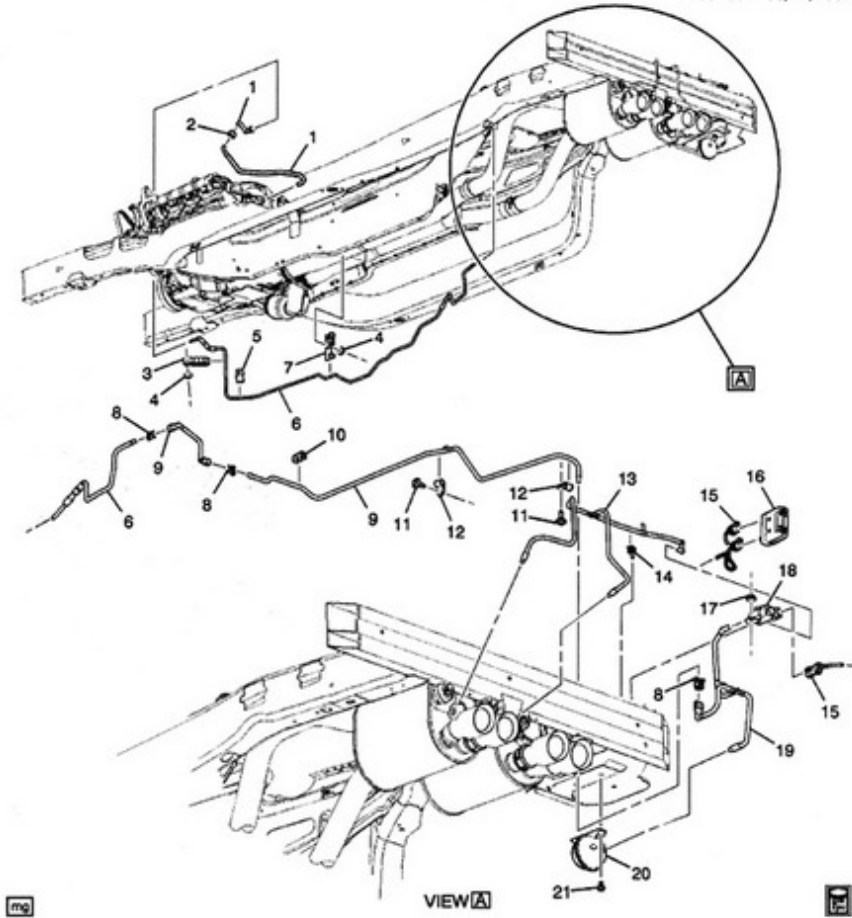
15237510 - F55 console switch.

88988116 - F55 female connector plug. Dealers don't have a picture of this plug, but it is the right one. If you don't want to buy it, you can cut the one out of your wiring harness that is already in your center console and not being used.

Z06 Rear Muffler and Butterfly Valve Vacuum Assembly Installation

Make: CHEVROLET, Year: 06, Model: Corvette

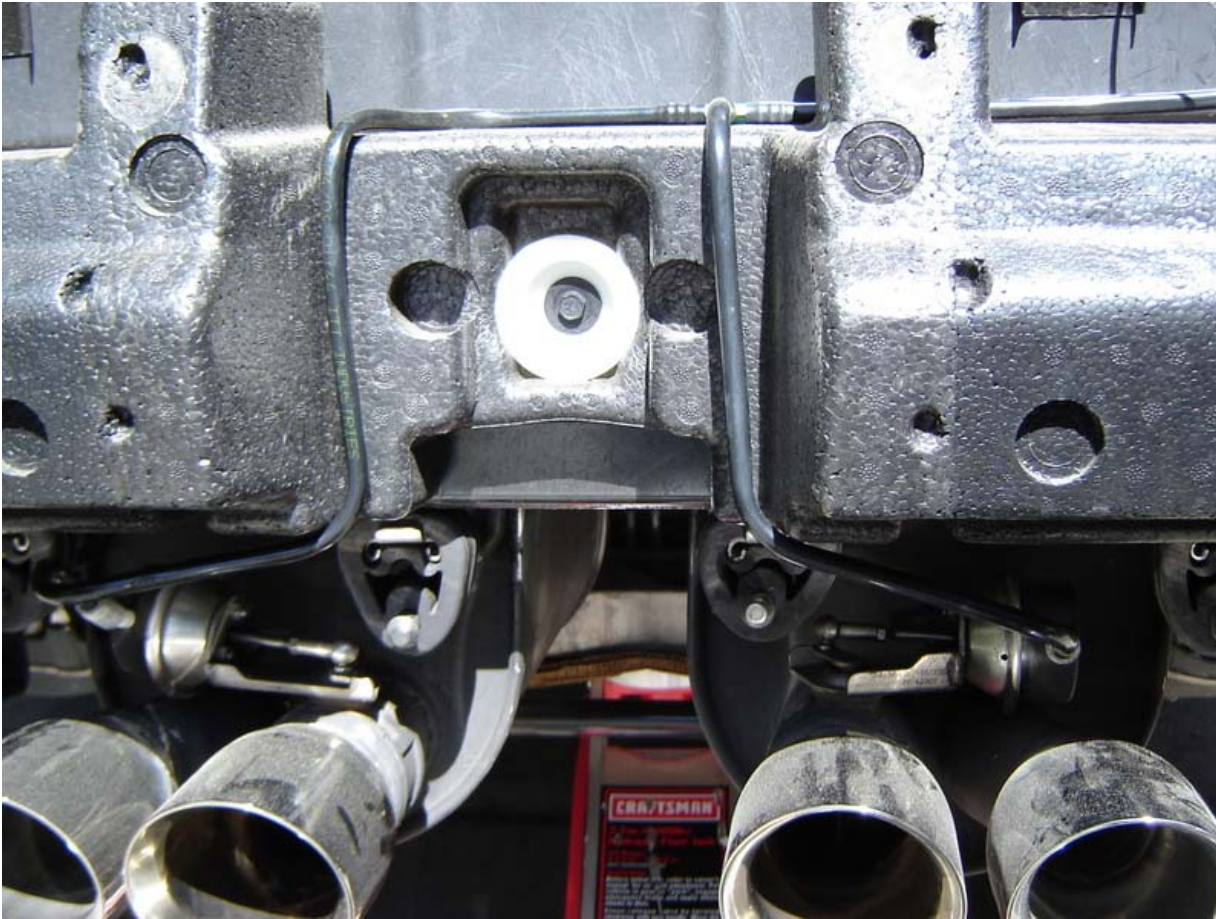
1Y03-097 08/24/2005



Copyright 2005 General Motors Corporation. All rights reserved.

ProQuest Automotive EPC

Z06 Rear Muffler and Butterfly Valve Vacuum Assembly Installation



This includes all necessary connectors and wiring. Here is the install of the vacuum components behind the bumper. I will follow up with the switch wiring and running vacuum lines to the engine later on.

Because the C6 and Z06 are almost identical, nearly all the parts are plug-and-play and fit nicely. The Z06 mufflers use the same hangers as the stock C6. Above, you can see the vacuum line running from the butterfly actuators to the solenoid. If you look closely, you can see the vacuum reservoir tank mounted underneath on the right side. Start by connecting the vacuum lines to the actuators. Because they are preformed, they will contour to the bumper and give you an idea of where to place the solenoid.

Z06 Rear Muffler and Butterfly Valve Vacuum Assembly Installation



Here's a higher angle showing how the lines run to where the solenoid should be placed.

Z06 Rear Muffler and Butterfly Valve Vacuum Assembly Installation



Next, connect the vacuum solenoid to the line coming from the mufflers. You will see a hole pre-drilled in the bumper which lines up with the mounting bracket for the solenoid. You can widen this hole slightly to use a #14 screw with washer and screw the solenoid firmly to the bumper.

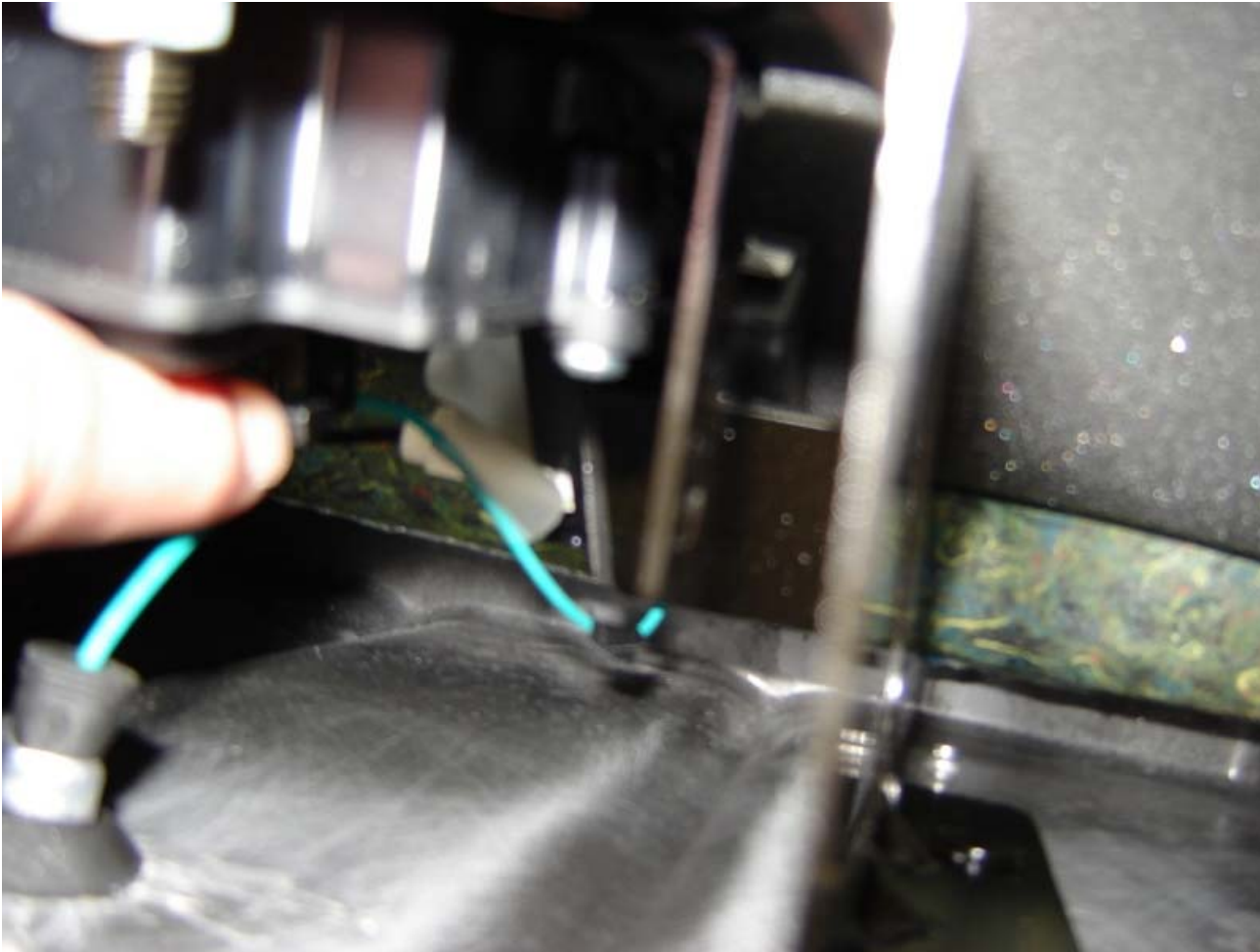
Z06 Rear Muffler and Butterfly Valve Vacuum Assembly Installation



Looking again at the full bumper picture, there are two wires higher up going through the trunk (the **red** on the left and the **black** on the right). Peel back the gooey tape holding the black wire down and you will see a hole predrilled into the trunk area. With the carpet still pulled away (from the step above where you disconnected the trunk latch wire), put a new spool of 16G wire laying free in that space. Feed enough of the wire through the hole under the gooey tape to reach the solenoid connector.

Leave the rest of the spool in there. You will be eventually running this under the carpet to the passenger foot well.

Z06 Rear Muffler and Butterfly Valve Vacuum Assembly Installation



Spool of wire can be left temporarily to the right of the trunk release (anywhere to the right of where I'm pointing).

Z06 Rear Muffler and Butterfly Valve Vacuum Assembly Installation



Once the solenoid is mounted, insert its connector. Use the stud on ground strap behind it is bolted to as a ground. Splice the hot lead to the wire you fed through the hole in the trunk under the gooey tape. The hot will be the top wire when the connector is inserted into the solenoid. Don't worry; it's also labeled with a "+" on the solenoid.

Z06 Rear Muffler and Butterfly Valve Vacuum Assembly Installation



Once mounted, the solenoid will have a vacuum line that hangs down below the bumper. This splits into two lines, one with a green locking connector and one with a rubber end.

- Plug the vacuum reservoir tank into the rubber end and it will line itself up for where you should mount it.
- Mark and drill two holes on the underside of the body. The location is on the bottom of the right storage well if you were wondering where it lined up with trunk space.

Z06 Rear Muffler and Butterfly Valve Vacuum Assembly Installation



A second shot of the vacuum reservoir tank and the green connector you will leave temporarily hanging. Later I will post how to run from this connector to the vacuum off the brake booster with the vacuum pipe [15782801](#).