

 CHEVROLET CORVETTE ZR1 2019

ZR1





**EVERY GREAT STORY DEMANDS A HERO.**

The Chevrolet Corvette ZR1 is back. Long live the king.



## A 755-HORSEPOWER LT5 SUPERCHARGED V8

gives the new Corvette ZR1 coupe and convertible a performance bandwidth in line with a GT race car and the civilization of an exotic touring car. Like the great Corvette models of the past, ZR1 introduces a host of sophisticated technologies, including a new Dual Fuel Injection system, a supercharger that is 52% larger than its predecessor and a front underwing, all of which are Corvette firsts.



Corvette ZR1 coupe.  
Shown in Watkins Glen  
Gray Metallic with  
available features.





**EVEN THE STRONGEST  
HEADWINDS OBEY IT.**

Comprehensive air management technologies help enable awe-inspiring breathing, braking and cornering.



Corvette ZR1 coupe.  
Shown in Watkins Glen  
Gray Metallic with  
available features.







ZR1  
CONVERTIBLE

## 200 MPH PLUS ON THE RACETRACK IS ONE WAY TO GET SOME AIR.


Roadster enthusiasts, your voice has been heard.



Corvette ZR1 convertible. Shown in Sebring Orange Tintcoat (extra-cost color) with available features including the ZR1 Sebring Orange Design Package.

**BLUR THE HEAVENS AT WILL.** The new ZR1 convertible is a no-compromise supercar. Thanks to a strong structure, the suspension tuning between coupe and convertible models is identical. Given its immense power and its handling prowess, this car could be the ultimate example of what Corvette is all about.





**ZR1  
SEBRING ORANGE  
DESIGN PACKAGE**

Corvette ZR1 coupe. Shown in Sebring Orange Tintcoat (extra-cost color) with available features including the ZR1 Sebring Orange Design Package.



The ZR1 Sebring Orange Design Package includes a carbon-fiber and sueded microfiber-wrapped steering wheel, Orange stitching and seat belts, Bronze-tinted aluminum trim, Competition Sport bucket seats, and floor mats with a ZR1 logo.



ZR1  
NEW-GENERATION  
SUPERCHARGER



**INSIDE, IT GENERATES  
A HURRICANE.**

Thanks to a massive new supercharger with 52% more capacity than its predecessor.



## ZR1 LT5 ENGINE

FILLING THE ENGINE BAY OF ZR1 IS A 755-HORSEPOWER 6.2L LT5 SUPERCHARGED V8. THE LT5 NAME IS A NOD TO THE FOURTH-GENERATION CORVETTE ZR1 POWERPLANT. THE NEW ENGINE IS TWICE AS POWERFUL AS THE ORIGINAL LT5 OF 1990, THANKS TO A VOLUMINOUS EATON® SUPERCHARGER AND A HUGE 95 MM THROTTLE BODY FOR AMAZING BREATHING ABILITY. TO PROVIDE OPTIMUM FUEL DISTRIBUTION, THE LT5 IS ENGINEERED WITH A DUAL FUEL INJECTION SYSTEM EMPLOYING BOTH DIRECT INJECTION AND PORT FUEL INJECTION.

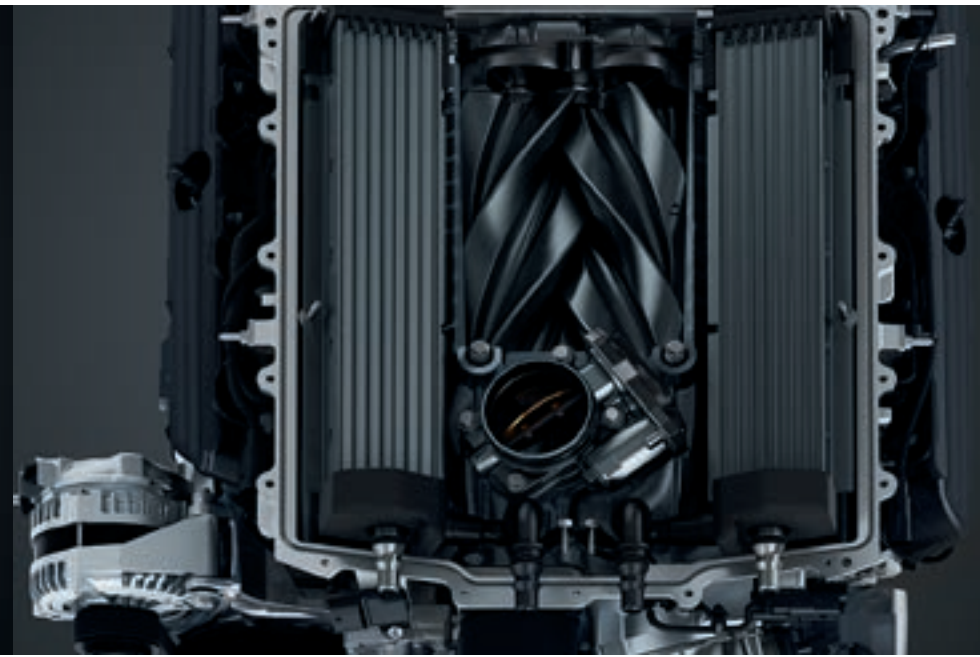
### HIGH-VOLUME EATON SUPERCHARGER.

The LT5 supercharger is almost three inches taller than its predecessor. Larger, high-flow efficiency rotors incorporate an optimized high-twist, 4-lobe design. These 170-degree twist lobes help maintain peak efficiency at higher speeds and pressure ratios. And because the supercharger is taller, it necessitates a special carbon-fiber halo hood that closes around the unit.

**ROBUST COOLING CAPABILITY.** Power is greatly enhanced by extra cooling with a total of 13 different heat exchangers. Four new radiators have been added, including a low-temperature radiator and two outboard radiators for the supercharger circuit. The remaining two are outboard radiators used in the engine cooling circuit. Like Z06, there is also a lay down cooler for power steering, a differential oil cooler and a transmission cooling module.



755-HORSEPOWER  
LT5 V8 ENGINE.



EATON SUPERCHARGER  
HAS 52% GREATER  
CAPACITY THAN ITS  
PREDECESSOR.



**DUAL FUEL INJECTION SYSTEM BOOSTS POWER.**

Ultra-high horsepower engines require a steady diet of air and fuel. Most of the time, ZR1 will be running strictly using Direct Injection (DI), which is operated by the engine control module. As the need for fuel increases based on rpm and load, the secondary module (called the Fuel Injector

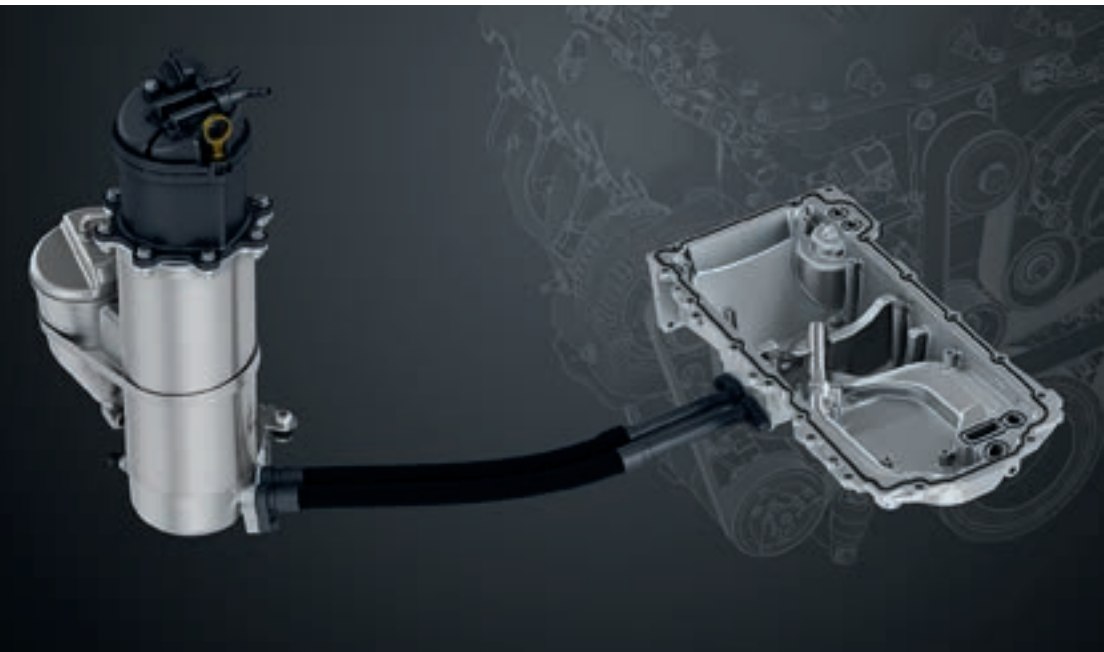
Control Module or FICM) will start opening up the port injectors, allowing them to spray and supplement DI (the port injectors spray at lower fuel pressure than the direct injectors). This GM-first system was created specifically to deliver the fuel required by the new LT5 engine.

**PRECISE OIL DELIVERY VIA DRY SUMP.**

ZR1 employs a dry-sump oil system that uses pressurized Mobil 1™ oil from an external reservoir to prevent oil starvation in high-speed corners.



DUAL FUEL INJECTION SYSTEM INCLUDES DIRECT INJECTION AND PORT FUEL INJECTION.



DRY-SUMP OIL SYSTEM HAS AN EXTERNAL RESERVOIR.



## ZR1 ENGINEERING HIGHLIGHTS

ZR1 IS DESIGNED MUCH LIKE A RACE CAR. THAT MEANS THAT RATHER THAN FIGHTING THE AIR, THE BODY AND CHASSIS ARE DESIGNED TO USE WHAT THE ELEMENTS GIVE THEM, FOR BRAKING, COOLING, DOWNFORCE, ENGINE BREATHING AND MORE.

### ZTK TRACK PERFORMANCE PACKAGE.

The available ZTK Track Performance Package was developed as the ultimate Corvette track setup. It adds a high rear wing, carbon-fiber end caps to the front splitter, Michelin® Pilot® Sport Cup 2 summer-only tires<sup>1</sup> and specific Magnetic Selective Ride Control™ tuning.

**REAR BRAKE COOLING DUCTS.** Cooling the giant Brembo® carbon ceramic brakes with multi-piston calipers are special vents just ahead of the rear tires. They are designed to provide a constant flow of air to the brakes to maintain effectiveness under demanding track conditions.

**LEFT AND RIGHT FRONT AIR INLETS.** ZR1 was engineered from the beginning to be a deep-breathing car. In an effort to get more air into the engine, new air inlets have been created. They provide cooling air to the auxiliary low-temperature radiator and the auxiliary primary radiator.

**CENTER AIR INLET.** This main inlet provides engine breathing and supplies air to the low-temperature radiator, AC condenser, primary radiator, engine cooling fan and auxiliary transmission oil cooler on automatic models.

**CARBON-FIBER COMPONENTS.** Showcasing the new LT5 supercharged V8 is an available carbon-fiber engine cover that

sits proudly surrounded by the carbon-fiber halo hood. Other carbon-fiber elements on ZR1 include a front splitter, a high rear wing, rockers and wickerbills, front fender bezels, quarter vents and the roof.

**FRONT SPLITTER.** The front splitter on ZR1 acts like a wedge that forces the high-pressure air upward where it builds up around the bumper and migrates up and over the car. The high-speed, low-pressure air passes underneath the car. Combined with the high-pressure air that is passing over the car, lift is reduced, resulting in a net positive downforce. In addition to the front underwing, this splitter gives the front of ZR1 more traction as it hugs the ground.

Corvette ZR1 coupe.  
Shown in Watkins Glen  
Gray Metallic with  
available ZTK Track  
Performance Package  
and other available  
features.



- 1 CARBON-FIBER TWO-WAY ADJUSTABLE HIGH REAR WING WITH AVAILABLE ZTK TRACK PERFORMANCE PACKAGE
- 2 REAR BRAKE COOLING DUCTS
- 3 LEFT AND RIGHT FRONT AIR INLETS
- 4 CARBON-FIBER HALO HOOD AND ENGINE COVER
- 5 CENTER AIR INLET
- 6 UNIQUE CARBON-FIBER FRONT SPLITTER

<sup>1</sup> Driving on wet roads, in heavy rain, or through standing water with competition-oriented tires may cause hydroplaning and loss of control. Use extreme caution and drive slowly on wet roads. Do not use summer-only tires in winter conditions, as it would adversely affect vehicle safety, performance and durability. Use only GM-approved tire and wheel combinations. Unapproved combinations may change the vehicle's performance characteristics. For important tire and wheel information, go to [my.chevrolet.com/learnAbout/chevrolettires](http://my.chevrolet.com/learnAbout/chevrolettires) or see your dealer.



ZR1  
AERODYNAMICS  
AND DOWNFORCE

## 950 POUNDS OF TOTAL DOWNFORCE AT SPEED.

With the available ZTK Track Performance Package for high-velocity handling and cornering.





## ZR1 AERODYNAMICS AND DOWNFORCE

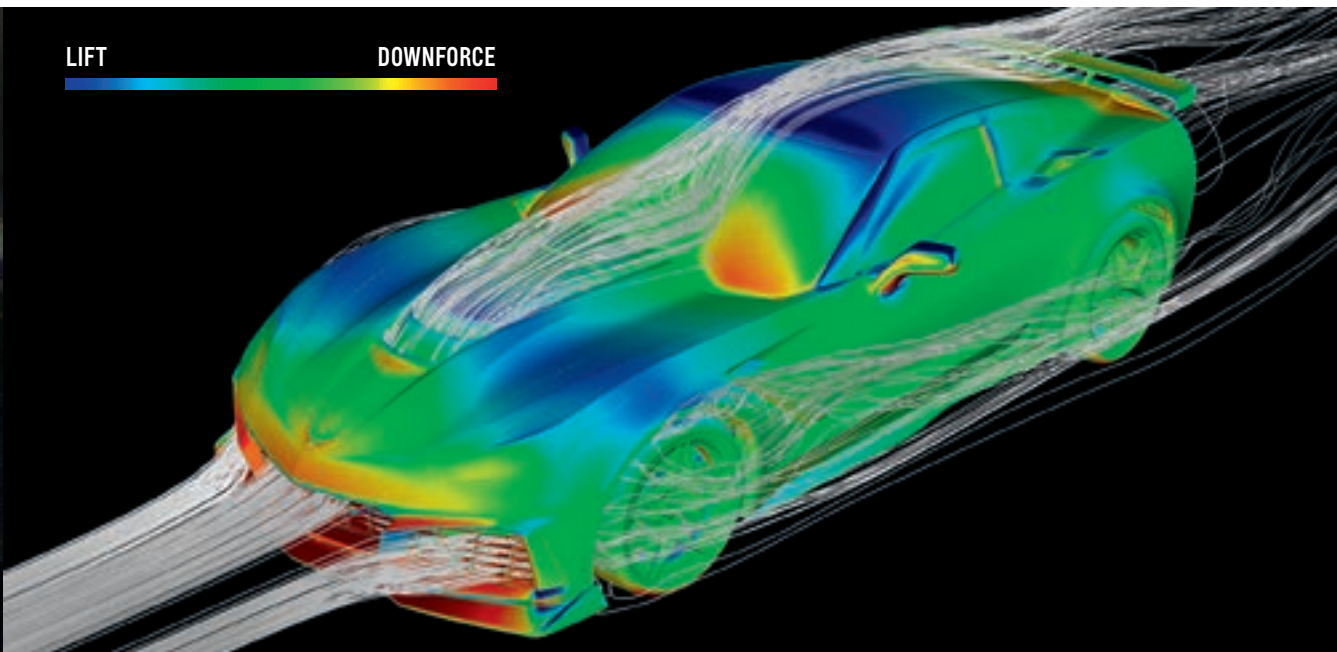
ZR1 OFFERS YOU A CHOICE OF TWO AERODYNAMIC CONFIGURATIONS. THE FASTEST IN TERMS OF TOP SPEED IS THE STANDARD ZR1, WHICH INCLUDES A CARBON-FIBER FRONT SPLITTER AND LOW REAR WING TO MINIMIZE DRAG. THIS ZR1 WOULD MAKE THE ULTIMATE AUTOBAHN CAR. IF YOUR TASTES GO MORE TOWARD HIGH-SPEED HANDLING AND GRIP, GO WITH THE AVAILABLE ZTK TRACK PERFORMANCE PACKAGE, WHICH FEATURES A TWO-WAY ADJUSTABLE HIGH REAR WING WITH STANCHIONS MOUNTED DIRECTLY TO THE CHASSIS FOR MAXIMUM EFFECTIVENESS.

**LOW WING OFFERS BEST TOP SPEED.** While the high-wing ZTK Track Performance Package is lightning fast on a road course, the low rear wing provides a faster top-end car with 20% less drag than the high wing. Low-wing versions also incorporate tire deflectors to help properly balance the car.

**FAST LAPS: ZTK TRACK PERFORMANCE PACKAGE.** In addition to the adjustable two-position high wing, the available ZTK Track Performance Package adds specific chassis tuning and carbon-fiber end caps to the front splitter on coupe models. It also provides spring rates that are 30% higher in the front and 13% higher in the rear compared to the standard ZR1. The finishing touch is a set of Michelin® Pilot® Sport Cup 2 tires<sup>1</sup> that are designed for ideal warm and dry track conditions.



ADDITIONAL AIR INLETS ABOVE THE SPLITTER PROVIDE ENGINE COOLING AND MORE.



AIR IS DIRECTED TO FLOW IN, OVER AND AROUND THE CAR TO PROVIDE BREATHING, COOLING AND DOWNFORCE.

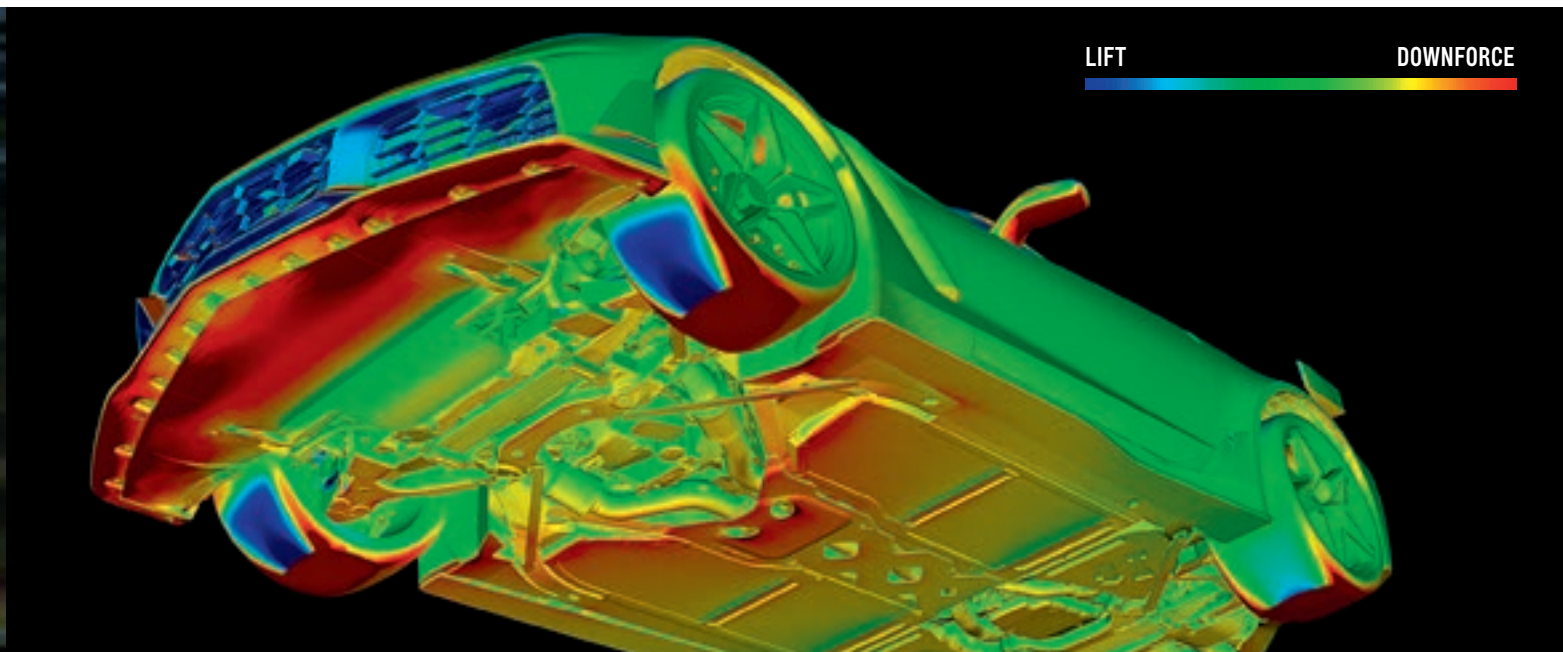
<sup>1</sup> Driving on wet roads, in heavy rain, or through standing water with competition-oriented tires may cause hydroplaning and loss of control. Use extreme caution and drive slowly on wet roads. Do not use summer-only tires in winter conditions, as it would adversely affect vehicle safety, performance and durability. Use only GM-approved tire and wheel combinations. Unapproved combinations may change the vehicle's performance characteristics. For important tire and wheel information, go to [my.chevrolet.com/learnAbout/chevrolettires](http://my.chevrolet.com/learnAbout/chevrolettires) or see your dealer.



#### ROLLING WIND TUNNEL DEVELOPMENT.

ZR1 was tested on a moving turntable inside the wind tunnel with different yaws and headwinds and at several different trim heights, all to better simulate real-world driving conditions. The results are dramatic. The standard ZR1, during everyday driving, incorporates 70% more downforce than a Z06 with CFZ ground effects, while ZR1 with the ZTK Track Performance Package incorporates about 60% more downforce (with the same level of drag) than the current Z06 with Z07 Performance Package.

**FRONT UNDERWING.** All ZR1 models incorporate a racing-derived front underwing, not visible from the exterior of the car. It offers the same downforce efficiency as the high rear wing and was developed by adding some curvature to the existing closeout panel. The underwing makes the entire front of the ZR1 a downforce control surface.



THE LOW REAR WING OFFERS LOWER DRAG THAN THE HIGH WING FOR BEST TOP SPEED.

THE RACING-DERIVED FRONT UNDERWING PROVIDES SIGNIFICANT DOWNFORCE COMPARABLE TO THE HIGH REAR WING.



## ZR1 CHASSIS

ZR1 STARTED WITH A LIGHT AND STRONG SEVENTH-GENERATION ARCHITECTURE THAT DID NOT REQUIRE ANY ADDITIONAL REINFORCEMENT. THE ENGINEERING TEAM UTILIZED ALGORITHMS IN THE MAGNETIC SELECTIVE RIDE CONTROL AND STEERING CALIBRATIONS TO MAKE THE CAR FEEL LIGHT AND AGILE, MUCH LIKE GRAND SPORT.

**START WITH A GREAT CHASSIS.** The ZR1 platform includes Magnetic Selective Ride Control, Performance Traction Management, an Electronic Limited-Slip Differential (eLSD),

Brembo® carbon ceramic brakes and Michelin® Pilot® Super Sport tires! From an aero perspective, it includes a carbon-fiber front splitter and a low rear wing.

### SPRING AND SUSPENSION RATES.

The ZR1 chassis has the same spring and suspension rates as the standard Grand Sport and Z06. The new ZR1 also utilizes the same stabilizer bars, but has a completely different bushing package.

### STABILIZER BUSHINGS ADD CONFIDENCE.

The stabilizer bushings are utilized to fine-tune the Tire Lateral Load Transfer Distribution (TLLTD). This gives the standard ZR1 a very comfortable amount of understeer, which provides driver confidence on a twisty mountain road or the racetrack.

### MAGNETIC SELECTIVE RIDE CONTROL.

This technology with the available ZTK Track Performance Package has been programmed to achieve a “spot-on” driving feel. Magnetic Selective Ride Control “reads” the road every millisecond and changes damping in just 10 to 15 milliseconds in shocks filled with a magnetorheological fluid containing minute iron particles.

**STREET VERSUS TRACK.** The ZR1 standard chassis with the low rear wing is optimized for top speed, lower drag and touring. The available ZTK Track Performance Package is optimized for fast lap times on the track and better overall grip.



Corvette ZR1 coupe.  
Shown in Watkins  
Glen Gray Metallic  
with available ZTK  
Track Performance  
Package and other  
available features.

<sup>1</sup> Do not use summer-only tires in winter conditions, as it would adversely affect vehicle safety, performance and durability. Use only GM-approved tire and wheel combinations. Unapproved combinations may change the vehicle's performance characteristics. For important tire and wheel information, go to [my.chevrolet.com/learnAbout/chevrolettires](http://my.chevrolet.com/learnAbout/chevrolettires) or see your dealer.






ZR1 COCKPIT  
AND INTERIOR  
DESIGN

**MOMENT OF TRUTH.** That's the first time you strap yourself in and push the start button. ZR1 is available in two trim levels. The essential Corvette, 1ZR is well equipped for when you want to vigorously exercise your ZR1 on road or track. The highly contented 3ZR interior offers more luxury with a full suite of convenience features, including a Performance Data Recorder and Napa leather seating surfaces.

Corvette ZR1 coupe  
3ZR. Shown in  
Jet Black with  
available features.





**ZR1  
BY THE  
NUMBERS**

This is the highest-rated horsepower figure ever generated from a production Chevrolet small block V8 engine.

This is the test-track top speed for ZR1 coupe with the standard low-wing configuration that reduces drag for faster straight-line speed.

This is the g force registered from ZR1 on a circular skid pad, exceeding the force of gravity, which is 1 g.

This is the peak amount of twisting power delivered by the LT5 engine.

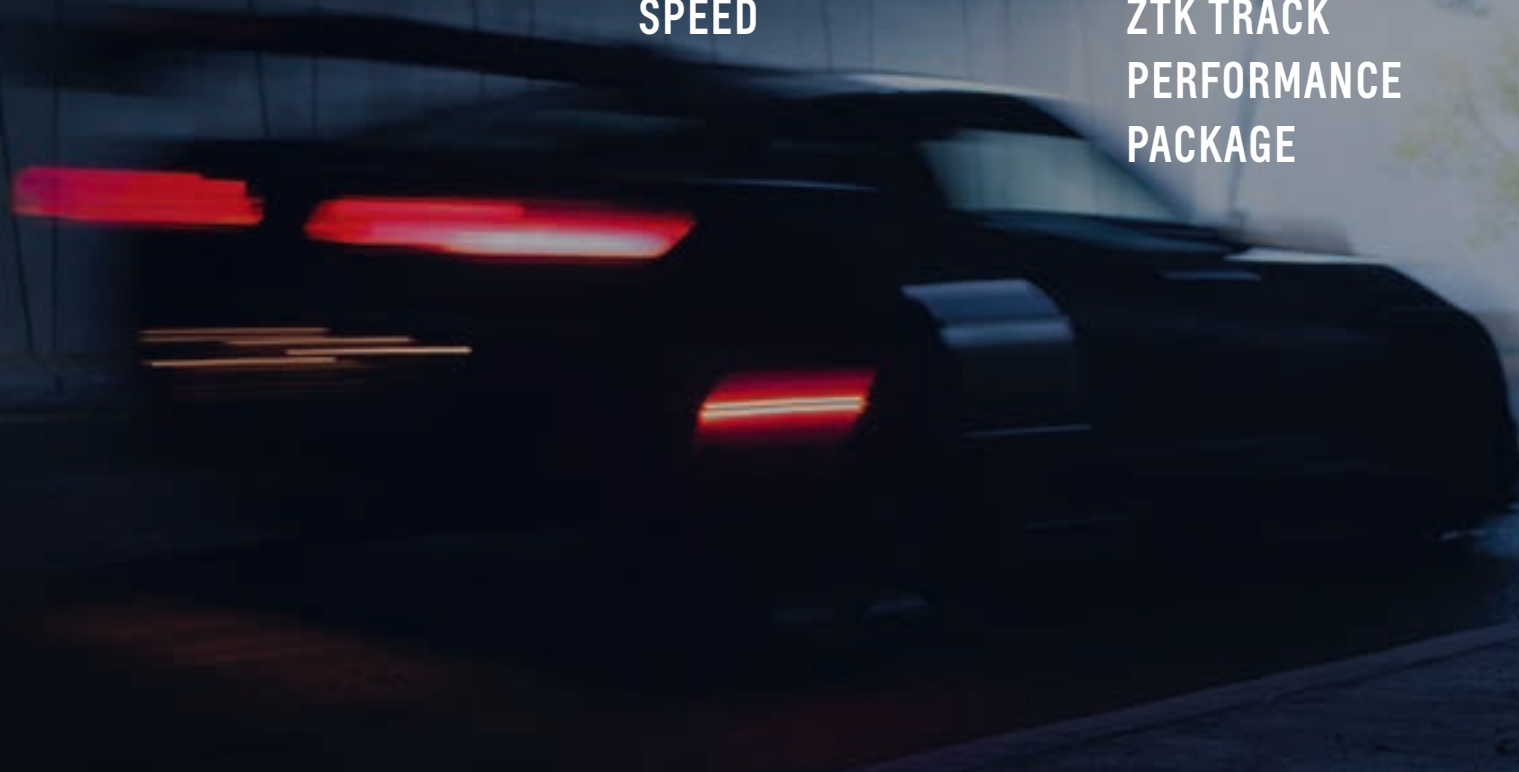
**755 212 1.2 715**

**HORSEPOWER @  
6300 RPM**

**MPH  
TOP  
SPEED**

**G FORCE  
WITH  
ZTK TRACK  
PERFORMANCE  
PACKAGE**

**LB.-FT. OF  
TORQUE @  
4400 RPM**





## PERFORMANCE



	ZR1
<b>ENGINE</b>	6.2L LT5 supercharged V8
<b>TYPE</b>	90-degree V8, aluminum; Variable Valve Timing, Direct Injection and Port Fuel Injection
<b>COMPRESSION RATIO</b>	10.0:1
<b>HORSEPOWER</b>	755 @ 6300 rpm
<b>TORQUE</b>	715 @ 4400 rpm
<b>REDLINE</b>	6500 rpm
<b>0 TO 60<sup>1</sup></b>	2.85 seconds with available 8-speed paddle-shift automatic and ZTK Track Performance Package
<b>QUARTER MILE</b>	10.6 seconds with available 8-speed paddle-shift automatic and ZTK Track Performance Package
<b>SKID PAD (MAX LATERAL ACCELERATION)</b>	1.2 g with available ZTK Track Performance Package
<b>BRAKING SYSTEM</b>	Brembo® aluminum 6-piston monobloc fixed front calipers with carbon ceramic rotors; aluminum 4-piston rear calipers with carbon ceramic rotors
<b>ROTOR DIAMETER</b>	15.5-in. cross-drilled front and 15.3-in. cross-drilled rear carbon ceramic rotors
<b>CURB WEIGHT</b>	3,584 lbs. (coupe) 3,642 lbs. (convertible)
<b>WEIGHT DISTRIBUTION (F/R)</b>	50/50
<b>MICHELIN® PILOT® SUPER SPORT ZP SUMMER-ONLY TIRES<sup>2</sup></b>	285/30ZR19 front 335/25ZR20 rear
<b>STABILIZER BAR DIAMETER</b>	30.7 mm
<b>SHOCK PISTON DIAMETER</b>	46 mm

## SPECIFICATIONS

	ZR1
<b>WHEELBASE</b>	106.7 in./2710 mm
<b>OVERALL LENGTH</b>	179.8 in./4567 mm
<b>OVERALL WIDTH</b>	77.4 in./1966 mm
<b>TRACK</b>	64.4 in./1636 mm front 63.6 in./1615 mm rear
<b>HEIGHT</b>	48.5 in./1232 mm (coupe) 48.7 in./1237 mm (convertible)
<b>LUGGAGE CAPACITY</b>	15 cu. ft./425 L (coupe) 10 cu. ft./283 L (convertible)
<b>STEERING WHEEL DIAMETER</b>	14.2 in./360 mm
<b>TURNING CIRCLE: CURB TO CURB</b>	40.03 ft./12.2 m
<b>STEERING ROTATION: LOCK TO LOCK</b>	2.40 turns
<b>FUEL TANK (APPROXIMATE)</b>	18.5 gal./70 L
<b>EPA-ESTIMATED FUEL ECONOMY (MPG CITY/HIGHWAY)</b>	13/19 manual 12/20 automatic

FOR DETAILED ORDERING INFORMATION ABOUT ZR1, PLEASE REFER TO THE 2019 CORVETTE CATALOG.

<sup>1</sup> Based on initial vehicle movement. <sup>2</sup> Do not use summer-only tires in winter conditions, as it would adversely affect vehicle safety, performance and durability. Use only GM-approved tire and wheel combinations. Unapproved combinations may change the vehicle's performance characteristics. For important tire and wheel information, go to [my.chevrolet.com/learnAbout/chevrolettires](http://my.chevrolet.com/learnAbout/chevrolettires) or see your dealer.



## ENGINE



### 6.2L LT5 SUPERCHARGED V8 (STANDARD ON ZR1)

<b>HORSEPOWER</b>	755 @ 6300 rpm
<b>TORQUE</b>	715 lb.-ft. @ 4400 rpm
<b>BORE AND STROKE</b>	103.25 mm x 92 mm
<b>FIRING ORDER</b>	1-8-7-2-6-5-4-3
<b>FUEL SYSTEM</b>	Dual Fuel Injection (Direct Injection and Port Fuel Injection)
<b>FUEL</b>	Premium required
<b>BLOCK</b>	Cast aluminum
<b>CYLINDER HEAD</b>	Cast aluminum
<b>INTAKE VALVES</b>	Titanium
<b>EXHAUST VALVES</b>	Hollow sodium-filled
<b>INTAKE MANIFOLD</b>	Cast aluminum supercharger
<b>EXHAUST MANIFOLD</b>	Cast stainless steel
<b>MAIN BEARING CAPS</b>	Cast nodular iron
<b>CRANKSHAFT</b>	Forged steel
<b>CAMSHAFT</b>	Billet steel
<b>CONNECTING RODS</b>	Forged powder metal
<b>ADDITIONAL ENGINE FEATURES</b>	Dual Fuel Injection (Direct Injection and Port Fuel Injection) Variable Valve Timing (VVT) Electronic Throttle Control Oil-life monitoring system Dry-sump oil system Eaton® TVS R2650 supercharger with dual-brick air-to-liquid intercooler

## CORVETTE EXPERIENCE

Thanks to a special partnership with the Ron Fellows Performance Driving School, the official Corvette driving school, Chevrolet is pleased to offer ZR1 owners a complimentary 2-day experience<sup>1</sup> at the luxurious Spring Mountain Motor Resort and Country Club. Using Corvette ZR1 coupes provided by the school, you'll learn to drive with speed, confidence and finesse, employing techniques that helped make Ron Fellows one of North America's most versatile and successful race drivers. It's an intimate, high-energy, track-focused program designed specifically to help you fully experience the breathtaking performance of your ZR1.

This complimentary 2-day program includes school tuition only and does not include travel costs.

## TRANSMISSIONS

TRANSMISSION RATIOS (:1)	ZR1	
	MANUAL	PADDLE-SHIFT AUTO
1	2.289	4.56
2	1.611	2.97
3	1.208	2.08
4	1	1.69
5	0.813	1.27
6	0.672	1
7	0.454	0.85
8	–	0.65
AXLE	3.42	2.41



**RON FELLOWS**  
PERFORMANCE DRIVING SCHOOL  
SPRING MOUNTAIN

<sup>1</sup> Only first retail purchasers of new and unused Corvette models are eligible. Does not include travel costs.





CHEVROLET

## COMPLETE CARE

Experience Chevrolet Complete Care, a comprehensive coverage, warranty and protection program that comes standard with every new 2019 Chevrolet Corvette lease and purchase. Simply, it is designed around you, to make it easy to keep your Chevrolet like new – and give you the confidence you deserve when you need it most.

### YOUR COMPREHENSIVE OWNER BENEFIT PROGRAM.

Includes two maintenance visits (oil and filter changes and multipoint vehicle inspections)<sup>1</sup>

5 years/60,000 miles of Roadside Assistance and Courtesy Transportation<sup>2</sup>

3-year/36,000-mile Bumper-to-Bumper Limited Warranty<sup>2</sup>

5-year/60,000-mile Powertrain Limited Warranty<sup>2</sup>

6 years/100,000 miles of Rust-Through Protection<sup>2</sup>

10 years of standard connectivity with Chevrolet Connected Access<sup>3</sup>

1-month trial of Chevrolet Connected Services<sup>4</sup> and 1 month of OnStar Safety & Security coverage<sup>4</sup>

## OWNERSHIP EXTRAS

CHEVROLET



[CHEVROLET.COM/WARRANTY](http://CHEVROLET.COM/WARRANTY)

CHEVROLET



[CHEVROLET.COM/ACCESSORIES](http://CHEVROLET.COM/ACCESSORIES)



[ONSTAR.COM](http://ONSTAR.COM)

 SIRIUSXM

[SIRIUSXM.COM](http://SIRIUSXM.COM)

## NEW VEHICLE LIMITED WARRANTY

**3-YEAR/36,000-MILE BUMPER-TO-BUMPER LIMITED WARRANTY** Chevrolet will warrant each 2019 Corvette from bumper to bumper for 3 years/36,000 miles (whichever comes first; see dealer for details), with no deductible, from the original in-service date of the vehicle, for warrantable repairs that are required as a result of defects due to materials and/or workmanship. Cosmetic corrosion resulting from defects is also covered under the Bumper-to-Bumper Limited Warranty. In addition, rust-through corrosion will be covered for 6 years/100,000 miles (whichever comes first). See dealer for details.

**5-YEAR/60,000-MILE TRANSFERABLE POWERTRAIN LIMITED WARRANTY** Every 2019 Corvette comes with a 5-year/60,000-mile (whichever comes first) transferable Powertrain Limited Warranty. 24/7 Roadside Assistance and Courtesy Transportation are also offered for the duration of the Powertrain Limited Warranty. Please see your Chevrolet dealer for details.

<sup>1</sup> Maintenance visits must occur within the first year of vehicle delivery. Does not include air filters. See participating dealer for other restrictions and complete details. <sup>2</sup> Whichever comes first. See dealer for details. <sup>3</sup> Limitations apply. Not transferable. Standard connectivity available to original purchaser for 10 years from vehicle delivery date for 2018 model year or newer Chevrolet vehicles. Visit [onstar.com](http://onstar.com) for details and further plan limitations. Connected Access does not include emergency or security services. Availability and additional services enabled by Connected Access are subject to change. <sup>4</sup> 2018 model year and newer vehicles include 1 month of OnStar Safety & Security Plan and 1 month of Chevrolet Connected Services, which include navigation services and Remote Access Plan, and 1 month or 3 GB of 4G LTE data (whichever comes first) from vehicle delivery date. Services are subject to User Terms and limitations. Visit [onstar.com](http://onstar.com) for more details. Data plans offered by AT&T. Availability subject to change.



## IMPORTANT INFORMATION

**CHEVROLET OWNER CENTER (MY.CHEVROLET.COM)** Everything you need to know. Anything you need to do. Your Chevrolet Owner Center makes it easy. Create your account today to get the most out of your new vehicle. Get special alerts and offers, schedule service, review your maintenance schedule, and view how-to videos specifically for your vehicle. All online, anytime. Visit the Owner Center today to register or take a tour.

**ENGINES** Chevrolet products are equipped with engines produced by GM Global Propulsion Systems or other suppliers to GM worldwide. The engines in Chevrolet products may also be used in other GM makes and models.

**ASSEMBLY** Chevrolet vehicles and their components are assembled or produced by different operating units of General Motors, its subsidiaries or suppliers to GM worldwide. We sometimes find it necessary to produce Chevrolet vehicles with different or differently sourced components than originally scheduled. Since some options may be unavailable when your vehicle is assembled, we suggest you verify that your vehicle includes the equipment you ordered and that, if there were changes, they are acceptable to you.

**CHEVROLET CONNECTED SERVICES AND ONSTAR** Connected vehicle services require a paid connected vehicle services plan or trial and connected hardware, vehicle electrical system (including battery), wireless service and GPS satellite signals to be available and operating for features to function properly. OnStar acts as a link to existing emergency service providers. Visit [onstar.com](http://onstar.com) for coverage map, details and system limitations.

**A NOTE ON CHILD SAFETY** Always use seat belts and the correct child restraint for your child's age and size, even with airbags. Even in vehicles equipped with the Passenger Sensing System, children are safer when properly secured in a rear seat in the appropriate infant, child or booster seat. Never place a rear-facing infant restraint in the front seat of any vehicle equipped with an active frontal airbag. See the Owner's Manual and the child safety seat instructions for more safety information.

**IMPORTANT WORDS ABOUT THIS CATALOG** We have tried to make this catalog comprehensive and factual. We reserve the right, however, to make changes at any time, without notice, in prices, colors, materials, equipment, specifications, models and availability. Specifications, dimensions, measurements, ratings and other numbers in this catalog and other printed materials provided at the dealership or affixed to vehicles are approximations based on design and engineering drawings, prototypes and laboratory tests. Your vehicle may differ due to variations in manufacture and equipment. Since some information may have been updated since the time of printing, please check with your Chevrolet dealer for complete details. Chevrolet reserves the right to lengthen or shorten

the model year for any product for any reason or to start and end model years at different times. Certain vehicle features may lose their usefulness over time due to obsolescence from technological changes. Unless otherwise noted, all claims based on GM Luxury Sports Car segment and latest available competitive information. Excludes other GM vehicles.

**TIRES** Corvette is equipped with run-flat Michelin® Pilot® Super Sport ZP summer-only tires<sup>1</sup> that eliminate the need for a spare. The tire design enables safe function during and after loss of pressure for some distance at a moderate speed. The shorter the distance that you drive with loss of pressure, the better the chance that the tire can be repaired. As soon as possible, contact Roadside Assistance for the nearest authorized GM or run-flat tire servicing facility and have the tire inspected. See your Owner's Manual. Corvette tires tend to wear faster and are more susceptible to damage from road hazards or curb impact than standard profile tires. This type of damage is not covered by the GM New Vehicle Limited Warranty.

**FLEET ORDERS** Some standard content may be deleted on fleet orders. See dealer for details.

**CHEVROLET OWNERSHIP EXPERIENCE** Chevrolet is committed to enhancing the vehicle shopping and ownership experience through a wide array of programs. Visit [chevrolet.com](http://chevrolet.com) to build and price, find a vehicle, request a quote, compare vehicles, find financial tools or track your vehicle order. You'll also find information about 24-hour Roadside Assistance, Courtesy Transportation, Customer Assistance, GM Mobility, safety and current incentives.

**CHEVROLET.COM/SAFETY** Chevrolet is committed to keeping you and your family safe – from the start of your journey to your destination. That's why every Chevrolet is designed with a comprehensive list of safety and security features to help give you peace of mind.

**GMMOBILITY.COM (1-800-323-9935)** GM Mobility™ offers financial assistance for eligible adaptive equipment to make automotive travel easier for persons with disabilities or special transportation needs. To learn more about special GM Mobility offers, visit [gmmobility.com](http://gmmobility.com).

**THE BUYPOWER CARD** The Chevrolet BuyPower Card – Every purchase you make with the BuyPower Card from Capital One\* helps you earn toward an eligible new Chevrolet, Buick, GMC or Cadillac vehicle. There's no limit on the amount you can earn or redeem, and your Earnings don't expire. Visit [chevroletbuypowercard.com/catalogs](http://chevroletbuypowercard.com/catalogs).

\* Capital One, N.A. is the issuer of the BuyPower Card. General Motors ("GM") is responsible for the operation and administration of the Earnings program.



TWITTER.COM/CHEVROLET



YOUTUBE.COM/CHEVROLET



FACEBOOK.COM/CHEVROLET

GM, the GM logo, Chevrolet, the Chevrolet logo, and the slogans, emblems, vehicle model names, vehicle body designs and other marks appearing in this catalog are the trademarks and/or service marks of General Motors, its subsidiaries, affiliates or licensors. ©2018 OnStar. All rights reserved. Sirius, XM, SiriusXM and all related marks and logos are trademarks of Sirius XM Radio Inc. Mobil 1 is a trademark of Exxon Mobil Corporation. Brembo is a registered trademark of Brembo S.p.A. Eaton is a registered trademark of Eaton Corporation PLC. Michelin and Pilot are registered trademarks of Michelin North America, Inc.

©2018 General Motors. All rights reserved. May 2018

<sup>1</sup> Do not use summer-only tires in winter conditions, as it would adversely affect vehicle safety, performance and durability. Use only GM-approved tire and wheel combinations. Unapproved combinations may change the vehicle's performance characteristics. For important tire and wheel information, go to [my.chevrolet.com/learnAbout/chevrolettires](http://my.chevrolet.com/learnAbout/chevrolettires) or see your dealer.

