

2015

Corvette Z06 coupe in Velocity Yellow Tintcoat (extra-cost color) with available Z07 Performance Package and other features (foreground). Corvette C7.R race car (background).



A STUNNING ARGUMENT AGAINST THE ORDINARY.

*It's been called "stunning,"
"cultivated," even "astonishing."
The acclaimed Corvette Stingray
takes on all challengers, with the
prowess, aesthetic impact and fine
craftsmanship worthy of the
Stingray name.*

But we didn't stop there.

*Introducing the all-new 2015 Corvette
Z06. Featuring advanced technologies,
a race-proven bloodline and a
supercharged engine, Z06 thrusts
Corvette deep into supercar territory.
You'll find it at the intersection of
Le Mans and the Autobahn.*

FIND NEW ROADS™

Corvette Stingray coupe in
Arctic White with available features.



**“A FLAT-OUT
SENSATION.”**

— FORTUNE MAGAZINE

EXTERIOR DESIGN



PROVOCATIVE FORM FOLLOWS PRECISION-FOCUSED FUNCTION.

- 1. Front-fender vents effectively cool the front brakes and relieve underhood air pressure to reduce aerodynamic drag.*
- 2. Signature four-element taillamps feature state-of-the-art LED lighting and functional aircraft-style air outlets for the available differential and transmission coolers.*
- 3. Frosted indirect high-intensity discharge headlamps are framed by edge-lit amber LED turn signals and Carbon Flash housings.*

IT'LL NEVER FLY. A functional hood extractor directs hot air from the grille up through the forward-tilted radiator and out of the engine compartment to increase downforce at high speeds.

Corvette Stingray coupe
in Arctic White with available features.



AESTHETIC IMPACT. Every inch of the Corvette Stingray exterior is shaped to enhance high-performance driving. Data from the Corvette Racing program was used to help balance front and rear grip.

STRONGER, LIGHTER CARBON FIBER. Rigid, race-car-inspired carbon fiber and carbon-nano-composite underbody panels reduce weight to achieve optimal handling, balance and acceleration.

OPEN-TOP COUPE. The Stingray coupe can also become an open-top vehicle, with a carbon-fiber roof panel so light just one person can remove it and stow it in the trunk. Available removable roof panel options include: body color, visible carbon fiber and transparent.

WORLDWIDE APPLAUSE. Stingray was named the 2014 North American Car of the Year and won praise around the world for its beauty and precision. Edmunds.com also recognized the 2014 Stingray as a "Top-Rated Vehicle" in its class.

HOW DO YOU TOP A STINGRAY?



Corvette Stingray convertible 3LT
in Blade Silver Metallic with available
Z51 Performance Package and
Atlantic Design Package.

COUPE OR CONVERTIBLE? You decide. To some drivers, the convertible Stingray is the only Stingray. Both models use an identical rigid, lightweight aluminum frame structure.

PUSH-BUTTON TOP AND TONNEAU COVER.

The convertible features a fully electronic top that can be lowered remotely using the key fob, even while driving at speeds up to 30 mph. With the top up, a premium design ensures maximum sound absorption for a quiet cabin. And when you decide to put the top down, it hides beneath a body-color tonneau cover that flows down in a stunning “waterfall” between the seats.

KEEPING COOL WITH Z51. Available on coupe and convertible, the Z51 Performance Package includes dual brake ducts that transport air from the front grille through the wheelwells to effectively cool the front brakes and expel heat. This reduces brake fade and optimizes stopping performance.

NEW ZF1 APPEARANCE PACKAGE. Giving the provocative Stingray exterior even more visual impact is the new-for-2015 ZF1 Appearance Package. Available on Stingray coupe and convertible without the Z51 Performance Package, ZF1 includes 19-inch front and 20-inch rear wheels and the Z51 rear spoiler.



A wide-angle photograph of the interior of a Corvette Stingray convertible 3LT. The car is finished in a rich tan leather, known as Kalahari. The view is from the driver's side, looking towards the front passenger seat. The dashboard, center console, and door panels are all wrapped in this leather. The seats feature a perforated leather texture. The steering wheel is black with the Corvette logo in the center. The instrument cluster and infotainment screen are visible in the background. The car is parked on a road with a guardrail and some vegetation in the distance.

INTERIOR DESIGN

**ZERO COMPROMISES.
ZERO SHORTCUTS.**

Corvette Stingray convertible 3LT interior in Kalahari with available features.

DRIVER-ORIENTED COCKPIT. Illuminated by innovative digital features and intelligent driver controls, the Stingray cockpit is a stunning change from your typical interior scenery. An ingenious available color Head-Up Display complements the two customizable 8-inch color LED screens. The color center screen has an entertainment interface and

is a highly intuitive retractable, tablet-inspired touch-screen.

HAND-STRETCHED LEATHER. Napa leather, available on the 3LT trim level, is a testament to the finely crafted Stingray interior. Free from imperfections, its natural grain dismisses the notion of synthetic textures. The 3LT also includes a hand-stretched, leather-wrapped

instrument panel swathed and sewn to meticulous fit and finish, while lightweight aluminum accents adorn the doors, pedals, shifter and cockpit instrumentation.

PADDLE-SHIFT CONTROL. Paddles initiate Active Rev Matching on the 7-speed manual transmission or manual shifting on the available 8-speed paddle-shift automatic.

This all-new automatic rivals the dual-clutch transmissions offered by some competitors.

PRECISE COMFORT. The passenger air vent includes an interior temperature control and indicator, plus controls for the available heated and ventilated seats. In every detail, this interior is designed for total comfort.

AUTHENTIC MATERIALS. The Stingray interior is imbued with a deep respect for authentic materials. Real aluminum. Available carbon fiber. Leather hand-selected and crafted to adorn a new generation of elegance.

GRAND TOURING SEAT. The standard GT seat begins with a lightweight magnesium frame and cradles the driver for optimal comfort and support. Precision hand-stitching hugs each and every contour. The 3LT trim level offers Grade A Napa leather or available sueded microfiber inserts.

COMPETITION SPORT SEAT. The available Competition Sport seat provides maximum support for cornering, with more pronounced side bolsters designed for high-performance driving on the track. Upgrade with available sueded microfiber seat inserts, gearshift and steering wheel.



Corvette Stingray 3LT interior in Kalahari. Available Competition Sport seats with sueded microfiber seat inserts shown.



INNOVATIVE TECHNOLOGIES FOR A CUSTOMIZABLE DRIVING EXPERIENCE.

1. An available color Head-Up Display projects critical data into the driver's line of sight.
2. The retractable, tablet-inspired color touch-screen provides information at a glance.
3. Customizable gauge cluster is optimized for each driver mode.

THE CONNECTED CORVETTE. Stingray offers available OnStar with 4G LTE and built-in Wi-Fi¹ hotspot,¹ providing a better in-vehicle experience than your smartphone. Our stronger signal means you have a reliable connection. This gives you and your co-pilot the ability to seamlessly connect up to seven mobile devices to the Internet, giving you the freedom to roam while connected.

CHEVROLET MYLINK.² The system features a retractable 8-inch diagonal color touch-screen. Using steering wheel-mounted controls, hand gesture recognition and voice recognition capabilities, you can take calls and receive Text Message Alerts³ hands-free, stream music services like Pandora[®] Internet Radio,⁴ plus access a broad range of functions including available OnStar,⁵ and available SiriusXM Satellite Radio.⁶ Other features include available 3-D navigation maps, an SD card reader, an auxiliary input jack and Bluetooth[®] wireless technology.⁷ Your favorite music and phone calls are crystal clear, thanks to the Bose[®] Premium audio system.

TAILORED TO YOU. The leather-wrapped power tilt and telescopic steering wheel includes controls for Bluetooth[®] wireless technology,⁷ cruise control, audio system and Driver Information Center.

¹ Devices must be WPA2-compliant with active OnStar service and data plan. Wi-Fi devices manufactured prior to 2006 may not be compatible. Please consult your device manufacturer for information regarding the WPA2 security protocol and Wi-Fi device compatibility. Visit onstar.com for details and system limitations. ² Full functionality requires compatible Bluetooth and smartphone, and USB connectivity for some devices. Map coverage available in the United States, Puerto Rico and Canada. ³ Requires compatible smartphone with Bluetooth profile (M.A.P.) and applicable text messaging features. Visit gmtotalconnect.com for vehicle and smartphone eligibility. ⁴ Data plan rates apply. ⁵ Visit onstar.com for coverage map, details and system limitations. Services vary by model and conditions. ⁶ SiriusXM subscription is free for three months with 1LT model and free for one year with 2LT and 3LT models. If you subscribe after your trial period, subscriptions are continuous until you call SiriusXM to cancel. See SiriusXM Customer Agreement for complete terms at siriusxm.com. Other fees and taxes will apply. All fees and programming subject to change. XM satellite service is available only in the 48 contiguous United States and D.C. ⁷ Go to gmtotalconnect.com to find out which phones are compatible with the vehicle.



ENGINEERED TO LEAVE NOTHING BEYOND YOUR CONTROL.



¹ 455 horsepower with standard engine. 460 horsepower with available dual-mode performance exhaust. ² 460 lb.-ft. of torque with standard engine. 465 lb.-ft. of torque with available dual-mode performance exhaust. ³ When equipped with available Z51 Performance Package and 8-speed paddle-shift automatic transmission. ⁴ Visit fuelconomy.gov for details.

LIGHTER, MORE RIGID, MORE PRECISE.

One-third the weight of steel, the latest generation Corvette aluminum space frame is 100 pounds (45 kilograms) lighter and 57% more rigid than its steel predecessor.

OPTIMIZED POWERTRAIN. The 6.2L LT1 V8 engine boasts 460 horsepower¹ and 465 lb.-ft. of torque,² plus 0-to-60 times of 3.7 seconds.³ Compact engine design lowers the hoodline and vehicle center of gravity.

THREE-PART POWER. A trio of innovative technologies rarely seen in any elite sports car – Direct Injection, Variable Valve Timing and Active Fuel Management™ – combine revolutionary power with fuel efficiency.⁴ Direct Injection achieves maximum

combustion efficiency, Variable Valve Timing optimizes camshaft timing, and Active Fuel Management seamlessly deactivates four cylinders when cruising at consistent speeds to help save fuel.



Corvette Stingray coupe in Laguna Blue Tintcoat (extra-cost color) with available Z51 Performance Package.

CHOOSE YOUR ADVENTURE. An available all-new 8-speed paddle-shift automatic transmission offers smooth control with quick, precise shifts that rival its dual-clutch competitors. Plus, there's a manual mode for a higher level of driver control.

IN COMMAND. The standard 7-speed manual transmission is an equally brilliant complement to the LT1 V8. The rear transaxle location enables a 50/50 vehicle weight balance. Intelligent sensors anticipate gear selections and match engine speed for

smooth transitions during both upshifts and downshifts. Active Rev Matching enhances the driving experience by simulating heel-toe shifting perfection at the touch of a switch.



“Our goal with engineering this car comes down to one word. Precision.”
– Tadge Juechter, Executive Chief Engineer



PRECISION – IT’S OUR MANTRA.


-
- 1. Executive Chief Engineer Tadge Juechter: “The stiff structure gives drivers precise control over the wheels and very good feedback from the steering wheel.”*
 - 2. Precision assembly with premium materials like aluminum and carbon fiber helps achieve an impressive power-to-weight ratio.*
 - 3. Carbon-fiber body panels and an aluminum frame that’s 100 pounds (45 kilograms) lighter and 57% more rigid than its steel predecessor work together to improve rigidity and enhance cornering.*
-

Z51 PERFORMANCE PACKAGE



Z51 PERFORMANCE PACKAGE IS THE TRACK-TUNED STINGRAY OPTION.

- 1. Z51 includes specific gear ratios, shocks, springs and stabilizer bars.*
 - 2. With Z51, you get 19-inch front and 20-inch rear wheels for razor-sharp response.*
 - 3. Larger front brakes with slotted rotors (shown with available Red calipers) are included with the Z51 Performance Package.*
-



Corvette Stingray coupe in Torch Red with available Z51 Performance Package and other available features.

TRACK CAPABILITY. The available Z51 Performance Package features race-proven technologies: Electronic Limited-Slip Differential (e-LSD) promotes improved stability and responsiveness. A dry-sump oil system delivers oil through high g-force cornering.

MAGNETIC SELECTIVE RIDE CONTROL.™ Available third-generation Magnetic Selective Ride Control technology stiffens the suspension for high-performance driving without sacrificing a smooth ride.

PERFORMANCE TRACTION MANAGEMENT. With this system (included and only available with Magnetic Selective Ride Control), five separate settings of torque reduction and brake intervention facilitate maximum grip on the road for more confident driving.



60 MPH
0.25G
2

Current 00:20.5
Previous 02:00.2

Best 02:00.3

100 120 140 160 180 200

0 1 2 3 4 5 6 7
RPM / 1000

1.25 1.25 1.25 1.25

2

0 1/2 260
CORVETTE

**WITH THE TURN OF A DIAL,
EVERYTHING CHANGES.**

DRIVER MODE SELECTOR. Choose from five distinct driver modes – Weather, Eco, Tour, Sport and Track – which electronically calibrate up to 12 performance variables so you can customize your Stingray or Z06 for any road.

TRACK-PROVEN. TRACK-READY. Track mode is designed for legitimate race settings. Launch control provides maximum off-the-line acceleration. Steering effort and Magnetic Selective Ride Control¹ damping adjust to provide maximum responsiveness. Performance Traction Management² is enabled. Throttle progression optimizes for track performance. Gauge configuration offers a GTLM (GT Le Mans) Corvette Racing-inspired display complete with shift lights and lap timer. The lap timer is linked to the available Performance Data Recorder, if equipped.

¹ Available with Z51 Performance Package. ² Included with available Magnetic Selective Ride Control.





CAPTURE THE EXCITEMENT. Record, share and analyze your driving experiences on and off the track with the available industry-exclusive Performance Data Recorder (PDR). Add an extra dimension to your drive by logging video of your drives, along with real-time performance data, onto an SD memory card stored in the glove box. Four modes allow you to capture video, audio (except in Valet Mode), driving stats, date and time, and a lot more.

ANALYZE YOUR DRIVE. Data is captured using a seamlessly integrated, windshield-mounted HD camera module, as well as a performance processor, internal accelerometers and a GPS system. Play your video back on a computer or tablet, or relive your drive right inside your Corvette (when stopped, of course) on the 8-inch diagonal touch-screen. You can even analyze your driving technique using Cosworth Toolbox software that can be downloaded from the Corvette website.

FOUR SELECTABLE OVERLAY MODES.

Track Mode overlays the maximum level of data onto your drive video, including speed, rpm, throttle and braking, g force, location-based track map, lap times and more. Sport Mode shows fewer details, but includes key data such as speed and g force. Performance Mode records 0-to-60 mph acceleration, quarter-mile speed and elapsed time, as well as 0-to-100-to-0 mph runs. For everyday driving and scenic road trips, Touring Mode has no data overlay.

VALET MODE. Keep tabs on your Corvette when you're not the driver by setting the PDR to Valet Mode, which can record outside forward video and data.

A blue Corvette Stingray coupe is shown from a rear three-quarter view, driving on a paved road that runs along a cliffside. The road has a concrete guardrail with decorative arches. In the background, there are rugged, brownish mountains and a blue ocean with some rocky islands. The sky is bright and clear.

**“NUMBER 1 IN
LUXURY SPORTS CARS.”**

— U.S. NEWS & WORLD REPORT
2014 MODEL AS OF SEPTEMBER 26, 2014

Corvette Stingray coupe in Laguna Blue
Tintcoat (extra-cost color) with available
Z51 Performance Package.

Z06

**“YOUR ROAD-LEGAL
C7.R IS READY.”**

— ROAD & TRACK

Corvette Z06 coupe in Velocity Yellow Tintcoat (extra-cost color) with available Z07 Performance Package.

¹ Do not use summer-only tires in winter conditions, as it would adversely affect vehicle safety, performance and durability. Use only GM-approved tire and wheel combinations. Unapproved combinations may change the vehicle's performance characteristics. For important tire and wheel information, go to gmaccessorieszone.com or see your dealer.

CLOSE LINK. The all-new Z06, codeveloped with the Corvette C7.R race car, is the fastest, most powerful production Corvette ever. With the available Z07 Performance Package and 8-speed paddle-shift automatic transmission, Z06 will sprint to 60 mph in 2.95 seconds and run the quarter-mile in 10.95 seconds.

SHARED ALUMINUM FRAME. The ultra-high-strength, lightweight aluminum frame used for Stingray and Z06 formed the basis for the Corvette C7.R race car frame – only minor modifications were made, including the addition of the mandated roll cage.

TENACIOUS GRIP. Z06 is further differentiated from the Stingray with wider flared fenders that accommodate larger, wider wheels and tires for more grip, enabling Z06 equipped with the available Z07 Performance Package to achieve 1.2 g. Larger vents enhance airflow to the engine, brakes, transmission and differential for

increased track capability. The aerodynamic packages generate incredible downforce for cornering grip and stability. The rear fenders have been widened by 80 mm and the front by 56 mm, creating a more aggressive stance and enhanced handling. Plus, Z06 comes standard with larger Michelin® Pilot® Super Sport ZP summer-only tires.¹



Corvette Z06 coupe in Velocity Yellow Tintcoat (extra-cost color) with available Z07 Performance Package.

650-HP SUPERCAR. Z06 is powered by the LT4 6.2L supercharged aluminum V8 delivering 650 horsepower and 650 lb.-ft. of torque. It incorporates an efficient next-generation supercharger,¹ as well as a dry-sump oil system and titanium intake valves and connecting rods for reduced mass.

THE TECHNOLOGIES OF EFFICIENCY.

While advanced engine technologies enable supercar performance, Corvette engineers have managed to increase LT4 fuel efficiency² by leveraging the same trio of advanced technologies introduced on the Corvette Stingray powertrain: Direct Injection,

Active Fuel Management and Continuously Variable Valve Timing. Z06 is available with either a 7-speed manual transmission with Active Rev Matching or a new 8-speed paddle-shift automatic.

¹ The Z06 supercharger is more efficient and more compact than the previous Eaton TVS supercharger found on the 2013 Corvette ZR1. ² Visit fuel economy.gov for details.



RACE-PROVEN DETAILS AND THE FIRST-EVER Z06 REMOVABLE ROOF PANEL.

- 1. A carbon-fiber hood strips away weight, lowering the vehicle's center of gravity. And, for the first time, Z06 features a removable carbon-fiber roof panel.*
- 2. A reengineered drivetrain cooling duct provides 50% more airflow than Stingray.*
- 3. Grip the road with standard Michelin® Pilot® Super Sport ZP summer-only tires!*

1 Do not use summer-only tires in winter conditions, as it would adversely affect vehicle safety, performance and durability. Use only GM-approved tire and wheel combinations. Unapproved combinations may change the vehicle's performance characteristics. For important tire and wheel information, go to gmaccessorieszone.com or see your dealer.



ENTHUSIAST'S DREAM. CORVETTE Z06 IS THE FIRST 600-PLUS-HORSEPOWER SUPERCAR AVAILABLE IN COUPE AND CONVERTIBLE WITH A CHOICE OF PADDLE-SHIFT AUTOMATIC OR MANUAL TRANSMISSION.

- 1. Every surface of the Z06 interior is covered with premium materials, including available Napa leather, aluminum, carbon fiber and sueded microfiber.*
- 2. Choose from the GT seat or the Competition Sport seat (shown), which provides greater support on the track.*

Corvette Z06 convertible 3LZ
in Blade Silver Metallic with available
Z07 Performance Package.



PERFORMANCE

	STINGRAY	STINGRAY WITH Z51	Z06
ENGINE	6.2L LT1 V8	6.2L LT1 V8	6.2L LT4 Supercharged V8
TYPE	90-degree V8, aluminum; Continuously Variable Valve Timing	90-degree V8, aluminum; Continuously Variable Valve Timing	90-degree V8, aluminum; Continuously Variable Valve Timing
COMPRESSION RATIO	11.5:1	11.5:1	10.0:1
HORSEPOWER	455 @ 6000 rpm (460 with performance exhaust)	460 @ 6000 rpm	650 @ 6400 rpm
TORQUE	460 lb.-ft. @ 4600 rpm (465 with performance exhaust)	465 lb.-ft. @ 4600 rpm	650 lb.-ft. @ 3600 rpm
REDLINE	6600 rpm	6600 rpm	6600 rpm
0 TO 60	4.0 seconds	3.8 seconds (3.7 seconds with available 8-speed paddle-shift automatic)	2.95 seconds with available 8-speed paddle-shift automatic (with available Z07 Performance Package)
QUARTER MILE	-	12.0 seconds @ 119 mph (11.9 seconds with available 8-speed paddle-shift automatic)	10.95 seconds @ 127 mph with available 8-speed paddle-shift automatic (with available Z07 Performance Package)
SKID PAD (MAXIMUM LATERAL ACCELERATION)	1.0 g	1.03 g	1.2 g (with available Z07 Performance Package)
BRAKING SYSTEM	Brembo® 4-wheel ventilated disc with ABS; 4-piston calipers	Brembo 4-wheel ventilated disc with larger front rotors; 4-piston calipers	Brembo aluminum 6-piston monobloc fixed front calipers; 4-piston rear calipers with steel rotors; Brembo carbon ceramic rotors with aluminum 6-piston monobloc fixed front calipers; aluminum 4-piston monobloc fixed rear calipers (with Z07 Performance Package)
ROTOR DIAMETER	12.6-in. ventilated front 13.3-in. ventilated rear	13.6-in. slotted front 13.3-in. slotted rear	14.6-in. slotted front 14.4-in. slotted rear 15.6-in. slotted front (Z07) 15.3-in. slotted rear (Z07)
CURB WEIGHT	3,298 lbs. (coupe) 3,362 lbs. (convertible)	3,298 lbs. (coupe) 3,362 lbs. (convertible)	3,524 lbs. (coupe) 3,582 lbs. (convertible)
POWER-TO-WEIGHT	7.25:1 (curb weight/horsepower) (7.17:1 with performance exhaust)	7.17:1 (curb weight/horsepower)	5.4:1 (curb weight/horsepower)
WEIGHT DISTRIBUTION (F/R)	49/51	49/51	50/50
MICHELIN® PILOT® SUPER SPORT ZP SUMMER-ONLY TIRES¹	245/40ZR18 front 285/35ZR19 rear	245/35ZR19 front 285/30ZR20 rear	285/30ZR19 front 335/25ZR20 rear
STABILIZER BAR DIAMETER	26.7 mm	28 mm	30.7 mm
SHOCK PISTON DIAMETER	35 mm	45 mm front/46 mm rear	46 mm

SPECIFICATIONS

	STINGRAY		STINGRAY WITH Z51		Z06	
WHEELBASE	106.7 in./2710 mm		106.7 in./2710 mm		106.7 in./2710 mm	
OVERALL LENGTH	176.9 in./4492 mm		176.9 in./4492 mm		176.9 in./4492 mm (Z06) 177.9 in./4518.6 mm (Z07)	
OVERALL WIDTH	73.9 in./1877 mm		73.9 in./1877 mm		77.4 in./1965 mm	
TRACK	63.0 in./1600 mm front 61.7 in./1568 mm rear		63.0 in./1600 mm front 61.7 in./1568 mm rear		63.50 in./1613 mm front 62.50 in./1588 mm rear	
HEIGHT	48.8 in./1239 mm coupe 48.9 in./1243 mm convertible		48.8 in./1239 mm coupe 48.9 in./1243 mm convertible		48.6 in./1234 mm coupe 48.7 in./1237 mm convertible	
STEERING WHEEL DIAMETER	14.2 in./360 mm		14.2 in./360 mm		14.2 in./360 mm	
TURNING CIRCLE: CURB TO CURB	37.7 ft./11.5 m		37.7 ft./11.5 m		37.7 ft./11.5 m	
STEERING ROTATION: LOCK TO LOCK	2.57 turns		2.57 turns		2.57 turns	
TRANSMISSION RATIOS (:1)	MANUAL	PADDLE-SHIFT AUTO	MANUAL	PADDLE-SHIFT AUTO	MANUAL	PADDLE-SHIFT AUTO
1	2.664	4.56	2.966	4.56	2.289	4.56
2	1.783	2.97	2.066	2.97	1.611	2.97
3	1.302	2.08	1.426	2.08	1.208	2.08
4	1.00	1.69	1.00	1.69	1.00	1.69
5	0.741	1.27	0.709	1.27	0.813	1.27
6	0.503	1.00	0.567	1.00	0.672	1.00
7	0.424	0.85	0.478	0.85	0.454	0.85
8	-	0.65	-	0.65	-	0.65
AXLE	3.42	2.41	3.42	2.73	3.42	2.41

¹ Do not use summer-only tires in winter conditions, as it would adversely affect vehicle safety, performance and durability. Use only GM-approved tire and wheel combinations. Unapproved combinations may change the vehicle's performance characteristics. For important tire and wheel information, go to gmaccessorieszone.com or see your dealer.

STANDARD AND INCREMENTAL EQUIPMENT

CORVETTE STINGRAY 1LT

6.2L LT1 V8 engine with Direct Injection, Variable Valve Timing and Active Fuel Management

7-speed manual transmission with Active Rev Matching and launch control

Active Handling System with all-speed Traction Control

4-wheel ventilated disc brakes with ABS and Panic Brake Assist

Speed-sensitive Electric Power Steering (EPS) with variable ratio

4-wheel independent suspension

Aluminum frame structure

Carbon-fiber hood with rear opening for engine access

Capless fueling

Oil-Life Monitor and engine oil cooler

Tire Pressure Monitoring System and run-flat summer-only performance tires¹

5-spoke aluminum wheels in Sterling Silver (18" x 8.5" front and 19" x 10" rear)

Aluminized stainless steel exhaust with 3" polished stainless steel tips

Dark Gray Metallic-painted brake calipers

Carbon-fiber removable roof panel, painted body-color (coupe)

Keyless Access with Push-Button Start

Xenon high-intensity discharge headlamps and upper LED daytime running lamps

Frontal and side-impact air bags² for driver and passenger with Passenger Sensing System

OnStar Directions & Connections[®] Plan³ with Automatic Crash Response, standard for the first six months

Bluetooth[®] wireless technology and audio streaming⁴ for select phones

Electronic cruise control with Set and Resume Speed

Driver Mode Selector with 5 modes

Outside heated power-adjustable body-color mirrors

Power-programmable door locks with lockout protection

Power windows with express-up/-down feature

Rear vision camera

Push-button hatch release

CORVETTE STINGRAY 1LT (CONTINUED)

Dual-zone automatic climate control with individual settings for driver and passenger, dedicated passenger controls, and outside temperature display

Air filtration system with pollen filter

Driver Information Center with reconfigurable 8-inch diagonal color display; includes trip/fuel information, vehicle information, vehicle settings and driver mode settings for Tour, Sport and Track modes

Power tilt and telescopic steering column

3-spoke leather-wrapped 14.2-inch (360 mm) diameter steering wheel with mounted controls for audio, cruise and Driver Information Center

Lighting: Courtesy, cargo and glove box

Leather-wrapped shift knob

Full power top with remote activation, includes glass rear window with integral defroster (convertible)

Storage: Electric locking glove box, motorized hidden storage behind 8-inch diagonal touch-screen (includes USB port⁵), center console and rear compartment with cover

GT bucket seats with Mulan leather seating surfaces and 8-way power adjusters

Floor console with two covered cup holders, two auxiliary power outlets, two USB ports⁵; SD card reader, auxiliary input jack and storage

Premium carpeted floor mats

Illuminated visor vanity mirrors for driver and passenger

Console-mounted passenger assist handle

Chevrolet MyLink[®] Radio with 8-inch diagonal high-resolution color touch-screen display with motorized power up/down and hidden storage with USB ports⁵; smartphone integration, Bluetooth audio streaming⁴; Siri Eyes Free⁷; Text Message Alerts⁸; Gracenote[®] database and natural language voice recognition

9-speaker Bose[®] sound system

SiriusXM Satellite Radio[®] with three trial months of the SiriusXM All Access Package featuring over 150 channels of satellite radio, including premium programming and access to over 150 channels of SiriusXM Internet radio on a computer, smartphone or tablet; SiriusXM NavTraffic[®] and Travel Link[®] are included with a three-month trial when the available Chevrolet MyLink[®] Radio with Navigation is selected

OnStar with 4G LTE and mobile Wi-Fi hotspot for up to seven devices¹⁰ standard for 3 months or 3 GB (whichever comes first)

CORVETTE STINGRAY 2LT

 In addition to or replacing 1LT features, 2LT includes:

Color-keyed console and door armrests

Driver-side auto-dimming rearview mirror and inside auto-dimming frameless rearview mirror

Color Head-Up Display with readouts for 4 modes, including Track mode with g-meter, vehicle speed and engine rpm

Advanced theft-deterrent system

Universal Home Remote with 3-channel programmable transmitter for garage door opener, located on driver visor

10-speaker Bose[®] Centerpoint[®] surround sound system

SiriusXM Satellite Radio[®] with 12-month subscription of the SiriusXM All Access Package featuring over 150 channels of satellite radio, including premium programming and access to over 150 channels of SiriusXM Internet radio on a computer, smartphone or tablet; SiriusXM NavTraffic[®] and Travel Link[®] are included with a 12-month subscription when the available Chevrolet MyLink[®] Radio with Navigation is selected

Heated and ventilated driver and passenger seats with power bolster and power lumbar

Memory Package

Corvette seat badging

Luggage shade for coupe

Parcel net

CORVETTE STINGRAY 3LT

 In addition to or replacing 2LT features, 3LT includes:

Chevrolet MyLink[®] Radio with Navigation with 8-inch diagonal high-resolution color touch-screen display with motorized power up/down and hidden storage with USB ports⁵; smartphone integration, Bluetooth audio streaming⁴; Siri Eyes Free⁷; Text Message Alerts⁸; Gracenote database, natural language voice recognition and enhanced GPS navigation system with 12-month subscription of SiriusXM NavTraffic[®] and Travel Link[®] (available on 1LT and 2LT)

Performance Data Recorder (available on 1LT and 2LT)

Leather-wrapped and color-keyed instrument panel, door armrests and console

Napa leather seat inserts

Sueded Microfiber-Wrapped Upper Interior Trim Package includes sueded microfiber headliner, visors, trim above windshield and rear window, A-pillar trim, and area around quarter windows (coupe); sueded microfiber visors, trim above windshield and rear-window cover and A-pillar trim (convertible)

¹ Do not use summer-only tires in winter conditions, as it would adversely affect vehicle safety, performance and durability. Use only GM-approved tire and wheel combinations. Unapproved combinations may change the vehicle's performance characteristics. For important tire and wheel information, go to gmaccessorieszone.com or see your dealer. ² Always use safety belts and the correct restraint for your child's age and size. Even in vehicles equipped with the Passenger Sensing System, children are safer when properly secured in a rear seat in the appropriate infant, child or booster seat. Never place a rear-facing infant restraint in the front seat of any vehicle equipped with a passenger air bag. See the Owner's Manual and the child safety seat instructions for more safety information. ³ Visit onstar.com for coverage map, details and system limitations. Services vary by model and conditions. OnStar acts as a link to existing emergency service providers. Not all vehicles may transmit all crash data. ⁴ Go to gmtotalconnect.com to find out which phones are compatible with the vehicle. ⁵ Not compatible with all devices. ⁶ Full functionality requires compatible Bluetooth and smartphone, and USB connectivity for some devices. ⁷ Requires available Chevrolet MyLink and compatible iPhone running iOS 6 or later. ⁸ Requires a compatible smartphone with Bluetooth profile (M.A.P.) and applicable text messaging features. Visit gmtotalconnect.com for vehicle and smartphone eligibility. ⁹ If you subscribe after your trial period, subscriptions are continuous until you call SiriusXM to cancel. See SiriusXM Customer Agreement for complete terms at siriusxm.com. Other fees and taxes will apply. All fees and programming subject to change. For more information about NavTraffic, visit siriusxm.com/navtraffic. For more information about Travel Link, visit siriusxm.com/travellink. XM satellite service is available only in the 48 contiguous United States and D.C. ¹⁰ Devices must be WPA2-compliant with active OnStar service and data plan. Wi-Fi devices manufactured prior to 2006 may not be compatible. Please consult your device manufacturer for information regarding the WPA2 security protocol and Wi-Fi device compatibility. Visit onstar.com for details and system limitations.

STANDARD AND INCREMENTAL EQUIPMENT (CONTINUED)

CORVETTE Z06 1LZ

6.2L LT4 supercharged V8 engine with Direct Injection, Variable Valve Timing and Active Fuel Management, with dry-sump oil system
Performance exhaust with 4" polished tips
7-speed manual transmission with Active Rev Matching and launch control
Magnetic Selective Ride Control and Performance Traction Management with Electronic Limited-Slip Differential
Active Handling System with all-speed Traction Control
4-wheel ventilated disc brakes with ABS and Panic Brake Assist
Speed-sensitive Electric Power Steering (EPS) with variable ratio
4-wheel independent suspension
Aluminum frame structure
Carbon-fiber hood with rear opening for engine access
Capless fueling
Oil-Life Monitor and engine oil cooler
Tire Pressure Monitoring System and run-flat summer-only performance tires ¹
Pearl Nickel-painted aluminum wheels (19" x 10" front and 20" x 12" rear)
Red-painted brake calipers
Carbon-fiber removable roof panel, painted body-color (coupe)
Keyless Access with Push-Button Start
Xenon high-intensity discharge headlamps and upper LED daytime running lamps
Frontal and side-impact air bags ² for driver and passenger with Passenger Sensing System
OnStar Directions & Connections Plan ³ with Automatic Crash Response, standard for the first six months
Bluetooth [®] wireless technology and audio streaming ⁴ for select phones
Electronic cruise control with Set and Resume Speed
Driver Mode Selector with 5 modes
Outside heated power-adjustable body-color mirrors
Power-programmable door locks with lockout protection
Power windows with express-up/-down feature
Rear vision camera
Push-button hatch release

CORVETTE Z06 1LZ (CONTINUED)

Dual-zone automatic climate control with individual settings for driver and passenger, dedicated passenger controls, and outside temperature display
Air filtration system with pollen filter
Driver Information Center with reconfigurable 8-inch diagonal color display; includes trip/fuel information, vehicle information, vehicle settings and driver mode settings for Tour, Sport and Track modes
Power tilt and telescopic steering column
3-spoke leather-wrapped 14.2-inch (360 mm) diameter flat-bottom steering wheel with mounted controls for audio, cruise and Driver Information Center
Lighting: Courtesy, cargo and glove box
Leather-wrapped shift knob
Full power top with remote activation, includes glass rear window with integral defroster (convertible)
Storage: Electric locking glove box, motorized hidden storage behind 8-inch diagonal touch-screen (includes USB port ⁵), center console and rear compartment with cover
GT bucket seats with Mulan leather seating surfaces and 8-way power adjusters
Floor console with two covered cup holders, two auxiliary power outlets, two USB ports ⁵ ; SD card reader, auxiliary input jack and storage
Premium carpeted floor mats
Illuminated visor vanity mirrors for driver and passenger
Console-mounted passenger assist handle
Chevrolet MyLink ⁶ Radio with 8-inch diagonal high-resolution color touch-screen display with motorized power up/down and hidden storage with USB ports ⁵ ; smartphone integration, Bluetooth audio streaming ⁴ ; Siri Eyes Free ⁷ ; Text Message Alerts ⁸ ; Gracenote database and natural language voice recognition
9-speaker Bose [®] sound system
SiriusXM Satellite Radio ⁹ with three trial months of the SiriusXM All Access Package featuring over 150 channels of satellite radio, including premium programming and access to over 150 channels of SiriusXM Internet radio on a computer, smartphone or tablet; SiriusXM NavTraffic ⁹ and Travel Link ⁹ are included with a three-month trial when the available Chevrolet MyLink ⁶ Radio with Navigation is selected
OnStar with 4G LTE and mobile Wi-Fi hotspot for up to seven devices ¹⁰ standard for 3 months or 3 GB (whichever comes first)
Color Head-Up Display with readouts for 4 modes, including Track mode with g-meter, vehicle speed and engine rpm

CORVETTE Z06 2LZ

 In addition to or replacing 1LZ features, 2LZ includes:

Color-keyed console, door armrests and instrument panel brow
Driver-side auto-dimming rearview mirror and inside auto-dimming frameless rearview mirror
Advanced theft-deterrent system
Universal Home Remote with 3-channel programmable transmitter for garage door opener, located on driver visor
10-speaker Bose [®] Centerpoint [®] surround sound system
SiriusXM Satellite Radio ⁹ with 12-month subscription of the SiriusXM All Access Package featuring over 150 channels of satellite radio, including premium programming and access to over 150 channels of SiriusXM Internet radio on a computer, smartphone or tablet; SiriusXM NavTraffic ⁹ and Travel Link ⁹ are included with a 12-month subscription when the available Chevrolet MyLink ⁶ Radio with Navigation is selected
Heated and ventilated driver and passenger seats with power bolster and power lumbar
Memory Package
Z06 seat badging
Luggage shade for coupe
Parcel net

CORVETTE Z06 3LZ

 In addition to or replacing 2LZ features, 3LZ includes:

Chevrolet MyLink ⁶ Radio with Navigation with 8-inch diagonal high-resolution color touch-screen display with motorized power up/down and hidden storage with USB ports ⁵ ; smartphone integration, Bluetooth audio streaming ⁴ ; Siri Eyes Free ⁷ ; Text Message Alerts ⁸ ; Gracenote database, natural language voice recognition and enhanced GPS navigation system with 12-month subscription of SiriusXM NavTraffic ⁹ and Travel Link ⁹ (available on 1LZ and 2LZ)
Performance Data Recorder (available on 1LZ and 2LZ)
Leather-wrapped and color-keyed instrument panel, door armrests and console
Napa leather seat inserts
Sueded Microfiber-Wrapped Upper Interior Trim Package includes sueded microfiber headliner, visors, trim above windshield and rear window, A-pillar trim, and area around quarter windows (coupe); sueded microfiber visors, trim above windshield and rear-window cover and A-pillar trim (convertible)

¹ Do not use summer-only tires in winter conditions, as it would adversely affect vehicle safety, performance and durability. Use only GM-approved tire and wheel combinations. Unapproved combinations may change the vehicle's performance characteristics. For important tire and wheel information, go to gmaccessorieszone.com or see your dealer. ² Always use safety belts and the correct restraint for your child's age and size. Even in vehicles equipped with the Passenger Sensing System, children are safer when properly secured in a rear seat in the appropriate infant, child or booster seat. Never place a rear-facing infant restraint in the front seat of any vehicle equipped with a passenger air bag. See the Owner's Manual and the child safety seat instructions for more safety information. ³ Visit onstar.com for coverage map, details and system limitations. Services vary by model and conditions. OnStar acts as a link to existing emergency service providers. Not all vehicles may transmit all crash data. ⁴ Go to gmtotalconnect.com to find out which phones are compatible with the vehicle. ⁵ Not compatible with all devices. ⁶ Full functionality requires compatible Bluetooth and smartphone, and USB connectivity for some devices. ⁷ Requires available Chevrolet MyLink and compatible iPhone running iOS 6 or later. ⁸ Requires a compatible smartphone with Bluetooth profile (M.A.P.) and applicable text messaging features. Visit gmtotalconnect.com for vehicle and smartphone eligibility. ⁹ If you subscribe after your trial period, subscriptions are continuous until you call SiriusXM to cancel. See SiriusXM Customer Agreement for complete terms at siriusxm.com. Other fees and taxes will apply. All fees and programming subject to change. For more information about NavTraffic, visit siriusxm.com/navtraffic. For more information about Travel Link, visit siriusxm.com/travellink. XM satellite service is available only in the 48 contiguous United States and D.C. ¹⁰ Devices must be WPA2-compliant with active OnStar service and data plan. Wi-Fi devices manufactured prior to 2006 may not be compatible. Please consult your device manufacturer for information regarding the WPA2 security protocol and Wi-Fi device compatibility. Visit onstar.com for details and system limitations.

STANDARD AND AVAILABLE FEATURES

	1LT	2LT	3LT	1LZ	2LZ	3LZ
AVAILABLE EQUIPMENT						
8-speed paddle-shift transmission with automatic mode and remote vehicle starter system	○	○	○	○	○	○
Z51 Performance Package	○	○	○	–	–	–
Performance exhaust with 4" polished stainless steel tips and aggressive exhaust sound	○ ¹	○ ¹	○ ¹	●	●	●
Magnetic Selective Ride Control with Performance Traction Management	○ ²	○ ²	○ ²	●	●	●
Battery Protection Package	○	○	○	○	○	○
Carbon Flash-painted spoiler and mirrors	○ ^{3,4}	○ ^{3,4}	○ ^{3,4}	○ ^{3,4}	○ ^{3,4}	○ ^{3,4}
Painted brake calipers: Dark Gray Metallic	● ⁵	● ⁵	● ⁵	○ ⁶	○ ⁶	○ ⁶
Black	○ ²	○ ²	○ ²	○ ⁷	○ ⁷	○ ⁷
Red	○	○	○	●	●	●
Yellow	○	○	○	○	○	○
Corvette Museum Delivery: Includes Corvette Museum logo plaque personalized with your name (acknowledgement form required)	○	○	○	○	○	○
Customer selectable VIN ending	○ ⁸	○ ⁸	○ ⁸	○ ⁸	○ ⁸	○ ⁸
Custom-made interior plaque personalized with your name	○	○	○	○	○	○
Competition Sport bucket seats	○	○	○	○	○	○
Competition Sport bucket seats with sueded microfiber inserts, includes sueded microfiber wrap for steering wheel and gearshift	○	○	○	○	○	○
GT bucket seats with sueded microfiber inserts	○	○	○	○	○	○
Carbon-fiber trim on the instrument panel	–	○	○	–	○	○
Chevrolet MyLink [®] Radio with Navigation	○ ¹⁰	○ ¹⁰	●	○ ¹⁰	○ ¹⁰	●
Performance Data Recorder and video recorder	○ ¹¹	○ ¹¹	●	○ ¹¹	○ ¹¹	●
Exterior vents painted in Shark Gray	○	○	○	○	○	○
Exterior vents painted body color	○ ¹²	○ ¹²	○ ¹²	○ ¹²	○ ¹²	○ ¹²
Carbon-fiber tonneau cover inserts (convertible)	○	○	○	○	○	○
WHEELS¹³						
5-spoke aluminum, Sterling Silver, 18" x 8.5" front and 19" x 10" rear	● ⁵	● ⁵	● ⁵	–	–	–
5-spoke aluminum, Black, 18" x 8.5" front and 19" x 10" rear	○ ⁵	○ ⁵	○ ⁵	–	–	–

● STANDARD ○ AVAILABLE – NOT AVAILABLE

	1LT	2LT	3LT	1LZ	2LZ	3LZ
WHEELS¹³ (CONTINUED)						
5-spoke machined-aluminum, Black, 18" x 8.5" front and 19" x 10" rear	○ ⁵	○ ⁵	○ ⁵	–	–	–
5-spoke aluminum, chrome, 18" x 8.5" front and 19" x 10" rear	○ ⁵	○ ⁵	○ ⁵	–	–	–
Z51 split 5-spoke aluminum, Sterling Silver, 19" x 8.5" front and 20" x 10" rear	● ³	● ³	● ³	–	–	–
Z51 split 5-spoke aluminum, Black, 19" x 8.5" front and 20" x 10" rear	○ ³	○ ³	○ ³	–	–	–
Z51 split 5-spoke machined-aluminum, Black, 19" x 8.5" front and 20" x 10" rear	○ ³	○ ³	○ ³	–	–	–
Z51 split 5-spoke aluminum, chrome, 19" x 8.5" front and 20" x 10" rear	○ ³	○ ³	○ ³	–	–	–
Z51 split 5-spoke aluminum, Satin Black with Red stripe, 19" x 8.5" front and 20" x 10" rear	–	○ ^{2,14}	○ ^{2,14}	–	–	–
Torque Directional aluminum, chrome, 19" x 8.5" front and 20" x 10" rear	–	○ ^{2,15}	○ ^{2,15}	–	–	–
Z06 aluminum, Pearl Nickel, 19" x 10" front and 20" x 12" rear	–	–	–	●	●	●
Z06 aluminum, Black, 19" x 10" front and 20" x 12" rear	–	–	–	○	○	○
Z06 machined-groove aluminum, Spectra Gray, 19" x 10" front and 20" x 12" rear	–	–	–	○	○	○
Z06 aluminum, chrome, 19" x 10" front and 20" x 12" rear	–	–	–	○	○	○
COUPE REMOVABLE ROOF PANEL OPTIONS						
One-piece body-color carbon-fiber roof panel	●	●	●	●	●	●
One-piece transparent roof panel	○	○	○	○	○	○
One-piece visible carbon-fiber roof panel with body-color surround	–	○	○	○	○	○
Body-Color Dual Roof Package: Body-color roof panel and transparent roof panel	–	○	○	–	○	○
Carbon-Fiber Dual Roof Package: Visible carbon-fiber roof panel with body-color surround and transparent roof panel	–	○	○	–	○	○
GRAPHICS						
Hood Stinger Stripe (Carbon Flash or Cyber Gray) ¹⁶	○	○	○	○	○	○
Full-Length Dual Racing Stripe Package (Blade Silver, Carbon Flash, Crystal Red, Cyber Gray or Inferno Orange) ¹⁷	○	○	○	○	○	○

	1LT	2LT	3LT	1LZ	2LZ	3LZ
PACKAGES						
Z51 Performance Package	○	○	○	–	–	–
Split 5-spoke aluminum wheels in Sterling Silver (19" front and 20" rear); dry-sump oil system; performance gear ratios; e-LSD; larger front brakes (13.6" vs. 12.6") with Black calipers; slotted brake rotors; specific shocks, springs and stabilizer bars; performance exhaust, differential and transmission cooling; heavy-duty engine cooling; Aero Package that reduces lift for high-speed stability; and specific Michelin [®] Pilot [®] Super Sport ZP summer-only tires ¹⁸ (unique and aggressively tuned to provide outstanding handling, grip and road-holding capability)						
Carbon Flash Badge Package	○	○	○	●	●	●
Chrome Badge Package	●	●	●	○	○	○
ZF1 Appearance Package	○ ⁵	○ ⁵	○ ⁵	–	–	–
Split 5-spoke aluminum wheels in Sterling Silver (19" front and 20" rear), P245/35ZR19 front and P285/30ZR20 rear summer-only performance tires ¹⁸ and body-color Z51-style spoiler						
Painted Carbon Fiber Ground Effects Package	○	○	○	○	○	○
Carbon Flash-painted carbon-fiber splitter and rockers, and more aggressive rear spoiler (late availability for Stingray)						
Visible Carbon Fiber Ground Effects Package	–	–	–	○	○	○
Visible carbon-fiber splitter and rockers, and more aggressive rear spoiler						
Z07 Performance Package	–	–	–	○ ¹⁹	○ ¹⁹	○ ¹⁹
Carbon ceramic brakes, Z07 suspension with Magnetic Selective Ride Control, front P285/30ZR19 and rear P335/25ZR20 Michelin Pilot Super Sport Cup 2 run-flat summer-only tires ¹⁸ ; Splitter End Plates Package and clear adjustable wicker bill						
Pacific Design Package	–	○ ²	○ ²	–	–	–
Carbon Flash Full-Length Dual Racing Stripe Package, Carbon Flash Badge Package, Carbon Flash rear license plate holder, Carbon Flash-painted outside mirrors and rear spoiler, Z51-style aluminum wheels in Satin Black with Red stripe (19" front and 20" rear), wheel center caps with Stingray logo, Gray indoor vehicle cover with crossed-flags logo, front and rear Black molded splash guards, Red-painted calipers, Competition Sport bucket seats, carbon-fiber instrument panel trim, custom sill plates with Stingray logo, and premium carpeted floor mats with Stingray logo (coupe only); available with Jet Black or Adrenaline Red interior colors and Shark Gray Metallic, Arctic White, Blade Silver Metallic or Torch Red exterior colors						
Atlantic Design Package	–	○ ²	○ ²	–	–	–
Anthracite front splitter, underhood liner with Stingray logo, Black indoor vehicle cover with Stingray logo, Carbon Flash rear license plate holder, Torque Directional aluminum wheels in chrome (19" front and 20" rear), wheel center caps with Stingray logo, Black and Silver Custom Valve Stem Package with crossed-flags logo, Shark Gray Metallic tonneau cover inserts, front and rear Black molded splash guards, rear fascia protector, Shark Gray Metallic-painted exterior vents, Fusion Gray Hood Stinger Stripe Package, Custom Corvette luggage, premium carpeted floor mats with Stingray logo, and Genuine Corvette Accessories (convertible only)						

¹ Included with available Z51 Performance Package. ² Requires available Z51 Performance Package. ³ Requires available Z51 Performance Package or available ZF1 Appearance Package. ⁴ Not available with Black exterior color. ⁵ Not available with Z51 Performance Package. ⁶ Requires available Z07 Performance Package. ⁷ Not available with Z07 Performance Package. ⁸ Not available on all VINs. Subject to restrictions and approval. Available on sold orders only. ⁹ Full functionality requires compatible Bluetooth and smartphone, and USB connectivity for some devices. ¹⁰ Requires available Performance Data Recorder. ¹¹ Requires available Chevrolet MyLink Radio with Navigation. ¹² Not available with Shark Gray Metallic or Black exterior colors. ¹³ These wheels are paired with summer-only tires. Do not use summer-only tires in winter conditions, as it would adversely affect vehicle safety, performance and durability. Use only GM-approved tire and wheel combinations. Unapproved combinations may change the vehicle's performance characteristics. For important tire and wheel information, go to gmaccessorieszone.com or see your dealer. ¹⁴ Requires available Pacific Design Package. ¹⁵ Requires available Atlantic Design Package. ¹⁶ Not available with any other stripe packages or with Shark Gray Metallic exterior color. ¹⁷ Not available with any other stripe packages. ¹⁸ Do not use summer-only tires in winter conditions, as it would adversely affect vehicle safety, performance and durability. Use only GM-approved tire and wheel combinations. Unapproved combinations may change the vehicle's performance characteristics. For important tire and wheel information, go to gmaccessorieszone.com or see your dealer. ¹⁹ Requires available Carbon Fiber Ground Effects Package.

COLORS



BLACK



NIGHT RACE BLUE METALLIC



LAGUNA BLUE TINTCOAT¹



TORCH RED



CRYSTAL RED TINTCOAT¹



DAYTONA SUNRISE ORANGE METALLIC¹



VELOCITY YELLOW TINTCOAT¹



SHARK GRAY METALLIC



BLADE SILVER METALLIC



ARCTIC WHITE

CONVERTIBLE TOP COLORS



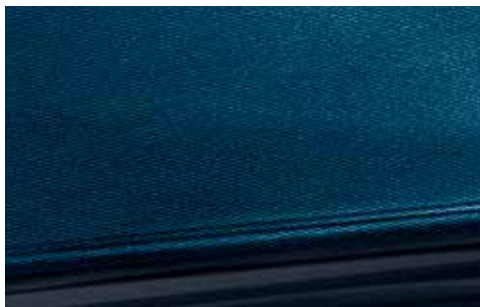
Black



Kalahari



Gray



Blue

RECOMMENDED COLOR COMBINATIONS

INTERIOR COLORS (1LT, 2LT, 3LT, 1LZ, 2LZ, 3LZ)

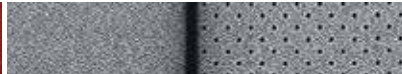
EXTERIOR COLORS	INTERIOR COLORS (1LT, 2LT, 3LT, 1LZ, 2LZ, 3LZ)						
	CONVERTIBLE TOP COLORS		● BLACK	● KALAHARI	● GRAY	● BLUE	
	JET BLACK 1LT, 2LT, 3LT, 1LZ, 2LZ, 3LZ	GRAY 1LT, 2LT, 3LT	BROWNSTONE 3LT	KALAHARI 2LT, 3LT, 2LZ, 3LZ	ADRENALINE RED 1LT, 2LT, 3LT, 1LZ, 2LZ, 3LZ	DARK GRAY 1LZ, 2LZ, 3LZ	BLUE 3LZ
Black	● ● ● ●	● ● ●	● ●	● ●	●	● ● ●	● ● ●
Night Race Blue Metallic	● ● ● ●	● ● ●	● ● ●	● ● ●	–	● ● ●	● ● ●
Laguna Blue Tintcoat ¹	● ● ●	● ●	● ●	● ●	–	● ●	–
Torch Red	● ● ●	● ●	● ●	● ●	●	● ●	–
Crystal Red Tintcoat ¹	● ●	● ●	● ●	● ●	●	● ●	–
Daytona Sunrise Orange Metallic ¹	● ●	●	● ●	● ●	–	●	–
Velocity Yellow Tintcoat ¹	●	● ●	●	●	–	● ●	–
Shark Gray Metallic	● ● ● ●	● ● ●	● ●	● ●	●	● ● ●	● ● ●
Blade Silver Metallic	● ● ● ●	● ● ●	● ●	● ●	●	● ● ●	● ● ●
Arctic White	● ● ● ●	● ● ●	● ● ●	● ● ●	●	● ● ●	● ● ●

¹ Extra-cost color.

INTERIOR CONFIGURATIONS (SELECT EXAMPLES SHOWN)



Adrenaline Red Leather (1LT)



Gray Leather (1LT)



Jet Black Leather (1LT)



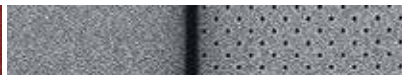
Black Leather/Sueded Microfiber Inserts
with Available Competition Sport Seats¹ (1LT)



Dark Gray Leather (1LZ)



Adrenaline Red Leather (2LT)



Gray Leather (2LT)



Jet Black Leather (2LT)



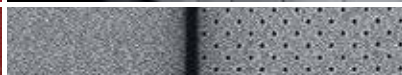
Kalahari Leather (2LT)



Brownstone Leather (3LT)



Adrenaline Red Leather (3LT)



Gray Leather/Sueded Microfiber Inserts
with Available Competition Sport Seats¹ (3LT)



Kalahari Leather/Sueded Microfiber Inserts
with Available Competition Sport Seats¹ (3LT)



Dark Gray Leather (3LZ)



Blue Leather (3LZ)

¹ Includes sueded microfiber-wrapped steering wheel and shifter.

CALIPER COLORS



Dark Gray Metallic calipers, standard on Stingray (not available with Z51 Performance Package) and available on Z06 (requires Z07 Performance Package)



Black calipers with Brembo® slotted brakes for Stingray with available Z51 Performance Package (shown) and Z06 (not available with Z07 Performance Package)



Available Red calipers with Brembo slotted brakes for Stingray (Z51 Performance Package shown) (standard on Z06)



Available Yellow calipers with Brembo slotted brakes for Stingray and Z06 (Z51 Performance Package shown)

STINGRAY WHEELS¹



18" x 8.5" Front and 19" x 10" Rear 5-Spoke Aluminum Wheel in Sterling Silver



18" x 8.5" Front and 19" x 10" Rear 5-Spoke Aluminum Wheel in Black



18" x 8.5" Front and 19" x 10" Rear 5-Spoke Machined-Aluminum Wheel in Black



18" x 8.5" Front and 19" x 10" Rear 5-Spoke Aluminum Wheel in Chrome

ACCESSORY WHEELS¹



19" x 8.5" Front and 20" x 10" Rear Aluminum Torque Directional Wheel in Silver



19" x 8.5" Front and 20" x 10" Rear Aluminum Torque Directional Wheel in Chrome

STINGRAY WHEELS¹ WITH Z51 PERFORMANCE PACKAGE OR ZF1 APPEARANCE PACKAGE



19" x 8.5" Front and 20" x 10" Rear Split 5-Spoke Aluminum Wheel in Sterling Silver



19" x 8.5" Front and 20" x 10" Rear Split 5-Spoke Aluminum Wheel in Black



19" x 8.5" Front and 20" x 10" Rear Split 5-Spoke Machined-Aluminum Wheel in Black



19" x 8.5" Front and 20" x 10" Rear Split 5-Spoke Aluminum Wheel in Chrome



19" x 8.5" Front and 20" x 10" Rear Z51 Performance Package Split 5-Spoke Aluminum Wheel in Satin Black with Red Stripe

Z06 WHEELS¹



19" x 10" Front and 20" x 12" Rear Z06 Aluminum Wheel in Pearl Nickel



19" x 10" Front and 20" x 12" Rear Z06 Aluminum Wheel in Black



19" x 10" Front and 20" x 12" Rear Z06 Machined-Groove Aluminum Wheel in Spectra Gray



19" x 10" Front and 20" x 12" Rear Z06 Aluminum Wheel in Chrome

¹ These wheels are paired with summer-only tires. Do not use summer-only tires in winter conditions, as it would adversely affect vehicle safety, performance and durability. Use only GM-approved tire and wheel combinations. Unapproved combinations may change the vehicle's performance characteristics. For important tire and wheel information, go to gmaccessorieszone.com or see your dealer.

Corvette Stingray coupe in Shark Gray Metallic with available Z51 Performance Package featuring Michelin® Pilot® Super Sport ZP summer-only tires!¹



¹ These wheels are paired with summer-only tires. Do not use summer-only tires in winter conditions, as it would adversely affect vehicle safety, performance and durability. Use only GM-approved tire and wheel combinations. Unapproved combinations may change the vehicle's performance characteristics. For important tire and wheel information, go to gmaccessorieszone.com or see your dealer.

MAXIMUM CAPACITIES

	STINGRAY	Z06
EPA-ESTIMATED FUEL ECONOMY (MPG CITY/HIGHWAY)	17/29 manual 16/29 automatic	Official EPA estimates not yet available Official EPA estimates not yet available
FUEL TANK (APPROXIMATE)	18.5 gal./70 L	18.5 gal./70 L
LUGGAGE CAPACITY	15 cu. ft./425 L (coupe) 10 cu. ft./283 L (convertible)	15 cu. ft./425 L (coupe) 10 cu. ft./283 L (convertible)

OWNERSHIP EXTRAS



CHEVROLET.COM/WARRANTY



CHEVROLET.COM/ACCESSORIES



ONSTAR.COM



SIRIUSXM.COM

WARRANTY

100,000-MILE/5-YEAR TRANSFERABLE POWERTRAIN LIMITED WARRANTY Every 2015 Chevrolet passenger car, light-duty truck, SUV and crossover comes with a 100,000-mile/5-year (whichever comes first) transferable Powertrain Limited Warranty. Plus, you get 100,000 miles/5 years (whichever comes first) of the 24/7 Roadside Assistance Program, the Courtesy Transportation Program, and much more. See dealer for details.

NEW VEHICLE LIMITED WARRANTY GM vehicles registered in the USA are covered for 36,000 miles/3 years (whichever comes first). The complete vehicle is covered, including tires, towing to your nearest Chevrolet dealership and cosmetic corrosion resulting from defects. Repairs will be made to correct any vehicle defect, and most warranty repairs will be made at no charge. In addition, rust-through corrosion will be covered for 100,000 miles/6 years (whichever comes first). See dealer for details.

IMPORTANT INFORMATION

CHEVROLET OWNER CENTER (MY.CHEVROLET.COM) Everything you need to know. Anything you need to do. Your Chevrolet Owner Center makes it easy. Create your account today to get the most out of your new vehicle. Get special alerts and offers, schedule service, review your maintenance schedule, and view how-to videos specifically for your vehicle. All online, anytime. Visit the Owner Center today to register or take a tour.

CHEVROLET COMPLETE CARE Every new 2015 Chevrolet Corvette comes with 2 years/24,000 miles of scheduled maintenance that includes oil and filter changes and multipoint vehicle inspections. Covers only scheduled oil changes with filter according to your new vehicle's recommended maintenance schedule for up to 2 years or 24,000 miles, whichever comes first. Does not include air filters. Maximum of four service events. See participating dealer for other restrictions and complete details.

ENGINES Chevrolet products are equipped with engines produced by GM Powertrain or other suppliers to GM worldwide. The engines in Chevrolet products may also be used in other GM makes and models.

ASSEMBLY Chevrolet vehicles and their components are assembled or produced by different operating units of General Motors, its subsidiaries or suppliers to GM worldwide. We sometimes find it necessary to produce Chevrolet vehicles with different or differently sourced components than originally scheduled. Since some options may be unavailable when your vehicle is assembled, we suggest you verify that your vehicle includes the equipment you ordered and that, if there were changes, they are acceptable to you.

ONSTAR OnStar services require vehicle electrical system (including battery), wireless service and GPS satellite signals to be available and operating for features to function properly. OnStar acts as a link to existing emergency service providers. Subscription Service Agreement required. Call 1-888-4ONSTAR (1-888-466-7827) or visit onstar.com for OnStar Terms and Conditions, Privacy Policy, details and system limitations.

A NOTE ON CHILD SAFETY Always use safety belts and the correct restraint for your child's age and size. Even in vehicles equipped with the Passenger Sensing System, children are safer when properly secured in a rear seat in the appropriate infant, child or booster seat. Never place a rear-facing infant restraint in the front seat of any vehicle equipped with a passenger air bag. See the Owner's Manual and child safety seat instructions for more safety information.

IMPORTANT WORDS ABOUT THIS CATALOG We have tried to make this catalog comprehensive and factual. We reserve the right, however, to make changes at any time, without notice, in prices, colors, materials, equipment, specifications, models and availability. Specifications, dimensions, measurements, ratings and other numbers in this catalog and other printed materials provided at the dealership or affixed to vehicles are approximations based on design and engineering drawings, prototypes

and laboratory tests. Your vehicle may differ due to variations in manufacture and equipment. Since some information may have been updated since the time of printing, please check with your Chevrolet dealer for complete details. Chevrolet reserves the right to lengthen or shorten the model year for any product for any reason or to start and end model years at different times. Certain vehicle features may lose their usefulness over time due to obsolescence from technological changes. Unless otherwise noted, all claims based on GM Luxury Sports Car segment and latest available competitive information. Excludes other GM vehicles.

TIRES Corvette Stingray is equipped with run-flat Michelin® ZP summer-only tires¹ that eliminate the need for a spare. The tire design enables safe function during and after loss of pressure for some distance at a moderate speed. The shorter the distance that you drive with loss of pressure, the better the chance that the tire can be repaired. As soon as possible, contact Roadside Assistance for the nearest authorized GM or run-flat tire servicing facility and have the tire inspected. See your Owner's Manual. Corvette tires tend to wear faster and are more susceptible to damage from road hazards or curb impact than standard profile tires. This type of damage is not covered by the GM New Vehicle Limited Warranty.

CHEVROLET OWNERSHIP EXPERIENCE Chevrolet is committed to enhancing the vehicle shopping and ownership experience through a wide array of programs. Visit chevrolet.com to build and price, find a vehicle, request a quote, compare vehicles, find financial tools or track your vehicle order. You'll also find information about 24-hour Roadside Assistance, Courtesy Transportation, Customer Assistance, GM Mobility, safety and current incentives.

GENUINE CORVETTE ACCESSORIES (CHEVROLET.COM/CORVETTE) Enhance the appearance or extend the functionality of your Corvette. Genuine Corvette Accessories are covered by the GM New Vehicle Limited Warranty and are designed for performance, durability and safety. Genuine Corvette Accessories permanently installed at the time of new vehicle delivery are covered under the GM New Vehicle Limited Warranty. If installed after delivery, coverage (parts and labor) is for the balance of the GM New Vehicle Limited Warranty or a minimum of 12 months/12,000 miles (whichever comes first). See your Chevrolet dealer or visit chevrolet.com/corvette.

CHEVROLET.COM/SAFETY Chevrolet is committed to keeping you and your family safe – from the start of your journey to your destination. That's why every Chevrolet is designed with a comprehensive list of safety and security features to help give you peace of mind.

THE BUYPOWER CARD The Chevrolet BuyPower Card – Every purchase you make with the BuyPower Card from Capital One* helps you earn toward an eligible new Chevrolet, Buick, GMC or Cadillac vehicle. There's no limit on the amount you can earn or redeem, and your Earnings don't expire. Visit chevroletbuypowercard.com/catalogs.

* Capital One, N.A. is the issuer of the BuyPower Card. General Motors ("GM") is responsible for the operation and administration of the Earnings program.



TWITTER.COM/CHEVROLET



YOUTUBE.COM/CHEVROLET



FACEBOOK.COM/CHEVROLET

GM, the GM logo, Chevrolet, the Chevrolet logo, and the slogans, emblems, vehicle model names, vehicle body designs and other marks appearing in this catalog are the trademarks and/or service marks of General Motors, its subsidiaries, affiliates or licensors. ©2014 OnStar. All rights reserved. SiriusXM and all related marks and logos are trademarks of Sirius XM Radio Inc. Bose and Centerpoint are registered trademarks of the Bose Corp. The Bluetooth word mark is a registered trademark owned by Bluetooth SIG, Inc., and any use of such mark by Chevrolet is under license. Brembo is a registered trademark of Brembo S.p.A. Michelin and Pilot are registered trademarks of Michelin North America, Inc.

©2014 General Motors. All rights reserved. October 2014

¹ Do not use summer-only tires in winter conditions, as it would adversely affect vehicle safety, performance and durability. Use only GM-approved tire and wheel combinations. Unapproved combinations may change the vehicle's performance characteristics. For important tire and wheel information, go to gmaccessorieszone.com or see your dealer.