

CORVETTE 2018

CHEVROLET



THE FIRST CORVETTE IN 1953 MIGHT HAVE BEEN MORE DREAM CAR THAN SPORTS CAR, YET THE MERE IDEA OF A CHEVROLET SPORTS CAR IGNITED A LOVE AFFAIR THAT STILL BURNS BRIGHTLY TODAY.

FROM THOSE EARLY YEARS, CORVETTE BECAME A TEST BED FOR BOLD DESIGN, NEW TECHNOLOGY, AND EVER-INCREASING LEVELS OF PERFORMANCE. IT OFTEN SET THE AGENDA FOR TECHNICAL ADVANCES WE TAKE FOR GRANTED TODAY.

THE CORVETTE WOULD ALSO BECOME A WAY OF LIFE, INSPIRING MILLIONS OF DEVOTEES AROUND THE WORLD. DURING IT ALL, CORVETTE REMAINS TRUE TO ITS MISSION AS A TWO-SEAT SPORTS CAR DESIGNED TO MOVE PEOPLE LIKE NO OTHER CAR IN THE WORLD.



CORVETTE GRAND SPORT COUPE. Shown in Admiral Blue. Also shown: CORVETTE STINGRAY COUPE in Blade Silver Metallic and CORVETTE Z06 COUPE in Corvette Racing Yellow Tintcoat (extra-cost color). All shown with available features.



STINGRAY COUPE.

PURE SPORTS CAR JOY. WITH ITS SPLIT-WINDOW-INSPIRED FASTBACK STYLE DRAPED OVER A PERFECTLY BALANCED CHASSIS AND PRECISION-CRAFTED INTERIOR, STINGRAY COUPE IS A MODERN INTERPRETATION OF THE CORVETTE LEGACY.

CORVETTE STINGRAY COUPE. Shown in Blade Silver Metallic with available features.

STINGRAY CONVERTIBLE.

SACRIFICE NOTHING. ENGINEERED
FROM THE GROUND UP AS A
CONVERTIBLE, THIS STINGRAY IS
EVERY BIT AS TIGHT AND
RESPONSIVE AS THE COUPE.



CORVETTE STINGRAY CONVERTIBLE. Shown in Black with available features.

GRAND SPORT COUPE.

WITH A NATURALLY ASPIRATED
460-HORSEPOWER V8 ENGINE,
WIDE BODY STANCE AND MAGNETIC
SELECTIVE RIDE CONTROL™
SUSPENSION, GRAND SPORT IS AS
AT HOME ON A RACE TRACK AS
IT IS ON A CHALLENGING ROAD.



CORVETTE GRAND SPORT COUPE. Shown in Torch Red with available features.

GRAND SPORT CONVERTIBLE.

THE CORVETTE GRAND SPORT CONVERTIBLE OFFERS SUPERB BALANCE FOR HIGH-SPEED GRAND TOURING, THANKS TO A PERFORMANCE-TUNED SUSPENSION, 6-PISTON FRONT BRAKE CALIPERS AND 19" x 10" FRONT AND 20" x 12" REAR GRAND SPORT-SPECIFIC WHEELS (PAIRED WITH SUMMER-ONLY TIRES)!

CORVETTE GRAND SPORT CONVERTIBLE. Shown in Black Rose Metallic (extra-cost color) with available features.



¹ Do not use summer-only tires in winter conditions, as it would adversely affect vehicle safety, performance and durability. Use only GM-approved tire and wheel combinations. Unapproved combinations may change the vehicle's performance characteristics. For important tire and wheel information, go to my.chevrolet.com/learnAbout/chevrolettires or see your dealer.

Z06 COUPE AND CONVERTIBLE.

CODEVELOPED WITH THE CORVETTE C7.R RACE CAR, Z06 IS THE FASTEST, MOST POWERFUL PRODUCTION CORVETTE EVER. IF THAT'S NOT ENOUGH, THE 650-HORSEPOWER Z06 CONVERTIBLE GIVES YOU THE WIDE-OPEN THRILLS OF A SCREAMING SUPERBIKE.

CORVETTE Z06 CONVERTIBLE. Shown in Arctic White with available features.





CORVETTE Z06 COUPE. Shown in Blade Silver Metallic with available features.

CORVETTE CARBON 65 EDITION.

THIS LIMITED EDITION BRINGS SOME 65 YEARS OF RACING TECHNOLOGY TO THE STREET. AVAILABLE ON GRAND SPORT 3LT AND Z06 3LZ, CARBON 65 IS TRUE TO ITS NAME WITH A CARBON-FIBER REAR SPOILER AND QUARTER DUCTS AND A CARBON-FIBER-RIM STEERING WHEEL. CERAMIC MATRIX GRAY METALLIC PAINT WITH BLUE ACCENTS OUTSIDE AND BLACK SUEDED MICROFIBER INSERTS WITH BLUE STITCHING INSIDE MAKE A UNIQUE DESIGN STATEMENT. ONLY 650 UNITS WILL BE BUILT, EACH ONE WITH A NUMBERED PLAQUE.



CORVETTE Z06 COUPE AND GRAND SPORT
CONVERTIBLE CARBON 65 EDITIONS. Shown in
Ceramic Matrix Gray Metallic with available features.



**“THE GRAND SPORT TAKES WHAT CHEVY CALLS A ‘PURIST’
APPROACH, A THIRD WAY BETWEEN GRAND-TOURING
CORVETTE STINGRAYS AND SUPERCAR-TAUNTING Z06s.”**

– MOTORAUTHORITY



THE ELEGANCE DEEP WITHIN.

ONE OF THE SIMPLEST, MOST JEWEL-LIKE ENGINES EVER CREATED IS THE SMALL BLOCK V8 THAT HAS BEEN THE SOUL OF CORVETTE SINCE 1955. IT IS OFFERED IN TWO CONFIGURATIONS – THE NORMALLY ASPIRATED 455-HORSEPOWER 6.2L LT1 V8 AND THE SUPERCHARGED 650-HORSEPOWER 6.2L LT4 V8.

DIRECT INJECTION. Moves fuel delivery closer to the cylinder, enabling a higher compression ratio and greater combustion efficiency. As a result, less fuel is required to deliver the equivalent horsepower of a conventional port injection fuel system.

ACTIVE FUEL MANAGEMENT™ (AFM). This system temporarily deactivates four cylinders for better fuel economy and seamlessly reactivates them when the driver demands full power. It contributes to an EPA-estimated 25 MPG highway¹ with the available 8-speed paddle-shift automatic transmission.

VARIABLE VALVE TIMING. Optimizes camshaft timing to improve high-rpm horsepower and low-end torque. An intelligent position sensor adjusts the timing of intake and exhaust valves.

HIGH-STRENGTH, LIGHTWEIGHT MATERIALS. Engine blocks and cylinder heads are cast-aluminum. Intake valves are titanium in the LT4 or hollow stem for the LT1. Exhaust valves are sodium-filled for excellent cooling ability.

OIL SPRAY PISTON COOLING. Eight oil-spraying jets drench the underside of each piston and the surrounding cylinder walls with an extra layer of cooling, friction-reducing oil.

DRY-SUMP OIL SYSTEM. This racing-derived technology prevents oil starvation on high-g corners and is included on Stingray with available Z51 Performance Package, Grand Sport and Z06.

¹ EPA estimate for Corvette Stingray and Grand Sport with 6.2L V8 engine and 8-speed paddle-shift automatic transmission.



650-HORSEPOWER LT4 SUPERCHARGED V8 ENGINE. Standard on Z06.

BUILDING ON A ROCK-SOLID FOUNDATION.

CORVETTE ENGINEERS STARTED AT THE CORE, CONSTRUCTING A RIGID ALUMINUM FRAME WITH CARBON-NANO-COMPOSITE UNDERBODY PANELS. THESE MATERIALS CONTRIBUTE TO A NEAR 50/50 WEIGHT BALANCE AND AN ENHANCED POWER-TO-WEIGHT RATIO. THEN THEY DEVELOPED A HOST OF STRATEGIES TO CONNECT THE POWER TO THE GROUND.

7-SPEED MANUAL GEARBOX WITH ACTIVE REV MATCHING. This technology sends a signal from the transmission to the engine controller, allowing control of engine rpm to eliminate the need for heel/toe shifting while delivering optimum smoothness and balance. System can be enabled or disabled by using the paddles on the steering wheel.

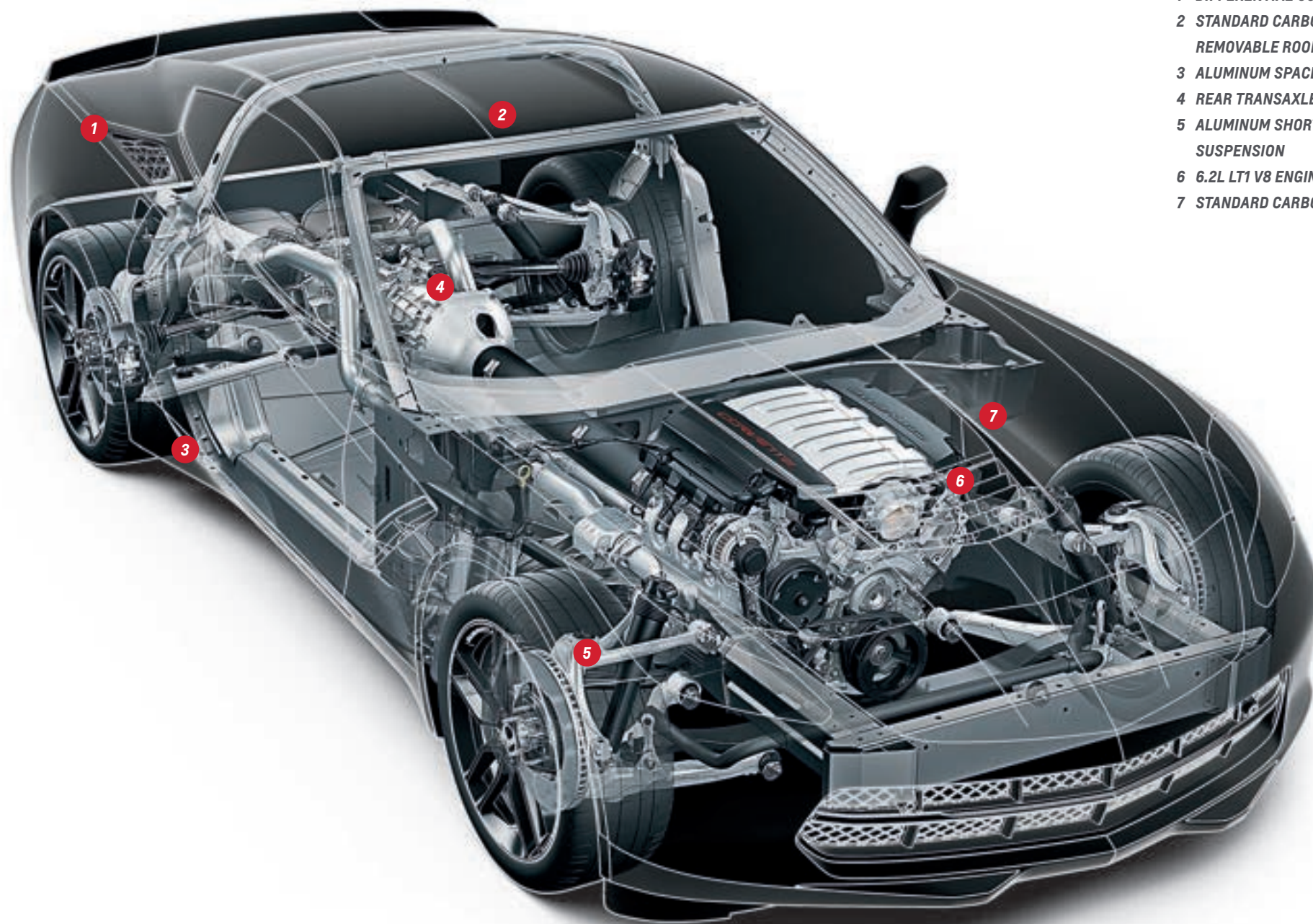
AVAILABLE 8-SPEED PADDLE-SHIFT AUTOMATIC TRANSMISSION. There's nothing lost with this automatic, which offers smooth control with quick, precise shifts that rival its dual-clutch competitors. Plus, you have the advantages of an automatic when you need it.

PERFORMANCE EXHAUST. Standard on Grand Sport and Z06, this available system on Stingray increases horsepower from 455 to 460. The exhaust sound character changes with Tour, Sport and Track modes using variable valves.

ELECTRONIC LIMITED-SLIP DIFFERENTIAL. Continuously modulates torque split to maximize traction and acceleration out of corners, enhancing stability and turn-in responsiveness. Included in the available Z51 Performance Package and standard on Grand Sport and Z06.

LAUNCH CONTROL. Standard on all models, this technology regulates ignition timing to limit wheel spin for more consistent acceleration runs.

PERFORMANCE TRACTION MANAGEMENT. Five settings of torque reduction and brake intervention facilitate maximum grip. Standard on Grand Sport and Z06 and available on Stingray equipped with the Z51 Performance Package and Magnetic Selective Ride Control.



- 1 DIFFERENTIAL COOLING VENT
- 2 STANDARD CARBON-FIBER
REMOVABLE ROOF PANEL
- 3 ALUMINUM SPACE FRAME
- 4 REAR TRANSAXLE
- 5 ALUMINUM SHORT/LONG ARM
SUSPENSION
- 6 6.2L LT1 V8 ENGINE
- 7 STANDARD CARBON-FIBER HOOD



FOR MORE INFORMATION ABOUT DRIVER MODES, PLEASE VISIT CHEVY.COM/CORVETTE-LIFE/MODE-SELECTOR.

TURN THE DIAL, CHANGE THE CAR.

WHERE ARE YOU GOING TO DRIVE TODAY? THE DRIVER MODE SELECTOR LETS YOU CHOOSE ONE OF FIVE DISTINCT DRIVING MODES. THE SYSTEM INCREASES YOUR OPERATIONAL BANDWIDTH DRAMATICALLY, CONTROLLING UP TO 12 PERFORMANCE VARIABLES.

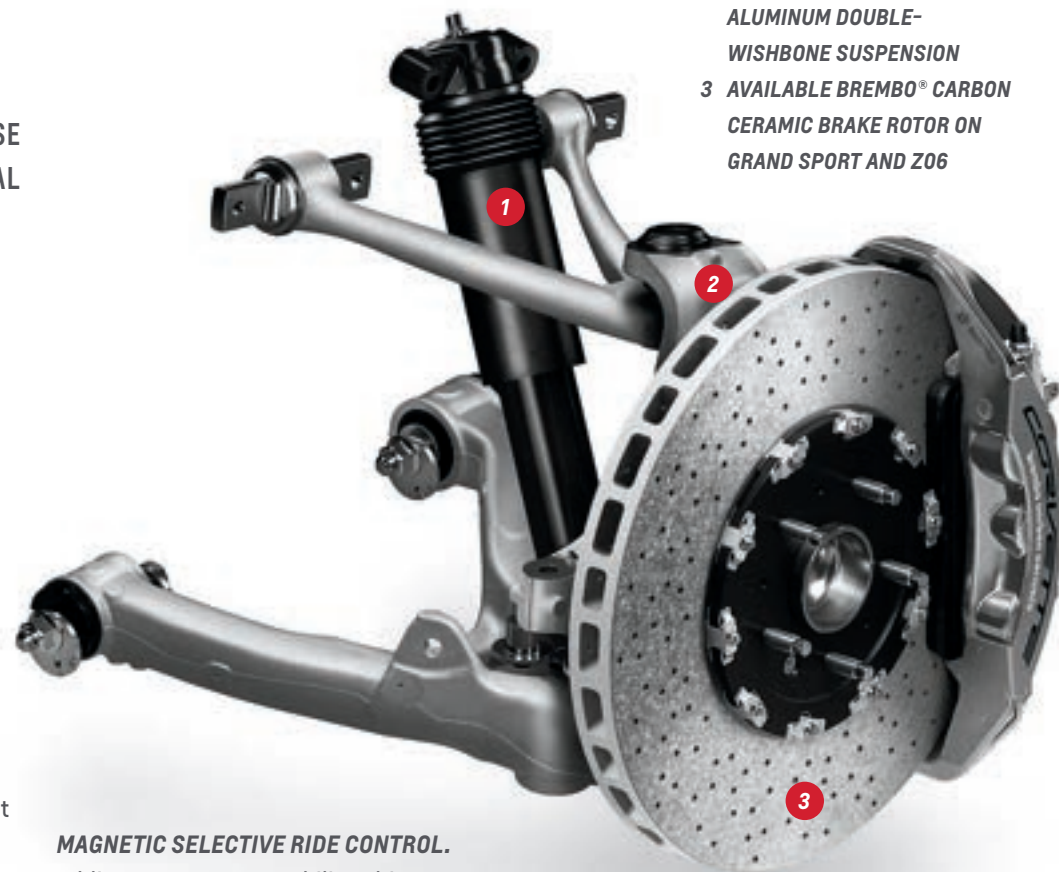
TOUR MODE. Tour Mode is the default setting for everyday driving that enhances comfort. The customizable gauge cluster can display audio, navigation¹ (with active OnStar service) and phone data.

WEATHER MODE. In inclement weather, the vehicle senses and adapts to road conditions, distributing appropriate power to the rear wheels. Tailored Traction Control and throttle progression promote more confident driving in rain or snow.

ECO MODE. To reduce engine workload and conserve fuel², Eco Mode maximizes Active Fuel Management to limit power when traveling at cruising speeds. Fuel economy is automatically optimized until aggressive acceleration is called for.

SPORT MODE. Cluster configuration shows traditional Corvette tach and performance gauges. Steering effort and available Magnetic Selective Ride Control damping are stiffened but tempered. The sound from the available performance exhaust becomes more aggressive.

TRACK MODE. This mode enables launch control to provide maximum off-the-line acceleration. Steering effort and available Magnetic Selective Ride Control damping adjust to supply maximum responsiveness. Available Performance Traction Management is enabled. Throttle progression optimizes for track performance. Gauge configuration offers a GTLM (GT Le Mans) Corvette Racing-inspired display complete with shift lights and lap timer. The lap timer is linked to the available Performance Data Recorder, if equipped.



- 1 AVAILABLE MAGNETIC SELECTIVE RIDE CONTROL DAMPER
- 2 SHORT/LONG ARM ALUMINUM DOUBLE-WISHBONE SUSPENSION
- 3 AVAILABLE BREMBO® CARBON CERAMIC BRAKE ROTOR ON GRAND SPORT AND Z06

MAGNETIC SELECTIVE RIDE CONTROL.

Adding even more capability, this system “reads” the road every millisecond and changes damping in just 10 to 15 milliseconds in shocks filled with a magnetorheological fluid containing minute iron particles. It’s standard on Grand Sport and Z06 and available on Stingray.

¹ Map coverage available in the United States, Puerto Rico and Canada. ² EPA-estimated MPG city/highway: Stingray and Grand Sport with 7-speed manual 16/25, with 8-speed automatic 15/25; Z06 with 7-speed manual 15/22, with 8-speed automatic 13/23.

CORVETTE STINGRAY. SAME LEGEND. LATEST CHAPTER.

THE 2018 CORVETTE STINGRAY IS A TECHNOLOGICAL MASTERPIECE FOR THE MODERN ERA. EVERY ASPECT OF THIS CAR IS INTELLIGENTLY MANAGED, FROM HOW IT USES AIRFLOW FOR COOLING AND DOWNFORCE TO HOW IT PRODUCES ASTOUNDING PERFORMANCE WITH SURPRISINGLY EXCELLENT EFFICIENCY!

AVAILABLE Z51 PERFORMANCE PACKAGE.

For spirited road driving or track days.

It includes:

DRY-SUMP OIL SYSTEM

PERFORMANCE GEAR RATIOS

ELECTRONIC LIMITED-SLIP DIFFERENTIAL (eLSD)

**LARGER FRONT BRAKES (13.6-INCH VS. 12.6-INCH)
WITH BLACK CALIPERS**

SLOTTED BRAKE ROTORS

**SPECIFIC SHOCKS, SPRINGS AND
STABILIZER BARS**

PERFORMANCE EXHAUST

DIFFERENTIAL AND TRANSMISSION COOLING

HEAVY-DUTY ENGINE COOLING

REAR SPOILER INCLUDED IN AERO PACKAGE



¹ EPA-estimated MPG city/highway: Stingray and Grand Sport with 7-speed manual 16/25, with 8-speed automatic 15/25; Z06 with 7-speed manual 15/22, with 8-speed automatic 13/23.

CORVETTE STINGRAY COUPE. Shown in Admiral Blue with available Z51 Performance Package.

GRAND SPORT. MAKE YOUR OWN HISTORY.

GRAND SPORT REPRESENTS THE SWEET SPOT FOR MANY CORVETTE ENTHUSIASTS. PROPELLED BY A ROARING LT1 V8, IT COMES WITH A DRY-SUMP OIL SYSTEM AND Z06 STABILIZER BARS AND SPRINGS. BRAKES ARE 6-PISTON FRONTS WITH 14.6-INCH SLOTTED ROTORS AND 4-PISTON REARS WITH 14.4-INCH SLOTTED ROTORS. A WIDER TRACK, GRAND SPORT-SPECIFIC WHEELS AND THE GRAND SPORT BADGE ENSURE IT HAS A LOOK ALL ITS OWN.



CORVETTE GRAND SPORT COUPE. Shown in Admiral Blue with available Z07 Performance Package, Visible Carbon Fiber Ground Effects Package and other available features.

BEAUTY FROM THE TOP DOWN. With its aggressive, wide body, Grand Sport would look right at home on the grid at Sebring. Fender vents have a signature side cove that includes the Grand Sport badge. The front grille is Z06-style painted in Satin Black. Shown with available Heritage Package that includes front-fender hash marks.

UNDER THE HOOD. Grand Sport is powered by a 6.2L LT1 naturally aspirated V8 with 460 horsepower and 465 lb.-ft. of torque. The engine includes a dry-sump oil system that pumps oil from a separate reservoir for better oil distribution in high-g situations.

DRESSED FOR THE TRACK. Grand Sport features fender flares, as well as special rockers and splitters.

SIGNIFICANT DOWNFORCE. A front splitter, special rockers and a rear spoiler with wickers are standard. The available Z07 Performance Package includes carbon ceramic brake rotors with Michelin® Pilot® Sport Cup 2 summer-only tires! Two different Carbon Fiber Ground Effects Packages are available, one with exposed carbon fiber and one with painted surfaces.

¹ Do not use summer-only tires in winter conditions, as it would adversely affect vehicle safety, performance and durability. Use only GM-approved tire and wheel combinations. Unapproved combinations may change the vehicle's performance characteristics. For important tire and wheel information, go to my.chevrolet.com/learnAbout/chevrolettires or see your dealer.

CORVETTE Z06 COUPE. Shown in Corvette Racing Yellow Tintcoat (extra-cost color) with available features.



WE LIVE FOR MOMENTS LIKE THESE.

Z06 IS THE FASTEST, MOST POWERFUL PRODUCTION CORVETTE EVER. WITH AVAILABLE Z07 PERFORMANCE PACKAGE AND 8-SPEED PADDLE-SHIFT AUTOMATIC TRANSMISSION¹, Z06 WILL SPRINT TO 60 MPH IN 2.95 SECONDS² AND RUN THE QUARTER-MILE IN 10.95 SECONDS.

650 HP. Z06 is powered by the 6.2L LT4 supercharged aluminum V8 delivering 650 horsepower and 650 lb.-ft. of torque. It uses a dry-sump oil system and titanium intake valves for reduced mass, along with sodium-filled exhaust valves for better heat dissipation. The LT4 supercharger displaces 1.7 liters and features a 4-lobe rotor design that promotes efficient performance. Available with both manual and automatic transmissions (manual transmission is recommended for extended track usage at higher ambient temperatures).

GREAT GOBS OF GRIP. Compared with Stingray, the front is 56 mm wider and the rear is 80 mm wider, creating a more aggressive stance and enhancing handling. Z06 comes with Michelin® Pilot® Super Sport ZP summer-only tires.³ A Z06 equipped with the available Z07 Performance Package can achieve 1.2 g on a skid pad.

AIR IS OUR ALLY. Two available aerodynamic packages generate incredible downforce for cornering grip and stability. Larger vents enhance cooling to the engine, brakes, transmission and differential.

¹ A manual transmission is recommended for extended track usage at higher ambient temperatures. Consult the Track Preparation Guide for additional information at my.chevrolet.com or see your dealer. ² Based on initial vehicle movement. ³ Do not use summer-only tires in winter conditions, as it would adversely affect vehicle safety, performance and durability. Use only GM-approved tire and wheel combinations. Unapproved combinations may change the vehicle's performance characteristics. For important tire and wheel information, go to my.chevrolet.com/learnAbout/chevrolettires or see your dealer.

HOW FAST TIMES HAPPEN.

TUNED AND TESTED AT NÜRBURGRING, THE Z07 PERFORMANCE PACKAGE IS AVAILABLE ON GRAND SPORT AND Z06. FOR BOTH MODELS, IT INCLUDES BREMBO CARBON CERAMIC BRAKES, SPECIAL MICHELIN TIRES AND AGGRESSIVE CHASSIS TUNING.

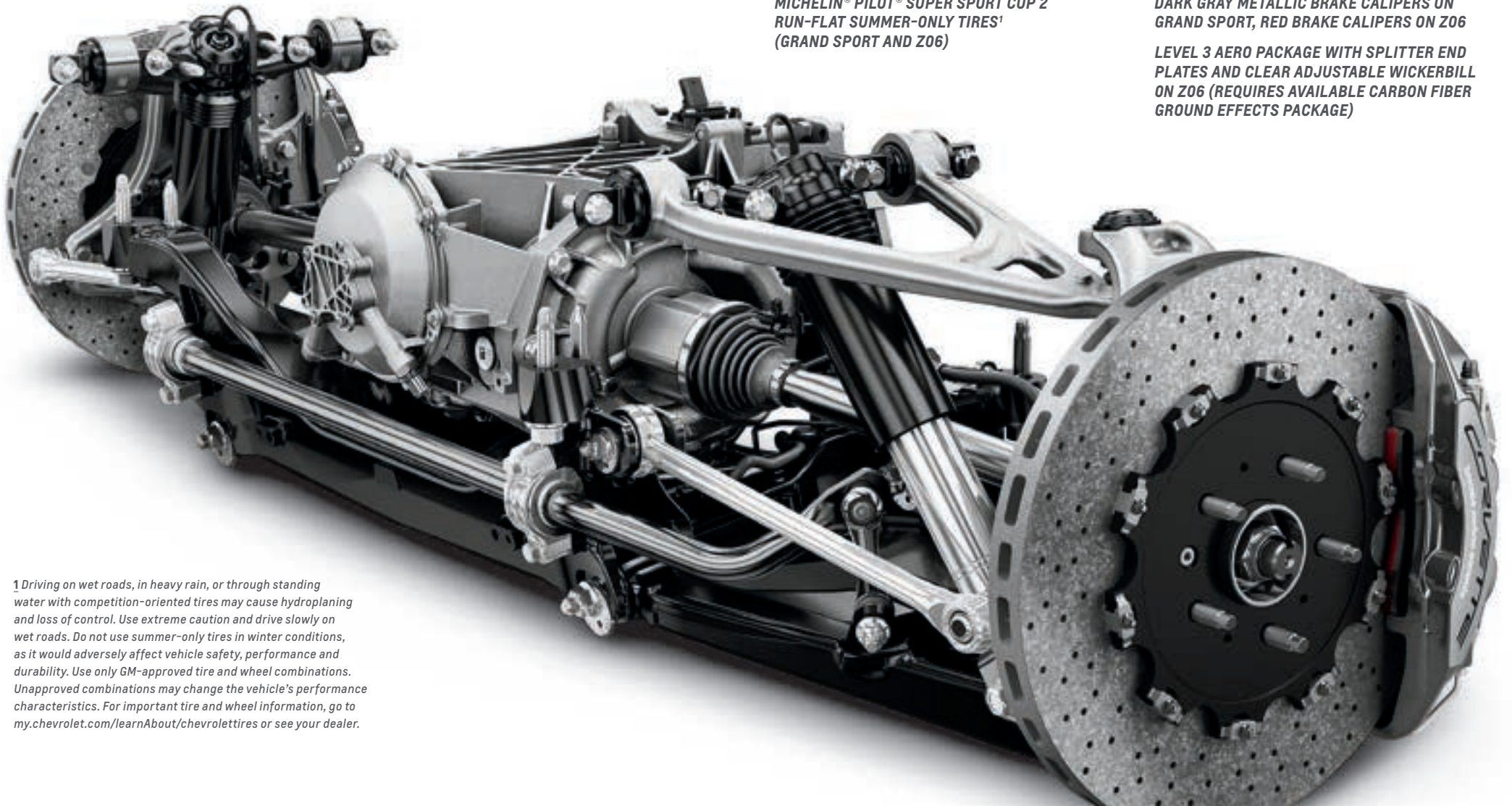
*BREMBO® CARBON CERAMIC BRAKES
(GRAND SPORT AND Z06)*

*FRONT P285/30ZR19 AND REAR 335/25ZR20
MICHELIN® PILOT® SUPER SPORT CUP 2
RUN-FLAT SUMMER-ONLY TIRES¹
(GRAND SPORT AND Z06)*


*Z07 SUSPENSION WITH MAGNETIC SELECTIVE
RIDE CONTROL (TUNED SPECIFICALLY FOR
GRAND SPORT AND Z06)*

*DARK GRAY METALLIC BRAKE CALIPERS ON
GRAND SPORT, RED BRAKE CALIPERS ON Z06*

*LEVEL 3 AERO PACKAGE WITH SPLITTER END
PLATES AND CLEAR ADJUSTABLE WICKERBILL
ON Z06 (REQUIRES AVAILABLE CARBON FIBER
GROUND EFFECTS PACKAGE)*



¹ Driving on wet roads, in heavy rain, or through standing water with competition-oriented tires may cause hydroplaning and loss of control. Use extreme caution and drive slowly on wet roads. Do not use summer-only tires in winter conditions, as it would adversely affect vehicle safety, performance and durability. Use only GM-approved tire and wheel combinations. Unapproved combinations may change the vehicle's performance characteristics. For important tire and wheel information, go to my.chevrolet.com/learnAbout/chevrolettires or see your dealer.



**STICK IT TO THE CORNERS.
THE Z07 PERFORMANCE
PACKAGE INCLUDES MICHELIN
PILOT SUPER SPORT CUP 2
RUN-FLAT SUMMER-ONLY
TIRES¹ FOR MAXIMUM ROAD-
HOLDING ABILITY ON A CLOSED
CIRCUIT OR RACE TRACK. THE
MICHELIN ENGINEER WHO
DEVELOPED THESE TIRES IS THE
SAME ONE WHO DEVELOPED
TIRES FOR THE CORVETTE
RACING FACTORY TEAM.**

¹ Driving on wet roads, in heavy rain, or through standing water with competition-oriented tires may cause hydroplaning and loss of control. Use extreme caution and drive slowly on wet roads. Do not use summer-only tires in winter conditions, as it would adversely affect vehicle safety, performance and durability. Use only GM-approved tire and wheel combinations. Unapproved combinations may change the vehicle's performance characteristics. For important tire and wheel information, go to my.chevrolet.com/learnAbout/chevrolettires or see your dealer.

“LADIES AND GENTLEMEN: CLEAR THE GRID.”

THEY SAY RACING IMPROVES THE BREED, BUT IN THE CASE OF CORVETTE Z06, THE LEARNING GOES BOTH WAYS. THE C7.R RACE CAR AND Z06 WERE CODEVELOPED AND SHARE A COMMON ULTRA-HIGH-STRENGTH, LIGHTWEIGHT ALUMINUM FRAME. IT IS A RARE THING INDEED FOR A RACE CAR AND A PRODUCTION CAR TO BE OF SUCH HIGH CALIBER THAT THEY BENEFIT EACH OTHER.

GREATNESS ENABLES GREATNESS. Corvette Racing sets the gold standard for technology transfer between the track and street. Corvette engineers are continually taking what they learn in competition and applying it to help improve the production Corvette – which then makes for better race cars. The Z06 is our best example of how racing technology improves the production Corvette.

CORVETTE RACING (C5-R TO C7.R) SINCE 1999:

8 CLASS WINS AT THE 24 HOURS OF LE MANS

11 CLASS WINS AT THE 12 HOURS OF SEBRING

2 CLASS WINS AND ONE OVERALL WIN AT THE ROLEX 24 AT DAYTONA

**11 AMERICAN LE MANS SERIES (ALMS)/
IMSA WEATHERTECH® SPORTSCAR
CHAMPIONSHIP MANUFACTURER TITLES**

10 ALMS/IMSA DRIVING TITLES

11 ALMS/IMSA TEAM TITLES

C7.R RACE CAR. Garcia, Magnussen, Rockenfeller take a third straight Corvette Racing win at Sebring in the No. 3 Corvette C7.R, beating out Ford, Porsche, BMW and Ferrari.

FOR CORVETTE RACING SCHEDULE AND RESULTS, PLEASE VISIT CORVETTERACING.COM.

The image shows the interior of a car, focusing on the front seats. The seats are upholstered in black leather with prominent red stitching along the edges and seams. The driver's seat is on the left, and the passenger seat is on the right. The center console is visible between the seats. The overall lighting is dark, highlighting the textures of the leather and the contrast of the red stitching. The text is overlaid on the left side of the image.

**“THE COCKPIT IS MORE DRIVER-CENTRIC THAN EVER, WITH A SHARPLY
CANTED CENTER STACK AND WRAPAROUND DOOR PANELS THAT CREATE
A JETFIGHTER-LIKE VIBE.”**

— EDMUNDS.COM

CORVETTE STINGRAY CONVERTIBLE 3LT. Shown in Kalahari with sueded microfiber-wrapped steering wheel and shifter as well as other available features.

FINELY TAILORED IS ONLY THE BEGINNING.

THE PRECISION STARTS HERE. Leather-appointed seating surfaces are standard on all Corvette models. Napa leather, available on the 3LT and 3LZ trim levels, is a particular testament to the finely crafted Corvette interior. A hand-stretched, leather-wrapped instrument panel swathed and sewn to meticulous fit and finish is included on 3LT and 3LZ, and lightweight aluminum accents adorn doors, pedals, shifter and cockpit instrumentation.

COMFORT YOUR PASSENGER. The passenger air vent includes an interior temperature control and indicator, plus controls for the available heated and ventilated seats. In every detail, this interior is designed for total comfort.

GRAB THE RACING-STYLE WHEEL. Included on all Corvette models, the flat-bottom steering wheel provides more knee room for entry/egress and heel/toe shifting. This leather-wrapped power tilt and telescopic steering wheel also includes controls for Bluetooth® wireless technology,¹ cruise control, the audio system and the Driver Information Center.

¹ Visit my.chevrolet.com/learn for vehicle and smartphone compatibility.



A MORE ACCURATE WAY TO KEEP THE REVS UP.

HEAD-UP DISPLAY. An available multi-color Head-Up Display projects critical data as well as radio station selections and more right onto the windshield.

CUSTOMIZABLE GAUGE CLUSTER.

With standard Driver Mode Control, you have the option of choosing information appropriate for the driving situation via a console switch.

COLOR TOUCH-SCREEN. The retractable, tablet-inspired color touch-screen provides vehicle settings as well as media and radio station entertainment options. There is also a hidden storage area for small items behind the screen.

Wi-Fi ON THE FLY. Chevrolet offers OnStar® 4G LTE plus an available built-in Wi-Fi® hotspot,¹ providing a fast and reliable connection with bandwidth for up to seven devices, offering a better in-vehicle experience than your smartphone.

CHEVROLET MYLINK² Using steering wheel-mounted controls, hand gesture recognition and voice recognition capabilities, you can take calls and receive text messages hands-free. Or access functions including available OnStar³ and SiriusXM Satellite Radio.⁴ Plus, stream music services.⁵ Other features include available 3-D navigation maps, three USB ports,⁶ an auxiliary input jack and Bluetooth® wireless technology.⁷

Apple CarPlay™ COMPATIBILITY.⁸ Take some of your most used compatible iPhone® features and put them on your vehicle's touch-screen display in a smart, simple manner. Access your Phone, Music, Maps and Messages, as well as some of your other favorite apps.

ANDROID AUTO COMPATIBILITY.⁹ You can quickly and intuitively interact with select smartphone apps with support for Android Auto™. This system takes some of your compatible Android phone's features and puts them on the Chevrolet MyLink² display in a smart, simple manner. You can access your phone, text messages, music, navigation and more.

¹ Requires a compatible mobile device, active OnStar service and data plan. 4G LTE service available in select markets. Visit onstar.com for coverage map, details and system limitations. Data plans provided by AT&T. ² Full functionality requires compatible Bluetooth and smartphone, and USB connectivity for some devices. ³ Visit onstar.com for coverage map, details and system limitations. Services vary by model and conditions. ⁴ SiriusXM subscription is free for three months with 1LT and 1LZ and free for one year with 2LT, 2LZ, 3LT and 3LZ. If you decide to continue service after your trial, the subscription plan you choose will automatically renew thereafter and you will be charged according to your chosen payment method at then-current rates. Fees and taxes apply. To cancel you must call SiriusXM at 1-866-635-2349. See SiriusXM Customer Agreement for complete terms at siriusxm.com. All fees and programming subject to change. ⁵ Data plan rates apply. ⁶ Not compatible with all devices. ⁷ Visit my.chevrolet.com/learn for vehicle and smartphone compatibility. ⁸ Vehicle user interface is a product of Apple and its terms and privacy statements apply. Requires compatible iPhone and data plan rates apply. ⁹ Vehicle user interface is a product of Google and its terms and privacy statements apply. Requires the Android Auto app on Google Play and an Android compatible smartphone running Android 5.0 Lollipop or higher and data plan rates apply.

Apple CarPlay is a trademark of Apple Inc. iPhone is a trademark of Apple Inc., registered in the U.S. and other countries. Android, Android Auto, Google, Google Play and other marks are trademarks of Google Inc.

CONVETTE STINGRAY CONVERTIBLE 3LT. Shown in Jet Black with sueded microfleece inserts and available Blue Custom Stitching as well as other available features.

GPS Tracking Map



73
MPH



Lap Time

02:21.57



RPM / 1000



Steering Angle

Distance: 1.2 mi

Drive Mode: Track

RECORD YOUR GREATEST MOMENTS BEHIND THE WHEEL.

PERFORMANCE DATA RECORDER.

The available Performance Data Recorder is a tool that can help make you a better driver, and it also helps you get the most out of your Corvette. Originally developed by racing engineers, this system lets you record, share and understand your driving experiences on and off the track. Add an extra dimension to the Corvette experience by logging video of your drives, along with real-time performance data, onto an SD memory card stored in the glove box. Four modes allow you to capture video, audio (except in Valet Mode), driving stats, date and time, and much more.

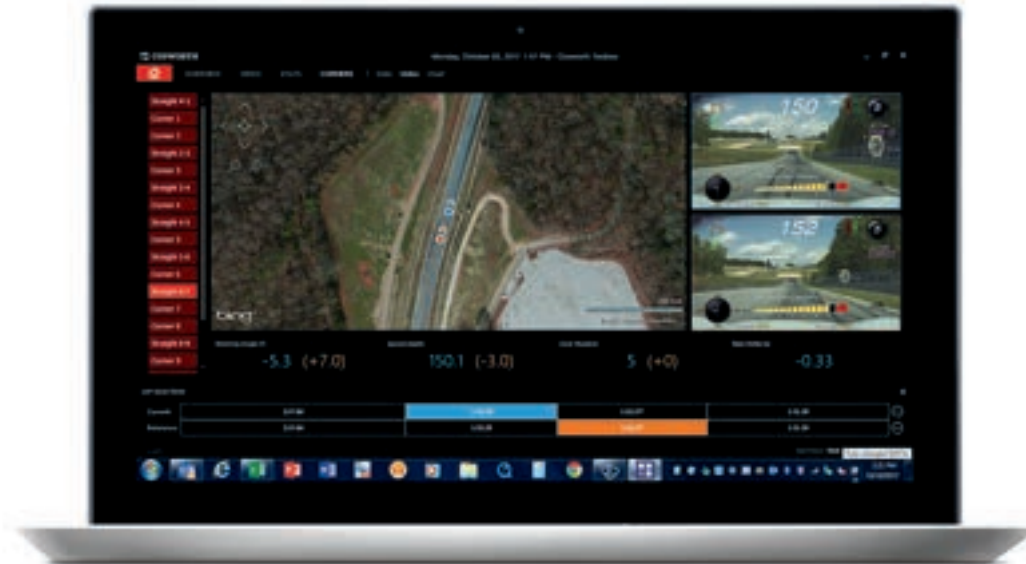
FOUR SELECTABLE OVERLAY MODES.

Track Mode overlays the maximum level of data onto your drive video, including speed, rpm, throttle and braking, g force, location-based track map, lap times and more. Sport Mode shows fewer details, but includes key data such as speed and g force. Performance Mode records 0-to-60 mph acceleration, quarter-mile speed and elapsed time, as well as 0-to-100-to-0 mph runs. For everyday driving and scenic road trips, Touring Mode has no data overlay.

TOOLBOX. Analyze your driving technique using Cosworth Toolbox software that can be downloaded from the Corvette website. Developed by the same motorsports engineering company that supplies the Corvette Racing data acquisition and telemetry system, Cosworth Toolbox software acts like a virtual driving coach. It lets you comb through performance and lap metrics such as individual wheel speed, suspension displacement, yaw and ambient/intake air temperature. You can even pull in a hot lap from another driver and compare it side by side with yours.

ANALYZE YOUR DRIVE. Data is captured using a seamlessly integrated, windshield-mounted HD camera module, as well as a performance processor, internal accelerometers and a GPS system. Play your video back on a computer or tablet, or relive your drive right inside your Corvette (when parked, of course) on the 8-inch diagonal touch-screen.

VALET MODE. Keep tabs on your Corvette when you're not the driver by setting the PDR to Valet Mode, which can record exterior forward video and data.





AMPLIFY YOUR CORVETTE EXPERIENCE.

THE REWARDS OF A HIGHER EDUCATION.

Learn all the capabilities of your new Corvette through the Ron Fellows Performance Driving School. This two-day program is available to 2018 Corvette owners at a reduced rate. Developed and managed by legendary Corvette racer Ron Fellows, the performance driving curriculum at Spring Mountain Motor Resort and Country Club in Pahrump, Nevada, accommodates drivers of all skill levels. Through the Ron Fellows Performance Driving

School, you'll be able to make the most of Corvette technologies such as the available Driver Mode Selector and Active Rev Matching and delve deeper into the vehicle's capabilities, resulting in a richer driving experience. Owners do not use their own Corvette on track; the school has its own fleet of Stingray, Grand Sport and Z06 models to choose from. Visit corvetteownersschool.com for more information.

TAKE MUSEUM DELIVERY. You can opt for Museum Delivery, which personalizes the buying experience with an opportunity to pick up your new Corvette right at the National Corvette Museum (corvettemuseum.com), located near the Bowling Green, Kentucky, assembly plant. Includes personalized interior plaque (shown at right).

GET A PERSONALIZED INTERIOR PLAQUE. Make your 2018 Corvette one of a kind with the available Personalized Interior Plaque that features your name, your VIN and the Corvette crossed-flags logo.



ACCESSORIES



C7.R Vehicle Dust Cover.



Embroidered Console Armrest with Stingray Logo.



Grand Sport Interior Doorsill Plates.



Interior Trim Badge with Jake Logo.



Grand Sport Underhood Liner.

MAKE IT YOURS. There is a wide range of accessories available to personalize your Corvette. Visit chevrolet.com/accessories for more choices.



CORVETTE

Drive Safely
9FVB702

Z06-Style Spoiler with Clear Wickerbill.

PERFORMANCE



	STINGRAY	GRAND SPORT	Z06
ENGINE	6.2L LT1V8	6.2L LT1V8	6.2L LT4 supercharged V8
TYPE	90-degree V8, aluminum; Variable Valve Timing	90-degree V8, aluminum; Variable Valve Timing	90-degree V8, aluminum; Variable Valve Timing
COMPRESSION RATIO	11.5:1	11.5:1	10.0:1
HORSEPOWER	455 @ 6000 rpm (460 @ 6000 rpm with available performance exhaust or Z51 Performance Package)	460 @ 6000 rpm	650 @ 6400 rpm
TORQUE	460 lb.-ft. @ 4600 rpm (465 lb.-ft. @ 4600 rpm with available performance exhaust or Z51 Performance Package)	465 lb.-ft. @ 4600 rpm	650 lb.-ft. @ 3600 rpm
REDLINE	6600 rpm	6600 rpm	6600 rpm
0 TO 60¹	3.7 seconds with available 8-speed paddle-shift automatic and Z51 Performance Package	3.6 seconds with available 8-speed paddle-shift automatic and Z07 Performance Package	2.95 seconds with available 8-speed paddle-shift automatic and Z07 Performance Package
QUARTER MILE	11.9 seconds with available 8-speed paddle-shift automatic and Z51 Performance Package	11.8 seconds with available 8-speed paddle-shift automatic and Z07 Performance Package	10.95 seconds with available 8-speed paddle-shift automatic and Z07 Performance Package
SKID PAD (MAX LATERAL ACCELERATION)	1.03 g with available Z51 Performance Package	1.2 g with available Z07 Performance Package	1.2 g with available Z07 Performance Package
BRAKING SYSTEM	Brembo® 4-wheel ventilated disc brakes with ABS; 4-piston calipers (larger slotted front rotors with available Z51 Performance Package)	Brembo aluminum 6-piston monobloc fixed front calipers with steel rotors; aluminum 4-piston rear calipers with steel rotors (carbon ceramic high-performance brake system available)	Brembo aluminum 6-piston monobloc fixed front calipers with steel rotors; aluminum 4-piston rear calipers with steel rotors (carbon ceramic high-performance brake system available)
ROTOR DIAMETER	12.6-in. ventilated front 13.3-in. ventilated rear (13.6-in. slotted front and 13.3-in. slotted rear with available Z51 Performance Package)	14.6-in. slotted front 14.4-in. slotted rear (15.5-in. cross-drilled front and 15.3-in. cross-drilled rear carbon ceramic rotors available)	14.6-in. slotted front 14.4-in. slotted rear (15.5-in. cross-drilled front and 15.3-in. cross-drilled rear carbon ceramic rotors available)
CURB WEIGHT	3,298 lbs. (coupe) 3,362 lbs. (convertible)	3,428 lbs. (coupe) 3,487 lbs. (convertible)	3,524 lbs. (coupe) 3,582 lbs. (convertible)
WEIGHT DISTRIBUTION (F/R)	49/51	49/51	50/50

¹ Based on initial vehicle movement. ² Do not use summer-only tires in winter conditions, as it would adversely affect vehicle safety, performance and durability. Use only GM-approved tire and wheel combinations. Unapproved combinations may change the vehicle's performance characteristics. For important tire and wheel information, go to my.chevrolet.com/learnAbout/chevrolettires or see your dealer.

PERFORMANCE (CONTINUED)

	STINGRAY	GRAND SPORT	Z06
MICHELIN® PILOT® SUPER SPORT ZP SUMMER-ONLY TIRES²	245/35ZR19 front 285/30ZR20 rear	285/30ZR19 front 335/25ZR20 rear	285/30ZR19 front 335/25ZR20 rear
STABILIZER BAR DIAMETER	26.7 mm (28 mm with available Z51 Performance Package)	30.7 mm	30.7 mm
SHOCK PISTON DIAMETER	35 mm (45 mm front and 46 mm rear with available Z51 Performance Package)	46 mm	46 mm

SPECIFICATIONS

	STINGRAY	GRAND SPORT	Z06			
WHEELBASE	106.7 in./2710 mm	106.7 in./2710 mm	106.7 in./2710 mm			
OVERALL LENGTH	176.9 in./4493 mm	177.9 in./4519 mm	177.9 in./4519 mm			
OVERALL WIDTH	73.9 in./1877 mm	77.4 in./1966 mm	77.4 in./1966 mm			
TRACK	63.0 in./1600 mm front 61.7 in./1567 mm rear	63.50 in./1613 mm front 62.50 in./1588 mm rear	63.50 in./1613 mm front 62.50 in./1588 mm rear			
HEIGHT	48.8 in./1240 mm coupe 48.9 in./1242 mm convertible	48.6 in./1234 mm coupe 48.7 in./1237 mm convertible	48.6 in./1234 mm coupe 48.7 in./1237 mm convertible			
STEERING WHEEL DIAMETER	14.2 in./360 mm	14.2 in./360 mm	14.2 in./360 mm			
TURNING CIRCLE: CURB TO CURB	37.7 ft./11.5 m	37.7 ft./11.5 m	37.7 ft./11.5 m			
STEERING ROTATION: LOCK TO LOCK	2.57 turns	2.57 turns	2.57 turns			
	STINGRAY		STINGRAY Z51 OR GRAND SPORT		Z06	
TRANSMISSION RATIOS (:1)	MANUAL	PADDLE-SHIFT AUTO	MANUAL	PADDLE-SHIFT AUTO	MANUAL	PADDLE-SHIFT AUTO
1	2.664	4.56	2.966	4.56	2.289	4.56
2	1.783	2.97	2.066	2.97	1.611	2.97
3	1.302	2.08	1.426	2.08	1.208	2.08
4	1	1.69	1	1.69	1	1.69
5	0.741	1.27	0.709	1.27	0.813	1.27
6	0.503	1	0.567	1	0.672	1
7	0.424	0.85	0.478	0.85	0.454	0.85
8	–	0.65	–	0.65	–	0.65
AXLE	3.42	2.41	3.42	2.73	3.42	2.41

ENGINES



6.2L LT1 V8 (STANDARD ON STINGRAY AND GRAND SPORT)



6.2L LT4 SUPERCHARGED V8 (STANDARD ON Z06)

HORSEPOWER	455 @ 6000 rpm (Stingray) 460 @ 6000 rpm (Stingray with available performance exhaust and Grand Sport)	650 @ 6400 rpm
TORQUE	460 lb.-ft. @ 4600 rpm (Stingray) 465 lb.-ft. @ 4600 rpm (Stingray with available performance exhaust and Grand Sport)	650 lb.-ft. @ 3600 rpm
BORE AND STROKE	103.25 mm x 92 mm	103.25 mm x 92 mm
FIRING ORDER	1-8-7-2-6-5-4-3	1-8-7-2-6-5-4-3
FUEL SYSTEM	Direct Injection	Direct Injection
FUEL	Premium recommended	Premium required
BLOCK	Cast aluminum	Cast aluminum
CYLINDER HEAD	Cast aluminum	Cast aluminum
INTAKE VALVES	Hollow	Titanium
EXHAUST VALVES	Hollow sodium-filled	Hollow sodium-filled
INTAKE MANIFOLD	Composite	Cast aluminum supercharger
EXHAUST MANIFOLD	Cast nodular iron	Cast stainless steel
MAIN BEARING CAPS	Cast nodular iron	Cast nodular iron
CRANKSHAFT	Forged steel	Forged steel
CAMSHAFT	Billet steel	Billet steel
CONNECTING RODS	Forged powder metal	Forged powder metal
ADDITIONAL ENGINE FEATURES	Active Fuel Management Variable Valve Timing (VVT) Electronic Throttle Control Oil-life monitoring system Dry-sump oil system (Stingray Z51 and Grand Sport)	Active Fuel Management Variable Valve Timing (VVT) Electronic Throttle Control Oil-life monitoring system Dry-sump oil system Eaton® supercharger with dual-brick air-to-liquid intercooler

STANDARD AND AVAILABLE FEATURES

ENGINE/CHASSIS	STINGRAY			GRAND SPORT			Z06		
	1LT	2LT	3LT	1LT	2LT	3LT	1LZ	2LZ	3LZ
Engine:									
6.2L LT1 V8 with Direct Injection, Variable Valve Timing and Active Fuel Management	●	●	●	●	●	●	–	–	–
6.2L LT4 supercharged V8 with Direct Injection, Variable Valve Timing and Active Fuel Management	–	–	–	–	–	–	●	●	●
Dry-sump oil system	○ ¹	○ ¹	○ ¹	●	●	●	●	●	●
Oil-life monitoring system and engine oil cooler	●	●	●	●	●	●	●	●	●
Transmission:									
7-speed manual with Active Rev Matching and launch control	●	●	●	●	●	●	●	●	●
8-speed paddle-shift with automatic mode and remote vehicle starter system	○	○	○	○	○	○	○	○	○
Driver Mode Selector with 5 modes	●	●	●	●	●	●	●	●	●
Electronic Limited-Slip Differential (eLSD) with rear differential cooler	○ ¹	○ ¹	○ ¹	●	●	●	●	●	●
Exhaust:									
Aluminized stainless steel with 3" polished stainless steel tips	●	●	●	–	–	–	–	–	–
Performance with 4" polished stainless steel tips and aggressive exhaust sound	○	○	○	●	●	●	●	●	●
Suspension:									
4-wheel independent	●	●	●	●	●	●	●	●	●
Magnetic Selective Ride Control and Performance Traction Management	○ ¹	○ ¹	○ ¹	●	●	●	●	●	●
Magnetic Selective Ride Control	○	○	○	–	–	–	–	–	–
Brakes:									
4-wheel ventilated disc with ABS and Panic Brake Assist	●	●	●	●	●	●	●	●	●
Carbon ceramic high-performance brake system	–	–	–	○	○	○	○	○	○
Painted brake calipers:									
Dark Gray Metallic	●	●	●	○ ²	○ ²	○ ²	○ ²	○ ²	○ ²
Black	○ ¹	○ ¹	○ ¹	●	●	●	○ ³	○ ³	○ ³
Red	○	○	○	○	○	○	●	●	●
Yellow	○	○	○	○	○	○	○	○	○
Blue	–	–	–	–	–	○ ⁴	–	–	○ ⁴
Speed-sensitive Electric Power Steering (EPS) with variable ratio	●	●	●	●	●	●	●	●	●
Aluminum frame structure	●	●	●	●	●	●	●	●	●

● STANDARD ○ AVAILABLE – NOT AVAILABLE

EXTERIOR	STINGRAY			GRAND SPORT			Z06		
	1LT	2LT	3LT	1LT	2LT	3LT	1LZ	2LZ	3LZ
Engine hood:									
Carbon-fiber with rear opening for engine access	●	●	●	●	●	●	●	●	●
With low-profile design	●	●	●	●	●	●	–	–	–
With high-profile design	–	–	–	–	–	–	●	●	●
Exposed carbon-fiber insert	○ ⁵	○ ⁵	○ ⁵	○ ⁶	○ ⁶	○ ⁶	○ ⁵	○ ⁵	○ ⁵
Grille:									
Z06-style with Satin Black accent	–	–	–	●	●	●	–	–	–
Z06-style with Carbon Flash accent	–	–	–	–	–	–	●	●	●
Xenon high-intensity discharge headlamps and LED daytime running lamps									
	●	●	●	●	●	●	●	●	●
Exterior vents:									
Painted in Carbon Flash	●	●	●	●	●	●	●	●	●
Painted in body color	○ ⁷	○ ⁷	○ ⁷	○ ⁷	○ ⁷	○ ⁷	○ ⁷	○ ⁷	○ ⁷
Painted in Shark Gray	○ ⁸	○ ⁸	○ ⁸	○ ⁸	○ ⁸	○ ⁸	○ ⁸	○ ⁸	○ ⁸
Mirrors:									
Outside heated power-adjustable body-color	●	–	–	●	–	–	●	–	–
Outside heated power-adjustable body-color with driver-side auto-dimming feature	–	●	●	–	●	●	–	●	●
Carbon Flash-painted mirrors and spoiler	○ ⁷	○ ⁷	○ ⁷	–	–	–	–	–	–
Carbon Flash-painted mirrors	–	–	–	○ ⁷	○ ⁷	○ ⁷	○ ⁷	○ ⁷	○ ⁷
Convertible:									
Full power top with remote activation, includes glass rear window with integral defroster	●	●	●	●	●	●	●	●	●
Carbon-fiber tonneau cover inserts	○	○	○	○	○	○	○	○	○
Capless fueling									
	●	●	●	●	●	●	●	●	●
Rocker extensions and wider fenders and rear fascia									
	–	–	–	●	●	●	●	●	●
Rear fender air ducts:									
Low-profile design	●	●	●	–	–	–	–	–	–
High-profile design in body color	–	–	–	●	●	●	–	–	–
High-profile design in Carbon Flash	–	–	–	–	–	–	●	●	●
COUPE REMOVABLE ROOF PANEL OPTIONS									
One-piece body-color carbon-fiber roof panel	●	●	●	●	●	●	●	●	●
One-piece transparent roof panel	○	○	○	○	○	○	○	○	○
One-piece visible carbon-fiber roof panel with body-color surround	–	○	○	–	○	○	○	○	○
Body-Color Dual Roof Package: Body-color roof panel and transparent roof panel	–	○	○	–	○	○	–	○	○
Carbon-Fiber Dual Roof Package: Visible carbon-fiber roof panel with body-color surround and transparent roof panel	–	○	○	–	○	○	–	○	○
GRAPHICS									
Hood Stinger Stripe Package ⁹	○	○	○	○	○	○	○	○	○
Full-Length Dual Racing Stripe Package ⁹	○	○	○	○	○	○	○	○	○
Full-Length Racing Stripe Package ⁹	○	○	○	○	○	○	○	○	○
Grand Sport Center Stripe Package	–	–	–	○ ¹⁰	○ ¹⁰	○ ¹⁰	–	–	–
Grand Sport Heritage Package Fender Hash Marks	–	–	–	○ ¹⁰	○ ¹⁰	○ ¹⁰	–	–	–

¹ Requires available Z51 Performance Package. ² Requires available Z07 Performance Package or carbon ceramic high-performance brake system. ³ Not available with Z07 Performance Package or carbon ceramic high-performance brake system. ⁴ Requires available Carbon 65 Edition. ⁵ Not available with any stripe or decal package. ⁶ Not available with any hood or center stripe package. ⁷ Not available with Black exterior color. ⁸ Not available with Watkins Glen Gray Metallic exterior color. ⁹ Not available with any other stripe package. ¹⁰ Requires available Grand Sport Heritage Package.

STANDARD AND AVAILABLE FEATURES (CONTINUED)

WHEELS ¹	STINGRAY			GRAND SPORT			Z06		
	1LT	2LT	3LT	1LT	2LT	3LT	1LZ	2LZ	3LZ
19" x 8.5" front and 20" x 10" rear									
Z51-style 5-split-spoke aluminum in Silver	●	●	●	–	–	–	–	–	–
Z51-style 5-split-spoke aluminum in Black	○	○	○	–	–	–	–	–	–
Z51-style 5-split-spoke machined-aluminum in Black	○	○	○	–	–	–	–	–	–
Z51-style 5-split-spoke aluminum in chrome	○	○	○	–	–	–	–	–	–
Z51-style 5-split-spoke aluminum in Satin Black with Red stripe	○	○	○	–	–	–	–	–	–
Z51-style 5-split-spoke aluminum in Black with Yellow stripe	○	○	○	–	–	–	–	–	–
Motorsports polished-aluminum	○	○	○	–	–	–	–	–	–
Motorsports aluminum in Black	○	○	○	–	–	–	–	–	–
Aluminum torque directional in Silver	○	○	○	–	–	–	–	–	–
Aluminum torque directional in chrome	○	○	○	–	–	–	–	–	–
19" x 10" front and 20" x 12" rear									
Grand Sport aluminum in Pearl Nickel	–	–	–	●	●	●	–	–	–
Grand Sport aluminum in Black	–	–	–	○	○	○	–	–	–
Grand Sport machined-face aluminum	–	–	–	○	○	○	–	–	–
Grand Sport aluminum in chrome	–	–	–	○	○	○	–	–	–
Grand Sport aluminum in Satin Black with Red stripe	–	–	–	○	○	○	–	–	–
Grand Sport machined-groove aluminum in Black	–	–	–	–	–	○ ²	–	–	–
19" x 10" front and 20" x 12" rear									
Z06 aluminum in Pearl Nickel	–	–	–	–	–	–	●	●	●
Z06 aluminum in Black	–	–	–	–	–	–	○	○	○
Z06 machined-groove aluminum in Spectra Gray	–	–	–	–	–	–	○	○	○
Z06 aluminum in chrome	–	–	–	–	–	–	○	○	○
Z06 aluminum in Satin Black with Red stripe	–	–	–	–	–	–	○	○	○
Z06 aluminum in Black with Yellow stripe	–	–	–	–	–	–	○	○	○
Z06 10-spoke blade aluminum in Pearl Nickel	–	–	–	–	–	–	○	○	○
Z06 10-spoke blade machined-groove aluminum in Black	–	–	–	–	–	–	–	–	○ ²

SAFETY & SECURITY

Active Handling System with all-speed Traction Control	●	●	●	●	●	●	●	●	●
Frontal and side-impact air bags ³ for driver and passenger with Passenger Sensing System	●	●	●	●	●	●	●	●	●
Front curb view parking cameras	–	●	●	–	●	●	–	●	●
OnStar Guidance Plan ⁴ with limited service trial, including Automatic Crash Response, Stolen Vehicle Assistance, Roadside Assistance, Turn-by-Turn Navigation, Advanced Diagnostics and more (trial excludes Hands-Free Calling Minutes)	●	●	●	●	●	●	●	●	●
Power-programmable door locks with lockout protection	●	●	●	●	●	●	●	●	●
Keyless Open and Start	●	●	●	●	●	●	●	●	●
Rear vision camera with wide view	●	●	●	●	●	●	●	●	●
Theft-deterrent system:									
Vehicle immobilizer and audible/visual alarm	●	●	●	●	●	●	●	●	●
Content theft alarm for security content and unauthorized entry	–	●	●	–	●	●	–	●	●
Run-flat summer-only performance tires ⁵	●	●	●	●	●	●	●	●	●
Tire Pressure Monitoring System	●	●	●	●	●	●	●	●	●

● STANDARD ○ AVAILABLE – NOT AVAILABLE

INTERIOR	STINGRAY			GRAND SPORT			Z06		
	1LT	2LT	3LT	1LT	2LT	3LT	1LZ	2LZ	3LZ
Dual-zone automatic climate control with individual settings for driver and passenger, dedicated passenger controls and outside temperature display	●	●	●	●	●	●	●	●	●
Air filtration system with pollen filter	●	●	●	●	●	●	●	●	●
Color Head-Up Display with readouts for 4 modes, including Track mode with g-meter, vehicle speed and engine rpm	–	●	●	–	●	●	●	●	●
Driver Information Center with reconfigurable 8-inch diagonal color display; includes trip/fuel information, vehicle information, vehicle settings and driver mode settings for Tour, Sport and Track modes	●	●	●	●	●	●	●	●	●
Instrument panel trim: Carbon-fiber	–	○	○	–	○	○	–	○	○
High-gloss carbon-fiber	–	–	○ ⁶	–	–	○ ⁶	–	–	○ ⁶
3-spoke flat-bottom steering wheel: Leather-wrapped	●	●	●	●	●	●	●	●	●
Sueded microfiber-wrapped	○ ⁶	○ ⁷	○ ⁷	○ ⁶	○ ⁷	○ ⁷	○ ⁶	○ ⁷	○ ⁷
Sueded microfiber-wrapped, carbon-fiber rim	–	–	○ ⁶	–	–	○ ⁶	–	–	○ ⁶
Leather-wrapped shift knob	●	●	●	●	●	●	●	●	●
Power tilt and telescopic steering column	●	●	●	●	●	●	●	●	●
Electronic cruise control with Set and Resume Speed	●	●	●	●	●	●	●	●	●
Floor console with two covered cup holders, two auxiliary power outlets, two USB ports ⁸ , auxiliary input jack and storage	●	●	●	●	●	●	●	●	●
Console-mounted passenger assist handle	●	●	●	●	●	●	●	●	●
Storage: Electric locking glove box, motorized hidden storage behind 8-inch diagonal touch-screen (includes USB port ⁸), center console and rear compartment with cover	●	●	●	●	●	●	●	●	●
Lighting: Courtesy, cargo and glove box	●	●	●	●	●	●	●	●	●
Auto-dimming frameless rearview mirror	–	●	●	–	●	●	–	●	●
Illuminated visor vanity mirrors for driver and passenger	●	●	●	●	●	●	●	●	●
Universal Home Remote with 3-channel programmable transmitter for garage door opener, located on driver visor	–	●	●	–	●	●	–	●	●
Premium carpeted floor mats	●	●	●	●	●	●	●	●	●
Power windows with express-up/-down feature	●	●	●	●	●	●	●	●	●
Push-button hatch/trunk release with cinching latch	●	●	●	●	●	●	●	●	●
Cargo luggage shade (coupe)	–	●	●	–	●	●	–	●	●
Cargo net	–	●	●	–	●	●	–	●	●
Corvette Museum Delivery: Includes Corvette Museum logo plaque personalized with your name (acknowledgment form required)	○	○	○	○	○	○	○	○	○
Customer-selectable VIN ending ⁹	○	○	○	○	○	○	○	○	○
Custom-made interior plaque personalized with your name and VIN	○	○	○	○	○	○	○	○	○

¹ These wheels are paired with summer-only tires. Do not use summer-only tires in winter conditions, as it would adversely affect vehicle safety, performance and durability. Use only GM-approved tire and wheel combinations. Unapproved combinations may change the vehicle's performance characteristics. For important tire and wheel information, go to my.chevrolet.com/learnAbout/chevrolettires or see your dealer. ² Requires available Carbon 65 Edition. ³ A NOTE ON CHILD SAFETY: Always use safety belts and the correct child restraint for your child's age and size, even with air bags. Even in vehicles equipped with the Passenger Sensing System, children are safer when properly secured in a rear seat in the appropriate infant, child or booster seat. Never place a rear-facing infant restraint in the front seat of any vehicle equipped with an active frontal air bag. See the Owner's Manual and the child safety seat instructions for more safety information. ⁴ Visit onstar.com for coverage map, details and system limitations. OnStar acts as a link to existing emergency service providers. ⁵ Do not use summer-only tires in winter conditions, as it would adversely affect vehicle safety, performance and durability. Use only GM-approved tire and wheel combinations. Unapproved combinations may change the vehicle's performance characteristics. For important tire and wheel information, go to my.chevrolet.com/learnAbout/chevrolettires or see your dealer. ⁶ Requires Jet Black leather seating surfaces with sueded microfiber inserts. ⁷ Requires leather seating surfaces with sueded microfiber inserts. ⁸ Not compatible with all devices. ⁹ Not available on all VINs. Subject to restrictions and approval. Available on sold orders only.

STANDARD AND AVAILABLE FEATURES (CONTINUED)

● STANDARD ○ AVAILABLE – NOT AVAILABLE

SEATING	STINGRAY			GRAND SPORT			Z06		
	1LT	2LT	3LT	1LT	2LT	3LT	1LZ	2LZ	3LZ
Interior trim and seats only in interior color	●	–	–	●	–	–	●	–	–
Interior trim, seats, console, door armrests and instrument panel brow in interior color	–	●	–	–	●	–	–	●	–
Interior trim, seats, console, door armrests and instrument panel in interior color	–	–	●	–	–	●	–	–	●
Custom Leather-Wrapped Interior Package includes leather-wrapped instrument panel, upper door trim panels and console storage cover	–	–	●	–	–	●	–	–	●
Sueded Microfiber-Wrapped Upper Interior Trim Package includes sueded microfiber headliner, visors, trim above windshield and rear window, A-pillar trim, and area around quarter windows (coupe); sueded microfiber visors, trim above windshield and A-pillar trim (convertible)	–	–	●	–	–	●	–	–	●
GT bucket seats:									
Mulan leather seating surfaces	●	●	–	●	●	–	●	●	–
Napa leather seating surfaces	–	–	●	–	–	●	–	–	●
Leather seating surfaces and sueded microfiber inserts ¹	–	○	○	–	○	○	–	○	○
Competition Sport bucket seats:									
Leather seating surfaces and sueded microfiber inserts ¹	○	○	○	○	○	○	○	○	○
Mulan leather seating surfaces	–	○	○	–	○	○	–	○	○
Two-tone seats	–	○ ²	○ ²	–	○ ²	○ ²	–	○ ²	○ ²
Red safety belts	○	○	○	○	○	○	○	○	○
Custom stitching on seats, instrument panel, doors, console, shifter and boot:									
Yellow (includes Yellow shift paddles)	–	–	○ ³	–	–	○ ³	–	–	○ ³
Red (includes Red shift paddles)	–	–	○ ³	–	–	○ ³	–	–	○ ³
Blue	–	–	○ ³	–	–	○ ³	–	–	○ ³
8-way power seat adjusters	●	●	●	●	●	●	●	●	●
Power bolster and power lumbar adjusters	–	●	●	–	●	●	–	●	●
Heated and vented seats	–	●	●	–	●	●	–	●	●
Memory Package: Recalls two driver settings for 8-way power seat, outside mirrors and tilt/telescoping steering column	–	●	●	–	●	●	–	●	●

ENTERTAINMENT	STINGRAY			GRAND SPORT			Z06		
	1LT	2LT	3LT	1LT	2LT	3LT	1LZ	2LZ	3LZ
Chevrolet MyLink Radio ⁴ with 8-inch diagonal color touch-screen display with motorized power up/down and hidden storage with USB ports ⁵ ; AM/FM/HD Radio ⁶ ; Siri Eyes Free ⁷ ; Text Message Alerts ⁷ ; voice-activated technology, and Android Auto ^{TM8} and Apple CarPlay ^{TM9} compatibility; also includes the ability to browse, select and install apps on the MyLink system with Shop ¹⁰	●	●	–	●	●	–	●	●	–
Chevrolet MyLink ⁴ Radio with Navigation and 8-inch diagonal color touch-screen display, includes Chevrolet MyLink Radio features plus enhanced navigation and SiriusXM NavTraffic ¹¹ with 12-month trial subscription and Performance Data Recorder	○	○	●	○	○	●	○	○	●
Bluetooth [®] wireless technology and audio streaming ⁷ for select phones	●	●	●	●	●	●	●	●	●
SiriusXM Satellite Radio ¹¹ featuring over 150 channels of satellite radio, including premium programming and access to over 150 channels of SiriusXM Internet radio on a computer, smartphone or tablet									
All Access Package with 3-month trial subscription	●	–	–	●	–	–	●	–	–
All Access Package with 12-month trial subscription	–	●	●	–	●	●	–	●	●
9-speaker Bose [®] sound system	●	–	–	●	–	–	●	–	–
10-speaker Bose Centerpoint [®] Surround Sound system	–	●	●	–	●	●	–	●	●
OnStar 4G LTE and built-in Wi-Fi [®] hotspot ¹² for up to seven devices, includes data trial for 3 months or 3 GB (whichever comes first)	●	●	●	●	●	●	●	●	●
OnStar Basic Plan ¹³ for five years includes select features of the myChevrolet Mobile App ¹⁴ including remote start (if equipped), door lock or unlock, and honk your horn and flash your lights. Limited OnStar services include Advanced Diagnostics and Dealer Maintenance Notification	●	●	●	●	●	●	●	●	●

¹ Includes sueded microfiber-wrapped flat-bottom steering wheel, shifter and boot. ² Requires Gray or Adrenaline Red interior. Not available with Competition Sport bucket seats. ³ Requires Jet Black leather seating surfaces and carbon-fiber instrument panel trim or Jet Black leather seating surfaces with sueded microfiber inserts. ⁴ Full functionality requires compatible Bluetooth and smartphone, and USB connectivity for some devices. Map coverage available in the United States, Puerto Rico and Canada. ⁵ Not compatible with all devices. ⁶ Requires compatible iPhone running iOS 6 or later. ⁷ Visit my.chevrolet.com/learn for vehicle and smartphone compatibility. ⁸ Vehicle user interface is a product of Google and its terms and privacy statements apply. Requires the Android Auto app on Google Play and an Android compatible smartphone running Android 5.0 Lollipop or higher and data plan rates apply. ⁹ Vehicle user interface is a product of Apple and its terms and privacy statements apply. Requires compatible iPhone and data plan rates apply. ¹⁰ Visit chevrolet.com for details about Shop. ¹¹ If you decide to continue service after your trial, the subscription plan you choose will automatically renew thereafter and you will be charged according to your chosen payment method at then-current rates. Fees and taxes apply. To cancel you must call SiriusXM at 1-866-635-2349. See SiriusXM Customer Agreement for complete terms at siriusxm.com. All fees and programming subject to change. For more information about Travel Link and NavTraffic, visit siriusxm.com/infotainment. ¹² Requires a compatible mobile device, active OnStar service and data plan. 4G LTE service available in select markets. Visit onstar.com for coverage map, details and system limitations. Data plans provided by AT&T. ¹³ Does not include emergency or security services. Visit onstar.com for coverage map, details and system limitations. ¹⁴ Requires active OnStar service, compatible device, factory-installed remote start and power locks. Data rates apply. Visit onstar.com for details and system limitations.

STANDARD AND AVAILABLE FEATURES (CONTINUED)

PACKAGES	STINGRAY			GRAND SPORT			Z06		
	1LT	2LT	3LT	1LT	2LT	3LT	1LZ	2LZ	3LZ
Z51 Performance Package Dry-sump oil system; performance gear ratios; eLSD; larger front brakes (13.6" vs. 12.6") with Black calipers; slotted brake rotors; Z51 performance suspension with specific shocks, springs and stabilizer bars; performance exhaust, differential and transmission cooling; heavy-duty engine cooling; and Aero Package that reduces lift for high-speed stability	○	○	○	–	–	–	–	–	–
Battery Protection Package	○	○	○	○	○	○	○	○	○
Chrome Badge Package	●	●	●	●	●	●	○	○	○
Carbon Flash Badge Package	○	○	○	○	○	○	●	●	●
Carbon Flash Painted Ground Effects Package Carbon Flash-painted splitter and rockers, and more aggressive rear spoiler	○	○	○	○	○	○	○	○	○
Visible Carbon Fiber Ground Effects Package Visible carbon-fiber splitter and rockers, and more aggressive rear spoiler	–	–	–	○	○	○	○	○	○
Z07 Performance Package Carbon ceramic high-performance brake system, Z07 suspension with Magnetic Selective Ride Control and Michelin® Pilot® Super Sport Cup 2 run-flat summer-only tires. ¹ Z06 includes Level 3 Aero Package, splitter end plates and clear adjustable wickerbill	–	–	–	○	○	○	○ ²	○ ²	○ ²

● STANDARD ○ AVAILABLE – NOT AVAILABLE

PACKAGES (CONTINUED)	STINGRAY			GRAND SPORT			Z06		
	1LT	2LT	3LT	1LT	2LT	3LT	1LZ	2LZ	3LZ
Grand Sport Heritage Package Fender hash marks, brushed-aluminum interior hash marks and floor mats with Grand Sport logo	–	–	–	○	○	○	–	–	–
Carbon 65 Edition Ceramic Matrix Gray Metallic exterior color, Carbon 65 fender and door graphics, exposed carbon-fiber-weave hood insert, Visible Carbon Fiber Ground Effects Package, Carbon Flash-painted outside mirrors, exposed carbon-fiber rear spoiler, carbon-fiber wheel center caps with crossed-flags logo, Carbon 65 Edition sill plates, Blue-painted brake calipers, and Blue custom leather stitching. Grand Sport includes Grand Sport machined-groove aluminum wheels in Black and Carbon Flash Badge Package. Z06 includes Z06 machined-groove blade aluminum wheels in Black. Coupe models include visible carbon-fiber roof panel with body-color surround and blackout roof decal. Convertible models include carbon-fiber tonneau cover inserts and Blue convertible top	–	–	–	–	–	○ ^{3,4}	–	–	○ ⁴

¹ Driving on wet roads, in heavy rain, or through standing water with competition-oriented tires may cause hydroplaning and loss of control. Use extreme caution and drive slowly on wet roads. Do not use summer-only tires in winter conditions, as it would adversely affect vehicle safety, performance and durability. Use only GM-approved tire and wheel combinations. Unapproved combinations may change the vehicle's performance characteristics. For important tire and wheel information, go to my.chevrolet.com/learnAbout/chevrolettires or see your dealer. ² Requires Carbon Flash Painted Ground Effects Package or Visible Carbon Fiber Ground Effects Package. ³ Not available with Grand Sport Heritage Package. ⁴ Requires Jet Black leather seating surfaces with sueded microfiber inserts. Not available with body-color or Shark Gray-painted exterior vents.

COLORS



BLACK



ADMIRAL BLUE



CERAMIC MATRIX GRAY METALLIC



TORCH RED



LONG BEACH RED METALLIC TINTCOAT¹



BLACK ROSE METALLIC¹



CORVETTE RACING YELLOW TINTCOAT¹



WATKINS GLEN GRAY METALLIC



BLADE SILVER METALLIC



ARCTIC WHITE

CONVERTIBLE TOP COLORS



Black

Kalahari

Gray



Blue

Spice Red

RECOMMENDED COLOR COMBINATIONS

EXTERIOR COLORS	INTERIOR COLORS (1LT, 2LT, 3LT, 1LZ, 2LZ, 3LZ)				
	CONVERTIBLE TOP COLORS	● BLACK	● KALAHARI	● GRAY	● BLUE ● SPICE RED
JET BLACK 1LT, 2LT, 3LT, 1LZ, 2LZ, 3LZ	GRAY 1LT, 2LT, 3LT, 1LZ, 2LZ, 3LZ	KALAHARI 2LT, 3LT, 2LZ, 3LZ	ADRENALINE RED 1LT, 2LT, 3LT, 1LZ, 2LZ, 3LZ	SPICE RED 3LT, 3LZ	
Black	● ● ● ● ●	● ● ● ● ●	● ● ● ● ●	● ● ● ● ●	● ● ● ● ●
Admiral Blue	● ● ● ● ●	● ● ● ● ●	● ● ● ● ●	● ● ● ● ●	—
Ceramic Matrix Gray Metallic	● ● ● ● ●	● ● ● ● ●	● ● ● ● ●	● ● ● ● ●	● ● ● ● ●
Torch Red	● ● ● ● ●	● ● ● ● ●	● ● ● ● ●	● ● ● ● ●	—
Long Beach Red Metallic Tintcoat ¹	● ● ● ● ●	● ● ● ● ●	● ● ● ● ●	—	● ● ● ● ●
Black Rose Metallic ¹	● ● ● ● ●	● ● ● ● ●	● ● ● ● ●	—	—
Corvette Racing Yellow Tintcoat ¹	● ● ● ● ●	● ● ● ● ●	● ● ● ● ●	—	—
Watkins Glen Gray Metallic	● ● ● ● ●	● ● ● ● ●	● ● ● ● ●	● ● ● ● ●	● ● ● ● ●
Blade Silver Metallic	● ● ● ● ●	● ● ● ● ●	● ● ● ● ●	● ● ● ● ●	● ● ● ● ●
Arctic White	● ● ● ● ●	● ● ● ● ●	● ● ● ● ●	● ● ● ● ●	● ● ● ● ●

¹ Extra-cost color.

GRAPHICS

GRAND SPORT HERITAGE PACKAGE HASH MARKS AND CENTER STRIPE EXAMPLES



Carbon Flash Center Stripe^{1,2} with Hyper Green Fender Hash Marks



Red Center Stripe^{1,2,3} with Gray Fender Hash Marks⁴



Satin Black Center Stripe^{1,2} with Torch Red Fender Hash Marks³

HOOD STINGER STRIPE



Jake Carbon Flash Metallic Two-Tone^{2,8}

FULL-LENGTH RACING STRIPE PACKAGE



Blue Center Stripe^{1,2,5} with Torch Red Fender Hash Marks³



Carbon Flash Center Stripe^{1,2} with Gray Fender Hash Marks⁴



White Center Stripe^{1,2,6} with Carbon Flash Metallic Fender Hash Marks



Red, White and Blue^{2,9}

FULL-LENGTH DUAL RACING STRIPE PACKAGE



Carbon Flash Center Stripe^{1,2} with Torch Red Fender Hash Marks³



Gray Center Stripe^{1,2,4} with Volcano Orange Fender Hash Marks



Carbon Flash Center Stripe^{1,2} with Yellow Fender Hash Marks⁷



Carbon Flash Metallic^{2,10}

¹ Not available with painted exterior vents. ² Not available with any other stripe package. ³ Not available with Long Beach Red Metallic Tintcoat or Torch Red exterior colors. ⁴ Not available with Watkins Glen Gray Metallic exterior color. ⁵ Not available with Admiral Blue exterior color. ⁶ Not available with Arctic White exterior color. ⁷ Not available with Corvette Racing Yellow Tintcoat exterior color. ⁸ Available on all models. Single-Tone Hood Stinger Stripe available in Carbon Flash, Shark Gray and Satin Black. See dealer for full details. ⁹ Available on all models. Additional color availability includes Velocity Yellow and Satin Black. See dealer for full details. ¹⁰ Available on all models. Additional color availability includes Blade Silver, Crystal Red, Cyber Gray and Inferno Orange. See dealer for full details.

INTERIOR CONFIGURATIONS (SELECT EXAMPLES SHOWN)



Jet Black Leather Seating Surfaces (1LT)



Gray Leather Seating Surfaces (1LT)



Adrenaline Red Leather Seating Surfaces (1LT)



Jet Black Leather Seating Surfaces/Sueded Microfiber Inserts¹ with Available Competition Sport Seats (1LT)



Jet Black Leather Seating Surfaces with Available Competition Sport Seats (2LT)



Gray Leather Seating Surfaces (2LT)



Adrenaline Red Leather Seating Surfaces with Available Competition Sport Seats (2LT)



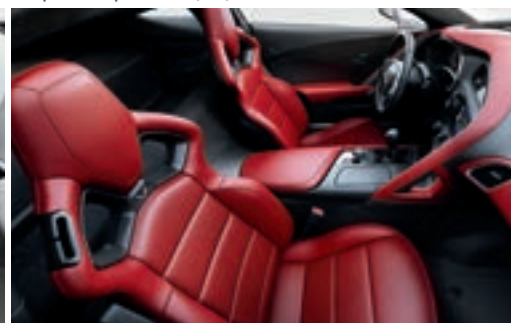
Kalahari Leather Seating Surfaces with Available Competition Sport Seats (2LT)



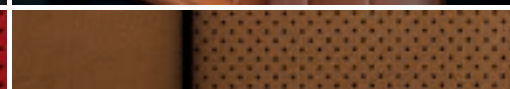
Jet Black Leather Seating Surfaces (3LT)



Gray Leather Seating Surfaces with Available Competition Sport Seats (3LT)



Adrenaline Red Leather Seating Surfaces with Available Competition Sport Seats (3LT)



Kalahari Leather Seating Surfaces (3LZ)

¹ Includes sueded microfiber-wrapped steering wheel and shifter.

INTERIOR CONFIGURATIONS (SELECT EXAMPLES SHOWN) (CONTINUED)



Gray Leather Seating Surfaces/Sueded Microfiber Inserts with Available Competition Sport Seats (2LT)



Gray Leather Seating Surfaces with Sueded Microfiber Inserts (3LT)



Kalahari Leather Seating Surfaces with Sueded Microfiber Inserts (2LZ)



Kalahari Leather Seating Surfaces/Sueded Microfiber Inserts' with Available Competition Sport Seats (3LT)



Gray Two-Tone Leather Seating Surfaces (2LT)



Gray Two-Tone Leather Seating Surfaces with Sueded Microfiber Inserts' (3LZ)



Adrenaline Red Two-Tone Leather Seating Surfaces (2LZ)



Adrenaline Red Two-Tone Leather Seating Surfaces with Sueded Microfiber Inserts' (3LT)



Spice Red Leather Seating Surfaces with Available Competition Sport Seats (3LZ)



Jet Black Leather Seating Surfaces with Available Yellow Custom Stitching (3LT)



Jet Black Leather Seating Surfaces with Available Red Custom Stitching and Competition Sport Seats (3LZ)



Jet Black Leather Seating Surfaces/Sueded Microfiber Inserts' with Available Blue Custom Stitching (3LZ)



¹ Includes sueded microfiber-wrapped steering wheel and shifter.

STINGRAY WHEELS PAIRED WITH SUMMER-ONLY TIRES¹



19" x 8.5" Front and
20" x 10" Rear Z51-Style
5-Split-Spoke Aluminum
Wheel in Silver



19" x 8.5" Front and
20" x 10" Rear Z51-Style
5-Split-Spoke Aluminum
Wheel in Black



19" x 8.5" Front and
20" x 10" Rear Z51-Style
5-Split-Spoke Machined-
Aluminum Wheel in Black



19" x 8.5" Front and
20" x 10" Rear Motorsports
Polished-Aluminum Wheel



19" x 8.5" Front and
20" x 10" Rear Aluminum
Torque Directional
Wheel in Silver



19" x 8.5" Front and
20" x 10" Rear Z51-Style
5-Split-Spoke Aluminum
Wheel in Chrome



19" x 8.5" Front and
20" x 10" Rear Z51-Style
5-Split-Spoke Aluminum Wheel
in Satin Black with Red Stripe



19" x 8.5" Front and
20" x 10" Rear Z51-Style
5-Split-Spoke Aluminum Wheel
in Satin Black with Yellow Stripe



19" x 8.5" Front and
20" x 10" Rear Motorsports
Aluminum Wheel in Black



19" x 8.5" Front and
20" x 10" Rear Aluminum
Torque Directional
Wheel in Chrome

GRAND SPORT WHEELS PAIRED WITH SUMMER-ONLY TIRES¹



19" x 10" Front and 20" x 12"
Rear Grand Sport Aluminum
Wheel in Pearl Nickel



19" x 10" Front and
20" x 12" Rear Grand Sport
Aluminum Wheel in Black



19" x 10" Front and
20" x 12" Rear Grand Sport
Machined-Face Aluminum
Wheel



19" x 10" Front and
20" x 12" Rear Grand Sport
Aluminum Wheel in Chrome



19" x 10" Front and
20" x 12" Rear Grand Sport
Aluminum Wheel in Satin Black
with Red Stripe



19" x 10" Front and
20" x 12" Rear Grand Sport
Machined-Groove Aluminum
Wheel in Black²

Z06 WHEELS PAIRED WITH SUMMER-ONLY TIRES¹



19" x 10" Front and
20" x 12" Rear Z06 Aluminum
Wheel in Pearl Nickel



19" x 10" Front and
20" x 12" Rear Z06 Aluminum
Wheel in Black



19" x 10" Front and
20" x 12" Rear Z06 Machined-
Groove Aluminum
Wheel in Spectra Gray



19" x 10" Front and
20" x 12" Rear Z06 Aluminum
Wheel in Chrome



19" x 10" Front and
20" x 12" Rear Z06 Aluminum
Wheel in Satin Black
with Red Stripe



19" x 10" Front and
20" x 12" Rear Z06 Aluminum
Wheel in Black with
Yellow Stripe



19" x 10" Front and
20" x 12" Rear Z06 10-Spoke
Blade Aluminum Wheel
in Pearl Nickel



19" x 10" Front and
20" x 12" Rear Z06 10-Spoke
Blade Machined-Groove
Aluminum Wheel in Black²

¹ Do not use summer-only tires in winter conditions, as it would adversely affect vehicle safety, performance and durability. Use only GM-approved tire and wheel combinations. Unapproved combinations may change the vehicle's performance characteristics. For important tire and wheel information, go to my.chevrolet.com/learnAbout/chevrolettires or see your dealer. ² Requires available Carbon 65 Edition.



CALIPER COLORS



Dark Gray Metallic calipers standard on Stingray¹ and available on Grand Sport² and Z06²



Black calipers standard on Grand Sport and available on Stingray and Z06³ (Brembo[®] slotted brakes included with available Z51 Performance Package shown)



Red calipers standard on Z06 and available on Stingray and Grand Sport (Brembo slotted brakes included with available Z51 Performance Package shown)



Yellow calipers available on Stingray, Grand Sport and Z06 (Brembo slotted brakes included with available Z51 Performance Package shown)



Blue calipers available on Grand Sport⁴ and Z06⁴

19" front Z06 Carbon 65 Edition machined-groove aluminum wheel in Black.

¹ Not available with Z51 Performance Package. ² Requires available Z07 Performance Package or available carbon ceramic high-performance brake system. ³ Not available with Z07 Performance Package or carbon ceramic high-performance brake system. ⁴ Requires available Carbon 65 Edition.



CHEVROLET

COMPLETE CARE

Experience Chevrolet Complete Care, a comprehensive coverage, warranty and protection program that comes standard with every new 2018 Chevrolet Corvette lease and purchase. Simply, it is designed around you, to make it easy to keep your Chevrolet like new – and give you the confidence you deserve when you need it most.

YOUR COMPREHENSIVE OWNER BENEFIT PROGRAM.

Includes up to three maintenance visits (oil and filter changes and multipoint vehicle inspections):^{1,2}

5 years/60,000 miles of Roadside Assistance and Courtesy Transportation³

5-year/60,000-mile Powertrain Limited Warranty³

3-year/36,000-mile Bumper-to-Bumper Limited Warranty³

6 years/100,000 miles of Rust-Through Protection³

5 years of OnStar Basic Plan⁴ including select features of the myChevrolet Mobile App⁵

Limited service trial of OnStar Guidance Plan⁶

MAXIMUM CAPACITIES

	STINGRAY	GRAND SPORT	Z06
EPA-ESTIMATED FUEL ECONOMY (MPG CITY/HIGHWAY)	16/25 manual 15/25 automatic	16/25 manual 15/25 automatic	15/22 manual 13/23 automatic
FUEL TANK (APPROXIMATE)	18.5 gal./70 L	18.5 gal./70 L	18.5 gal./70 L
LUGGAGE CAPACITY	15 cu. ft./425 L (coupe) 10 cu. ft./283 L (convertible)	15 cu. ft./425 L (coupe) 10 cu. ft./283 L (convertible)	15 cu. ft./425 L (coupe) 10 cu. ft./283 L (convertible)

OWNERSHIP EXTRAS



CHEVROLET.COM/WARRANTY



CHEVROLET.COM/ACCESSORIES



ONSTAR.COM



SIRIUSXM.COM

NEW VEHICLE LIMITED WARRANTY

5-YEAR/60,000-MILE TRANSFERABLE POWERTRAIN LIMITED WARRANTY Every 2018 Chevrolet Corvette comes with a 5-year/60,000-mile (whichever comes first) transferable Powertrain Limited Warranty. 24/7 Roadside Assistance and Courtesy Transportation are also offered for the duration of the Powertrain Limited Warranty. Please see your Chevrolet dealer for details.

3-YEAR/36,000-MILE BUMPER-TO-BUMPER LIMITED WARRANTY Chevrolet will warrant each 2018 Corvette from bumper to bumper for 3 years/36,000 miles (whichever comes first; see dealer for details), with no deductible, from the original in-service date of the vehicle, for warrantable repairs that are required as a result of defects due to materials and/or workmanship. Cosmetic corrosion resulting from defects is also covered under the Bumper-to-Bumper Limited Warranty. In addition, rust-through corrosion will be covered for 6 years/100,000 miles (whichever comes first). See dealer for details.

¹ Stingray without Z51 Performance Package includes two maintenance visits. ² Maintenance visits must occur within two years or 24,000 miles of vehicle delivery, whichever comes first. Does not include air filters. See participating dealer for other restrictions and complete details. ³ Whichever comes first. See dealer for details. ⁴ Does not include emergency or security services. Visit onstar.com for coverage map, details and system limitations. ⁵ Requires active OnStar service, compatible device, factory-installed remote start and power locks. Data rates apply. Visit onstar.com for details and system limitations. ⁶ Visit onstar.com for coverage map, details and system limitations.

IMPORTANT INFORMATION

CHEVROLET OWNER CENTER (MY.CHEVROLET.COM) Everything you need to know. Anything you need to do. Your Chevrolet Owner Center makes it easy. Create your account today to get the most out of your new vehicle. Get special alerts and offers, schedule service, review your maintenance schedule, and view how-to videos specifically for your vehicle. All online, anytime. Visit the Owner Center today to register or take a tour.

ENGINES Chevrolet products are equipped with engines produced by GM Global Propulsion Systems or other suppliers to GM worldwide. The engines in Chevrolet products may also be used in other GM makes and models.

ASSEMBLY Chevrolet vehicles and their components are assembled or produced by different operating units of General Motors, its subsidiaries or suppliers to GM worldwide. We sometimes find it necessary to produce Chevrolet vehicles with different or differently sourced components than originally scheduled. Since some options may be unavailable when your vehicle is assembled, we suggest you verify that your vehicle includes the equipment you ordered and that, if there were changes, they are acceptable to you.

ONSTAR OnStar services require vehicle electrical system (including battery), wireless service and GPS satellite signals to be available and operating for features to function properly. OnStar acts as a link to existing emergency service providers. Subscription Service Agreement required. Call 1.888.4ONSTAR (1-888-466-7827) or visit onstar.com for OnStar Terms and Conditions, Privacy Policy, details and system limitations.

A NOTE ON CHILD SAFETY Always use safety belts and the correct child restraint for your child's age and size, even with air bags. Even in vehicles equipped with the Passenger Sensing System, children are safer when properly secured in a rear seat in the appropriate infant, child or booster seat. Never place a rear-facing infant restraint in the front seat of any vehicle equipped with an active frontal air bag. See the Owner's Manual and the child safety seat instructions for more safety information.

IMPORTANT WORDS ABOUT THIS CATALOG We have tried to make this catalog comprehensive and factual. We reserve the right, however, to make changes at any time, without notice, in prices, colors, materials, equipment, specifications, models and availability. Specifications, dimensions, measurements, ratings and other numbers in this catalog and other printed materials provided at the dealership or affixed to vehicles are approximations based on design and engineering drawings, prototypes and laboratory tests. Your vehicle may differ due to variations in manufacture and equipment. Since some information may have been updated since the time of printing, please check with your Chevrolet dealer for complete details. Chevrolet reserves the right to lengthen or shorten the model

year for any product for any reason or to start and end model years at different times. Certain vehicle features may lose their usefulness over time due to obsolescence from technological changes. Unless otherwise noted, all claims based on GM Luxury Sports Car segment and latest available competitive information. Excludes other GM vehicles.

TIRES Corvette is equipped with run-flat Michelin® Pilot® Super Sport ZP summer-only tires¹ that eliminate the need for a spare. The tire design enables safe function during and after loss of pressure for some distance at a moderate speed. The shorter the distance that you drive with loss of pressure, the better the chance that the tire can be repaired. As soon as possible, contact Roadside Assistance for the nearest authorized GM or run-flat tire servicing facility and have the tire inspected. See your Owner's Manual. Corvette tires tend to wear faster and are more susceptible to damage from road hazards or curb impact than standard profile tires. This type of damage is not covered by the GM New Vehicle Limited Warranty.

FLEET ORDERS Some standard content may be deleted on fleet orders. See dealer for details.

CHEVROLET OWNERSHIP EXPERIENCE Chevrolet is committed to enhancing the vehicle shopping and ownership experience through a wide array of programs. Visit chevrolet.com to build and price, find a vehicle, request a quote, compare vehicles, find financial tools or track your vehicle order. You'll also find information about 24-hour Roadside Assistance, Courtesy Transportation, Customer Assistance, GM Mobility, safety and current incentives.

CHEVROLET.COM/SAFETY Chevrolet is committed to keeping you and your family safe – from the start of your journey to your destination. That's why every Chevrolet is designed with a comprehensive list of safety and security features to help give you peace of mind.

GMMOBILITY.COM (1-800-323-9935) GM MobilitySM offers financial assistance for eligible adaptive equipment to make automotive travel easier for persons with disabilities or special transportation needs. To learn more about special GM Mobility offers, visit gmmobility.com.

THE BUYPOWER CARD The Chevrolet BuyPower Card – Every purchase you make with the BuyPower Card from Capital One* helps you earn toward an eligible new Chevrolet, Buick, GMC or Cadillac vehicle. There's no limit on the amount you can earn or redeem, and your Earnings don't expire. Visit chevroletbuypowercard.com/catalogs.

* Capital One, N.A. is the issuer of the BuyPower Card. General Motors ("GM") is responsible for the operation and administration of the Earnings program.



TWITTER.COM/CHEVROLET



YOUTUBE.COM/CHEVROLET



FACEBOOK.COM/CHEVROLET

GM, the GM logo, Chevrolet, the Chevrolet logo, and the slogans, emblems, vehicle model names, vehicle body designs and other marks appearing in this catalog are the trademarks and/or service marks of General Motors, its subsidiaries, affiliates or licensors. ©2017 OnStar. All rights reserved. Sirius, XM, SiriusXM and all related marks and logos are trademarks of Sirius XM Radio Inc. Bose and Centerpoint are registered trademarks of the Bose Corp. The Bluetooth word mark is a registered trademark owned by Bluetooth SIG, Inc., and any use of such mark by Chevrolet is under license. Brembo is a registered trademark of Brembo S.p.A. Michelin and Pilot are registered trademarks of Michelin North America, Inc.

©2017 General Motors. All rights reserved. June 2017

¹ Do not use summer-only tires in winter conditions, as it would adversely affect vehicle safety, performance and durability. Use only GM-approved tire and wheel combinations. Unapproved combinations may change the vehicle's performance characteristics. For important tire and wheel information, go to my.chevrolet.com/learnAbout/chevrolettires or see your dealer.



FIND **NEW** ROADS™