

#PI1535: Track Use Power Steering Gear Cooling Duct - (Sep 16, 2015)

Subject: Track Use Power Steering Gear Cooling Duct

Models: 2014-2016 Chevrolet Corvette



Condition/Concern

Some customers may comment on feeling a reduction in steering assist while driving their vehicle on the track during hot days.

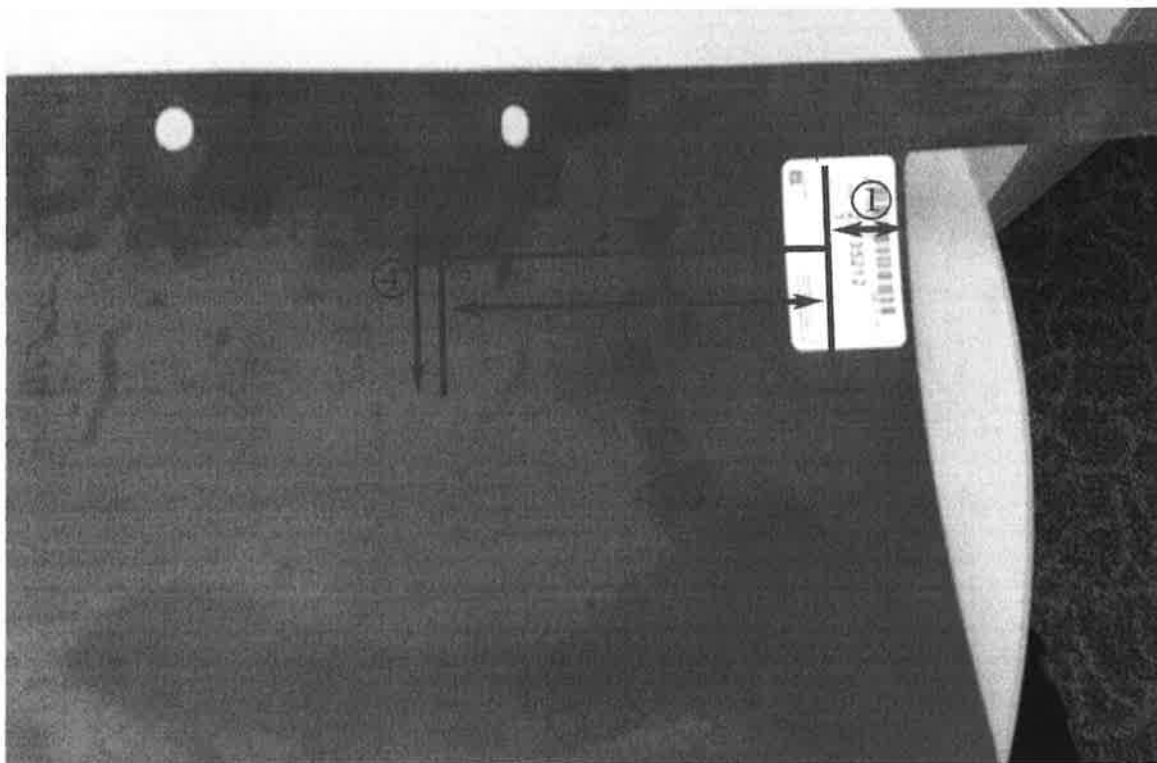
This condition may be caused when there is an increase in temperature with the steering gear.

Recommendation/Instructions

Install a new power steering gear cooling duct following the procedure below.

Important: This duct is **ONLY** intended for track use and should be removed after **ALL** track events.

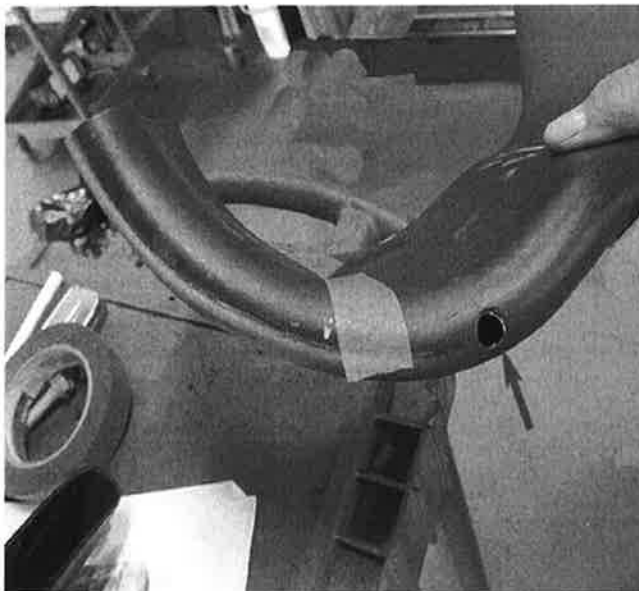
1. Raise and support the vehicle. Refer to Lifting and jacking the Vehicle in SI.
2. Remove the front compartment air deflector. Refer to Front Compartment Air Deflector in SI.



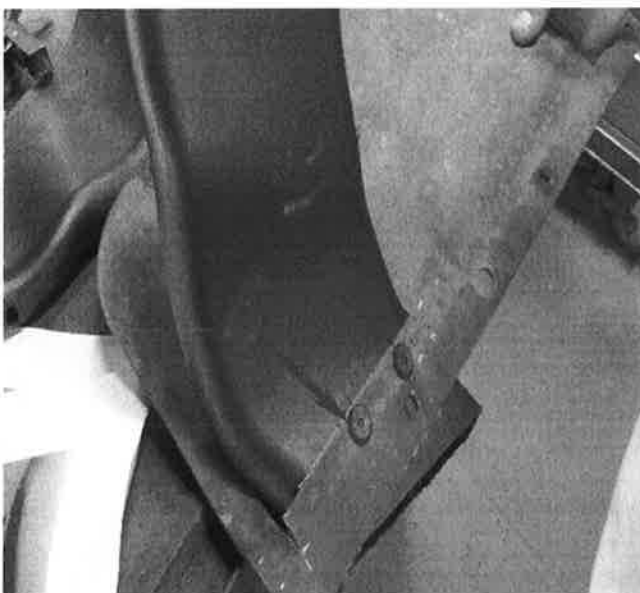
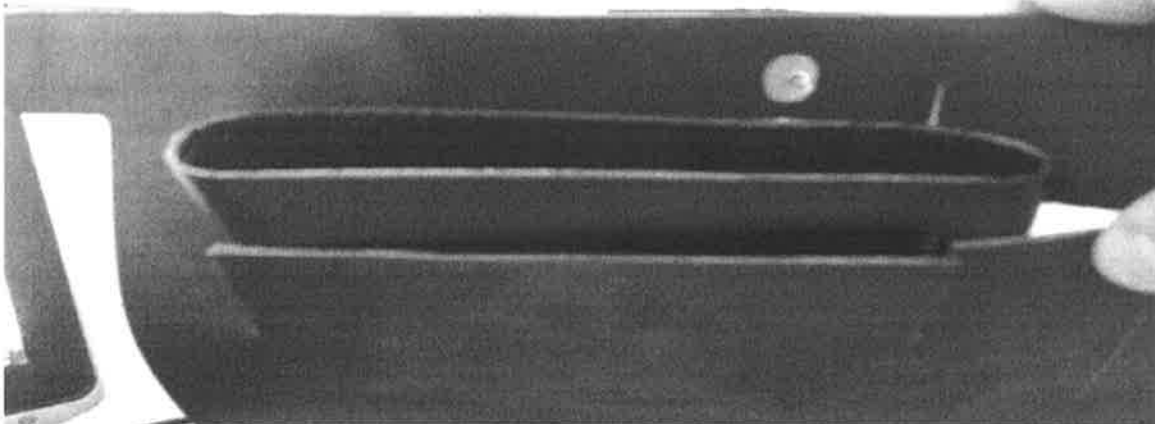
3. Place the new front compartment air deflector on a surface that can be used to cut on, mark the dimensions of 25.4 mm (1 in) (1), 19.05 mm (.75 in), 152.4 mm (6 in) (3), 50.8 mm (2 in) (4) as shown in the illustration above and cut using a box cutter.



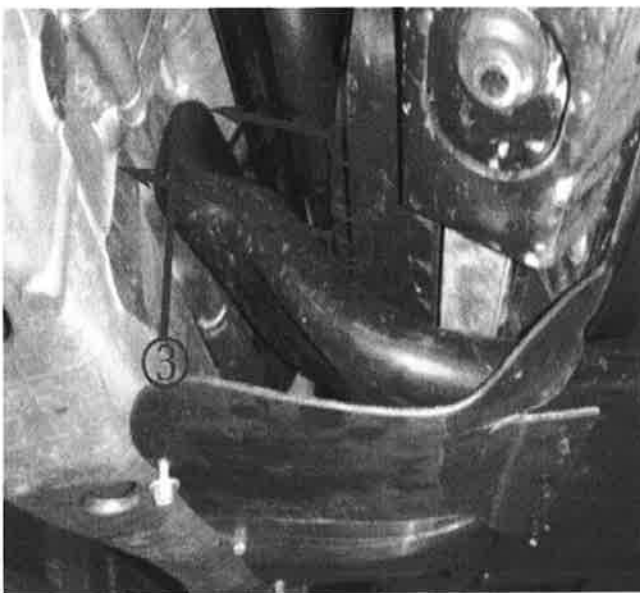
4. Using a hack saw, cut the support arm off (1) and the duct after measuring 50.8 mm (2 in) (2) after the second bend.



5. Measure 50.8 mm (2 in) up from the hole. Mark and cut using a hack saw.



6. Place the cut duct into the slot. Make sure it comes out of the slot 25.4 mm (1 in). Using a 1/4" drill bit, drill 2 holes through the deflector and duct and rivet together.



7. Once the part is riveted into place, dry fit to the car to make sure enough of the duct is cut to allow it to sit between the steering motor (1) and the lower rack (2).

Note: This might require multiple cuts to the duct (3) and test fittings.

Parts Information

*Contact Kent Automotive at 1-888-YES-KENT or online at www.kent-automotive.com.

Part Number	Description	Qty
15842373	DUCT-RR BRK CLPR CLG	1
23135212	DEFLECTOR-F/CMPT AIR	1
P26118*	Plastic Rivet - 17/64" Hole Diameter; 3/32" - 3/16" Grip Range; 11/16" Flange Diameter; Black Nylon	2

Warranty Information

Labor and parts associated with these procedures should NOT be charged under warranty. Rather, this should be customer pay.

GM bulletins are intended for use by professional technicians, NOT a "do-it-yourselfer". They are written to inform these technicians of conditions that may occur on some vehicles, or to provide information that could assist in the proper service of a vehicle. Properly trained technicians have the equipment, tools, safety instructions, and know-how to do a job properly and safely. If a condition is described, DO NOT assume that the bulletin applies to your vehicle, or that your vehicle will have that condition. See your GM dealer for information on whether your vehicle may benefit from the information.



WE SUPPORT
VOLUNTARY
TECHNICIAN
CERTIFICATION